

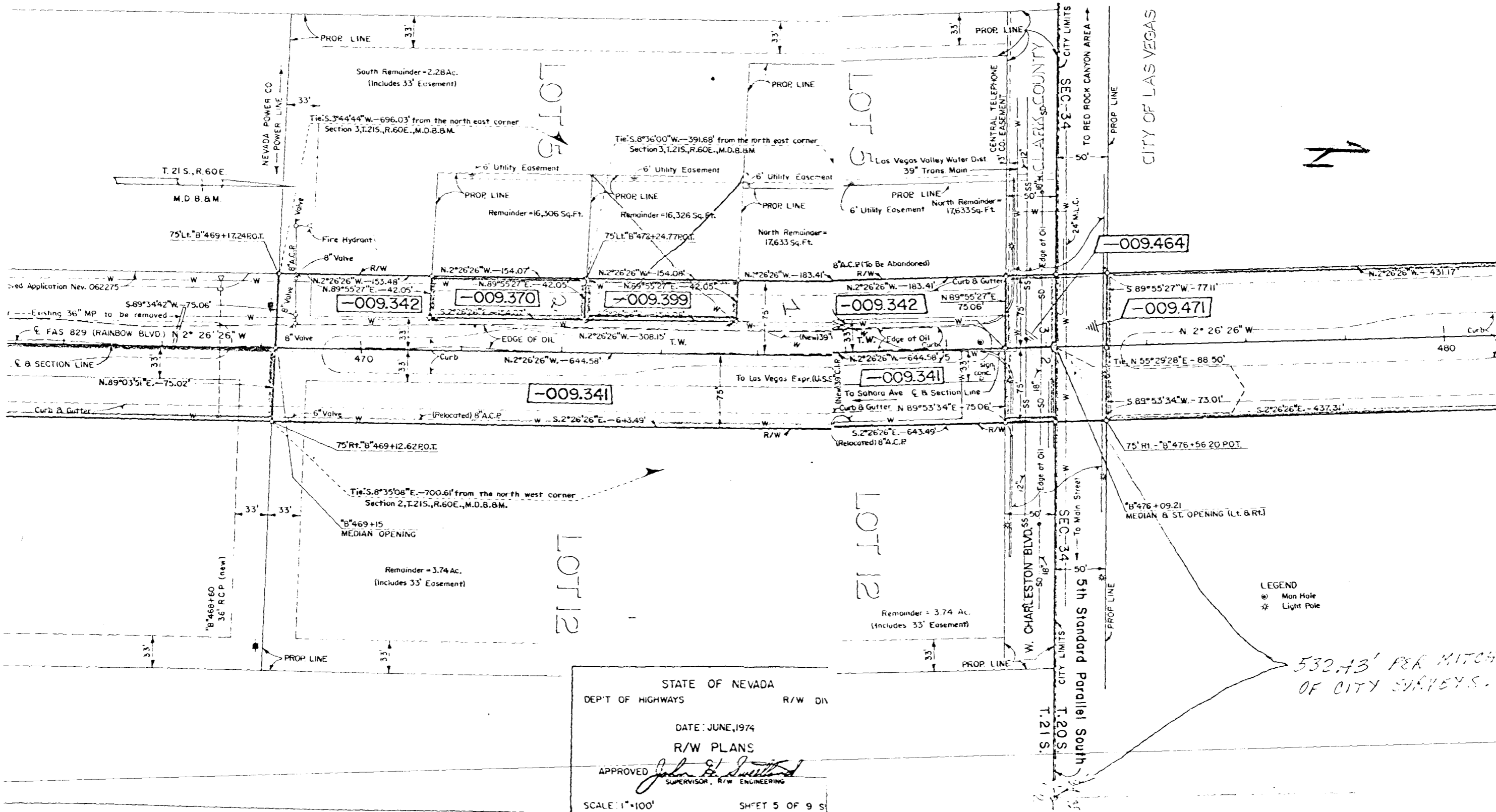
REMARKS
APPROVED MAY 8, 1964

FED RD REG NO	STATE	PROJECT NO	MILEPOST
9	NEVADA	RS-US-829(1)	FA 829-CL-8.44 to 10.49

829-CL-
E OF NEVADA DEPT OF HIGHWAYS

PROPERTY SCHEDULE

ACCEL	GRANTOR	GROSS AREA	PREV ACQU	NET AREA	R/W AREA	RECORD	
						BK	DOC.
0							
09.341	WELDON J. BIRDWELL	1.11 Ac.		1.11 Ac.	1.11 Ac.	636	59516
09.342	E. R. SPIESS ET UX	0.81 Ac.		0.81 Ac.	0.81 Ac.	634	5936
09.472	LIED DISTRIBUTING CO.	9.03 Ac.		9.03 Ac.	9.03 Ac.	649	6084
09.464	CLARK COUNTY	7,507 Sq. Ft.		7,507 Sq. Ft.	7,507 Sq. Ft.	655	6141
09.471	CITY OF LAS VEGAS	7,506 Sq. Ft.		7,506 Sq. Ft.	7,506 Sq. Ft.	667	626E



CHARLESTON

BLVD.

W CHARLESTON BLVD.

MENTA

12" ↗

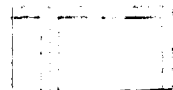



15" ↘

A-4-71

BLVD.



LOCATION MAP

-  ANNEXATION AREA
-  SURFACED STREETS
-  CITY SEWER
-  CITY LIMITS

LONANZA
HIGH
SC #30L

RANDON

DAWLEY

N

WILFREY PINES DRIVE

LOCATION MAP

CHARLESTON

BLVD.

W. CHARLESTON BLVD.

EXISTING LAND USE

VACANT

RAINBOW

BLVD.

BONANZA HIGH SCHOOL

CLY

TENAYA WAY

SUNRAY ST.

RAINBOW BLVD.

REDWOOD ST.

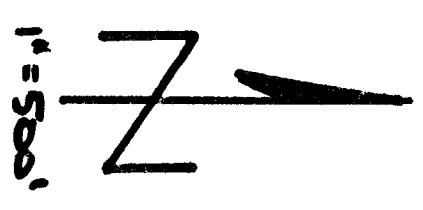
TORREY PINES DRIVE

W. SARANA AVE.

O'BANNON

W. OAKLEY

DEWEY AVE.



CITY OF LAS VEG

MENTAL HEALTH CENT

DESE

7025

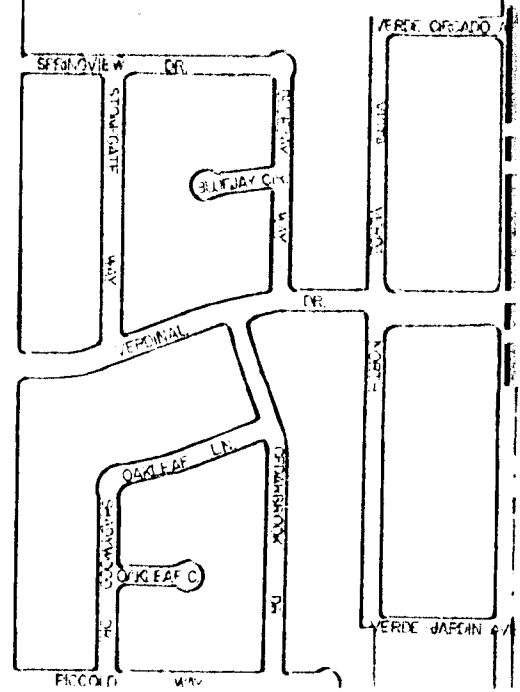
A-4-TH

6821

6825

6785

6761



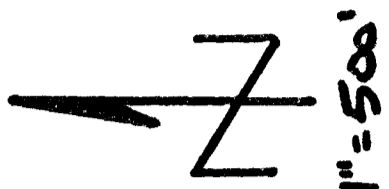
EXISTING LAND USE MAP

CHARLESTON

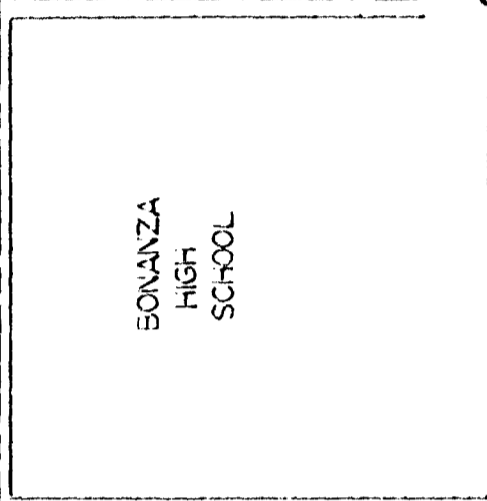
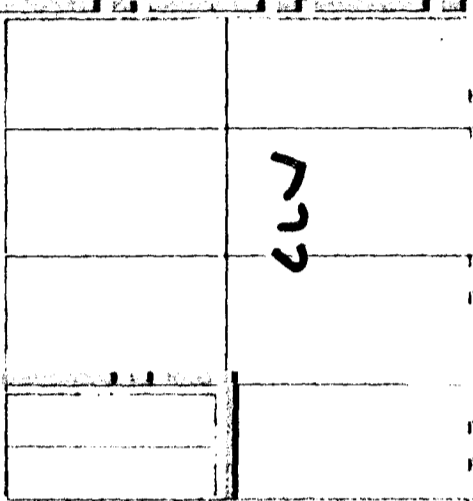
BLVD.

MENTAL HEALTH CENT
DES

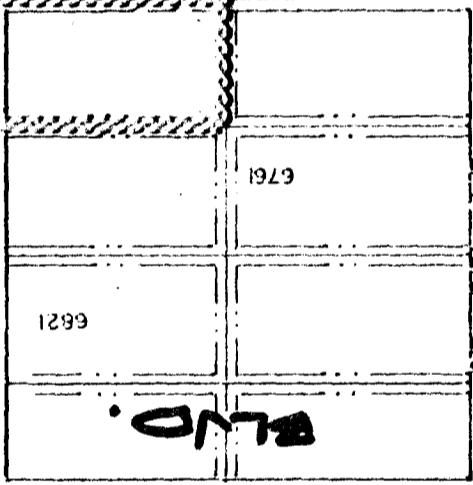
CITY OF LAS VEG



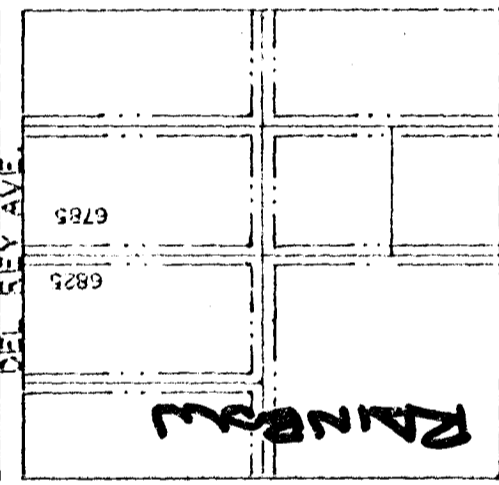
W. CHARLESTON BLVD.



BONANZA HIGH SCHOOL

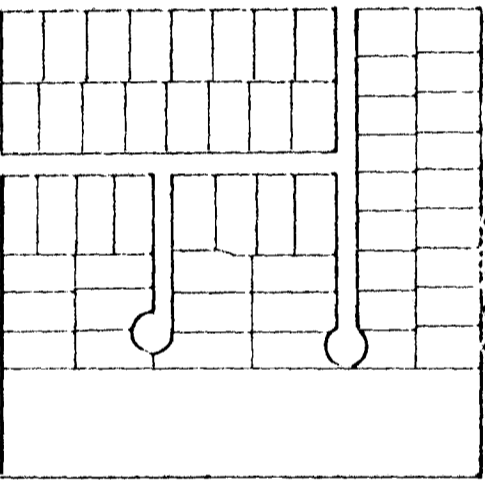


BLVD.

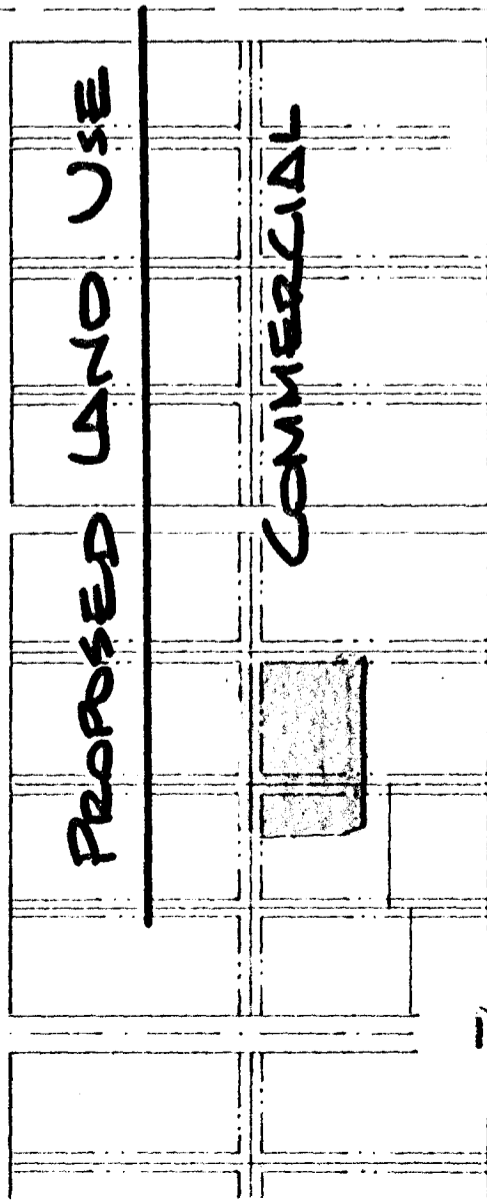
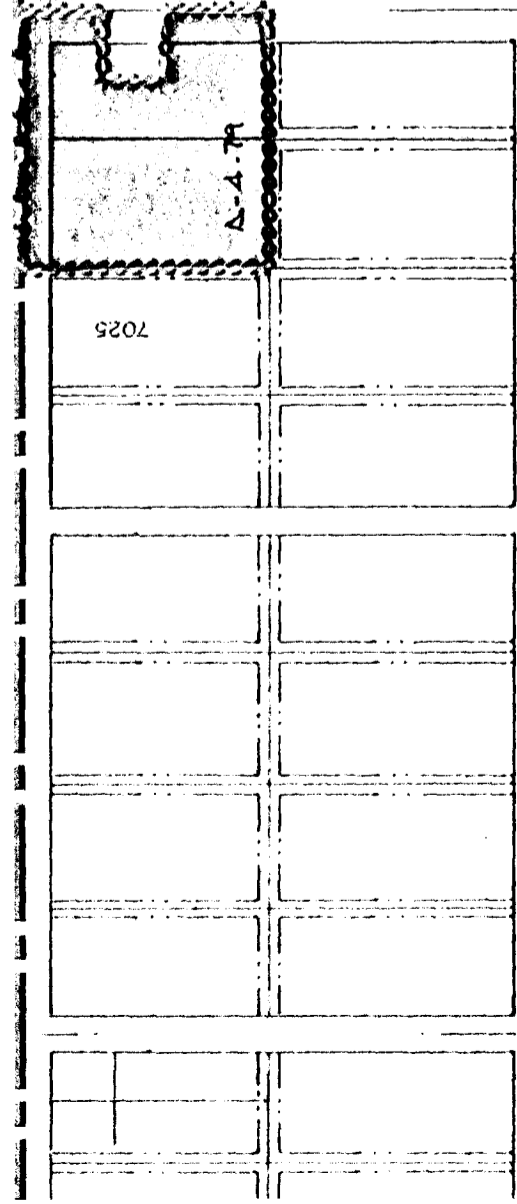


DEL REY AVE.

W. OAKLEY

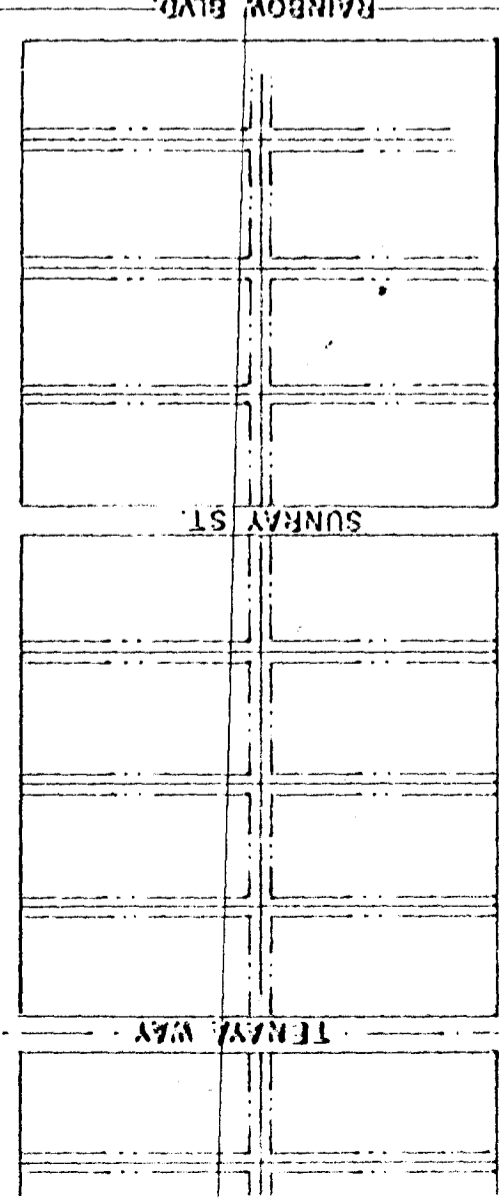
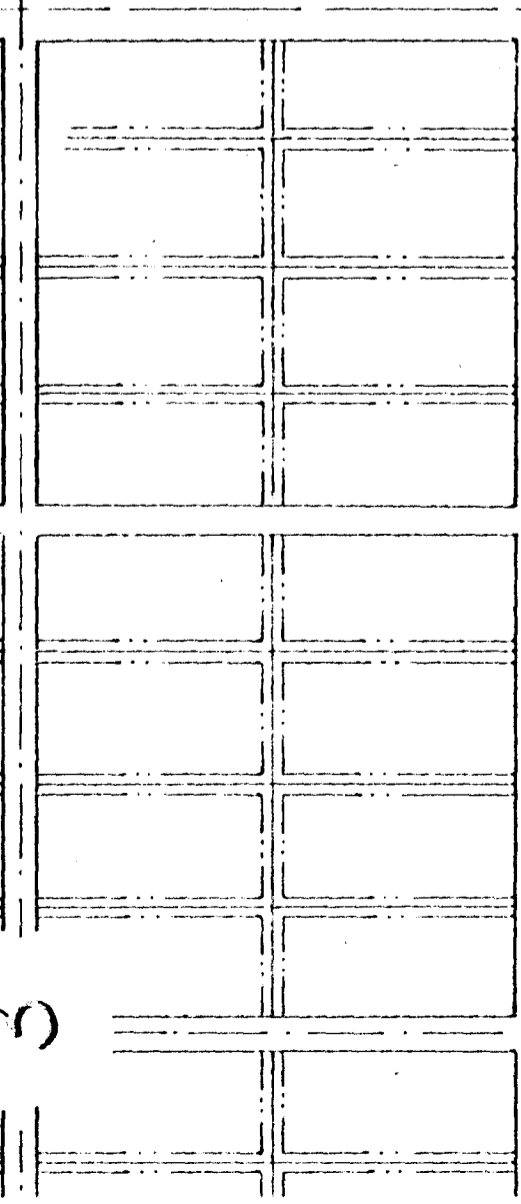


O'BANNON



PROPOSED LAND USE

COMMERCIAL

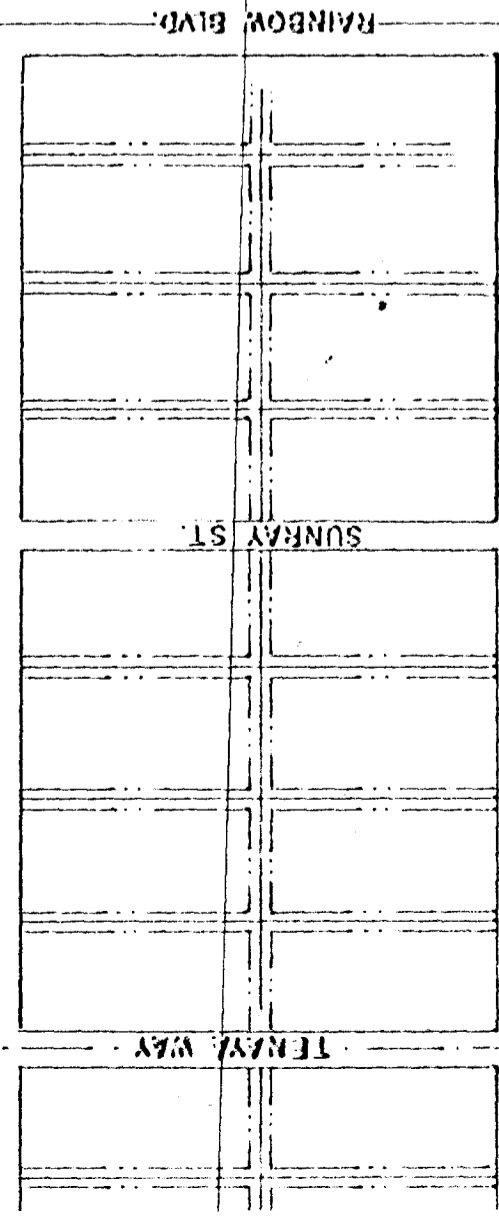
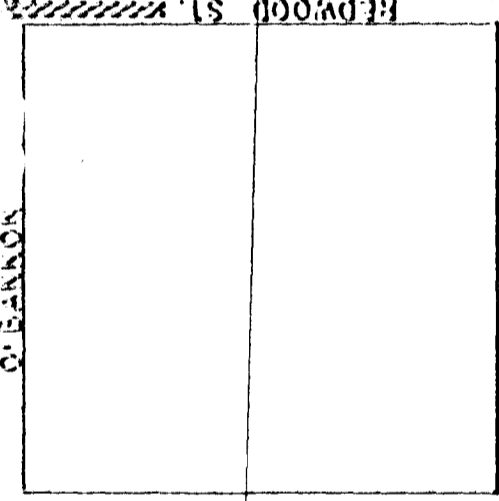
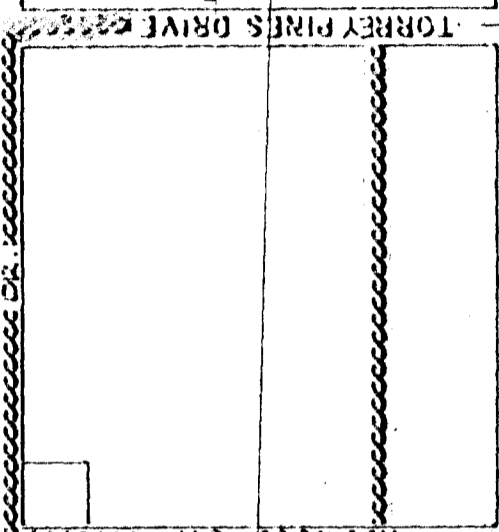
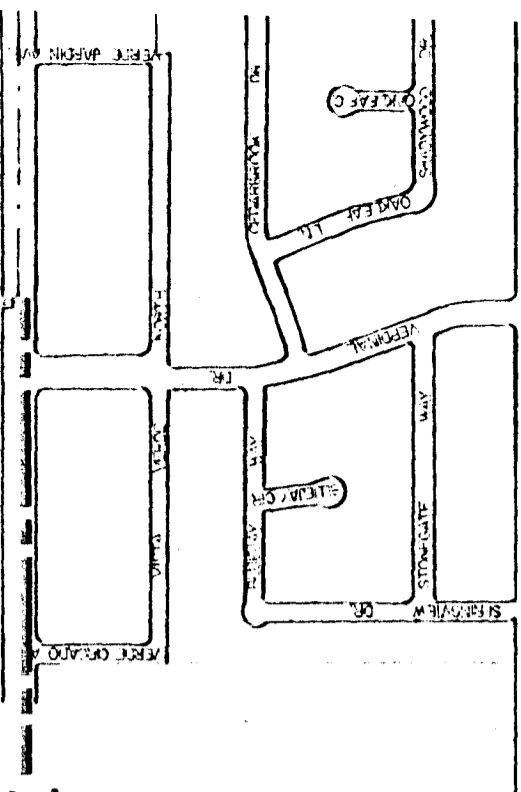


RAINBOW BLVD.

SUNRAY ST.

TENNY WAY

2



PROPOSED LAND USE MAP

W. SARARA AVE.

01