

SCALE 1"=500'

• BORING LOCATION

U.S. HWY 95

341±

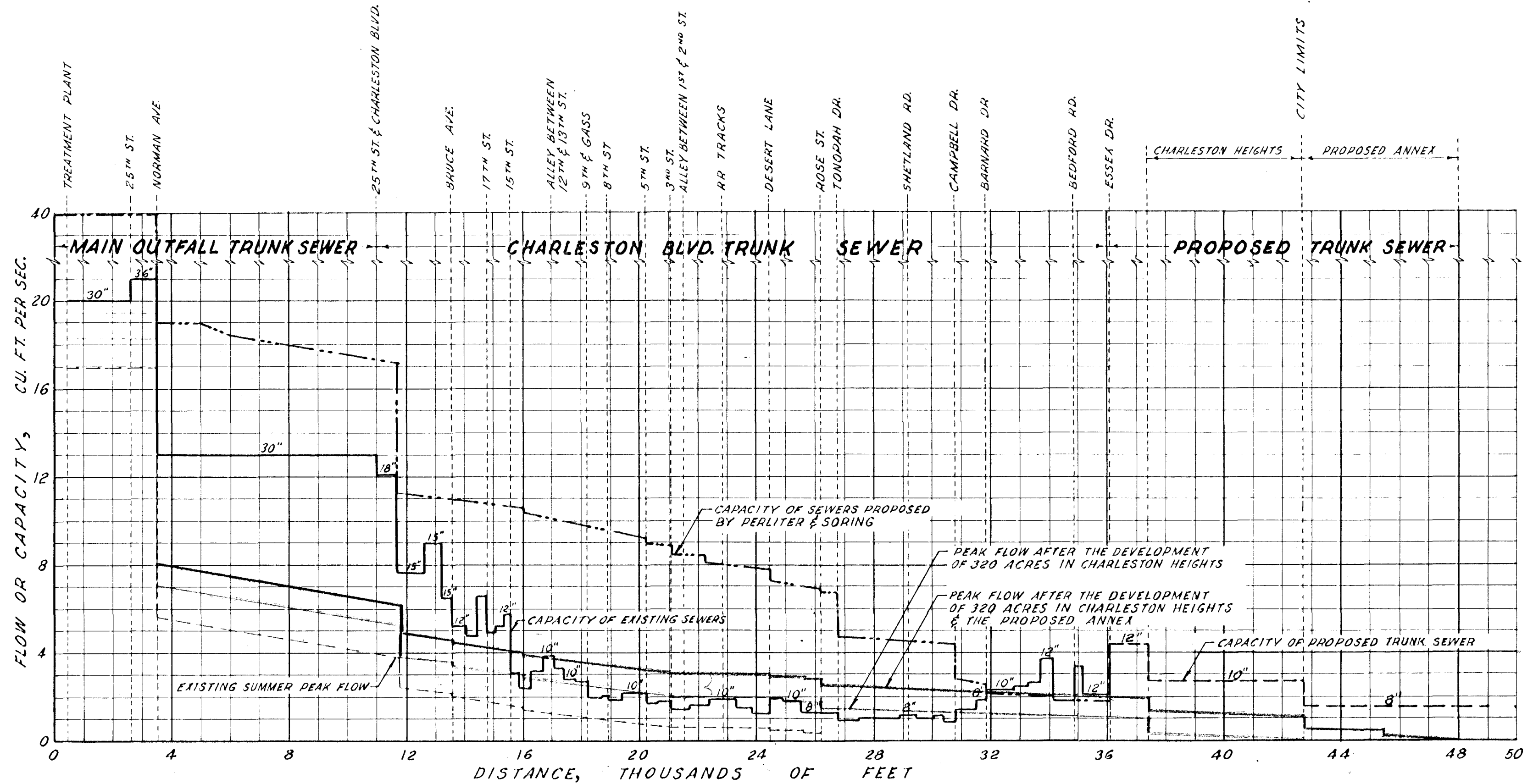
LOG OF BORINGS

- | | |
|-----------------------------------------------------------|------------------------------------------------------|
| HOLE NO.1 0-1/2' SILTY SAND, 1/2' CALICHE. | HOLE NO.16 0' CALICHE. |
| HOLE NO.2 0-9' SILTY SAND, GRAVEL, & COBBLES, 9' CALICHE. | HOLE NO.17 0' CALICHE. |
| HOLE NO.3 0-8' SILTY SAND, GRAVEL, & COBBLES, 8' CALICHE. | HOLE NO.18 0-1' SILTY SAND & GRAVEL, 1' CALICHE. |
| HOLE NO.4 0-4' SILTY SAND & GRAVEL, 4' CALICHE. | HOLE NO.19 0-1' SILTY SAND & GRAVEL, 1' CALICHE. |
| HOLE NO.5 0-4' SILTY SAND & GRAVEL, 4' CALICHE. | HOLE NO.20 0' CALICHE. |
| HOLE NO.6 0-4' SILTY SAND & GRAVEL, 4' CALICHE. | HOLE NO.21 0-1' SILTY SAND & GRAVEL, 1' CALICHE. |
| HOLE NO.7 0-3' SILTY SAND & GRAVEL, 3' CALICHE. | HOLE NO.22 0-1' SILTY SAND & GRAVEL, 1' CALICHE. |
| HOLE NO.8 0-2' SILTY SAND & GRAVEL, 2' CALICHE. | HOLE NO.23 0-1' SILTY SAND & GRAVEL, 1' CALICHE. |
| HOLE NO.9 0-3' SILTY SAND & GRAVEL, 3' CALICHE. | HOLE NO.24 0-1' SILTY SAND & GRAVEL, 1' CALICHE. |
| HOLE NO.10 0-3' SILTY SAND & GRAVEL, 3' CALICHE. | HOLE NO.25 0' CALICHE. |
| HOLE NO.11 0-3' SILTY SAND & GRAVEL, 3' CALICHE. | HOLE NO.26 0-1/2' SILTY SAND & GRAVEL, 1/2' CALICHE. |
| HOLE NO.12 0-1' SILTY SAND & GRAVEL, 1' CALICHE. | HOLE NO.27 0-1/2' SILTY SAND & GRAVEL, 1/2' CALICHE. |
| HOLE NO.13 0' CALICHE. | HOLE NO.28 0-3/4' SILTY SAND & GRAVEL, 3/4' CALICHE. |
| HOLE NO.14 0-2' SILTY SAND & GRAVEL, 2' CALICHE. | HOLE NO.29 0-1' SILTY SAND & GRAVEL, 1' CALICHE. |
| HOLE NO.15 0-3' SILTY SAND & GRAVEL, 3' CALICHE. | HOLE NO.30 0-1' SILTY SAND & GRAVEL, 1' CALICHE. |
| | HOLE NO.31 0-1/2' SILTY SAND & GRAVEL, 1/2' CALICHE. |

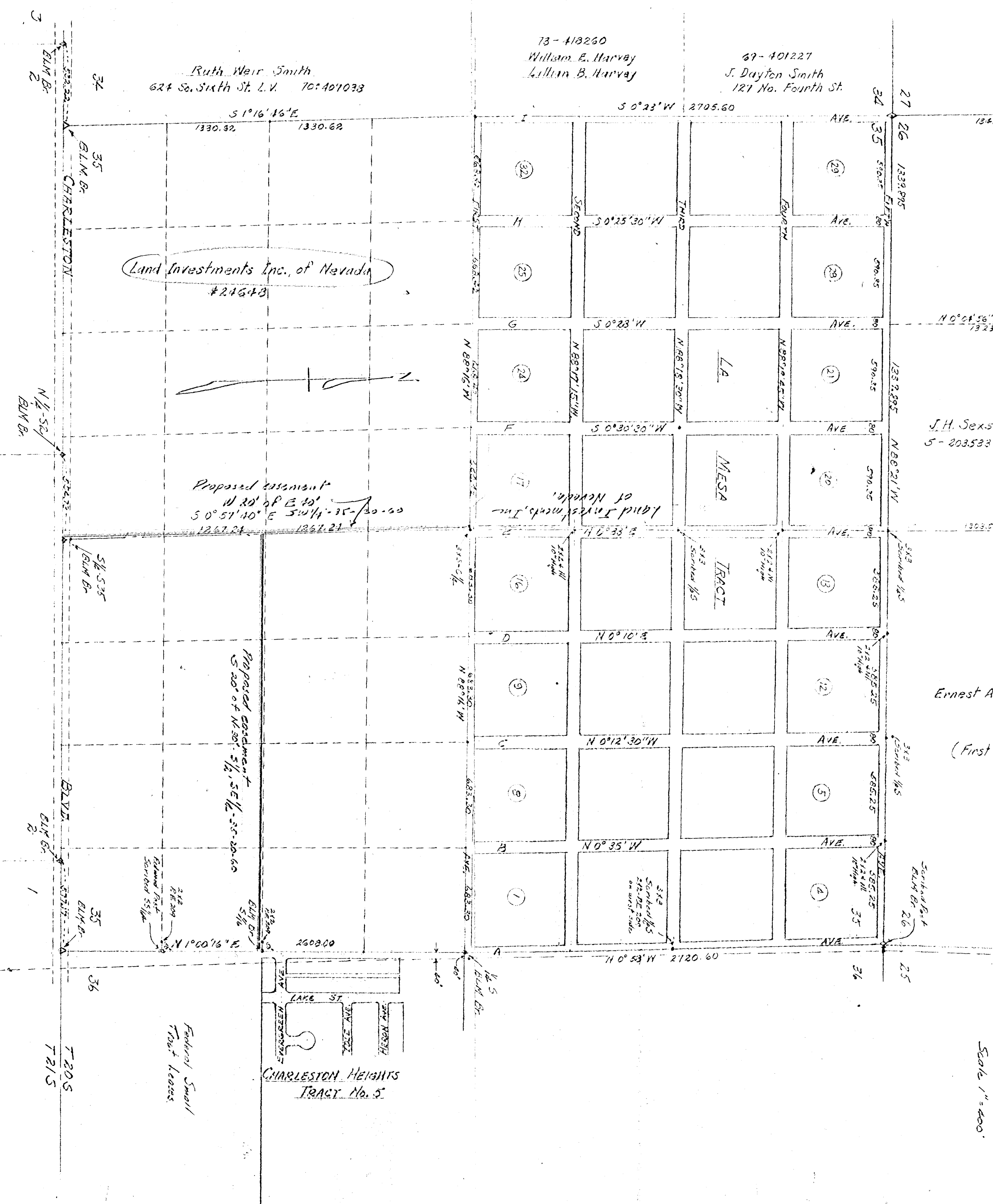
NOTE: ALL BORINGS WERE HALTED DUE TO THE PRESENCE OF CALICHE

UNSUBDIVIDED AREA
LAS VEGAS, NEV.

11-9-54 DATE	DONALD R. WARREN CO. ENGINEERS	ES-1215 JOB NO.
BJS DRAWN	LOS ANGELES CALIF.	
CHECKED		1 DRAWING NO.



**FLOW DIAGRAM
 OF
 TRUNK SEWER
 FROM PROPOSED ANNEX TO TREATMENT PLANT**



Ruth Weir Smith
624 So. Sixth St. L.V. 70:40'1038

73-418260
William E. Harvey
Lillian B. Harvey

69-401227
J. Dayton Smith
121 No. Fourth St.

Land Investments Inc., of Nevada
#21643

Proposed easement
W 20' of E 40'
S 0°51'40" E 50' 1/4 - 35-20-60
1267.84 1267.21

Proposed easement
S 20' of N 30' 5/8" SE 1/4 - 35-20-60

CHARLESTON HEIGHTS
TRACT No. 5

Federal Small
Tract Leases

Scale 1" = 400'