

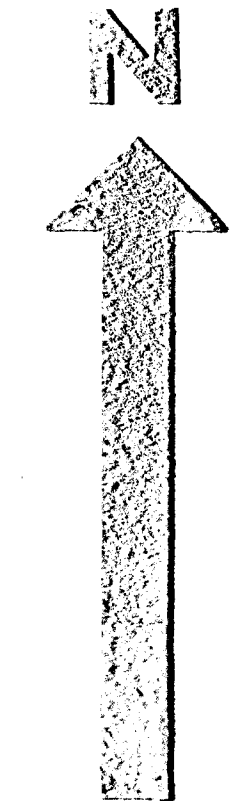
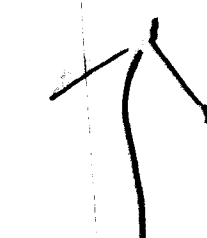
CHARLESTON

BLVD.

33

34

A-B-C



DRIVE

WESTCLIFF DRIVE

DURANGO

ALTA

DRIVE

HELEN M. SMITH  
ELEM. SCHOOL

SHOPPING CENTER

CHARLESTON BLVD.

BONANZA HIGH SCHOOL

OAKEY BLVD.

OAKEY BLVD.

ANGEL PARK

DURANGO DR.

CIMARRON ROAD

VALADEZ AVE.

PLACIU ST.

FAIRFIELD ST.

BUFFALO DR.

TIOGA WAY

WILLIAM ST.

WACATE CRISTO WAY

HOLMBY ST.

DEL REY AVE.

TEANAVA AVE.

BELCASTRO ST.

DOE AVE.

MONTESSOURI ST.

ROSANNA ST.

MARGARITA ST.

SANTA

ADOLE COURT

WILLIAM ST.

SILVER

LOWEN LANE

D. K. ADCOCK SCHOOL

SINGINGWOOD

LINDY DRIVE

BRINTON LANE

SHANNEC AVENUE

ELLEN LANE

BRISTOL WAY

EVERGREEN AVE.

BANNOCK WAY

CISACQ WAY

WINDY HILL

WINDY HILL

WINDY HILL

WINDY HILL

WINDY HILL

WESTPORTER HOMES

REC AREA

WINDY HILL

WINDY HILL

WINDY HILL

WINDY HILL

WINDY HILL

WINDY HILL

WINDY HILL

WINDY HILL

WINDY HILL

WINDY HILL

WINDY HILL

WINDY HILL

WINDY HILL

WINDY HILL

WINDY HILL

WINDY HILL

WINDY HILL

WINDY HILL

WINDY HILL

WINDY HILL

WINDY HILL

WINDY HILL

WINDY HILL

WINDY HILL

WINDY HILL

WINDY HILL

WINDY HILL

WINDY HILL

WINDY HILL

WINDY HILL

WINDY HILL

WINDY HILL

WINDY HILL

WINDY HILL

WINDY HILL

WINDY HILL

WINDY HILL

WINDY HILL

WINDY HILL

WINDY HILL

WINDY HILL

WINDY HILL

WINDY HILL

WINDY HILL

WINDY HILL

WINDY HILL

WINDY HILL

WINDY HILL

WINDY HILL

WINDY HILL

WINDY HILL

WINDY HILL

WINDY HILL

WINDY HILL

WINDY HILL

WINDY HILL

WINDY HILL

WINDY HILL

WINDY HILL

WINDY HILL

WINDY HILL

WINDY HILL

WINDY HILL

WINDY HILL

WINDY HILL

WINDY HILL

WINDY HILL

WINDY HILL

WINDY HILL

WINDY HILL

WINDY HILL

WINDY HILL

WINDY HILL

WINDY HILL

WINDY HILL

WINDY HILL

WINDY HILL

WINDY HILL

WINDY HILL

WINDY HILL

WINDY HILL

WINDY HILL

WINDY HILL

WINDY HILL

WINDY HILL

WINDY HILL

WINDY HILL

WINDY HILL

WINDY HILL

WINDY HILL

WINDY HILL

WINDY HILL

WINDY HILL

WINDY HILL

WINDY HILL

WINDY HILL

WINDY HILL

WINDY HILL

WINDY HILL

WINDY HILL

WINDY HILL

WINDY HILL

WINDY HILL

WINDY HILL

WINDY HILL

WINDY HILL

WINDY HILL

WINDY HILL

WINDY HILL

WINDY HILL

WINDY HILL

WINDY HILL

WINDY HILL

WINDY HILL

WINDY HILL

WINDY HILL

WINDY HILL

WINDY HILL

WINDY HILL

WINDY HILL

WINDY HILL

WINDY HILL

WINDY HILL

WINDY HILL

WINDY HILL

WINDY HILL

WINDY HILL

WINDY HILL

WINDY HILL

WINDY HILL

WINDY HILL

WINDY HILL

WINDY HILL

WINDY HILL

WINDY HILL

WINDY HILL

WINDY HILL

WINDY HILL

WINDY HILL

WINDY HILL

WINDY HILL

WINDY HILL

WINDY HILL

WINDY HILL

WINDY HILL

WINDY HILL

WINDY HILL

WINDY HILL

WINDY HILL

WINDY HILL

WINDY HILL

WINDY HILL

WINDY HILL

WINDY HILL

WINDY HILL

WINDY HILL

WINDY HILL

WINDY HILL

WINDY HILL

WINDY HILL

WINDY HILL

WINDY HILL

WINDY HILL

WINDY HILL

WINDY HILL

WINDY HILL

WINDY HILL

WINDY HILL

WINDY HILL

WINDY HILL

WINDY HILL

WINDY HILL

WINDY HILL

WINDY HILL

WINDY HILL

WINDY HILL

WINDY HILL

WINDY HILL

WINDY HILL

WINDY HILL

WINDY HILL

WINDY HILL

WINDY HILL

WINDY HILL

WINDY HILL

WINDY HILL

WINDY HILL

WINDY HILL

WINDY HILL

WINDY HILL

WINDY HILL

WINDY HILL

WINDY HILL

WINDY HILL

WINDY HILL

WINDY HILL

WINDY HILL

WINDY HILL

WINDY HILL

WINDY HILL

WINDY HILL

WINDY HILL

WINDY HILL

WINDY HILL

WINDY HILL

WINDY HILL

WINDY HILL

WINDY HILL

WINDY HILL

WINDY HILL

WINDY HILL

WINDY HILL

WINDY HILL

WINDY HILL

WINDY HILL

WINDY HILL

WINDY HILL

WINDY HILL

WINDY HILL

WINDY HILL

WINDY HILL

WINDY HILL

WINDY HILL

WINDY HILL

WINDY HILL

WINDY HILL

WINDY HILL

WINDY HILL

WINDY HILL

WINDY HILL

WINDY HILL

WINDY HILL

WINDY HILL

WINDY HILL

WINDY HILL

WINDY HILL

WINDY HILL

WINDY HILL

WINDY HILL

WINDY HILL

WINDY HILL

WINDY HILL

WINDY HILL

WINDY HILL

WINDY HILL

WINDY HILL

WINDY HILL

WINDY HILL

WINDY HILL

WINDY HILL

WINDY HILL

WINDY HILL

WINDY HILL

WINDY HILL

WINDY HILL

WINDY HILL

WINDY HILL

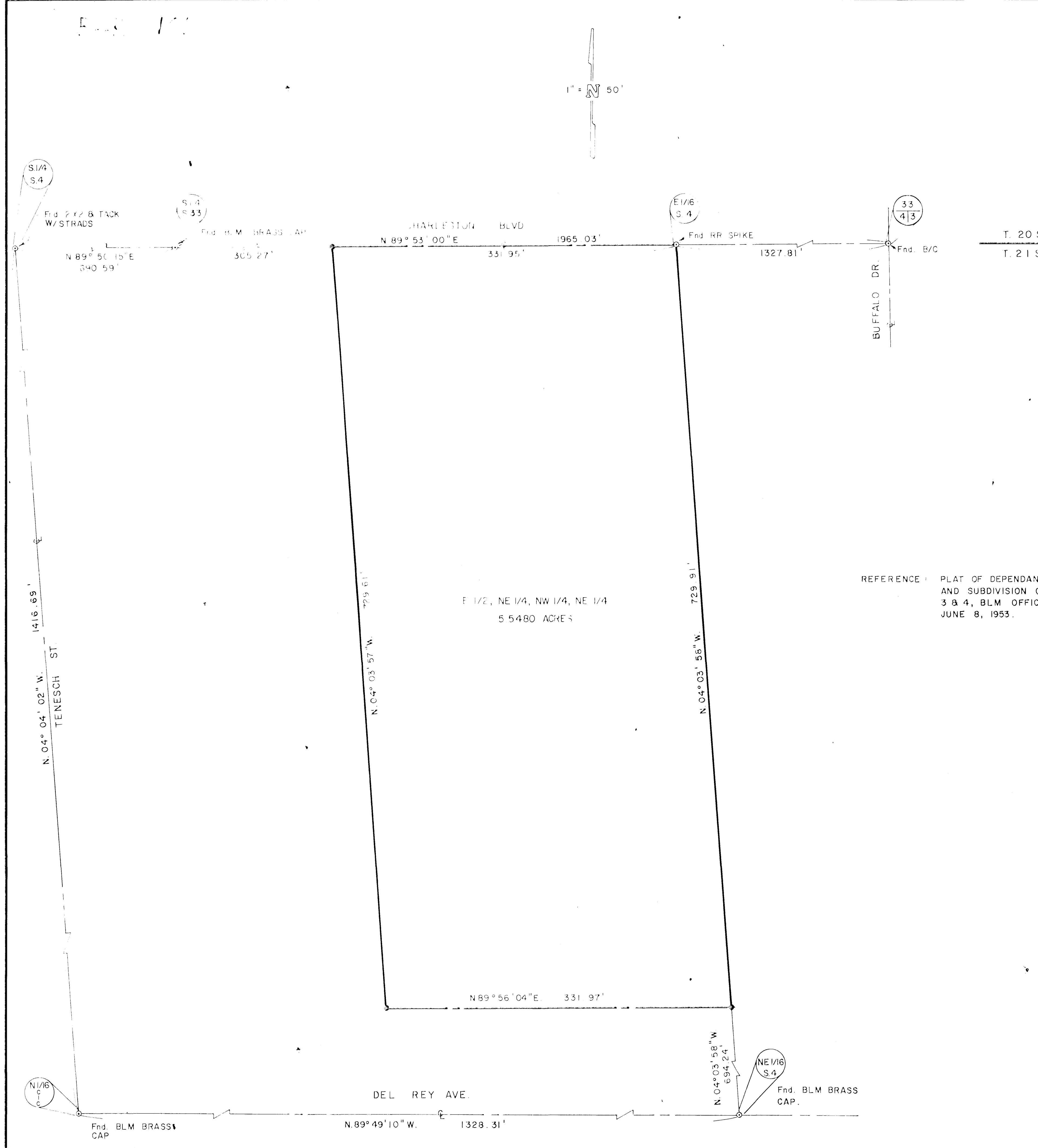
WINDY HILL

WINDY

**SURVEYOR'S CERTIFICATE**

I, John L. Swift, a duly registered and licensed Surveyor in the State of Nevada, as an agent for V.T.N. Nevada, do hereby certify that the survey of the land and shown hereon was made under my direct supervision at the instance of Charleston Commercial Properties that the survey was completed on 1/24/85 and that the points found and set are correctly shown hereon. This map does not constitute a subdivision as defined by Nevada State Law.

John L. Swift 1/24/85  
 REGISTERED LAND SURVEYOR  
 NEV. CERT. NO. 3343



T. 20 S.  
 T. 21 S.

**LEGAL DESCRIPTION**

Being the East Half (E1/2) of the Northeast Quarter (NE1/4) of the Northwest Quarter (NW 1/4) of the Northeast Quarter (NE1/4) of Section 4, T. 21 S., R. 60 E., M.D.M., Clark County, Nevada, also known as Government Lot 9, and being further described as follows:

BEGINNING at the Northeast Corner (NE Cor.) of the Northwest Quarter (NW1/4) of the Northeast Quarter (NE1/4) of said Section 4, thence S. 04°03'58" E., along the East line thereof, 729.91 feet; thence S. 89°56'04" W., 331.97 feet; thence N. 04°03'57" W., 729.61 feet; thence N. 89°53'00" E., 331.95 feet to the POINT OF BEGINNING.

Containing an area of 5.5480 acres, more or less.

REFERENCE: PLAT OF DEPENDANT RESURVEY AND SUBDIVISION OF SECTIONS 3 & 4, BLM OFFICE, DATED JUNE 8, 1953.

**LEGEND**

- ⊕ CENTER LINE
- ⊙ FOUND POINT AS INDICATED
- SET REBAR AND AL CAP, R.L.S. 6201
- Fnd FOUND

ANNEXED TO THE CITY OF LAS VEGAS UNDER ORDINANCE No. 3164

**BASIS OF BEARING**

N. 89°53'00" E., being the South line of the Southeast Quarter (SE1/4) of Section 33, T. 20 S., R. 60 E., M.D.M., as shown by a record of Survey on file in the Clark County, Nevada, Recorder's Office in File 27, Page 88.

|  |                      |   |              |
|--|----------------------|---|--------------|
| CONSULTING ENGINEERS • PLANNERS  |                      |   |              |
| <b>RECORD OF SURVEY</b><br>FOR<br><b>ANNEXATION</b><br>A PORTION OF THE NW 1/4 OF THE NE 1/4, OF<br>SEC. 4, T. 21 S., R. 60 E., M.D.M.,<br>CLARK COUNTY, NEVADA. |                      |   |              |
| SCALE 1" = 50'   | WO NO CRJ<br>DRN EDY | DATE 1/30/85                                  | SHEET 1 OF 1 |
| CLARK COUNTY, NEVADA RECORDS<br>JOAN L. SWIFT, RECORDER<br>FEE \$ 100.00 DEPUTY \$ 50.00   |                      | RECORDS BOOK NO. <u>2111</u><br>PAGE <u>1</u> |              |