

**Planning & Development Department
Scanning Cover Sheet**

Case No A-0003-54

APN

Location BONANZA RD & "H" ST

Applicant LYDELL CLEMENT

Subject

TO OBTAIN ARCHITECTURAL APPROVAL FOR A ASSOCIATED
GAS STATION ON THE NORTHEAST CORNER OF
BONANZA RD & "H" ST LOTS 9-12 INCLUSIVE BLOCK 7



U-2-54 - The application of Charleston Park Mutual Homes Inc. to set up a temporary concrete batching plant on Lot 145, Charleston Park Tract #2, which is generally located between Eastern Avenue and the Southern Nevada Power Company R/W for a period of approximately six months, was presented.

After considerable discussion of this application Commissioner Phelps moved that the application be approved inasmuch as it was felt that such use would not be detrimental to surrounding properties.

U-3-54 - The application of Charleston Park Mutual Homes, Inc. to set up a temporary construction yard which will contain the superintendent's office and which will be used for storage of equipment and materials for the job for a period of approximately six months, on the property located immediately South of Oakey Boulevard between Burnham Street and Eastern Avenue, was presented.

After considerable discussion Commissioner Phelps moved that the application be approved.

Commissioner Schroer seconded the motion and it was unanimously carried.

A-2-54 - The application of Henry Ingebrigtsen to obtain architectural approval of a Nursery to be established on North 5th Street next to the Alpine Village Inn.

Discussion of this application was given after which Commissioner Schroer moved that the application be approved.

Motion was seconded by Commissioner Rather and unanimously carried.

A-3-54 - The application of Lydell Clement for architectural approval of an Associated Gas Station on the northeast corner of Bonanza and "H" Streets, Lots 9 - 12, inclusive, Block 7, Original Las Vegas Townsite.

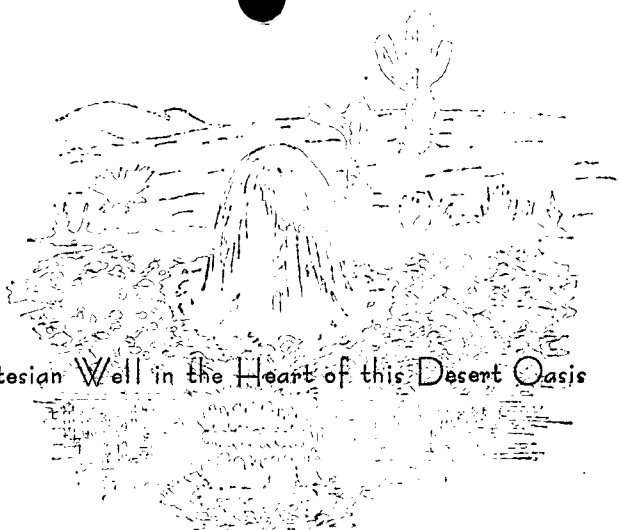
Commissioner Schroer, after discussion, moved that the application be approved.

Commissioner Rather seconded the motion and it was unanimously carried.

SUBDIVISIONS

McNeil Tract #3 - The final map of this Subdivision which is located in a portion of

CITY OF LAS VEGAS
NEVADA



Artesian Well in the Heart of this Desert Oasis

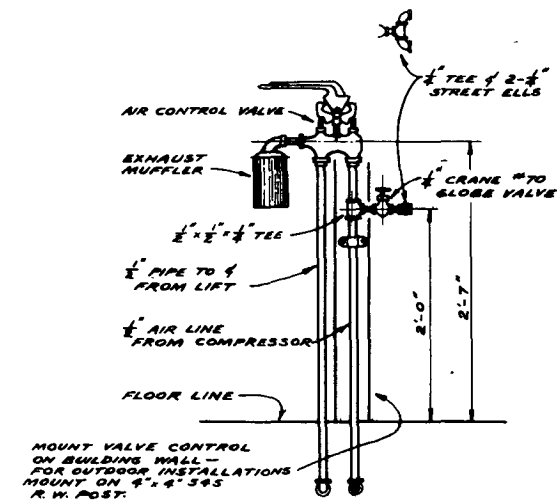
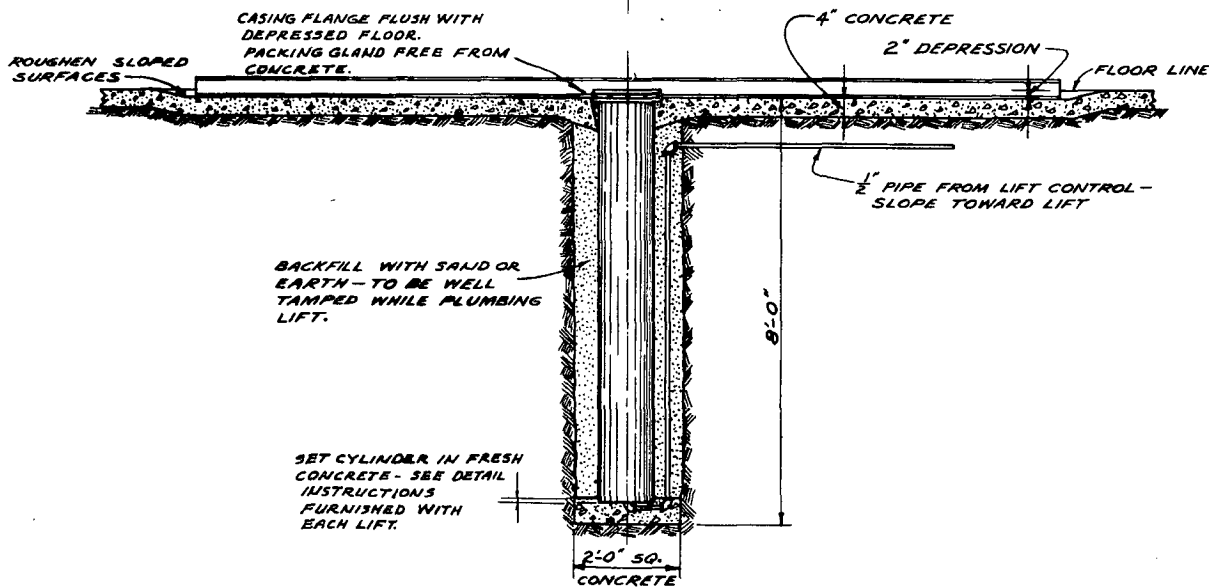
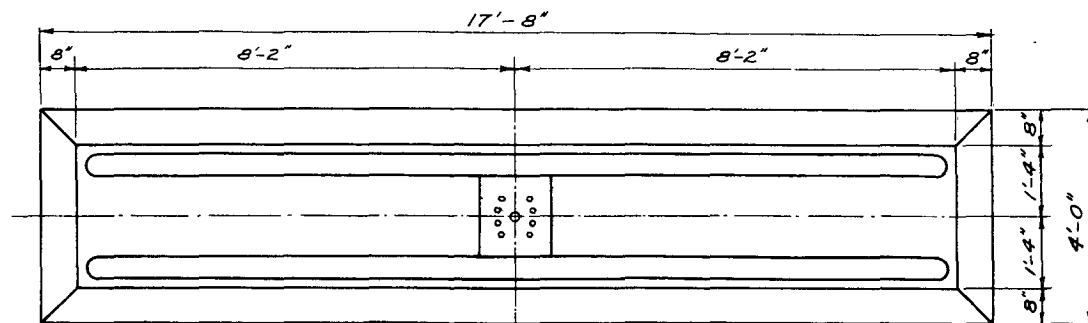
January 25, 1953

City Planning Commission
City Hall
Las Vegas, Nevada

Gentlemen:

The application of Lydell Clement for architectural supervision on an Associated Gas Station on the northeast corner of Bonanza and "H" Street, Lots #9 - 12, inclusive, Block #7, Original Las Vegas Townsite.

Lydell Clement
by George M. Clark.



DETAIL OF LIFT CONTROL

HYDRAULIC LIFT INSTALLATION

TIDE WATER ASSOCIATED OIL CO.			
SAN FRANCISCO		CALIFORNIA	
HYDRAULIC LIFT INSTALLATION FOR SERVICE STATIONS			
BY	EXPR	SCALE	DWG NO.
CH	DATE	1-8-52	0321-03872

SUPersedes DWG OF SAME No. DATED 3-7-38

1" VENT-RETURN BEND TO BE LOCATED AS SHOWN ON S.S. LAYOUT

This vent to be run up rear of bldg. in the same manner as the gasoline vents

INSTALL 10" ROUND FILL BOX & COVER IN CONC. SLAB

INSTALL 8" ROUND FILL BOX & COVER IN CONC. SLAB

3" LOOSE PIPE CAP

LIFT RM FLOOR

24" MIN

3"

SLOPE

2"

3"

3" x 3" x 2" TEE

WASTE OIL TANK

FOR LOCATION SEE SERVICE STA. LAYOUT

SCALE 3/4" = 1'-0"

SUPERSEDES DWG OF SAME NO. DATED 7-25-50

TYPICAL ARRANGEMENT OF WASTE OIL TANK

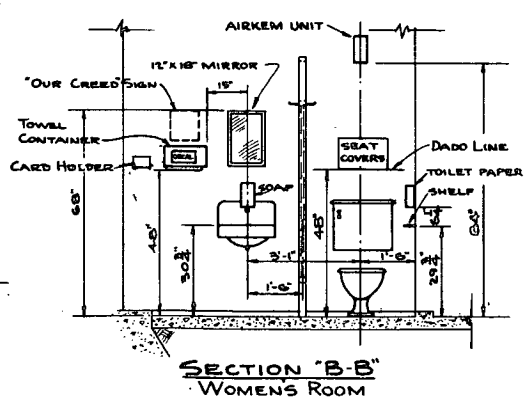
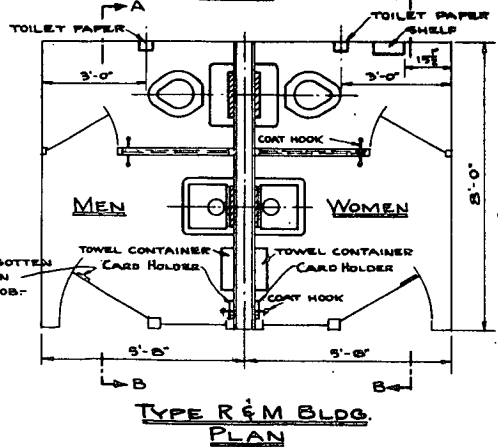
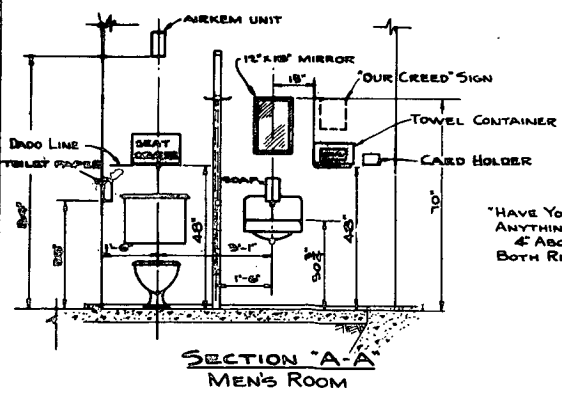
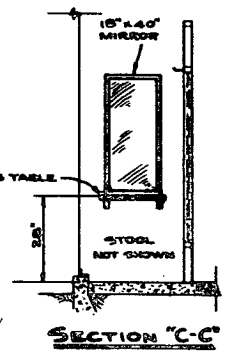
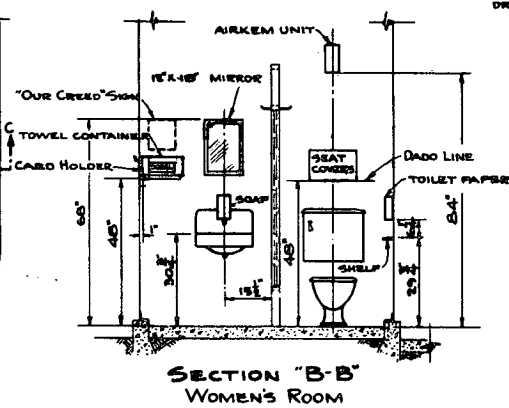
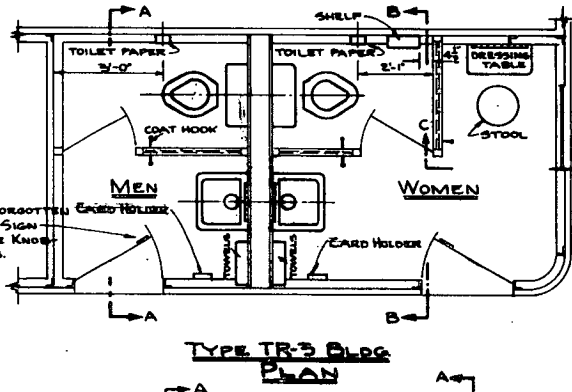
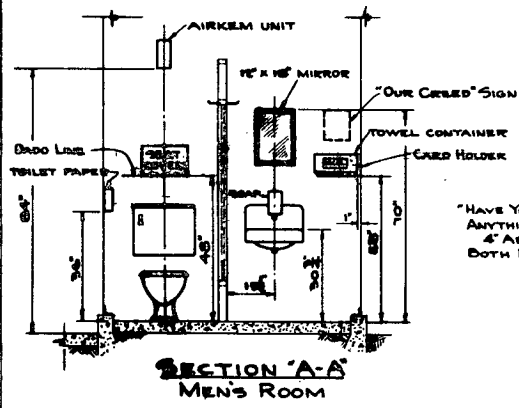
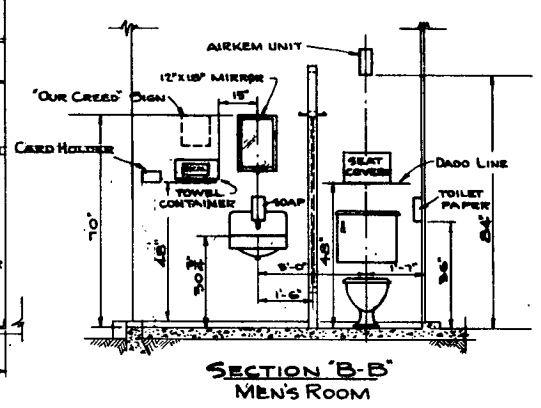
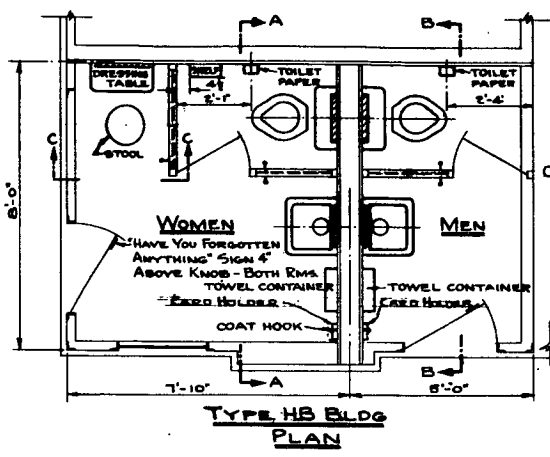
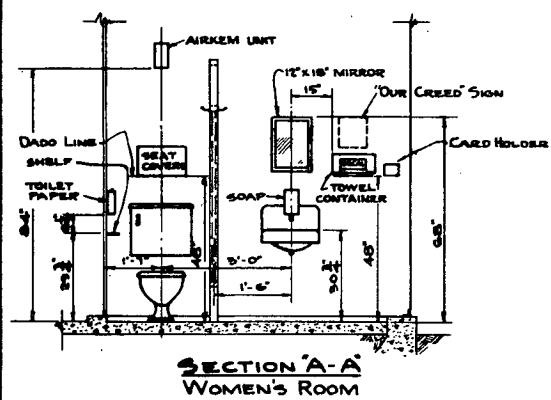
DR. LAO

TIDE WATER ASSOCIATED OIL CO. SAN FRANCISCO CALIFORNIA

DATE 2-14-52

DWG NO. 0321-E3558

ACCOMPANYING DRAWINGS	
NUMBER	TITLE



NOTE
 PAINT INTERIOR WALLS & CEILING NO. 67 CREAM.
 PAINT 4\"/>

TIDE WATER ASSOCIATED OIL CO. ASSOCIATED
 DIVISION
 SAN FRANCISCO CALIFORNIA

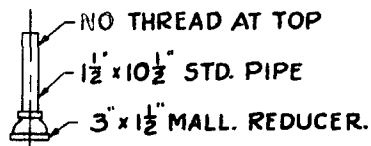
STANDARD ARRGT. OF COMFORT STATIONS

DR. DATE	APPR. DATE	SCALE	DWG. NO.
		1" = 1'-0"	0321-04941

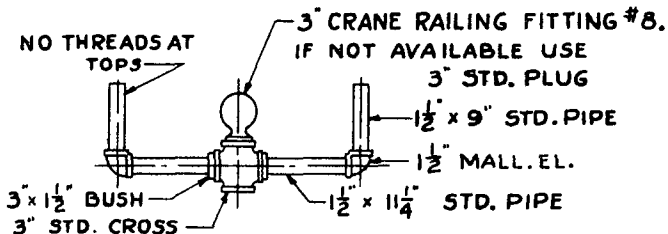
REV 4-3-51

SINGLE TOP - REF #2
OR DOUBLE TOP - REF #3

STD. I.P. THREAD
TO BE PROTECTED
WITH RING FOR
SHIPPING

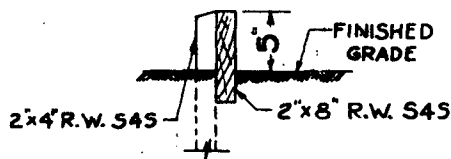


**TOP FOR SINGLE
REFLECTOR.
REF. #2**



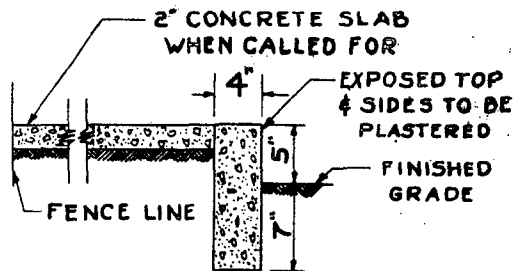
**TOP FOR DOUBLE
REFLECTOR.
REF. #3**

NOTE - REF. #2 AND REF. #3
FURNISHED WITH POLE - SEE
PARTICULAR SERVICE STATION
LAYOUT FOR REQUIREMENT

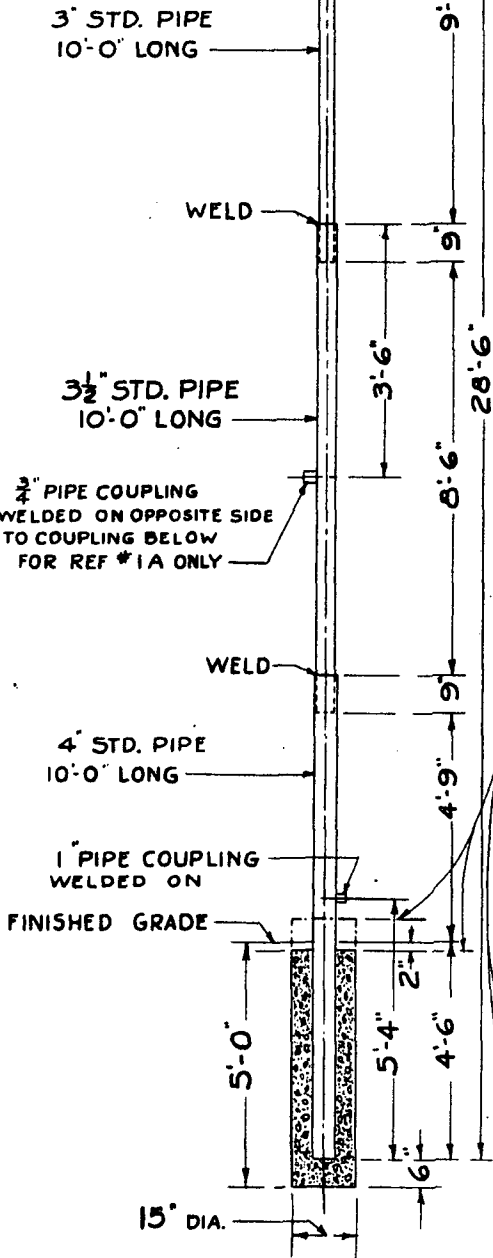


**SECTION OF STANDARD
WOODEN CURB.
REF. #5**

TOP OF CONCRETE BASE
TO BE 2" BELOW FINISHED
GRADE AT CORNER LOCATIONS
AND AT SAME ELEVATION
AS TOP OF CURB WHEN
INSTALLED ADJOINING CURB.



**SECTION OF STANDARD
CONCRETE CURB.
REF. #4**



**24 FT. ELECTROLIER.
REF. #1
REF. #1A FOR NEON SIGN**

CONDUIT TO BE
INSTALLED BEFORE
POURING CONCRETE.
LOCATE ON SIDE
AWAY FROM CURB.

TIDE WATER ASSOCIATED OIL CO. ASSOCIATED DIVISION			
SAN FRANCISCO		CALIFORNIA	
ELECTROLIERS AND CURBS FOR SERVICE STATIONS			
DR. J.S. CLE.	APPR.	SEAL	DWG. NO.
		NONE	0321-D3871
		DATE	4-1-48

SUPERSEDES DWG. OF
SAME NO. - DATED 3-7-38