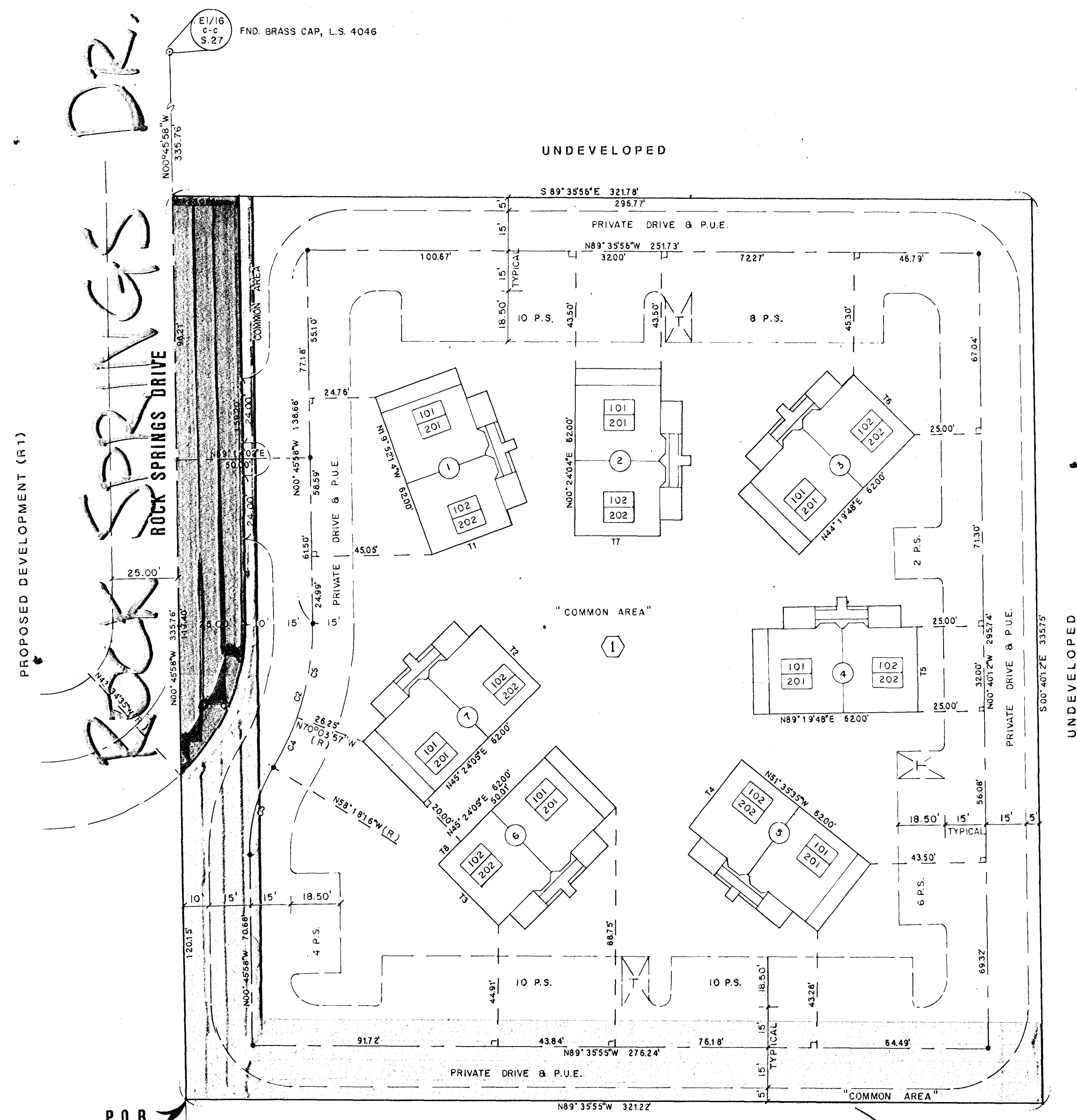


WASHINGTON AVE.

**REDROCK SPRINGS CONDOMINIUMS**

BEING THE SW1/4 OF THE NW1/4 OF THE NE1/4 OF THE SE1/4 OF SECTION 27, T.20S., R.60E., M.D.M.,  
CITY OF LAS VEGAS, CLARK COUNTY, NEVADA.

↑  
110



**CURVE TABLE**

NO.	BEARING	CHORD	DELTA	RADIUS	LENGTH	TAN
C1	N23°19'43"E	61.24'	48°11'23"	75.00'	53.08'	33.54'
C2	N15°27'53"E	55.90'	32°27'42"	100.00'	56.66'	29.11'
C3	N15°27'53"E	33.54'	32°27'42"	60.00'	33.99'	17.47'
C4	N25°48'54"E	20.49'	11°45'41"	100.00'	20.53'	10.30'
C5	N09°35'03"E	35.93'	20°42'01"	100.00'	36.13'	18.26'

**COURSE TABLE**

NO.	BEARING	DISTANCE
T1	N70°07'46"E	32.00'
T2	N44°35'55"W	32.00'
T3	N44°35'55"W	32.00'
T4	N38°24'25"E	32.00'
T5	N00°40'12"W	32.00'
T6	N45°40'12"W	32.00'
T7	N89°35'56"W	32.00'
T8	N45°24'05"E	11.99'

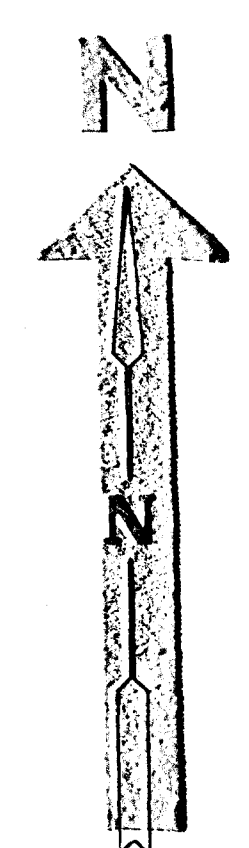
**LEGEND**

- 101 — FIRST FLOOR UNIT NUMBER
- 201 — SECOND FLOOR UNIT NUMBER
- 7 — BUILDING NUMBER
- 1 — BLOCK NUMBER
- C2 — CURVE NUMBER
- T3 — COURSE NUMBER
- (R) — RADIAL LINE
- P.O.B. — POINT OF BEGINNING
- P.U.E. — PUBLIC UTILITY EASEMENT
- | — BUILDING TIE LINE PERPENDICULAR TO CENTERLINE
- ⊙ — FOUND POINT AS INDICATED
- ⊙ — SET 5/8" REBAR & ALUM. CAP W/BRASS CAP TIES, L.S. 6201
- ⊙ — TRASH ENCLOSURE
- 10 P.S. — NUMBER OF PARKING SPACES TOTAL SPACES = 50 (MIN. SIZE: 9' x 18')

PROPOSED DEVELOPMENT (R1)

ROCK SPRINGS DR.  
ROCK SPRINGS DRIVE

VAC-2-85



SCALE: 1" = 30'

NOTE - SEE SHEET 3 OF 3 FOR BUILDING DETAILS.