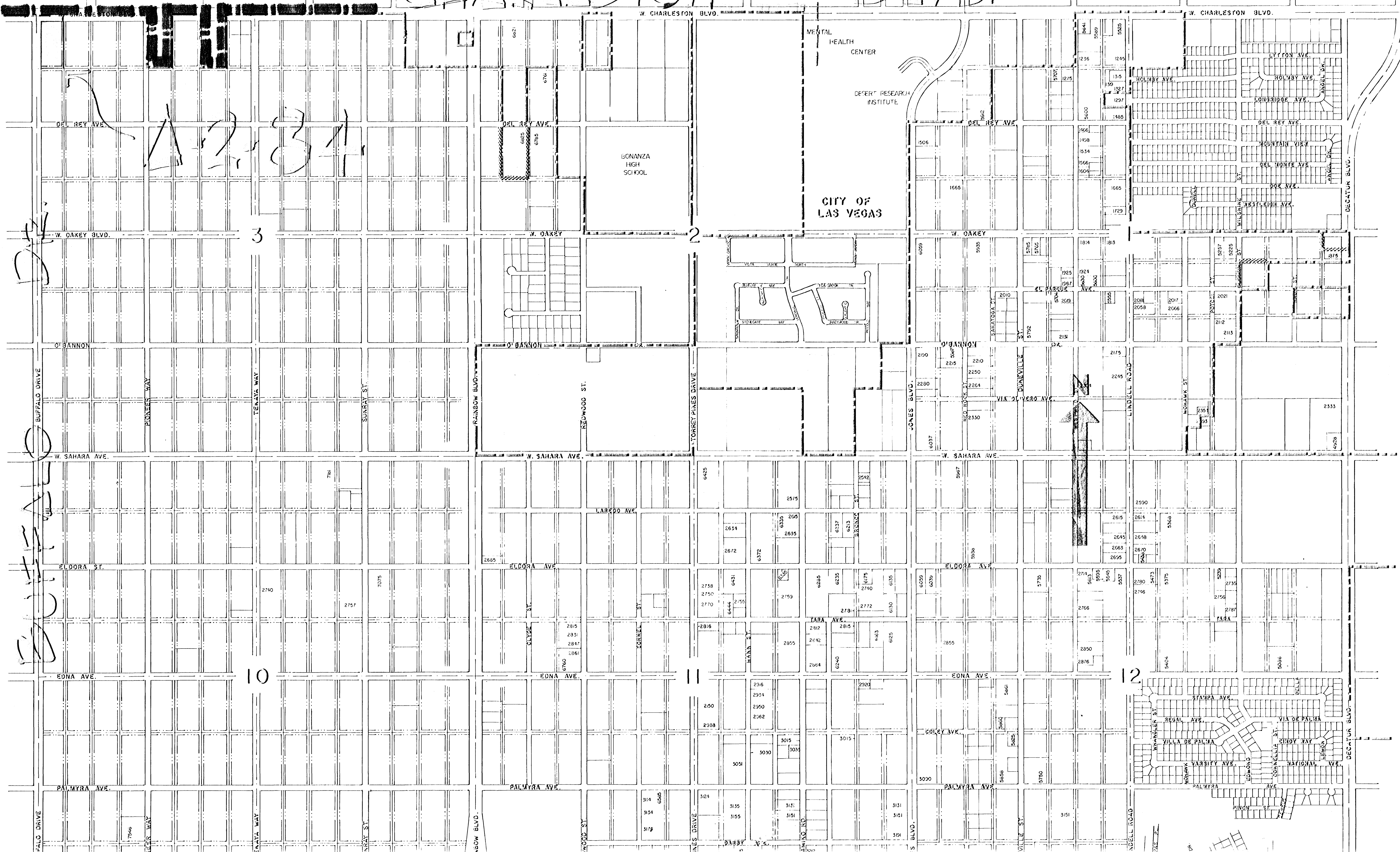


C.L.V.

CHARLESTON BLVD.



SURVEYOR'S CERTIFICATE

I, RUSSELL AVERY, (A-R-CANSTNO) (REGISTERED CIVIL ENGINEER AND LAND SURVEYOR IN THE STATE OF NEVADA AS AGENT FOR AVERY CORPORATION DO HEREBY CERTIFY THAT THIS MAP IS A TRUE AND CORRECT PLAT OF THE LAND SURVEYED BY ME OR UNDER MY DIRECTION AT THE INSTANCES OF MAURY ABRAMS
DATE WAS COMPLETED ON THE 20th DAY OF MAY 13 84
THIS SURVEY IS NOT A SUBDIVISION AS DEFINED BY NEVADA STATE LAW, AND IS NOT IN CONFLICT WITH THE REQUIREMENTS OF NRS 218.010 TO 218.630 INCLUSIVE.

Russell Avery
5-3-84

Russell Avery 5-3-84

RUSSELL AVERY, RCE/RML #0 2002 DATE A-R-CANSTNO, RCE/RLS-1211, DATE

BASIS OF BEARINGS

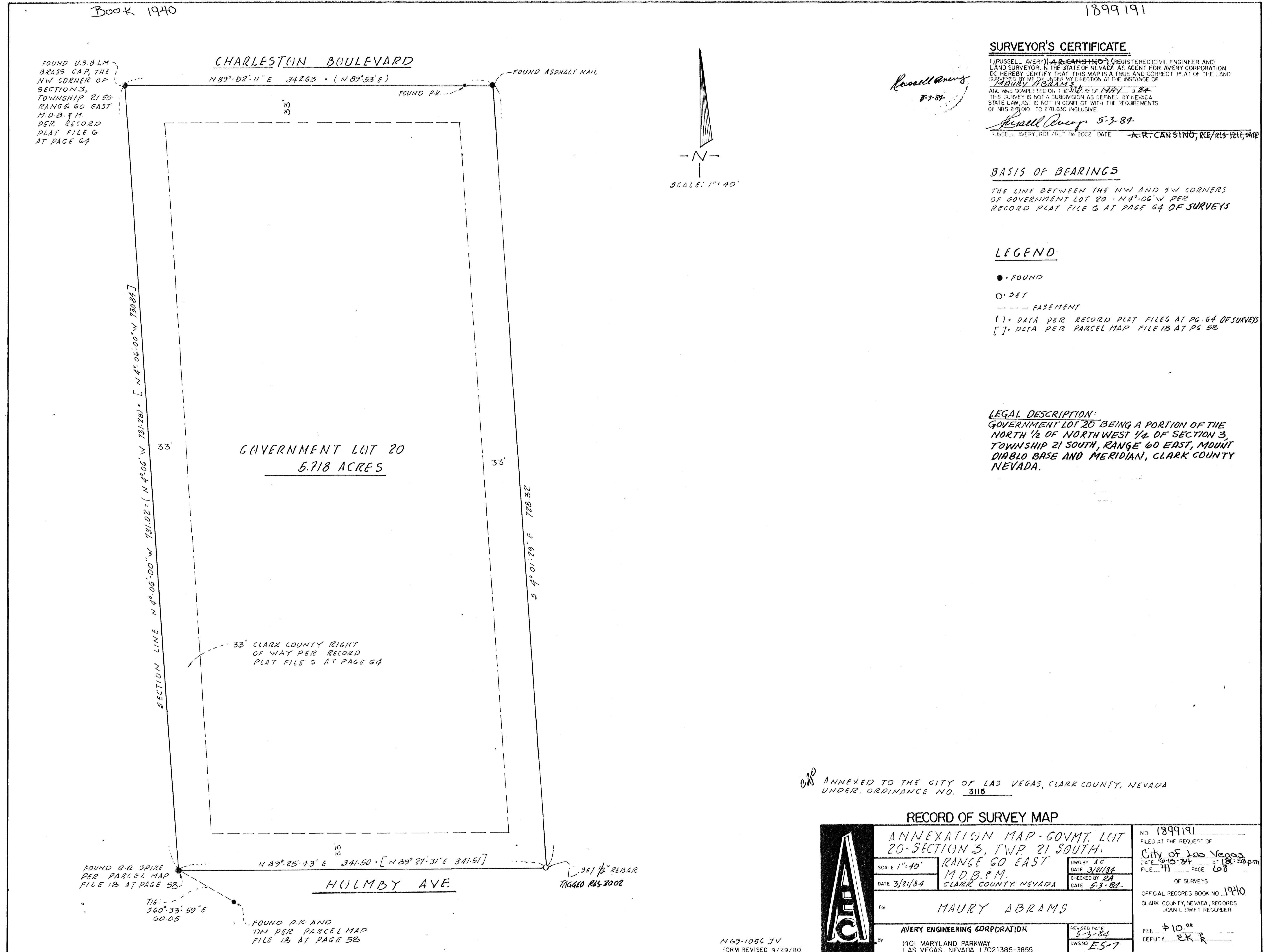
THE LINE BETWEEN THE NW AND SW CORNERS OF GOVERNMENT LOT 20 - N 4°-06' W PER RECORD PLAT FILE G AT PAGE 64 OF SURVEYS

LEGEND

- FOUND
- SET
- EASEMENT
- () = DATA PER RECORD PLAT FILE G AT PG. 64 OF SURVEYS
- [] = DATA PER PARCEL MAP FILE 1B AT PG. 58

LEGAL DESCRIPTION:

GOVERNMENT LOT 20 BEING A PORTION OF THE NORTH 1/2 OF NORTH WEST 1/4 OF SECTION 3, TOWNSHIP 21 SOUTH, RANGE 60 EAST, MOUNT Diablo Base and Meridian, CLARK COUNTY NEVADA.



ANNEXED TO THE CITY OF LAS VEGAS, CLARK COUNTY, NEVADA UNDER ORDINANCE NO. 3115

RECORD OF SURVEY MAP

AVERY ENGINEERING CORPORATION	ANNEXATION MAP - GOVMT LOT 20 - SECTION 3, TWP 21 SOUTH, RANGE 60 EAST		NO. 1899191
	M.D.B. & M. CLARK COUNTY, NEVADA		FILED AT THE REQUEST OF City of Las Vegas
	DATE 3/21/84	CHECKED BY RA	DATE 6-15-84 AT 12:58pm
	DATE 5-3-84	DATE 5-3-84	FILE 41 PAGE 68
For MAURY ABRAMS		OFFICIAL RECORDS BOOK NO. 1940	CLARK COUNTY, NEVADA, RECORDS JOAN L SWIFT REGISTER
AVERY ENGINEERING CORPORATION 1401 MARYLAND PARKWAY LAS VEGAS, NEVADA (702) 385-3855		REVISED DATE 5-3-84 EWS NO. E5-7	FEE \$10.00 DEPUTY EK R