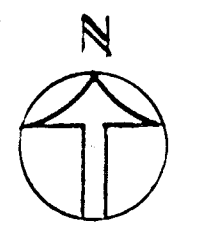


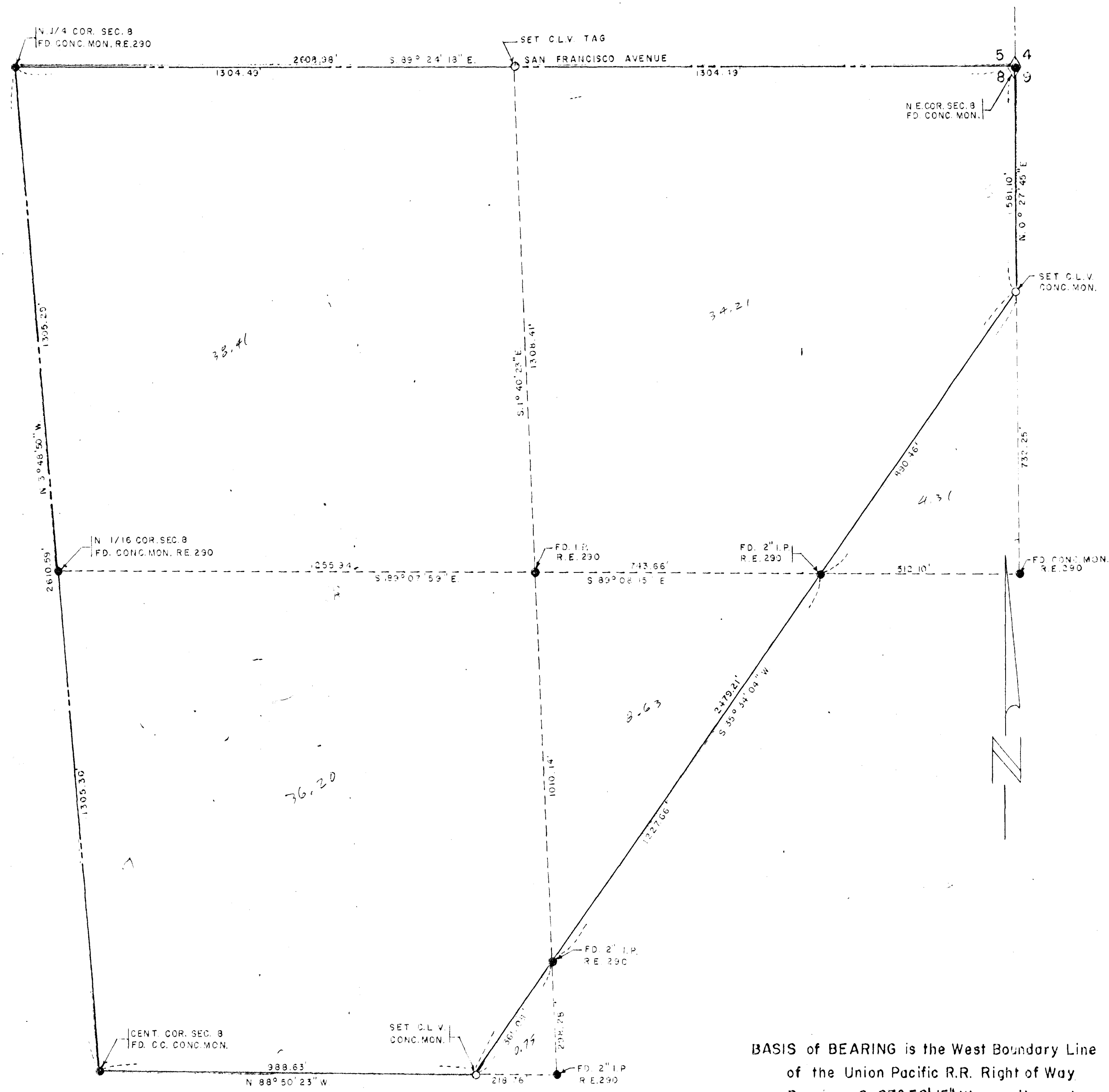
GENERAL DEVELOPMENT PLAN OF  
 RICHFIELD VILLAGE  
 LAS VEGAS, NEVADA

SCALE IN FEET 0 100 200 300 APRIL 22, 1959

TEDDY RICH ENTERPRISES · DEVELOPER

KENNETH F. JONES · LAND PLANNING CONSULTANT  
 305 GRANT AVENUE · SAN FRANCISCO, CALIFORNIA





I, L.A. HARRIS, A DULY REGISTERED ENGINEER & LAND SURVEYOR, do hereby certify that this map truly and correctly represents the results of a survey made under my supervision & completed on the 29<sup>th</sup> day of March, 1960 of and for the City of Las Vegas, Nevada. This survey is not a subdivision as defined in Planning & Zoning Laws as shown in 1943-1949 Supplement, Nevada Compiled Laws.

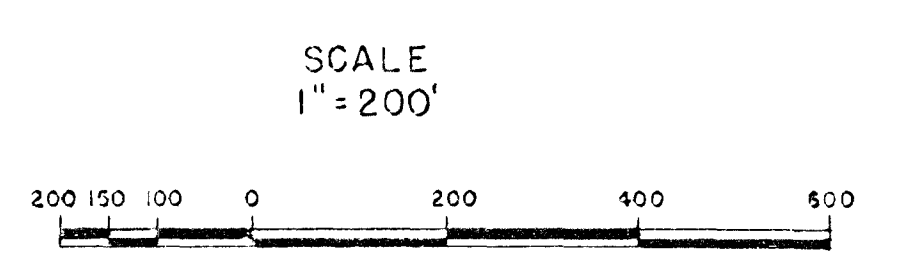
L.A. Harris  
REGISTERED ENGINEER & LAND SURVEYOR  
NEVADA R.E. NO. 24

APPROVED this 31 day of March 1960

Richard P. Stewart  
CITY ENGINEER  
NEVADA R.E. 396

BASIS of BEARING is the West Boundary Line of the Union Pacific R.R. Right of Way Bearing S. 27° 56' 15" W. on mile post No. 332.05 of record in office of Chief Engr. of U.P.R.R. Omaha, Neb.

● MONUMENT FOUND  
○ MONUMENT SET



193109  
*City of Las Vegas*  
4-6-60 11:30 AM  
238  
dh [Signature]

193109  
*City of Las Vegas*  
4-6-60 11:30 AM  
238  
dh [Signature]

CITY OF LAS VEGAS, NEVADA ENGINEERING DEPT.			
BOUNDARY SURVEY OF A PORTION OF THE N.E. 1/4 SECTION 8, T21S, R.61E, M.D.B. & M. ANNEXED TO THE CITY OF LAS VEGAS, NEVADA, UNDER ORDINANCE NO. 813			
DRAWN BY: L.H.	CHK. BY: J.A.R.	APPROVED BY: R.P.S.	FIELD BOOK
DATE: 3-30-60	DATE: 3-30-60	DATE: 3-31-60	59-5X