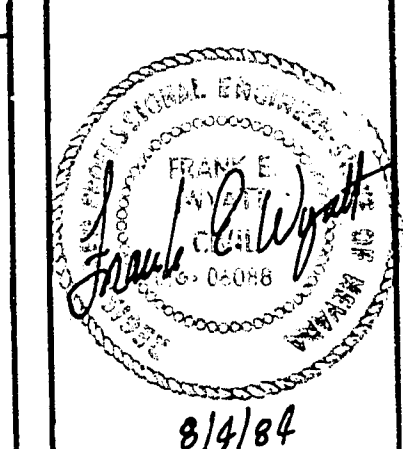
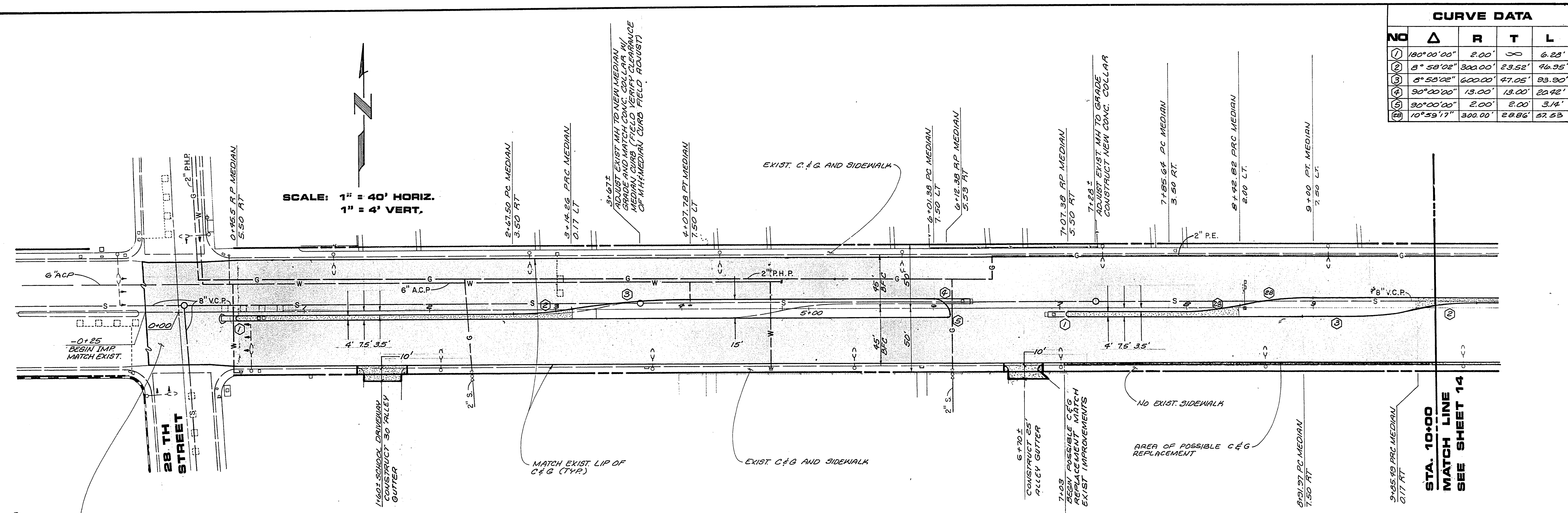


CURVE DATA				
NO	Δ	R	T	L
①	180°00'00"	2.00'	∞	6.28'
②	8°58'02"	300.00'	23.52'	46.95'
③	8°58'02"	600.00'	47.05'	93.90'
④	90°00'00"	13.00'	13.00'	20.42'
⑤	90°00'00"	2.00'	2.00'	3.14'
⑥	10°59'17"	300.00'	28.86'	57.53'

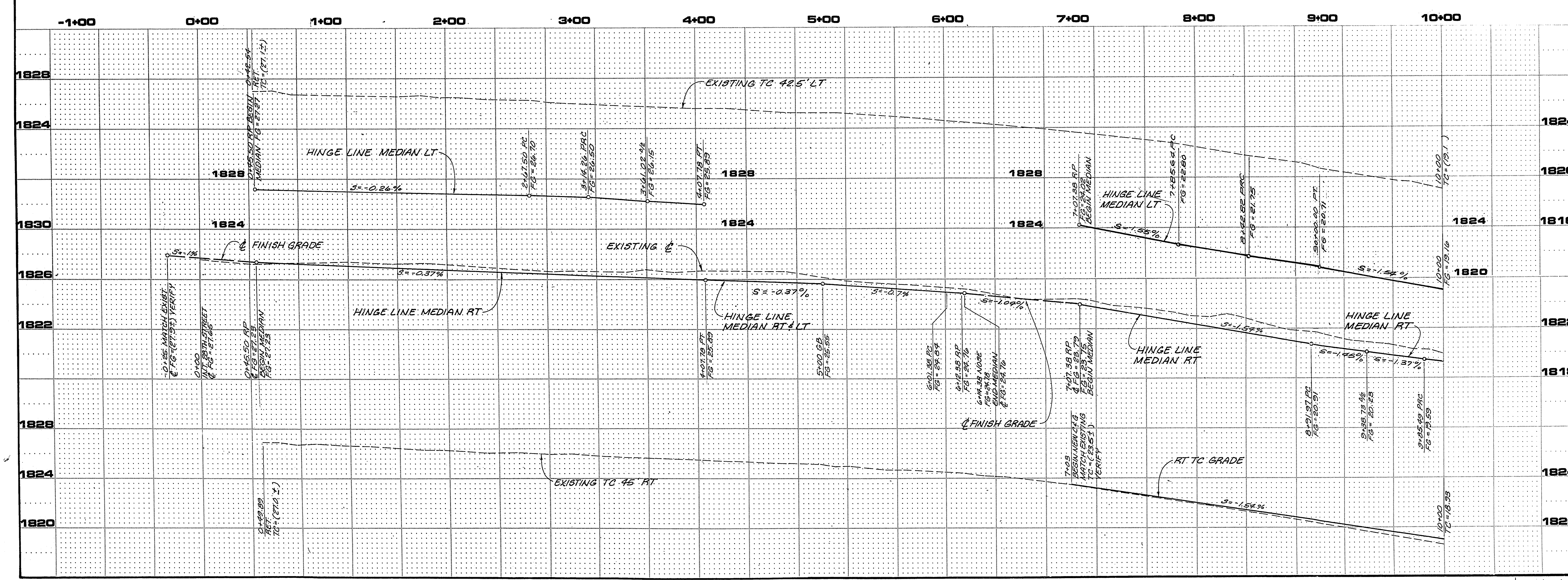
REVISIONS		
NO.	DESCRIPTION/DATE	BY



SPARKS, NEVADA
LAS VEGAS, NEVADA
SEATTLE, WASHINGTON
incorporated
SEA
ENGINEERS/PLANNERS



SEE 20' W. STREET ROAD SECTION DETAIL ON SHEET 5 FOR MATCH W/ EXISTING IMPROVEMENTS.



CITY OF LAS VEGAS
STEWART AVENUE
28TH STREET TO NELLIS BOULEVARD
RECONSTRUCTION PLAN & PROFILE
0+00 TO 10+00

JOB NO. 2-241-005-821	DESIGNED KA
DRAWN JR	COMP.
CHECKED	DATE FEBRUARY, 1984
SHEET NO.	13

14 OF 47 SHEETS

164-87 107-VB19C