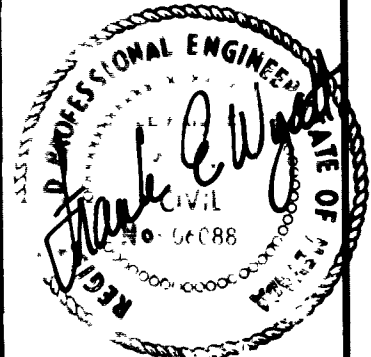


REVISIONS		
NO.	DESCRIPTION/DATE	BY



01/184

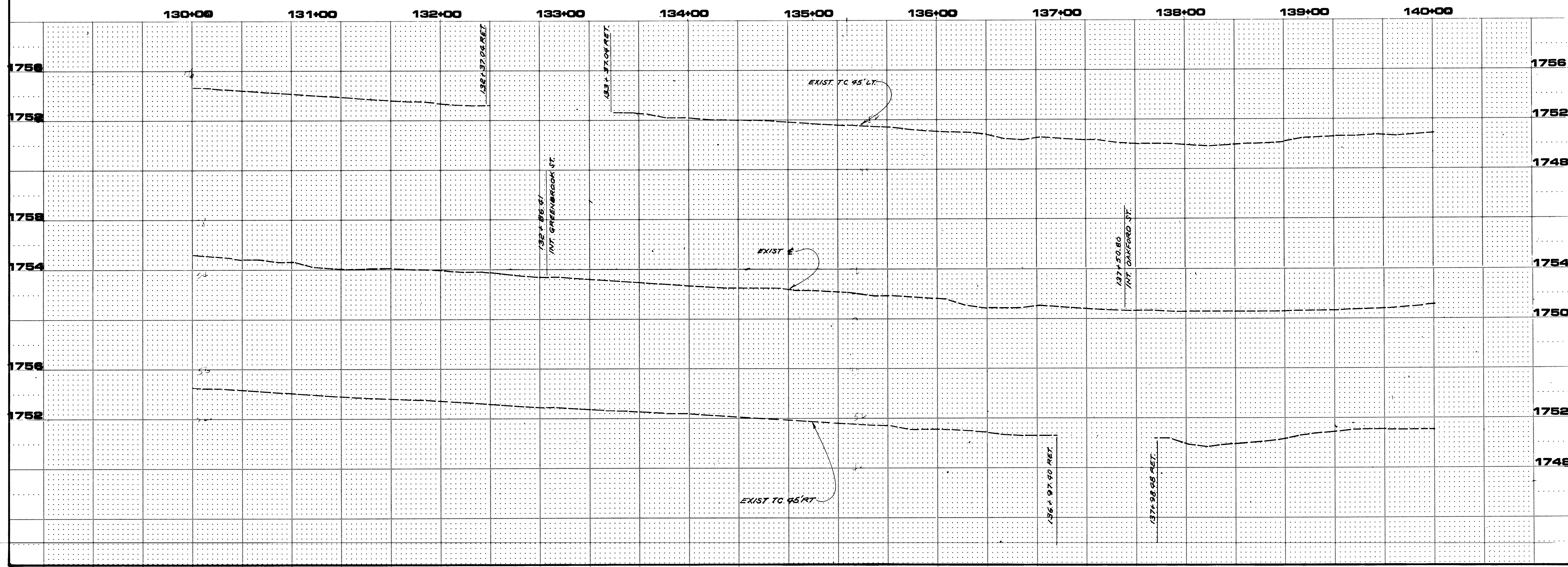
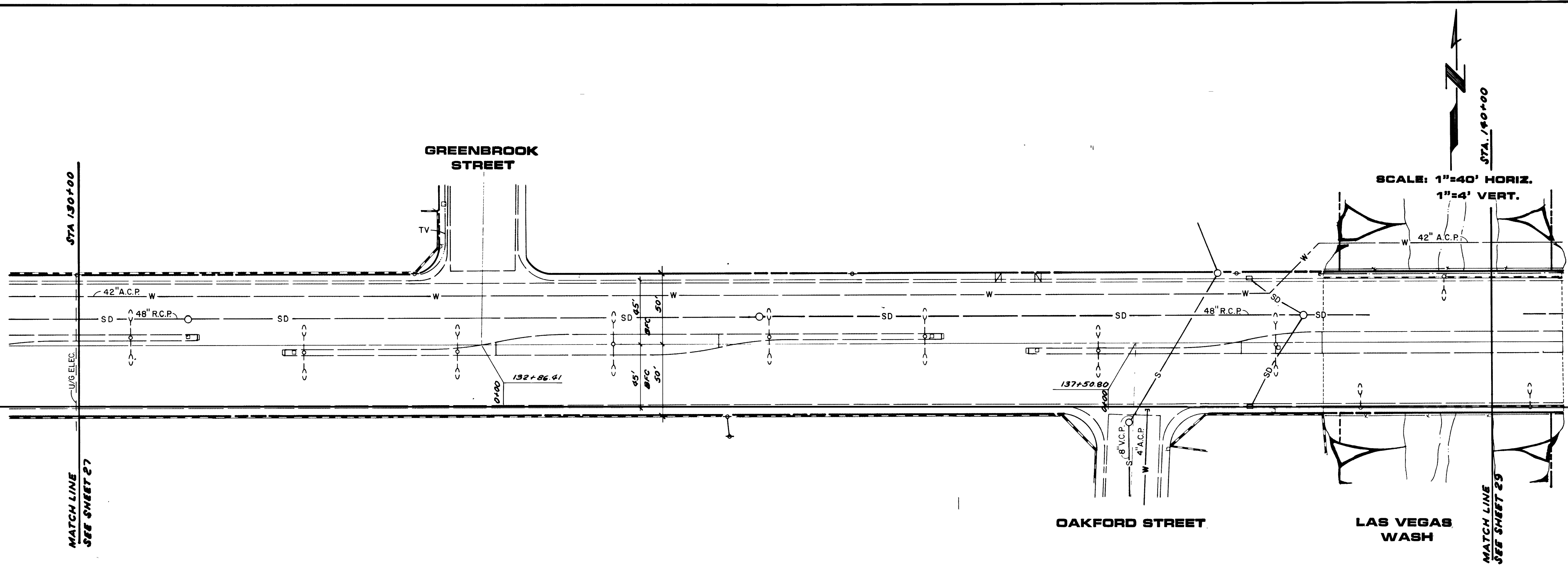
SPARKS, NEVADA  
 LAS VEGAS, NEVADA  
 SEATTLE, WASHINGTON  
 incorporated  
**SEA**  
 ENGINEERS/PLANNERS

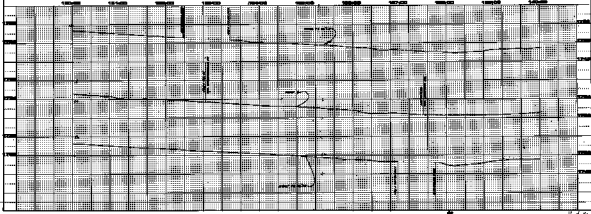
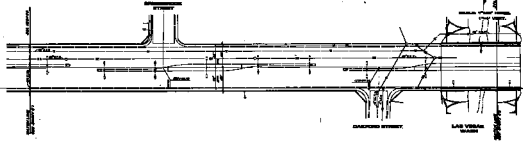
CITY OF LAS VEGAS  
**STEWART AVENUE**  
 28TH STREET TO NELLIS BOULEVARD  
**REPAIR PLAN & PROFILE**  
 130+00 TO 140+00

JOB NO. 2-241-005-821  
 DESIGNED KA  
 DRAWN ARC  
 COMP.  
 CHECKED  
 DATE FEBRUARY, 1984  
 SHEET NO.

**28**

28 OF 47 SHEETS  
 107-VB19C





**SP1**  
 SPECIAL INVESTIGATION  
 AND RECOMMENDATION  
 DIVISION

CITY OF LOS ANGELES  
 STEWART AVENUE  
 1001 STREET TO HOLLY HOLLINGS  
 REBART PLAN & PROFILE  
 JANUARY 19, 1940

