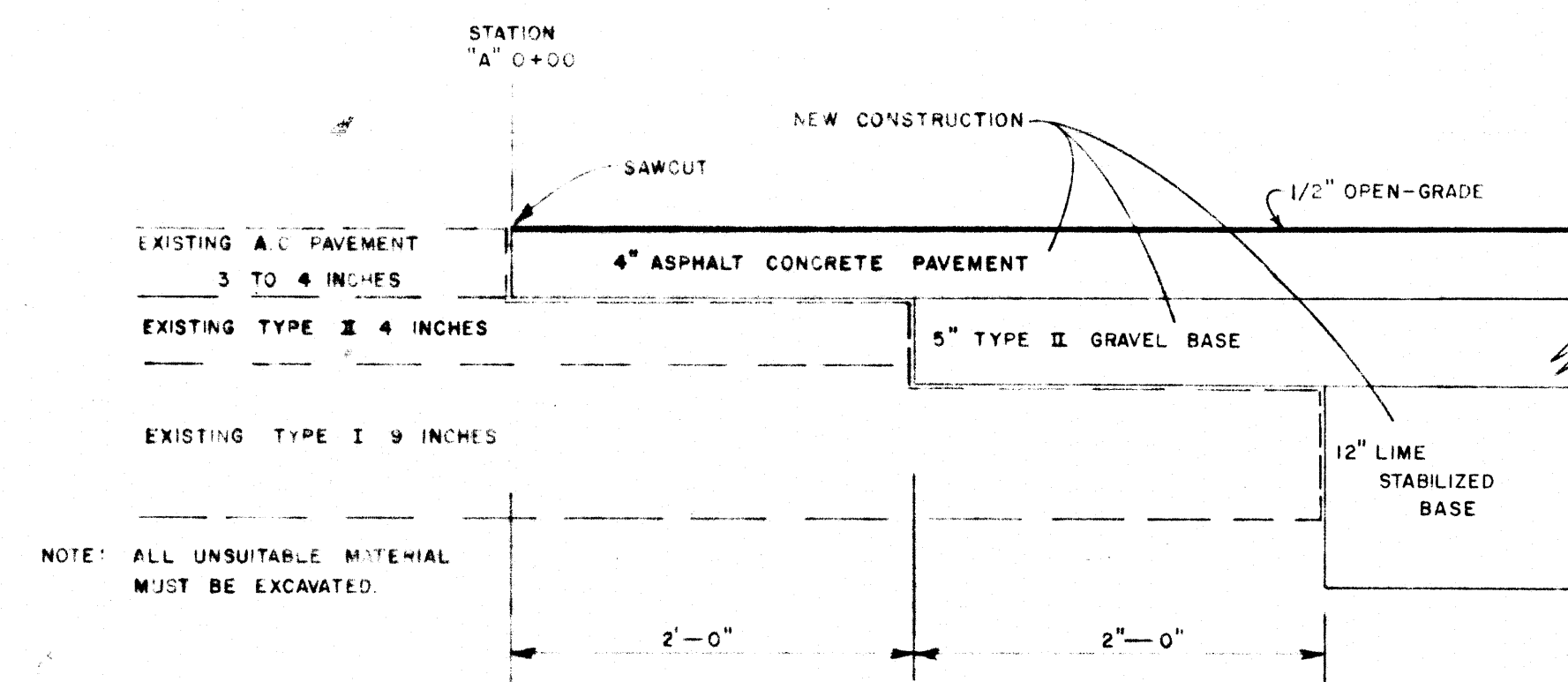


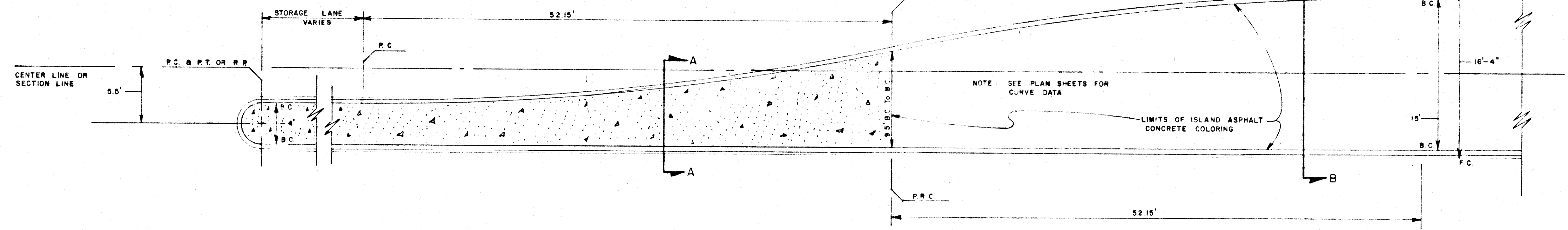
TYPICAL SECTION WITHOUT S.I.D.

SCALE: HORIZ. 1" = 60'
VERT. 1" = 10'

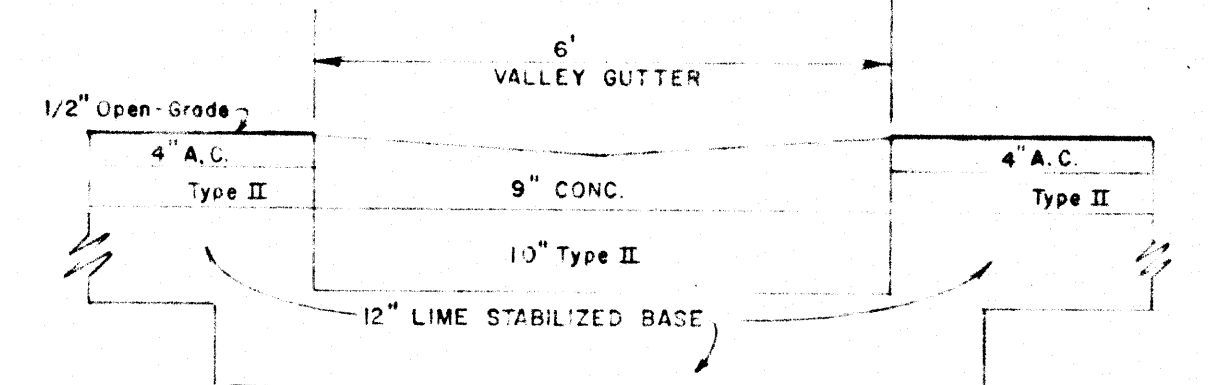


SPLICING DETAIL

STATION "A" 0+00
SCALE: VERT. 1" = 10'

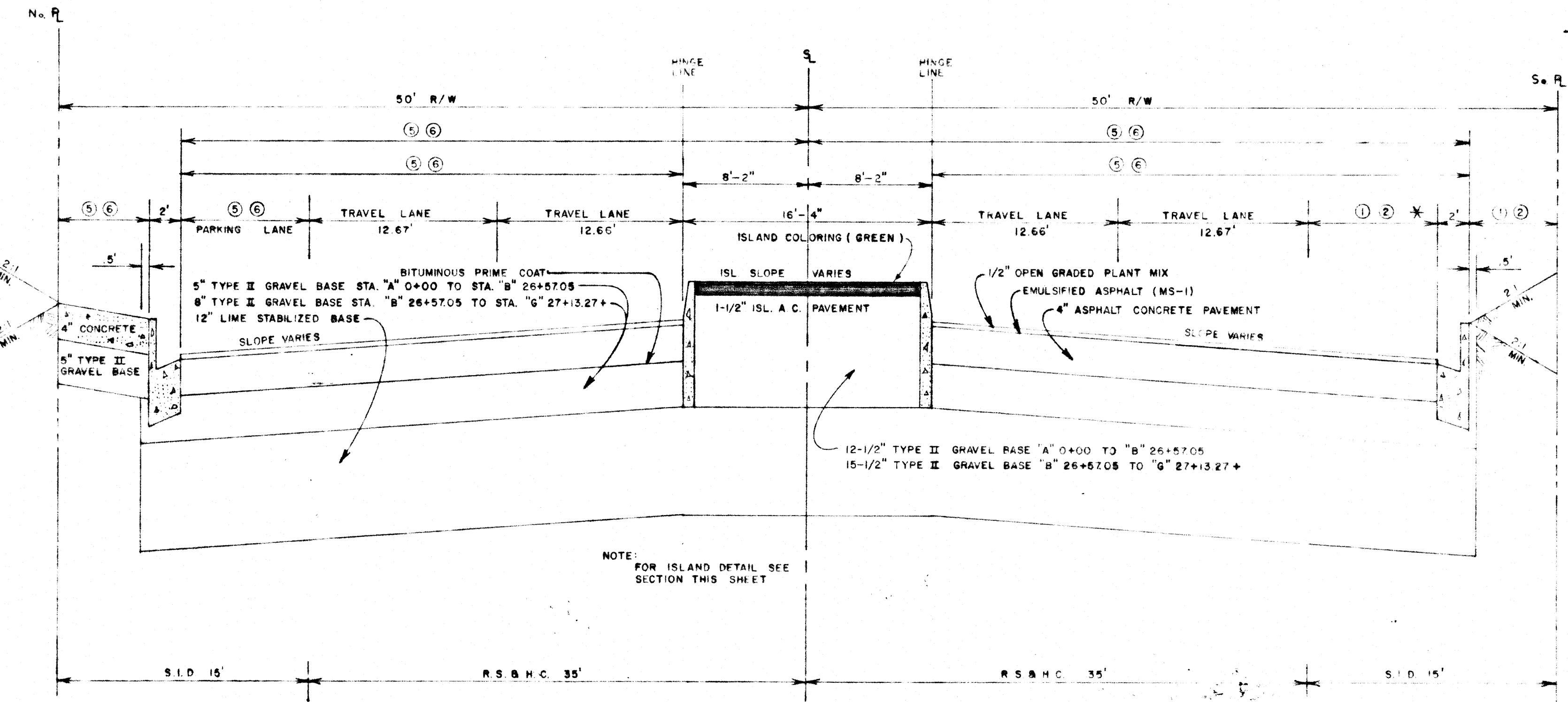


TYPICAL ISLAND DETAIL



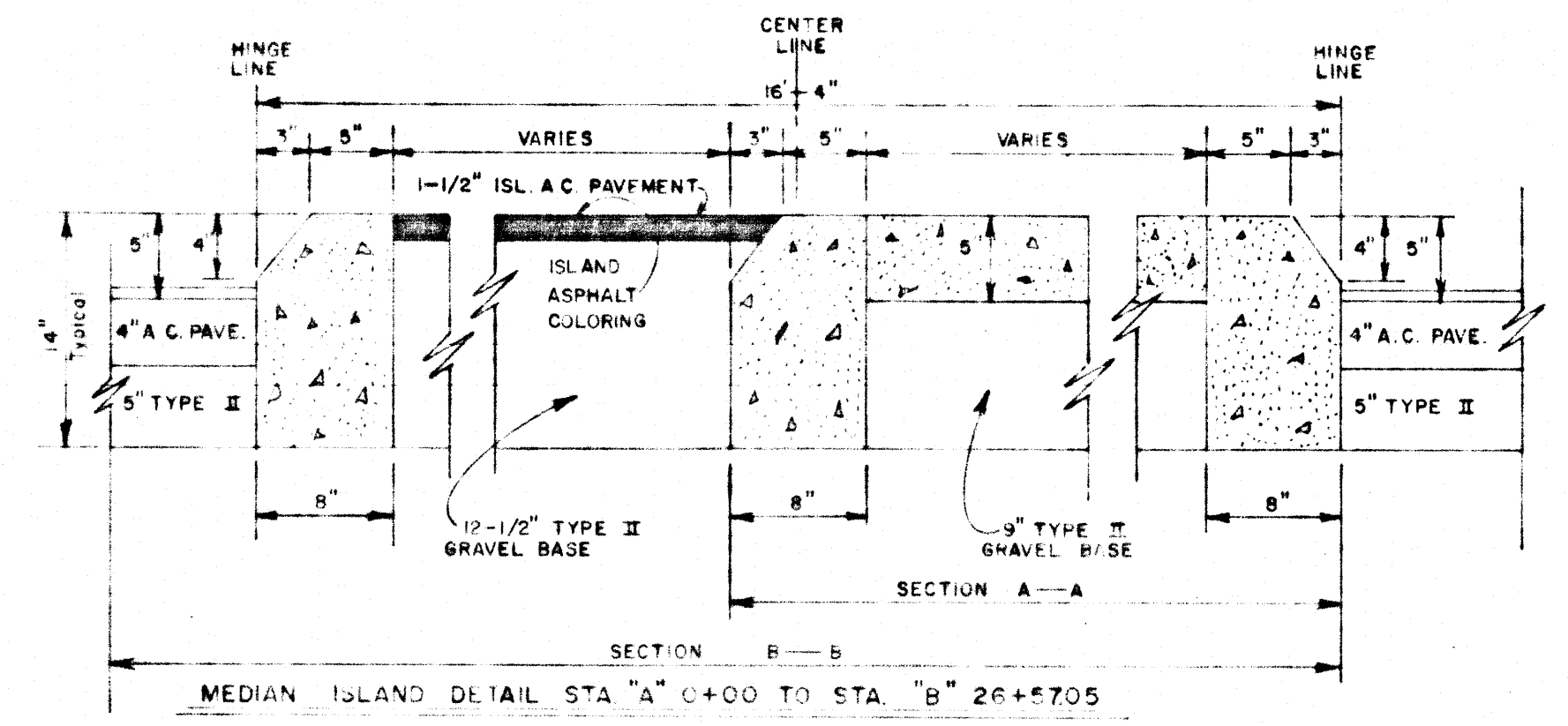
VALLEY GUTTER SECTION

SCALE: 1" = 2'-0"



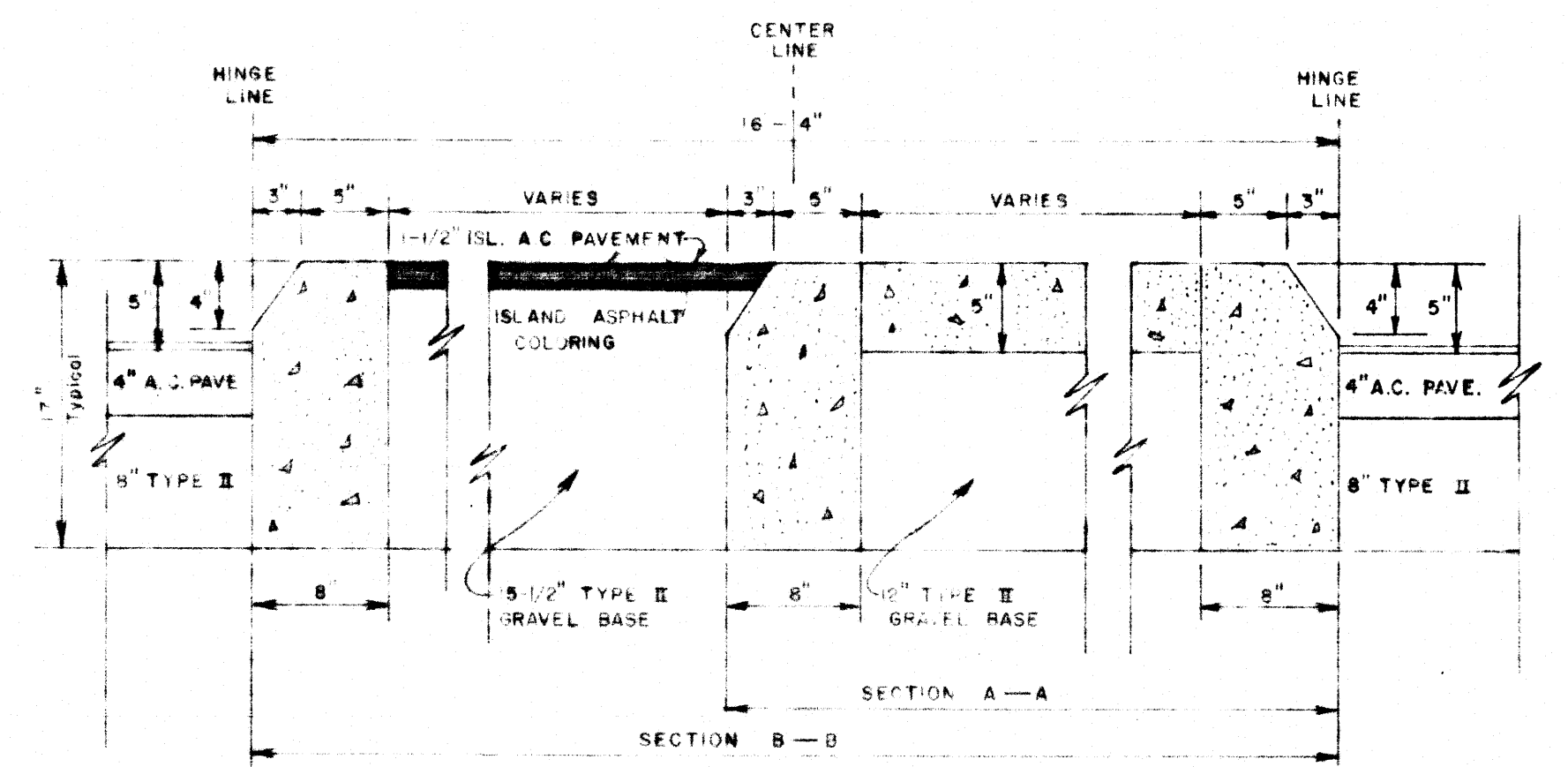
TYPICAL SECTION WITH S.I.D.

SCALE: HORIZ. 1" = 60'
VERT. 1" = 10'



MEDIAN ISLAND DETAIL STA. "A" 0+00 TO STA. "B" 26+5705

SCALE: 1" = 10'



MEDIAN ISLAND DETAIL STA. "B" 26+5705 TO STA. "G" 27+1327+

SCALE: 1" = 10'

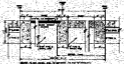
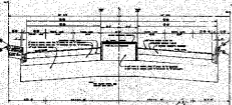
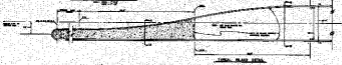
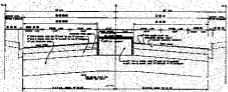
NO.	DISTANCE B.C. TO R/W	PARKING LANE WIDTH	DISTANCE E TO B.C.	DISTANCE E TO LIP	LOCATION STA TO STA
(1)	5'	9.5'	45'	35'	"A" 0+00 TO "B" 26+5705 "E" 0+00 TO "E" 25+79.63 "F" 13+55.38 TO "G" 27+1327+
(2)	6'	8.5'	44'	34'	"C" 0+00 TO "D" 12+89.75 "H" 0+00 TO "H" 2+00
(3)	5.6' TO 6'	8.5' TO 8.9'	44' TO 44.4'	34' TO 34.4'	"F" 0+00 TO "F" 13+83.38
(4)	7.5'	7'	42.5'	32.5'	"A" 0+00 TO "A" 13+9.52
(5)	5'	9.5'	45'	35'	"B" 0+00 TO "B" 26+5705 "E" 0+00 TO "E" 25+79.63 "E" 15+47.0 TO "G" 27+1327+
(6)	6'	8.5'	44'	34'	"C" 0+00 TO "D" 12+89.75 "H" 0+00 TO "H" 2+00
(7)	5'	9.4' TO 9.7'	44.5' TO 45.2'	34.5' TO 35.2'	"E" 7+7339 TO "E" 15+47.0

NOTE:
1. WHERE NEW CURB & GUTTER IS TO BE CONSTRUCTED USE 12" OF LIME STABILIZED BASE BELOW 5" OF TYPE II GRAVEL FROM STATION "A" 0+00 TO STATION "B" 26+5705 AND 8" OF TYPE II GRAVEL FROM STATION "B" 26+5705 TO STATION "G" 27+1327+.

2. IN AREAS WHERE EXISTING CURB, GUTTER, OR SIDEWALK IS TO BE REMOVED AND REPLACED, USE 8" OF TYPE I AND 4" OF TYPE II GRAVEL BASE UNDER THE CURB & GUTTER. USE 5" TYPE II GRAVEL BASE UNDER THE SIDEWALK.

CITY OF LAS VEGAS NEVADA
DEPARTMENT OF PUBLIC SERVICES
ENGINEERING DESIGN DIVISION
TYPICAL SECTIONS
STEWART AVE., 28th ST. TO NELLIS BLVD.

107-V819C
SHEET 21 OF 21



THE CITY OF LOS ANGELES
 DEPARTMENT OF PUBLIC WORKS
 WATER DIVISION

TYPICAL WATER METER RISER
 1/2" x 1/2"

NO.	DESCRIPTION	QTY.	UNIT	PRICE	TOTAL
1	Water Meter	1	EA.	10.00	10.00
2	Water Meter Body	1	EA.	5.00	5.00
3	Water Meter Housing	1	EA.	5.00	5.00
4	Water Meter Gasket	1	EA.	1.00	1.00
5	Water Meter Body Gasket	1	EA.	1.00	1.00
6	Water Meter Housing Gasket	1	EA.	1.00	1.00
7	Water Meter Body Gasket	1	EA.	1.00	1.00
8	Water Meter Housing Gasket	1	EA.	1.00	1.00
9	Water Meter Body Gasket	1	EA.	1.00	1.00
10	Water Meter Housing Gasket	1	EA.	1.00	1.00
11	Water Meter Body Gasket	1	EA.	1.00	1.00
12	Water Meter Housing Gasket	1	EA.	1.00	1.00
13	Water Meter Body Gasket	1	EA.	1.00	1.00
14	Water Meter Housing Gasket	1	EA.	1.00	1.00
15	Water Meter Body Gasket	1	EA.	1.00	1.00
16	Water Meter Housing Gasket	1	EA.	1.00	1.00
17	Water Meter Body Gasket	1	EA.	1.00	1.00
18	Water Meter Housing Gasket	1	EA.	1.00	1.00
19	Water Meter Body Gasket	1	EA.	1.00	1.00
20	Water Meter Housing Gasket	1	EA.	1.00	1.00

CITY OF LOS ANGELES
 DEPARTMENT OF PUBLIC WORKS
 WATER DIVISION
 STANDARD SPEC. FOR WATER METER RISER
 1/2" x 1/2"