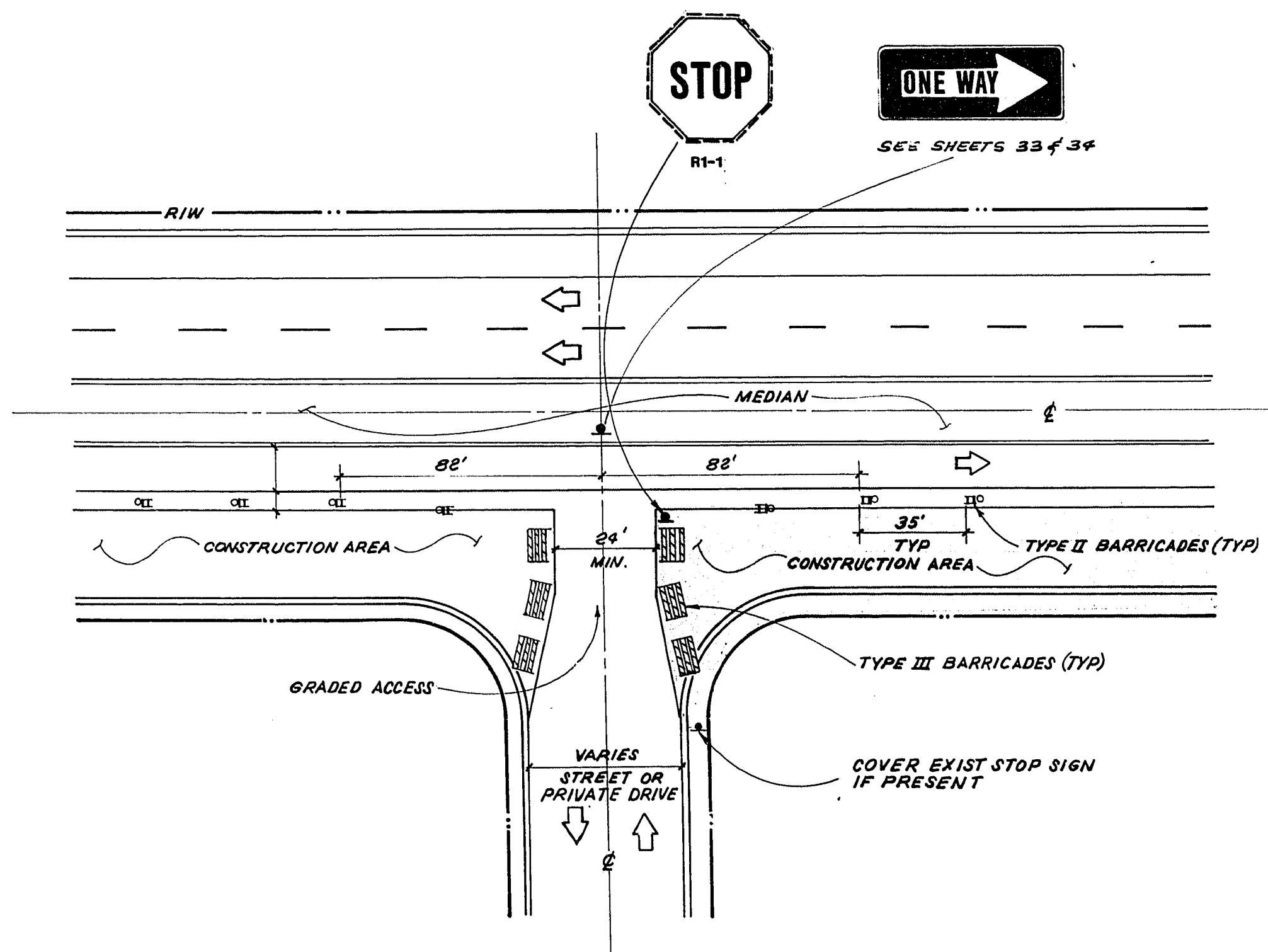


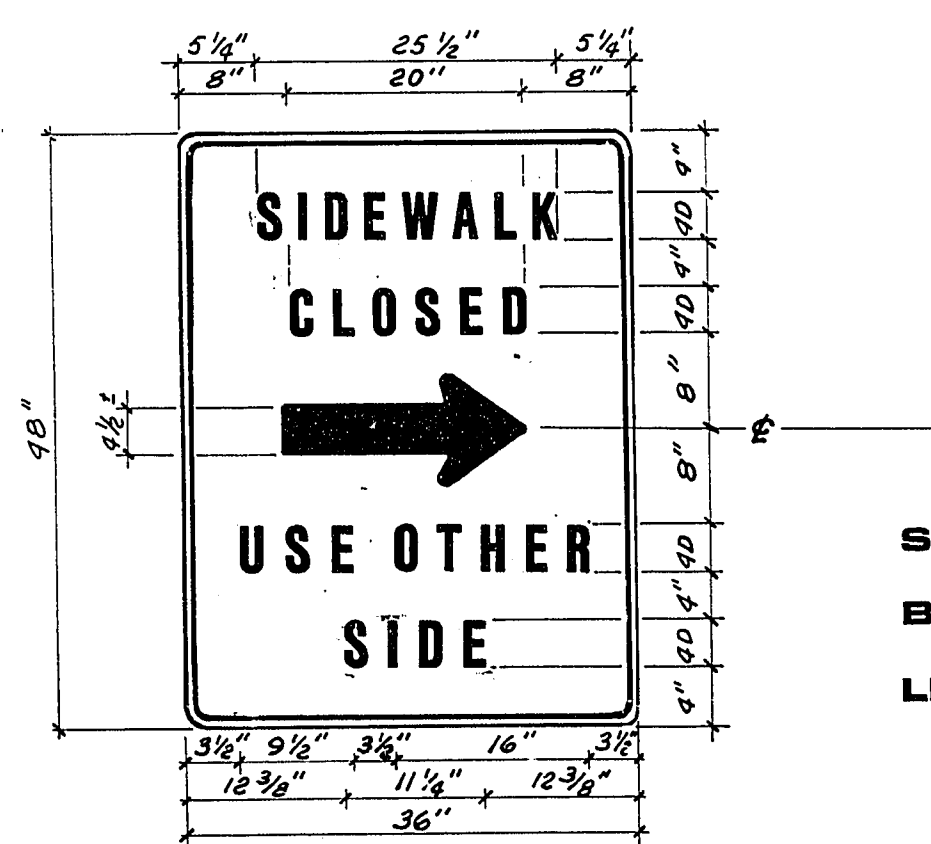
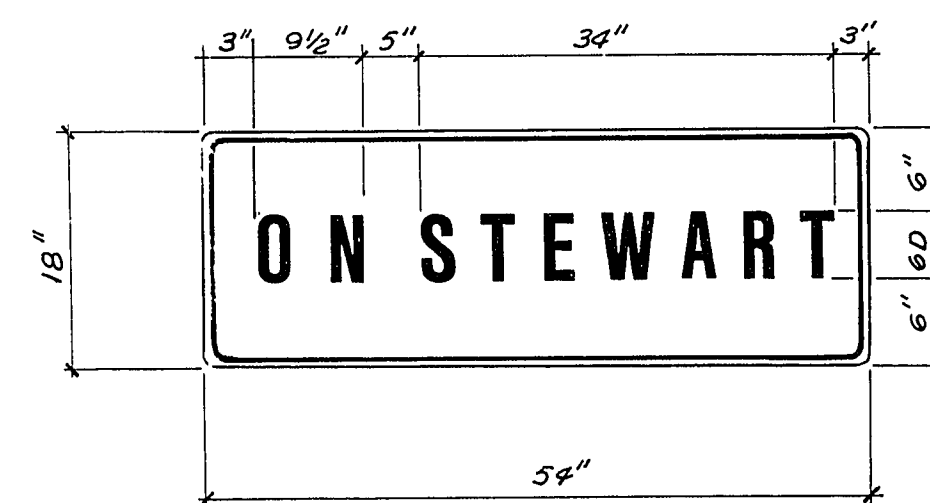
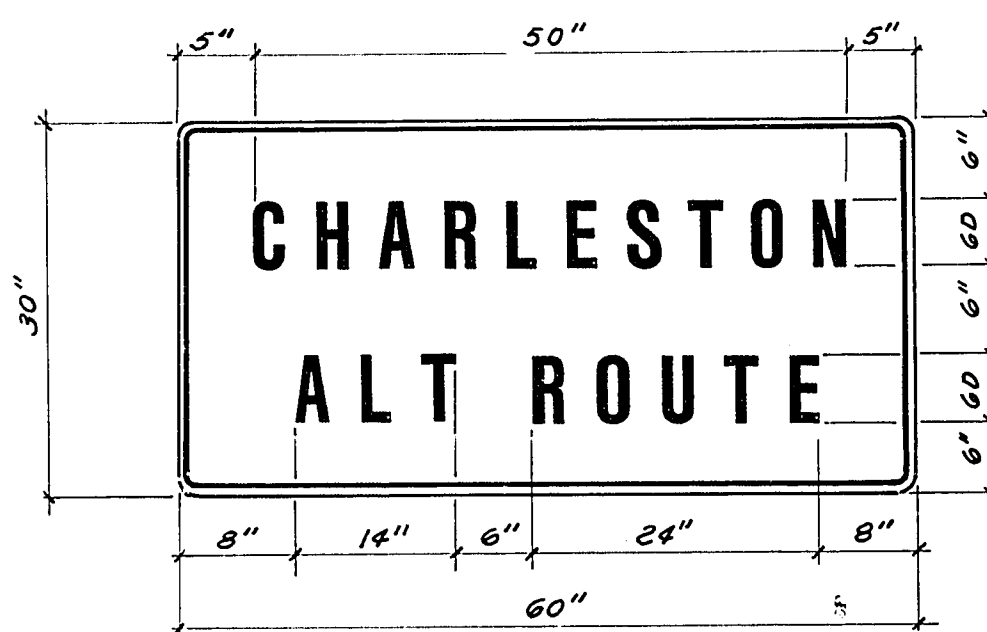
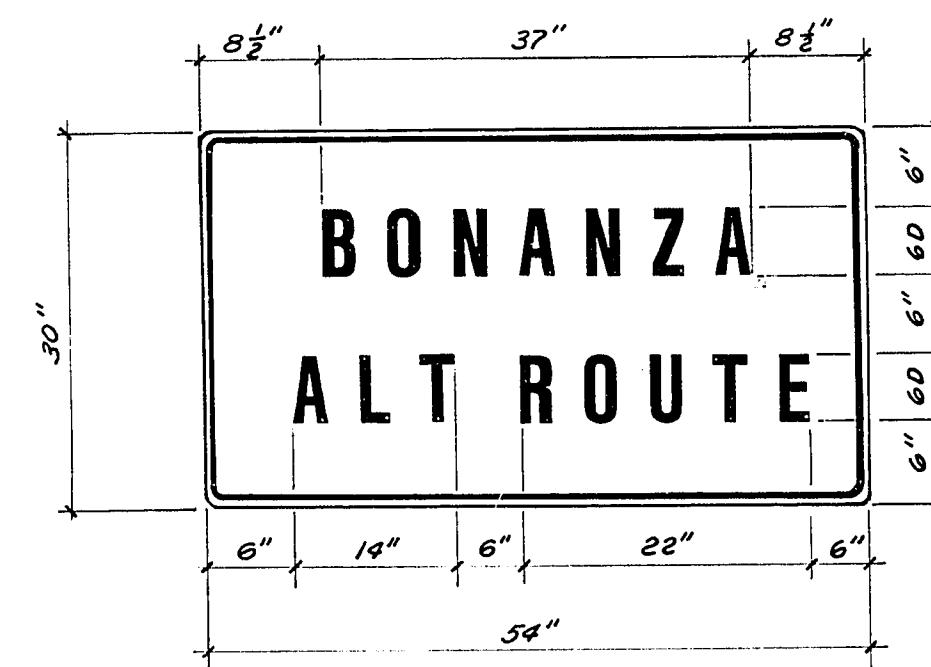
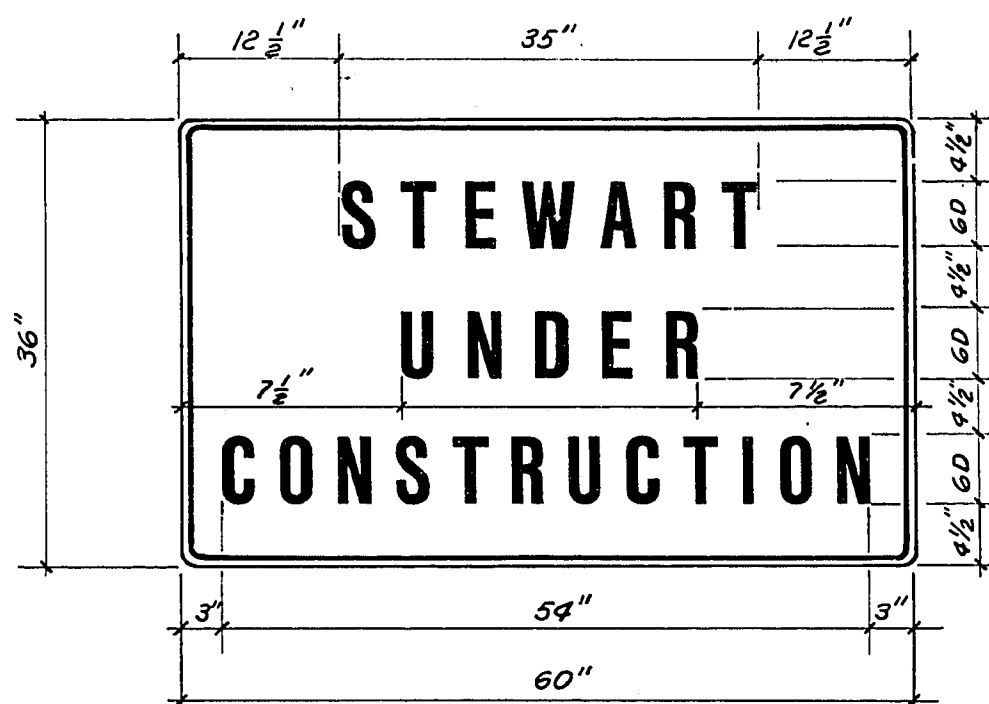
**TEMPORARY ACCESS
THRU CONSTRUCTION AREA
(28TH ST TO LAMB BLVD)**

NO SCALE



**TEMPORARY ACCESS
THRU CONSTRUCTION AREA
(LAMB BLVD TO NELLIS BLVD)**

NO SCALE



**SIGN LEGEND: BLACK
BACKGROUND: WHITE
LETTER SIZE: 40 OR 60**

TRAFFIC CONTROL PLAN NOTES:

- ALL SIGNS, MARKINGS, CHANNELIZING DEVICES, AND BARRICADES, SHALL CONFORM TO THE REQUIREMENTS OF THE MANUAL ON UNIFORM TRAFFIC CONTROL DEVICES (M.U.T.C.D.) 1978 EDITION, AND THE NEVADA TRAFFIC CONTROL MANUAL (1981).
- THE CONTRACTOR SHALL MAINTAIN THROUGH TRAFFIC THROUGHOUT THE LENGTH OF THE PROJECT AT ALL TIMES. IN ADDITION, THE CONTRACTOR SHALL MAINTAIN GRADED ACCESS POINTS TO THE BUSINESSES, RESIDENCES AND SIDE STREETS THROUGH THE CONSTRUCTION AREAS AT ALL TIMES.
- THE CONTRACTOR SHALL NOTIFY THE APPROPRIATE POLICE AND FIRE DEPARTMENTS OF ALTERED TRAFFIC PATTERNS DUE TO CONSTRUCTION AT LEAST 24 HOURS IN ADVANCE OF RE-ROUTING.
- FOR THE INTERSECTIONS OF 28TH STREET, MOJAVE ROAD, PECOS DRIVE, AND LAMB BOULEVARD, THE CONTRACTOR SHALL SUBMIT A TRAFFIC CONTROL PLAN SHOWING PROPOSED ROUTING OF TRAFFIC THROUGH THE INTERSECTIONS TO THE ENGINEER FOR APPROVAL AS PER SECTION 20 OF THE SPECIAL CONDITIONS. ALL CONSTRUCTION TRAFFIC ROUTING SHALL BE APPROVED BY THE ENGINEER.
- THE TAPER LENGTHS AND SPACING FOR CHANNELIZING DEVICES FOR TRAFFIC CONTROL SHALL BE AS FOLLOWS FOR THE 12' LANES:

MILES PER HOUR	TAPER LENGTH	SPACING
20 MPH OR LESS	80'	20'
25 MPH	125'	25'
30 MPH	180'	30'
35 MPH	245'	35'
40 MPH	320'	40'
45 MPH	540'	45'

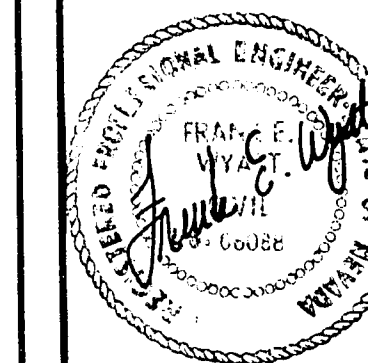
- ALL SELF SUPPORTING CONSTRUCTION SIGNS SHALL HAVE A MINIMUM MOUNTING HEIGHT AS SHOWN IN THESE PLANS.
- ALL SIGNS INTENDED TO BE USED DURING HOURS OF DARKNESS SHALL BE REFLECTIONIZED OR ILLUMINATED.
- THE TRAFFIC CONTROL PLAN SHOWN ON SHEETS 42 THROUGH 46 REPRESENTS A GENERAL CONSTRUCTION SIGNING AND BARRICADE PLAN AS REQUIRED FOR THE PROJECT. THE CONTRACTOR SHALL BE RESPONSIBLE FOR ANY ADDITIONAL SIGNS, BARRICADES, MARKINGS, CHANNELIZING DEVICES AND FLAGMEN AS NECESSARY OR AS DIRECTED BY THE ENGINEER, TO PROTECT THE WORKSITE AND THE PUBLIC TRAVEL WAY.
- ACCESS TO SIDE STREETS MAY BE REDUCED TO ONE LANE OPERATION WITH PROPER USE OF FLAGMEN DURING PERIODS WHEN BASE AND/OR PAVING IS BEING PLACED IN THESE AREAS.
- ACCESS TO DRIVEWAYS MAY BE TEMPORARILY DENIED DUE TO CONSTRUCTION OPERATIONS ONLY WHEN THE CONTRACTOR HAS NOTIFIED THE AFFECTED PARTIES OF THE CLOSURE AT LEAST 24 HOURS IN ADVANCE.
- THE LOCATION OF ALL CONSTRUCTION SIGNS AND BARRICADES ARE APPROXIMATE ONLY. EXACT LOCATION TO BE DETERMINED IN THE FIELD BY THE ENGINEER.
- ONLY TYPE III BARRICADES SHALL BE USED FOR THE PURPOSE OF PREVENTING TRAFFIC FROM ENTERING A CONSTRUCTION AREA.
- THE CONTRACTOR SHALL MAINTAIN ALL CONSTRUCTION SIGNS AND BARRICADES DURING THE LIFE OF THE CONSTRUCTION ZONE.

LEGEND:

- CHANNELIZING DEVICE
- TYPE III BARRICADES
- TYPE II BARRICADES
- TEMPORARY STRIPING
- CONSTRUCTION SIGN (SELF SUPPORTING)
- CONSTRUCTION SIGN (MOUNTED ON BARRICADE)
- TRAFFIC FLOW
- CONSTRUCTION AREA
- EXISTING TRAFFIC SIGN
- PROJECT SIGN

REVISIONS

NO.	DESCRIPTION/DATE	BY



CITY OF LAS VEGAS
STEWART AVENUE
 28TH STREET TO NELLIS BOULEVARD
TRAFFIC CONTROL PLAN DETAILS

SPARIS, NEVADA
 LAS VEGAS, NEVADA
 SEATTLE, WASHINGTON
 ENGINEERS/PLANNERS

JOB NO. 2-241-005-821
DESIGNED KA
DRAWN AC
COMP.
CHECKED
DATE FEBRUARY, 1984

11-1-87 107-V8190