

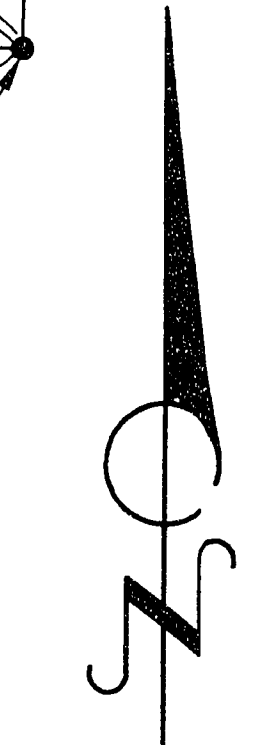
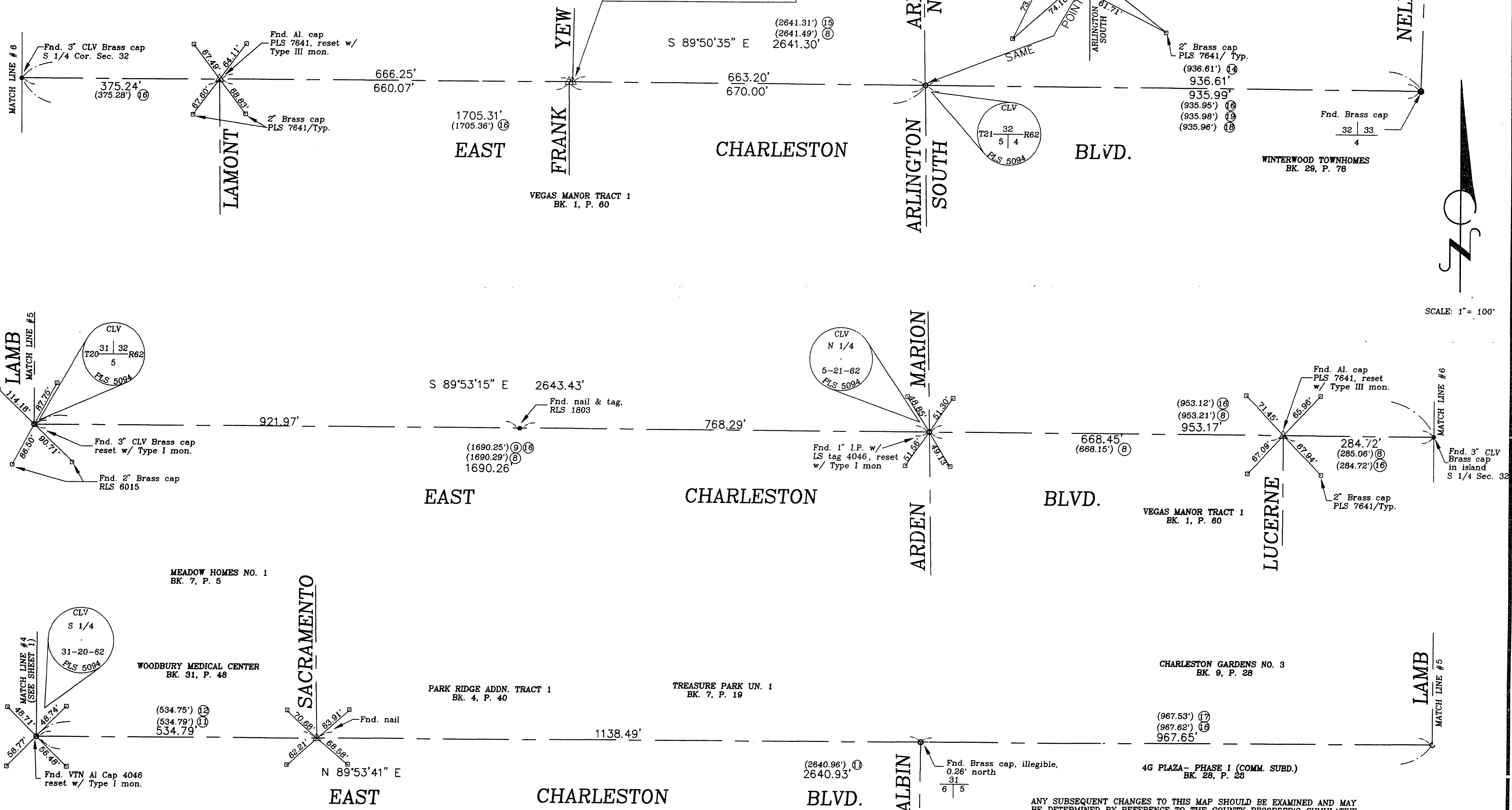
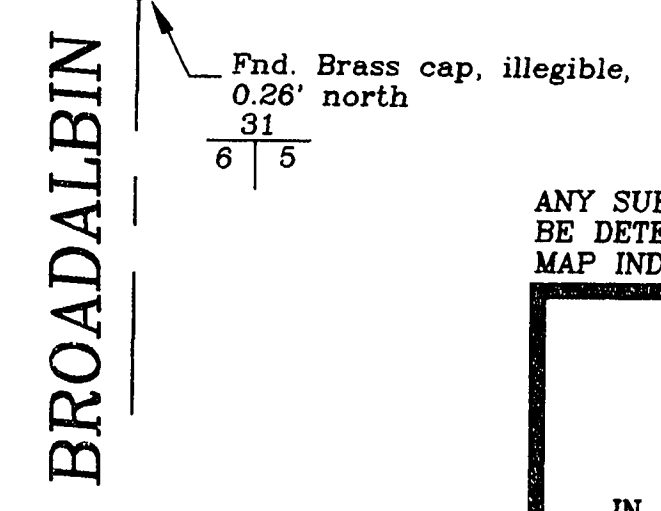
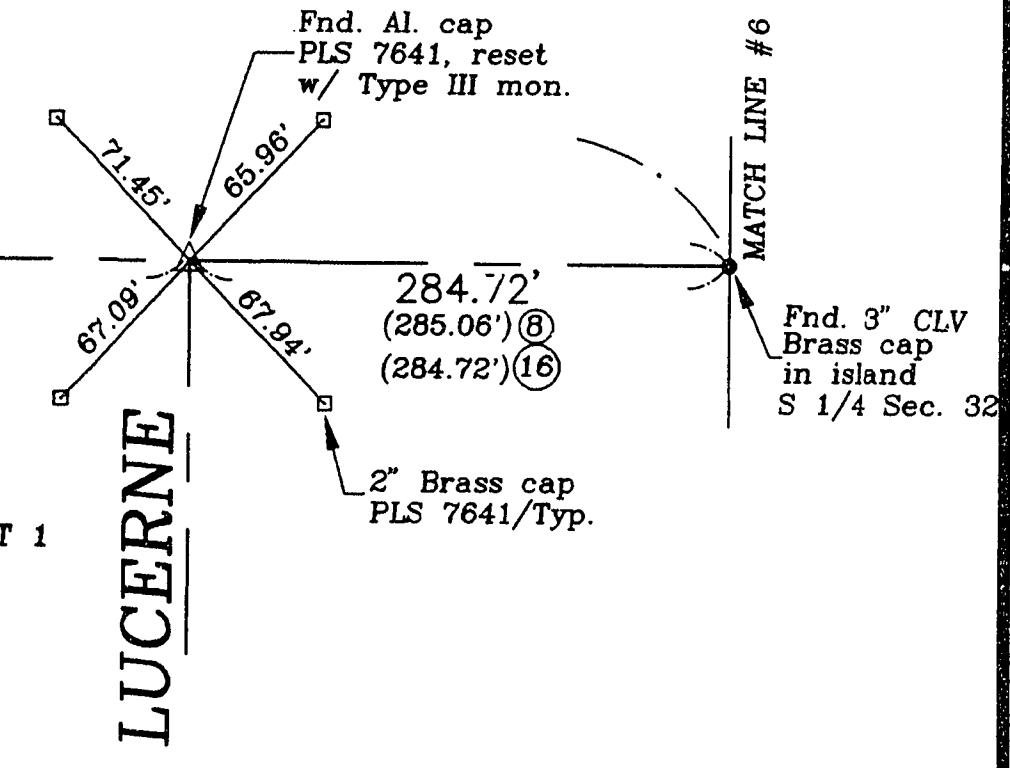
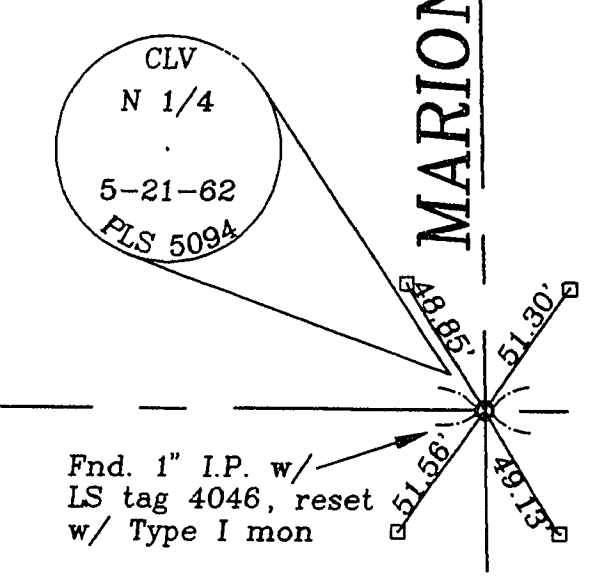
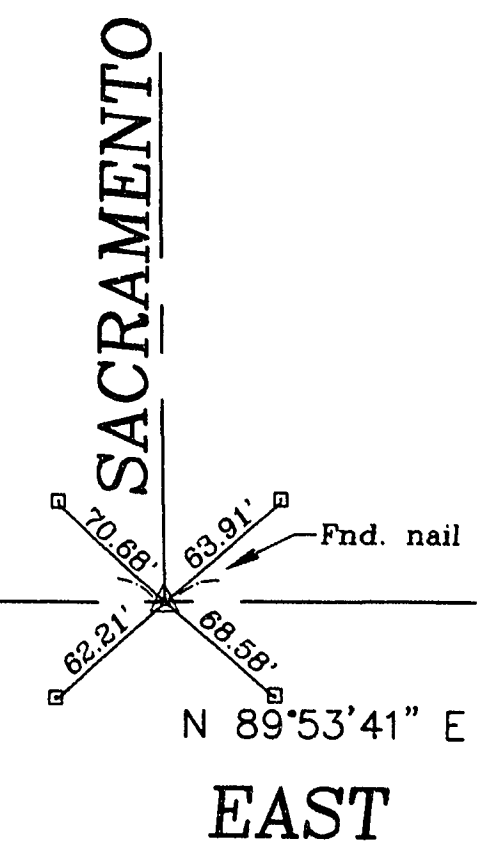
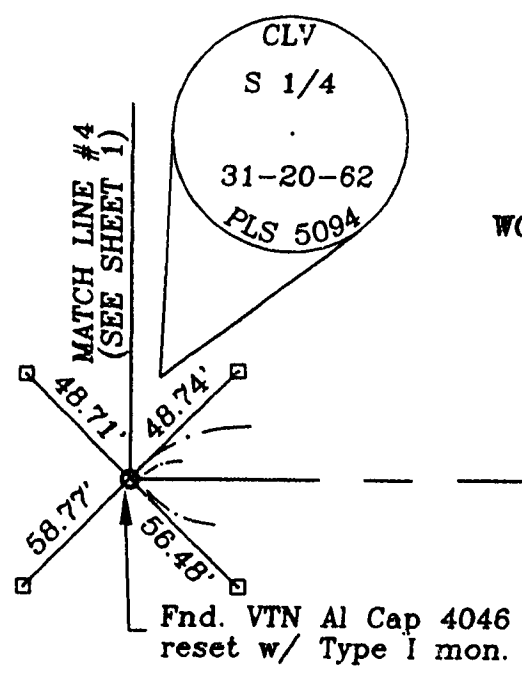
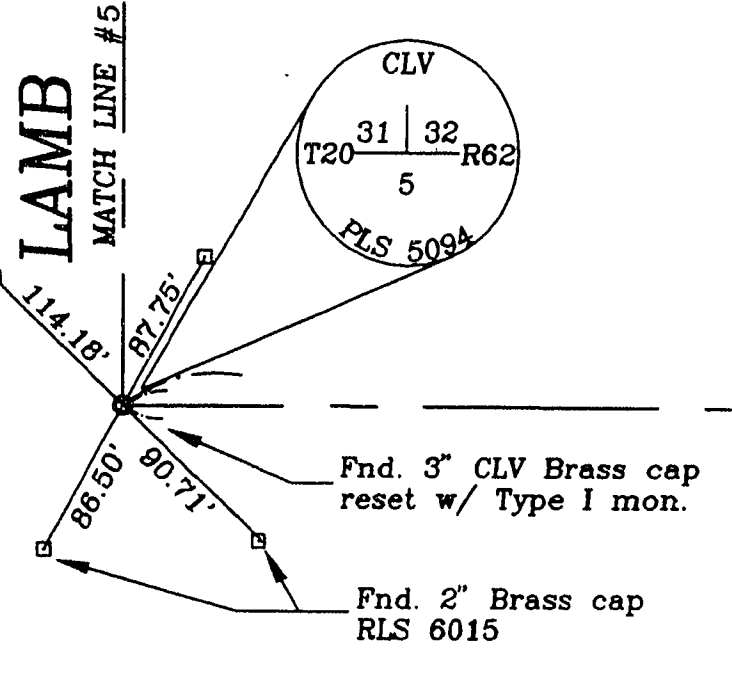
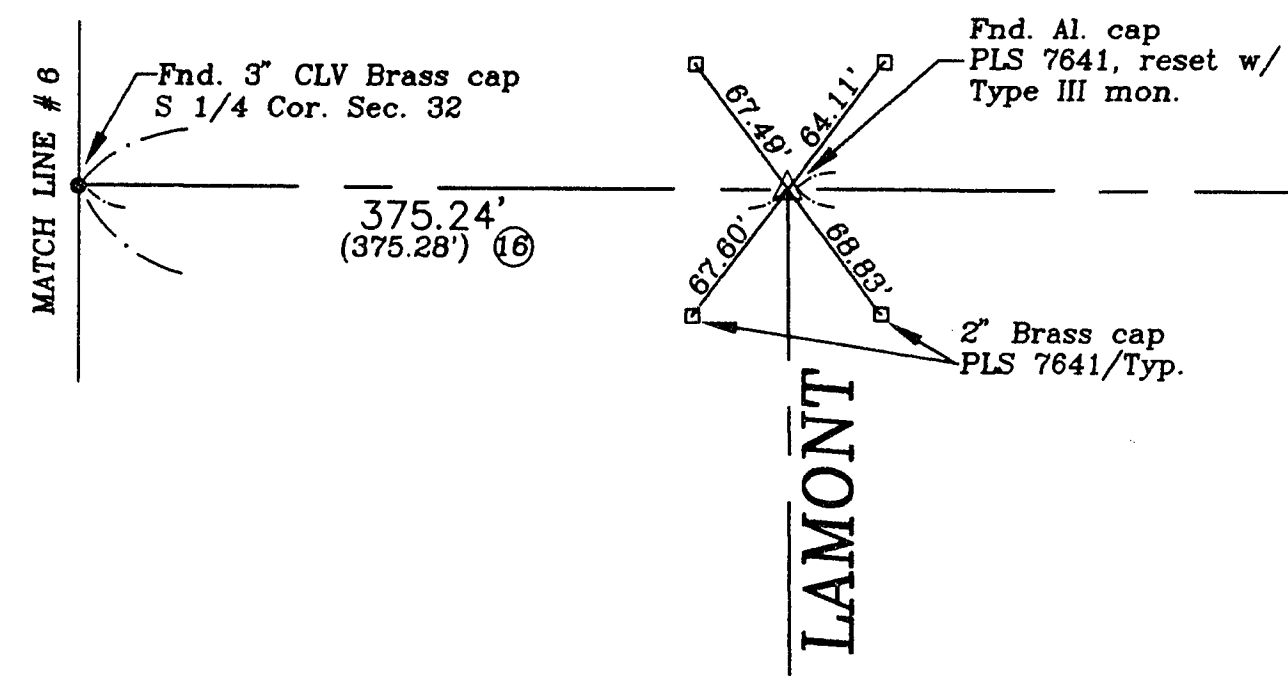
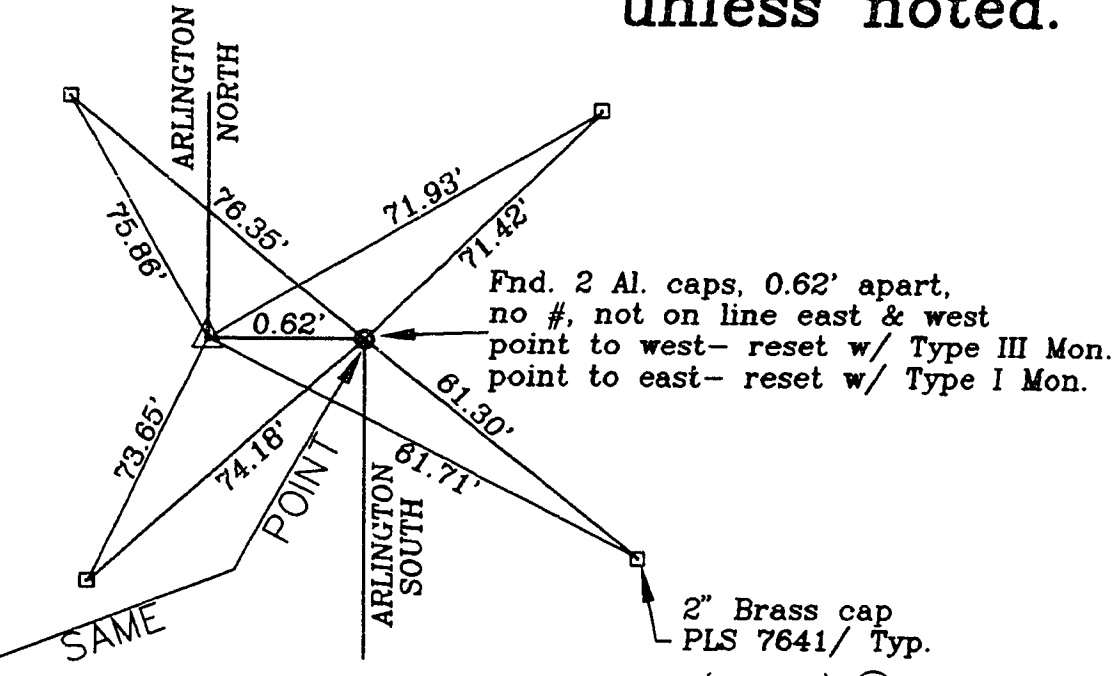
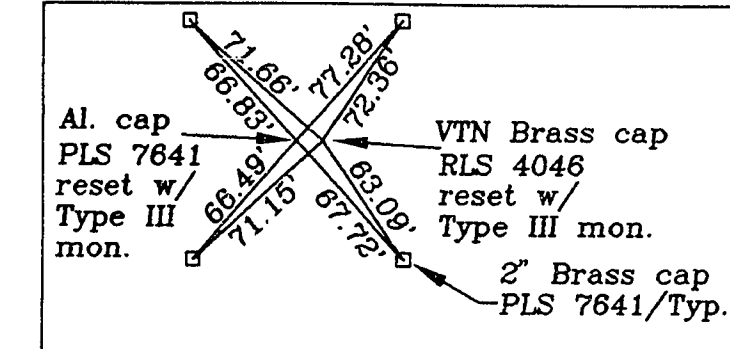
930513

01024

NOTE: All reference monuments are 1-3/8" Brass caps in top of curb unless noted.

PINEWOOD UN. 3 BK. 23, P. 22

PINEWOOD UNIT 2 BK. 21, P. 13



SCALE: 1" = 100'

14-13

ANY SUBSEQUENT CHANGES TO THIS MAP SHOULD BE EXAMINED AND MAY BE DETERMINED BY REFERENCE TO THE COUNTY RECORDER'S CUMULATIVE MAP INDEX. (NRS 278.5695)

SHEET 2 OF 2

**RECORD OF SURVEY**  
 OF  
**EAST CHARLESTON BLVD.**  
 BETWEEN 25TH STREET AND NELLIS BLVD.  
 IN SECTION 36, T20S, R61E; SECTIONS 31 & 32, T20S, R62E;  
 SECTION 1, T21S, R61E; SECTIONS 5 & 6, T21S, R62E;  
 CLARK COUNTY M.D.M. NEVADA

DRAWN BY:	ME
CHECKED BY:	
DATE:	APRIL 1993

FILE 66 PAGE 52 055-635