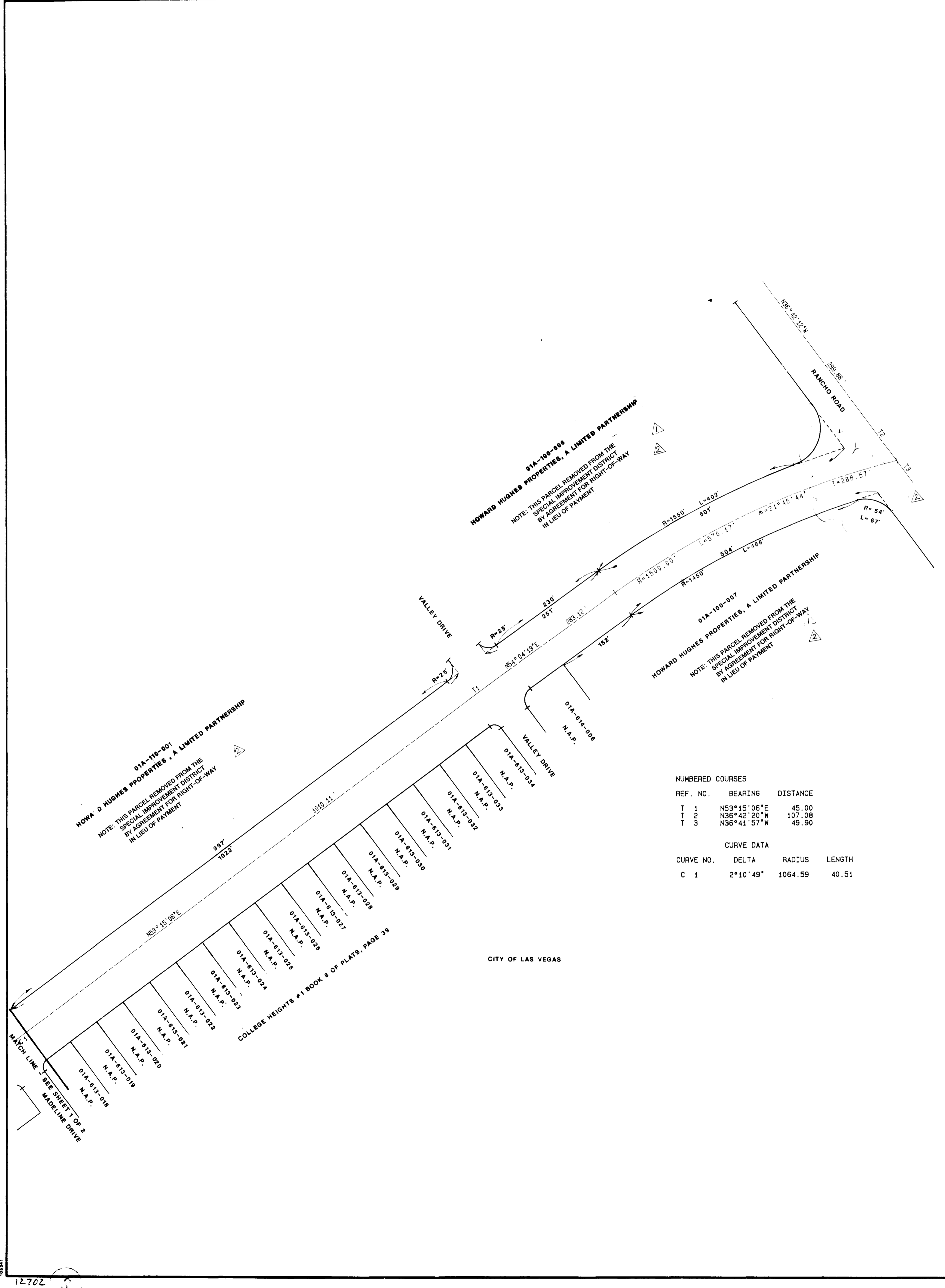
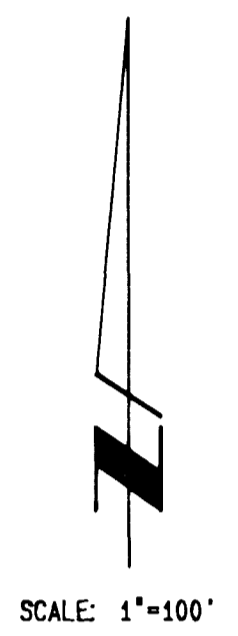


REVISIONS			
NO.	DESCRIPTION/DATE	BY	
1	3 90	JF	
2	26 90	JF	

ASSESSMENT UNITS	
(1)	PAVEMENT SECTION
(2)	CURB AND GUTTER 'L' TYPE
(3)	SIDEWALK 5 FEET WIDE
(4)	DRIVEWAYS
(5)	STREET LIGHTS
(6)	SEWER LATERALS
(7)	WATER LATERALS
(8)	WATER MAIN

LEGEND	
N.A.P.	NOT A PART
02A-200-002	TAX PARCEL NUMBER
105 LF AF	ASSESSABLE FOOTAGE
(1) (2) (3) (4) (5) (6)	ASSESSABLE UNITS (No.)
(6)	ASSESSABLE UNIT (No.)
/1	NUMBER OF LATERALS
/8"	SIZE OF LATERAL(S)
30 LF	LENGTH OF LATERAL(S)



NUMBERED COURSES			
REF. NO.	BEARING	DISTANCE	
T 1	N53°15'06"E	45.00	
T 2	N36°42'20"W	107.08	
T 3	N36°41'57"W	49.90	

CURVE DATA			
CURVE NO.	DELTA	RADIUS	LENGTH
C 1	2°10'49"	1064.59	40.51

SPARKS, NEVADA
LAS VEGAS, NEVADA
INCORPORATED
SCA
ENGINEERS/PLANNERS

CITY OF LAS VEGAS
LAKE MEAD BOULEVARD
WINWOOD STREET TO RANCHO ROAD
SPECIAL IMPROVEMENT DISTRICT NO. 492

JOB NO.	2-241-01-4
DESIGNED	
DRAWN	BB
COMP	NP
CHECKED	RML
DATE	MAY, 1989

