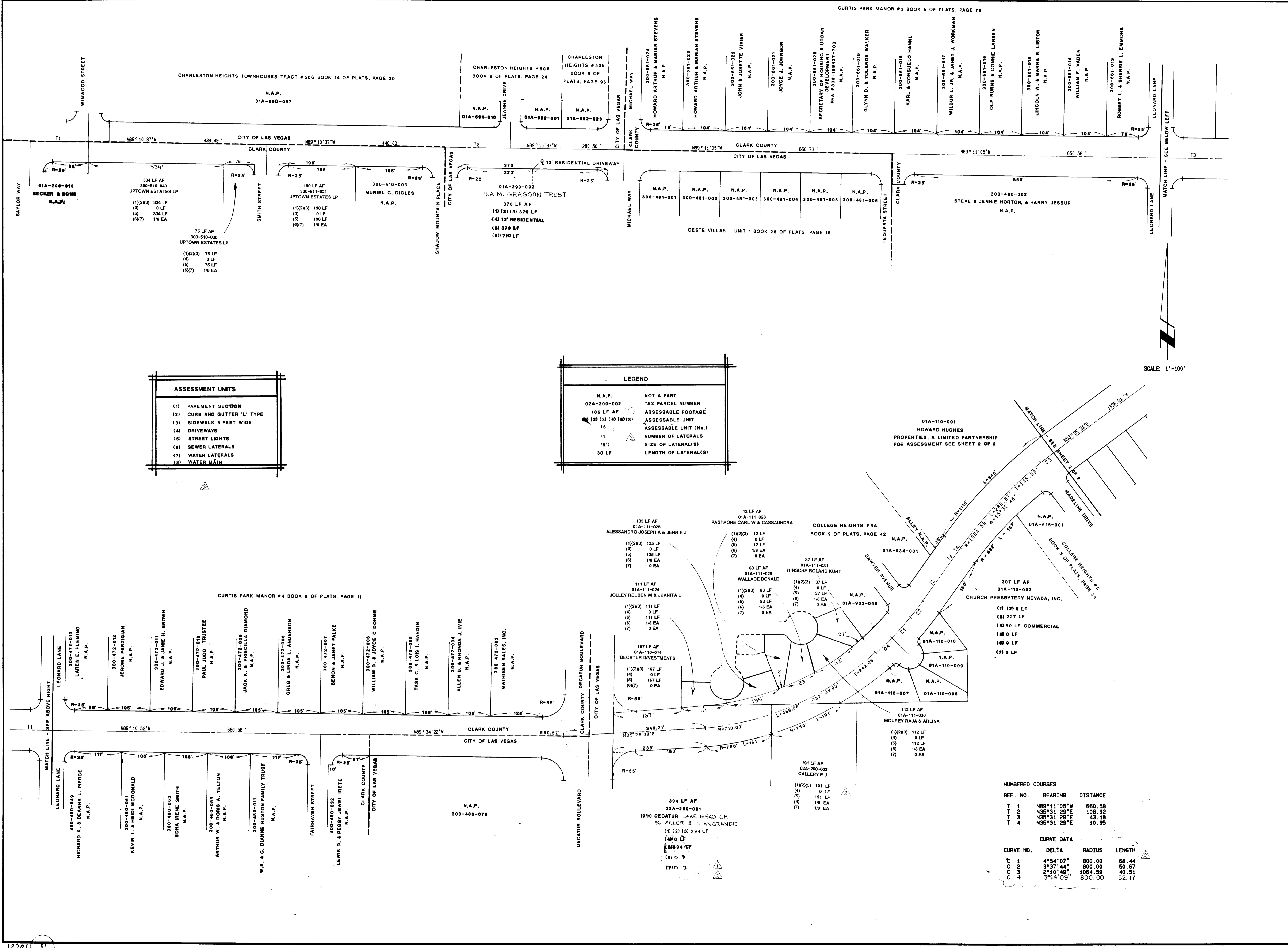


NO.	DESCRIPTION/DATE	BY
1	3.90	JH
2	2.26.90	JH
	5/15/90	JH



ASSESSMENT UNITS	
(1)	PAVEMENT SECTION
(2)	CURB AND GUTTER "L" TYPE
(3)	SIDEWALK 5 FEET WIDE
(4)	DRIVEWAYS
(5)	STREET LIGHTS
(6)	SEWER LATERALS
(7)	WATER LATERALS
(8)	WATER MAIN

LEGEND	
N.A.P.	NOT A PART
02A-200-002	TAX PARCEL NUMBER
105 LF AF	ASSESSABLE FOOTAGE
(1) (2) (3) (4) (5) (6)	ASSESSABLE UNIT
(6)	ASSESSABLE UNIT (No.)
(7)	NUMBER OF LATERALS
(8)	SIZE OF LATERAL(S)
30 LF	LENGTH OF LATERAL(S)

NUMBERED COURSES		
REF. NO.	BEARING	DISTANCE
T 1	N89°11'05"W	660.58
T 2	N35°31'29"E	106.52
T 3	N35°31'29"E	43.18
T 4	N35°31'29"E	10.95

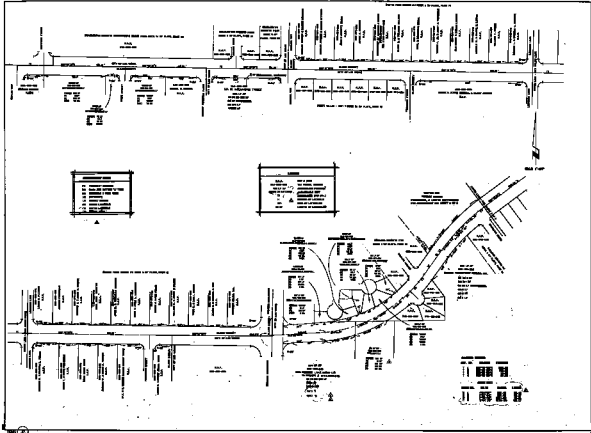
CURVE DATA			
CURVE NO.	DELTA	RADIUS	LENGTH
C 1	4°54'07"	800.00	68.44
C 2	3°37'44"	800.00	50.67
C 3	2°40'48"	1064.58	40.51
C 4	3°44'09"	800.00	52.17

SPARKS, NEVADA
LAS VEGAS, NEVADA

incorporated
SEA
ENGINEERS/PLANNERS

CITY OF LAS VEGAS
LAKE MEAD BOULEVARD
WINWOOD STREET TO RANCHO ROAD
SPECIAL IMPROVEMENT DISTRICT NO. 492

JOB NO.	2-241-01-4
DESIGNED	BB
DRAWN	BB
COMP.	NP
CHECKED	RML
DATE	MAY, 1989



1
 2
 3
 4
 5
 6
 7
 8
 9
 10
 11
 12
 13
 14
 15
 16
 17
 18
 19
 20
 21
 22
 23
 24
 25
 26
 27
 28
 29
 30
 31
 32
 33
 34
 35
 36
 37
 38
 39
 40
 41
 42
 43
 44
 45
 46
 47
 48
 49
 50
 51
 52
 53
 54
 55
 56
 57
 58
 59
 60
 61
 62
 63
 64
 65
 66
 67
 68
 69
 70
 71
 72
 73
 74
 75
 76
 77
 78
 79
 80
 81
 82
 83
 84
 85
 86
 87
 88
 89
 90
 91
 92
 93
 94
 95
 96
 97
 98
 99
 100



CITY OF LOS ANGELES
 LAUREL HEAD BOUNDARY
 WINDSOR STREET TO DEWEEZ ROAD
 SPECIAL IMPROVEMENT DISTRICT NO. 488