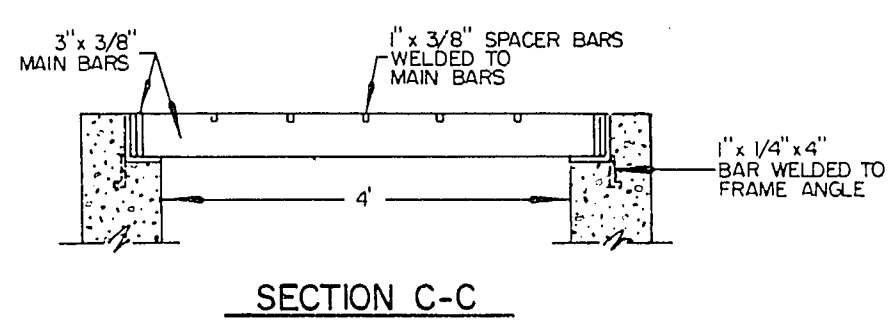
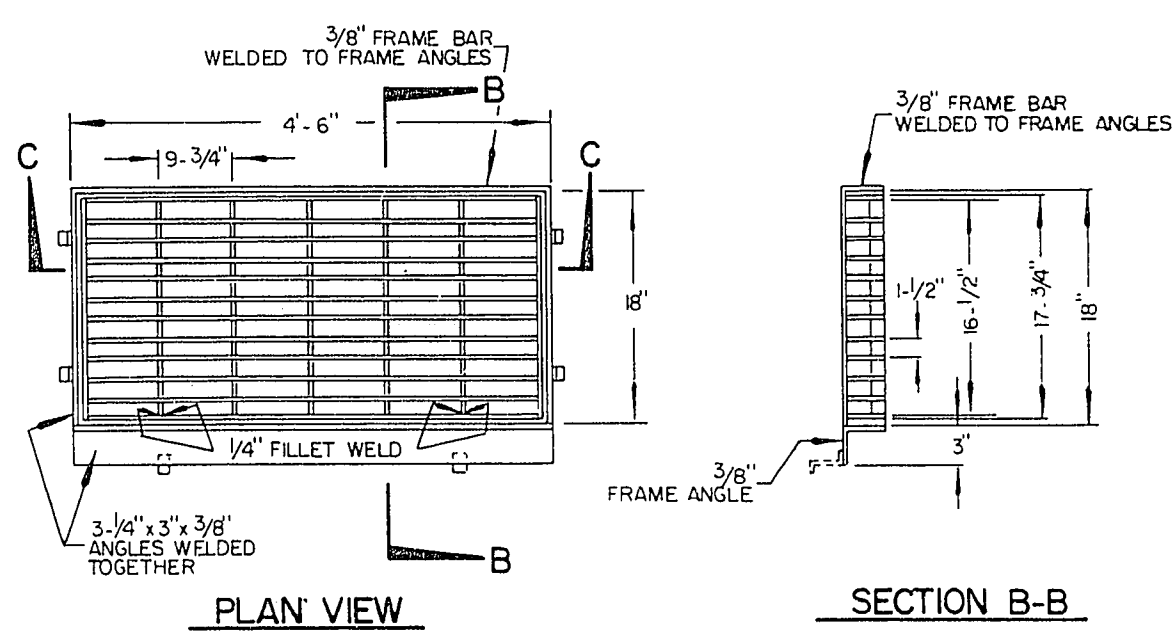
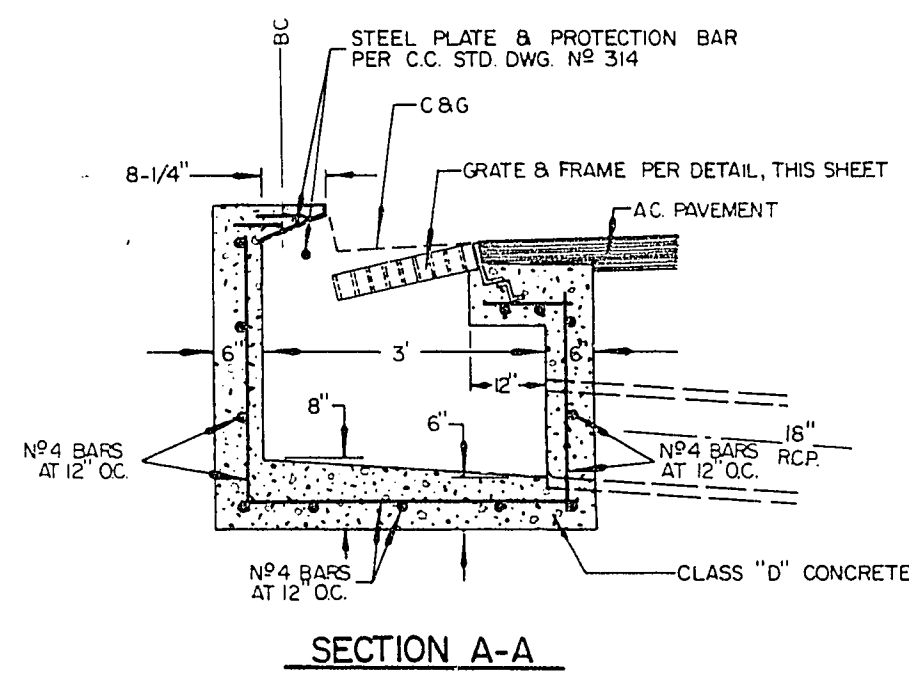


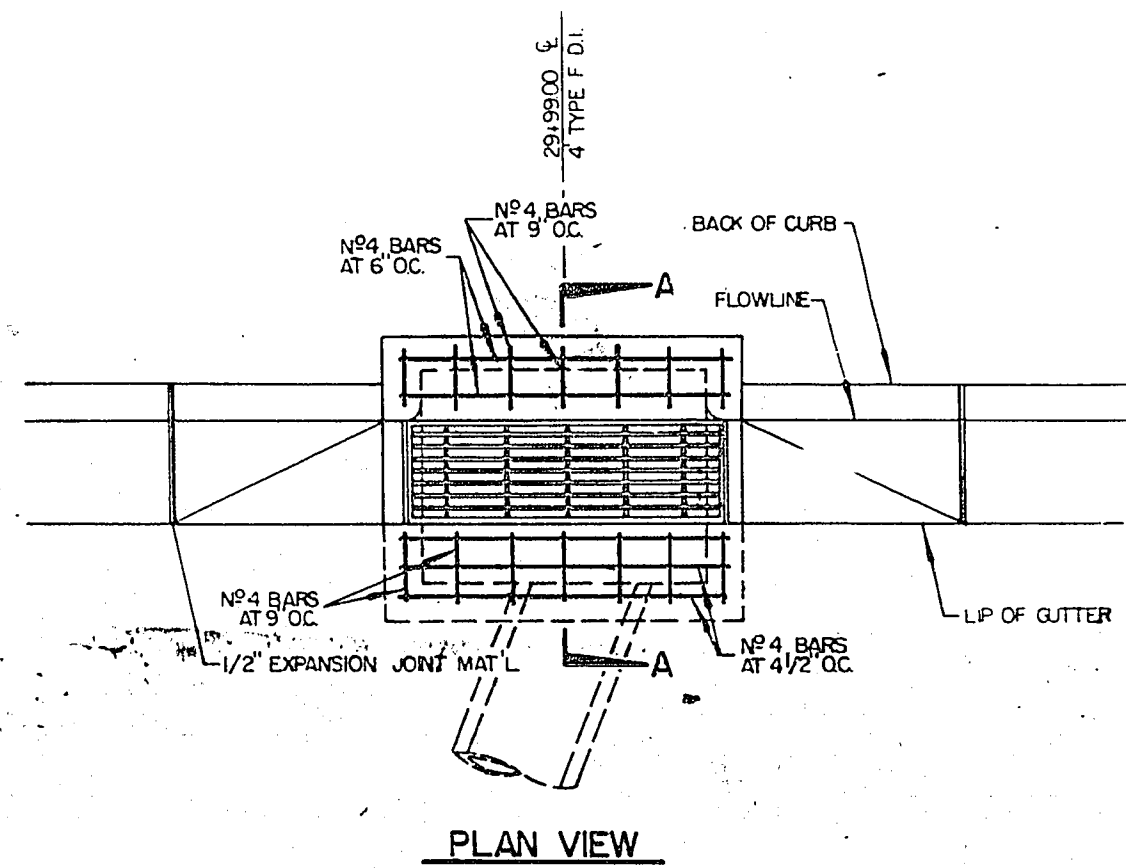
NOTE:
IF INLET PIPE ENTERS ON ONE SIDE OF MANHOLE THE MANHOLE STEPS SHALL BE LOCATED ON THE SIDE OPPOSITE THE INLET PIPE.



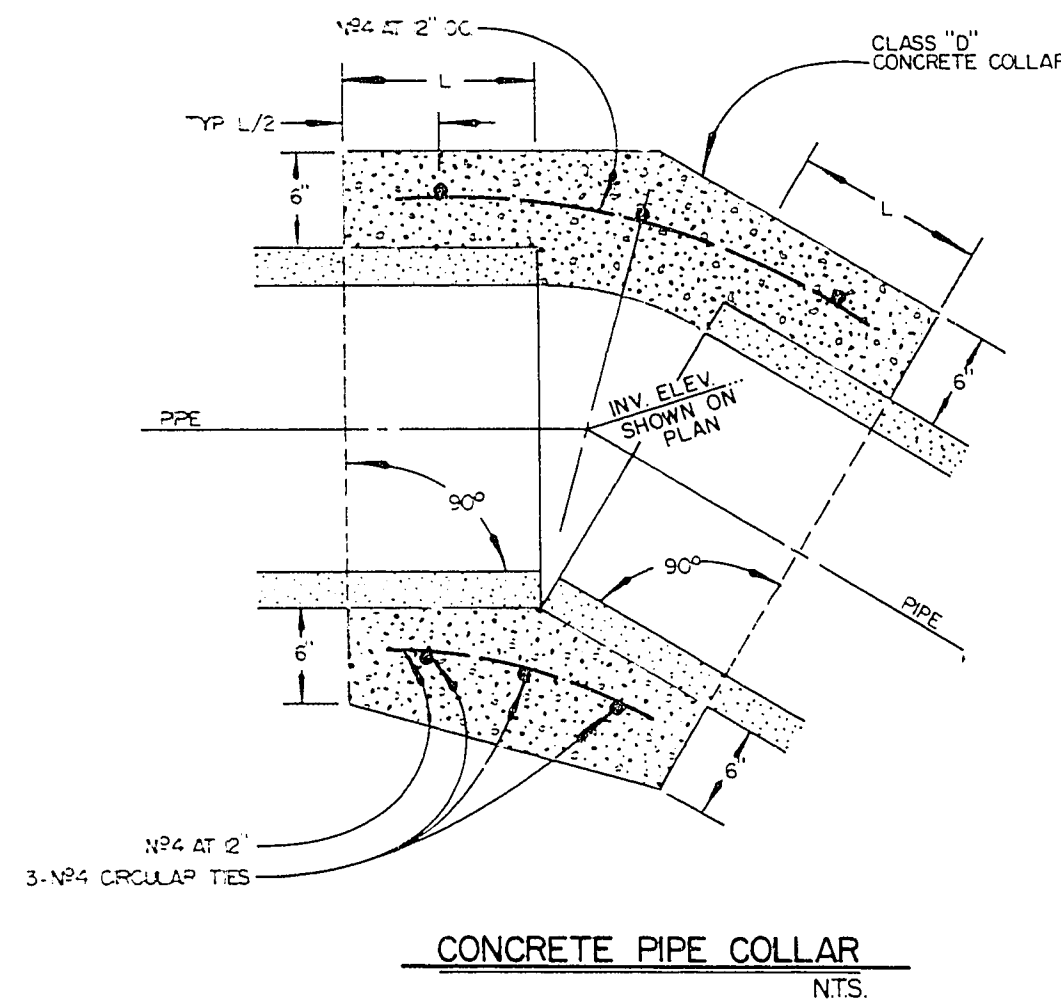
GRATE AND FRAME DETAIL
NTS



SECTION A-A

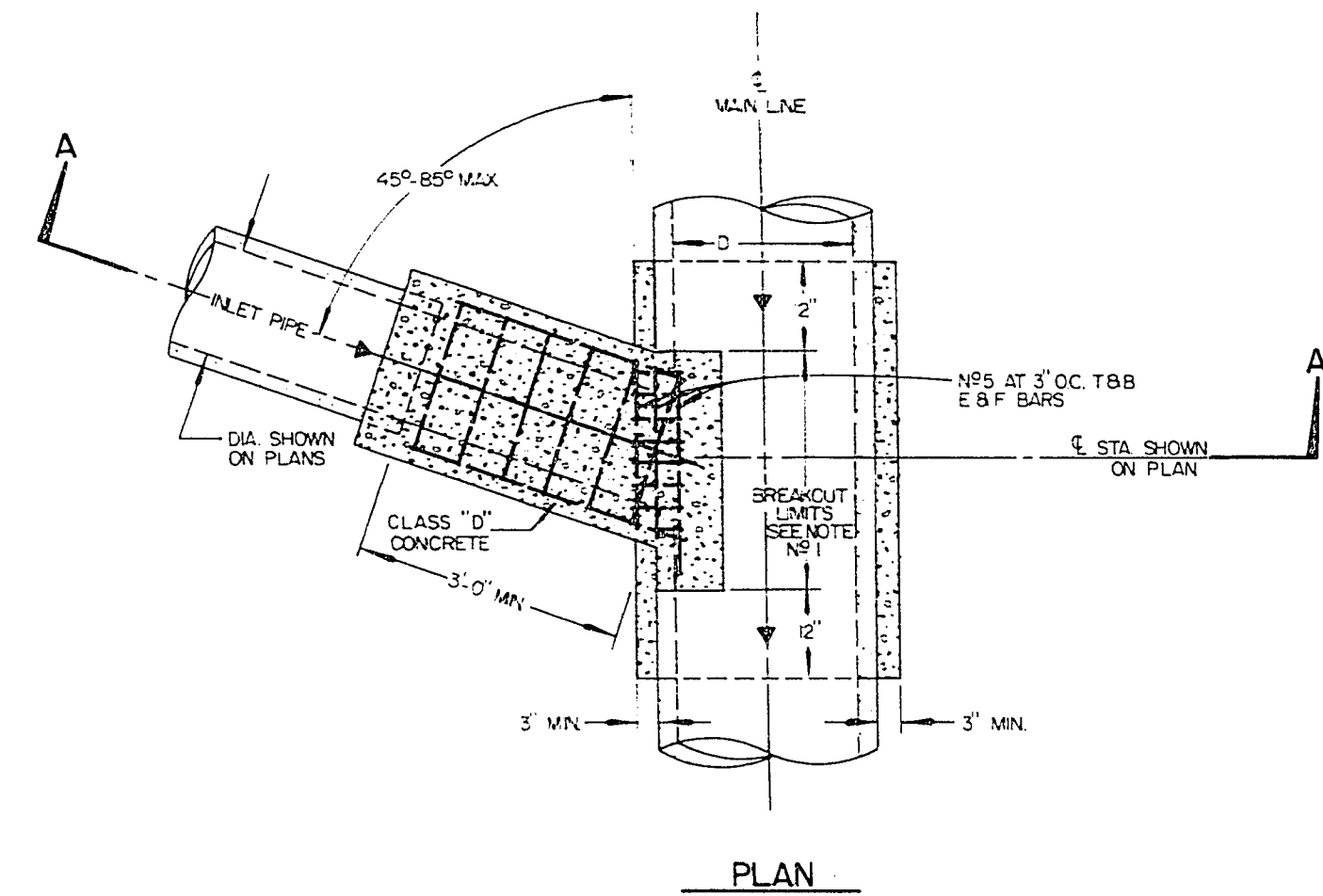


4\"/>

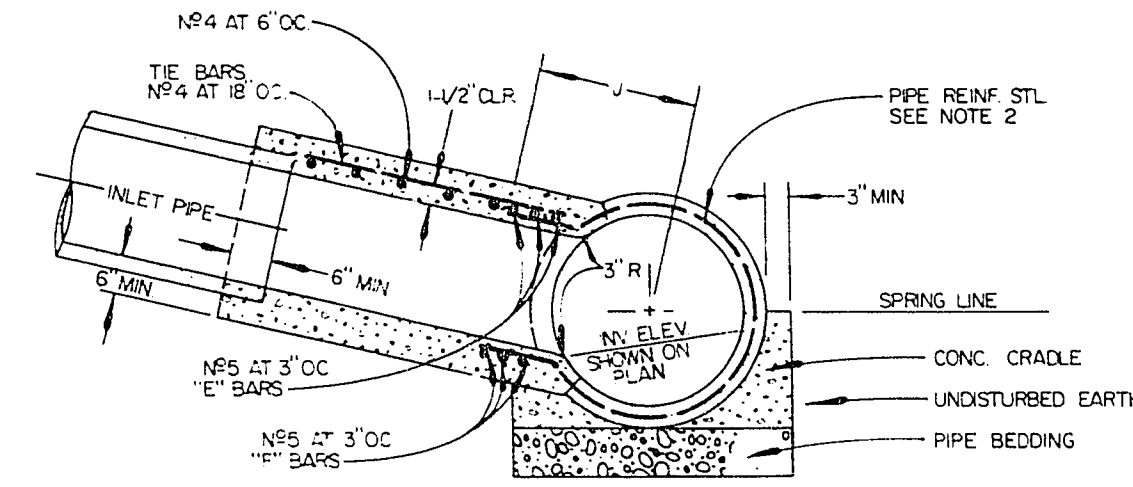


CONCRETE PIPE COLLAR
NTS

1. CONCRETE COLLAR IS REQUIRED WHERE THE CHANGE IN ALIGNMENT EXCEEDS THAT ALLOWED FOR AN ORDINARY JOINT.
2. L=1/2 FOR PIPES 24\"/>



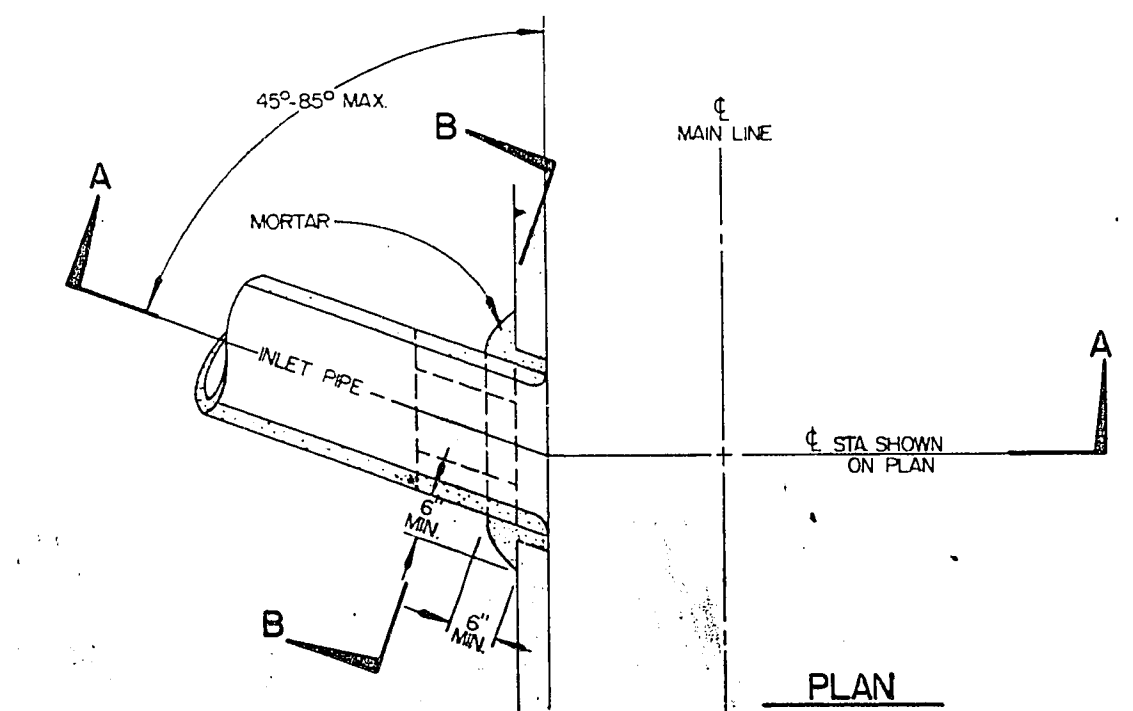
PLAN



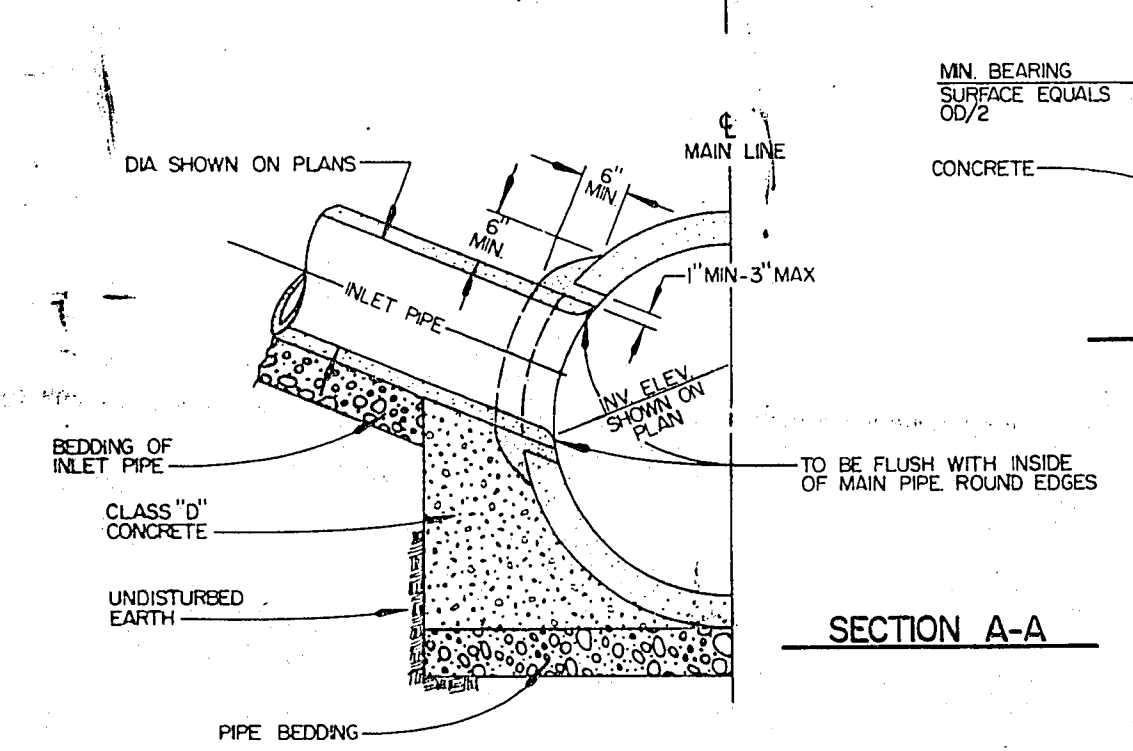
SECTION A-A

JUNCTION STRUCTURE DETAIL
NTS

1. BREAKOUT LIMITS SHALL BE DETERMINED AS FOLLOWS:
UPSTREAM LIMIT: AT THE INTERSECTION OF THE OUTSIDE OF THE INLET WALL WITH THE MAIN LINE PIPE WALL.
DOWNSTREAM LIMIT: 6 INCHES DOWNSTREAM OF THE INTERSECTION OF THE INLET WALL WITH THE MAIN LINE PIPE WALL.
THE OPENING SHALL BE RECTANGULAR, CUT NORMAL TO PIPE SURFACE AND WITHOUT DAMAGING REINFORCING STEEL. IF A JOINT IN THE MAIN LINE PIPE FALLS WITHIN THE LIMITS OF THE CONCRETE CRADLE, PROVIDE A CONCRETE ENCASUREMENT ONE FOOT ABOVE THE TOP OF THE MAIN LINE PIPE TO THE LIMITS OF THE CRADLE.
2. THE TRANSVERSE REINFORCEMENT IN PIPE SHALL BE CUT AT CENTER OF OPENING AND BENT INTO TOP AND BOTTOM SLABS OF INLET PIPE.
3. REINFORCING STEEL SHALL BE PLACED 1/2 INCHES CLEAR FROM FACE OF CONCRETE.
4. E AND F BARS SHALL BE CARRIED TO A POINT NOT LESS THAN J DISTANCE FROM CENTERLINE J=7/12 D+16 INCHES.

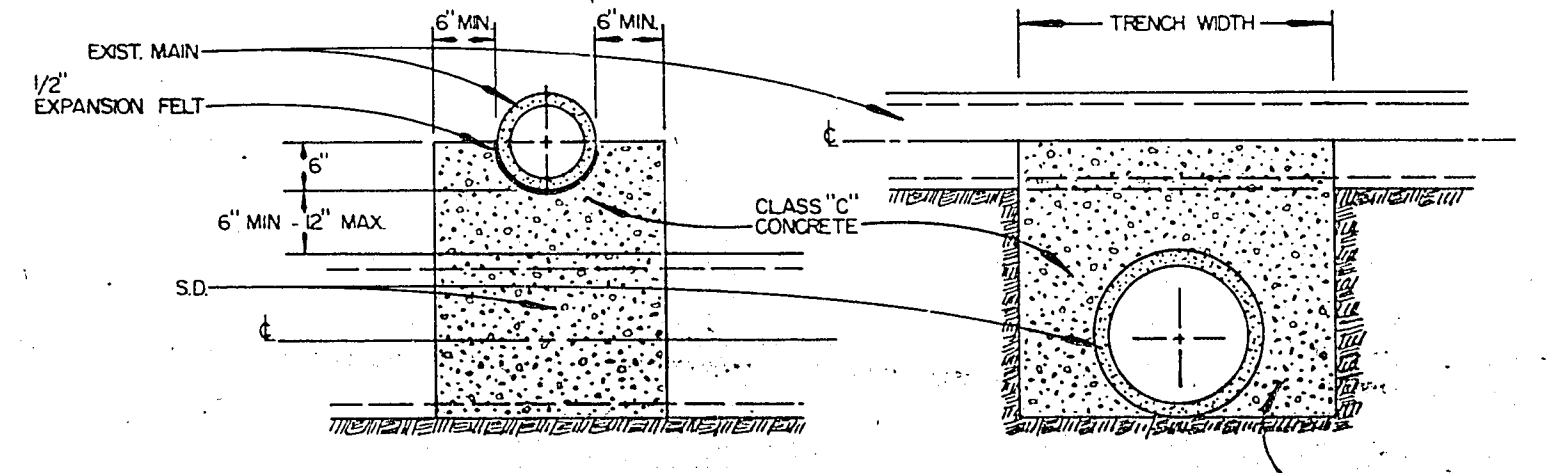


PLAN



SECTION A-A

CUT AND JOIN DETAIL
NTS



CONCRETE CRADLE
NTS

1. CONCRETE CRADLE TO BE USED AS UNDERGROUND UTILITY SUPPORT WHERE SEWER LINES ARE WITHIN 12\"/>

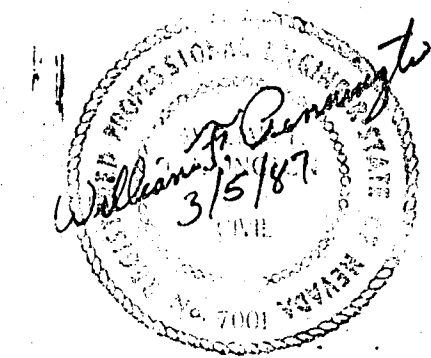
REV. NO.	DATE	DESCRIPTION	APPROVED

DESIGNED BY: *W. Pennington, K. Lambert*
 DRAWN BY: *KTV, CHC*
 CHECKED BY: *William P. Pennington*

CLARK COUNTY NEVADA
 DEPARTMENT OF PUBLIC WORKS

SMOKE RANCH ROAD
 MANHOLE DETAILS

SCALE	HORIZ: AS SHOWN	DRAWING NO.
	VERT: —	L-750 A
PROJECT NO.:	B30824R	
FIELD BOOK	281,341,595,596	SHT. 12 OF 13



327-V227