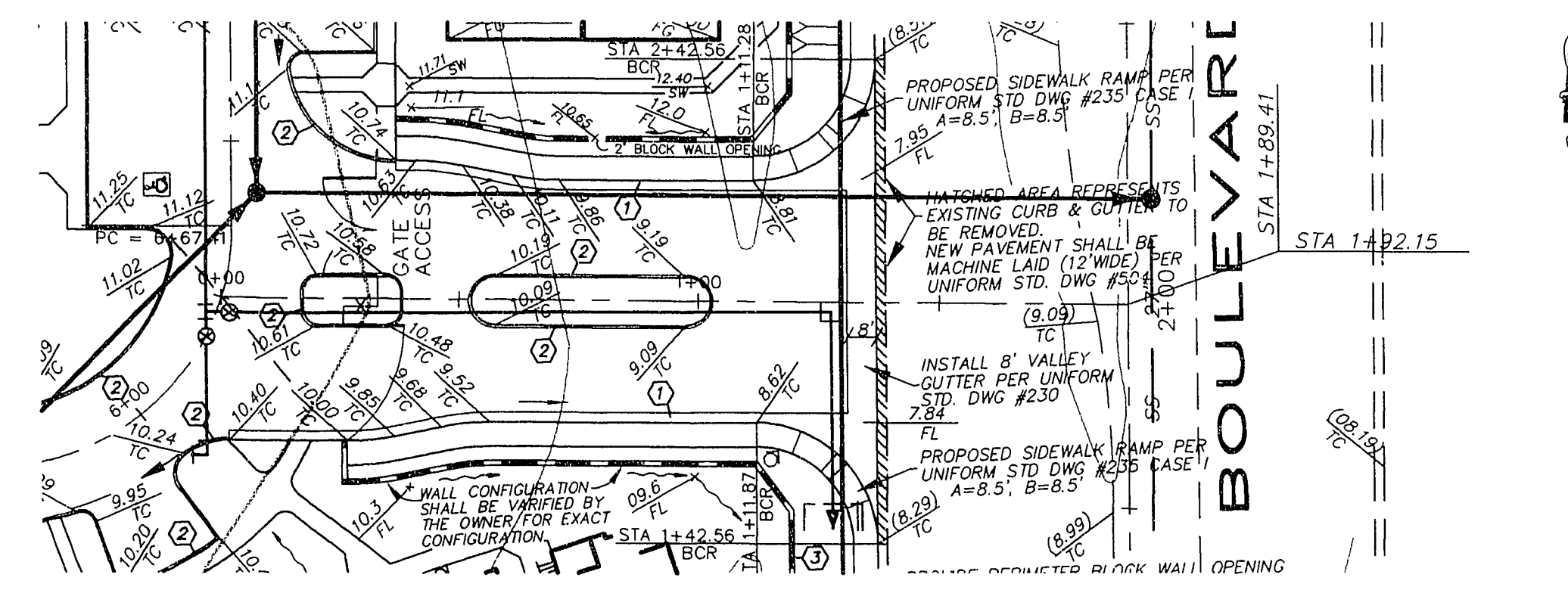
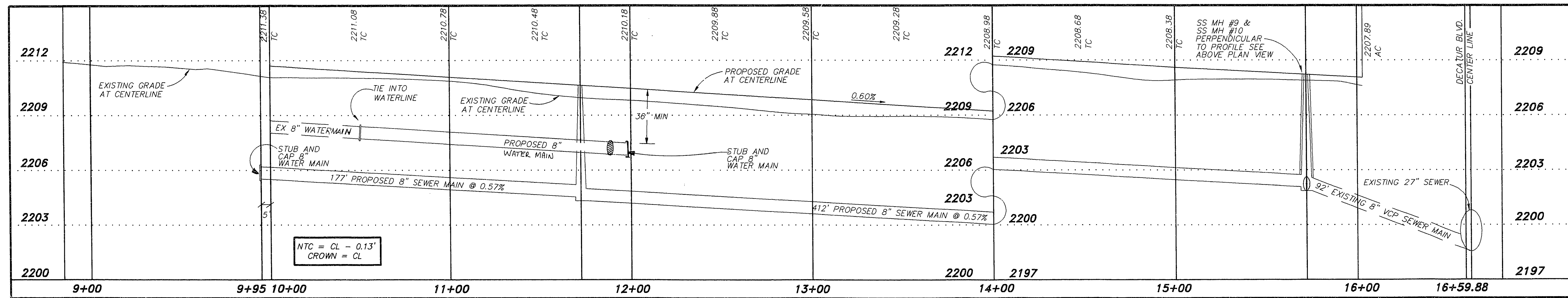
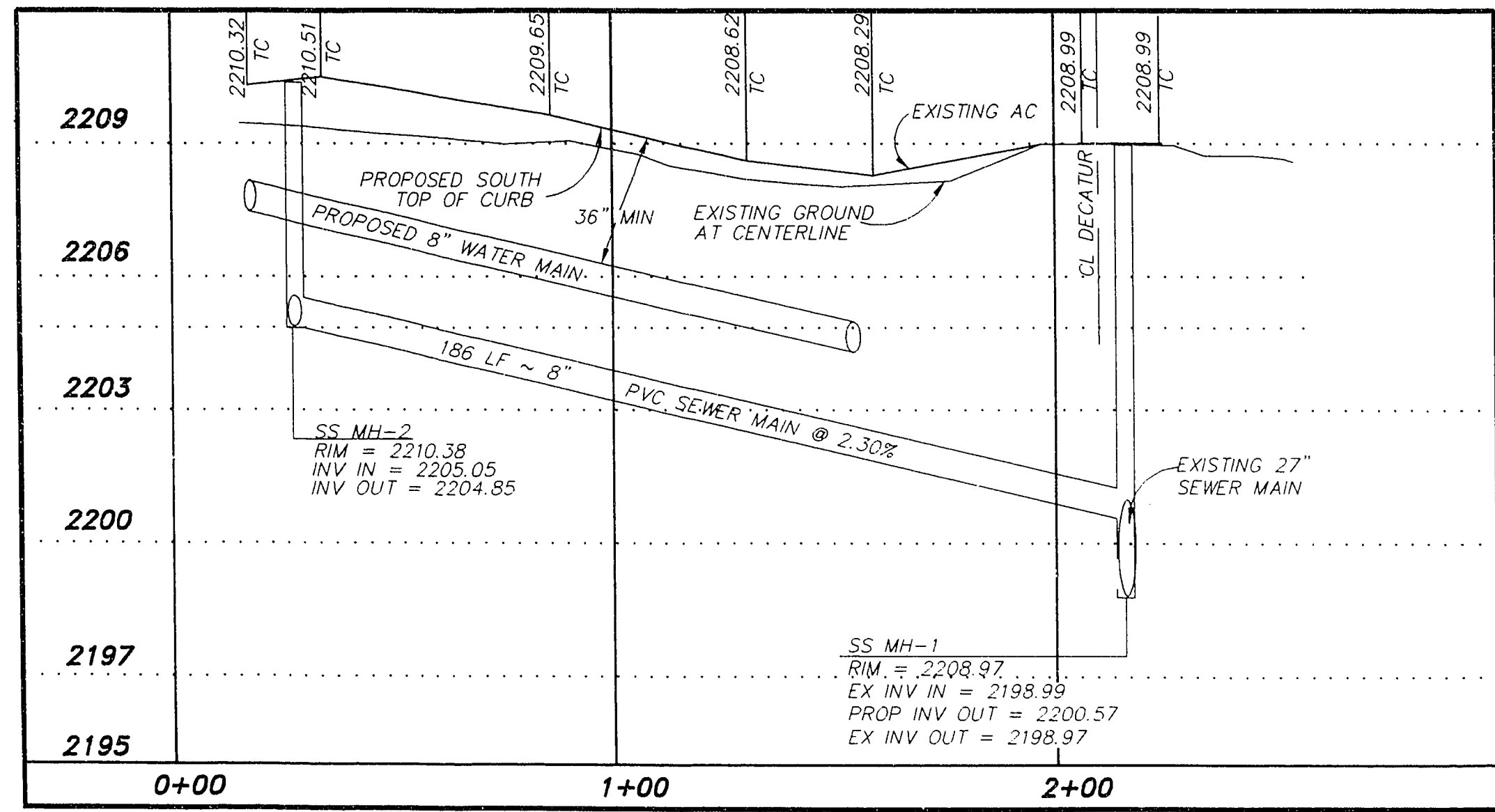


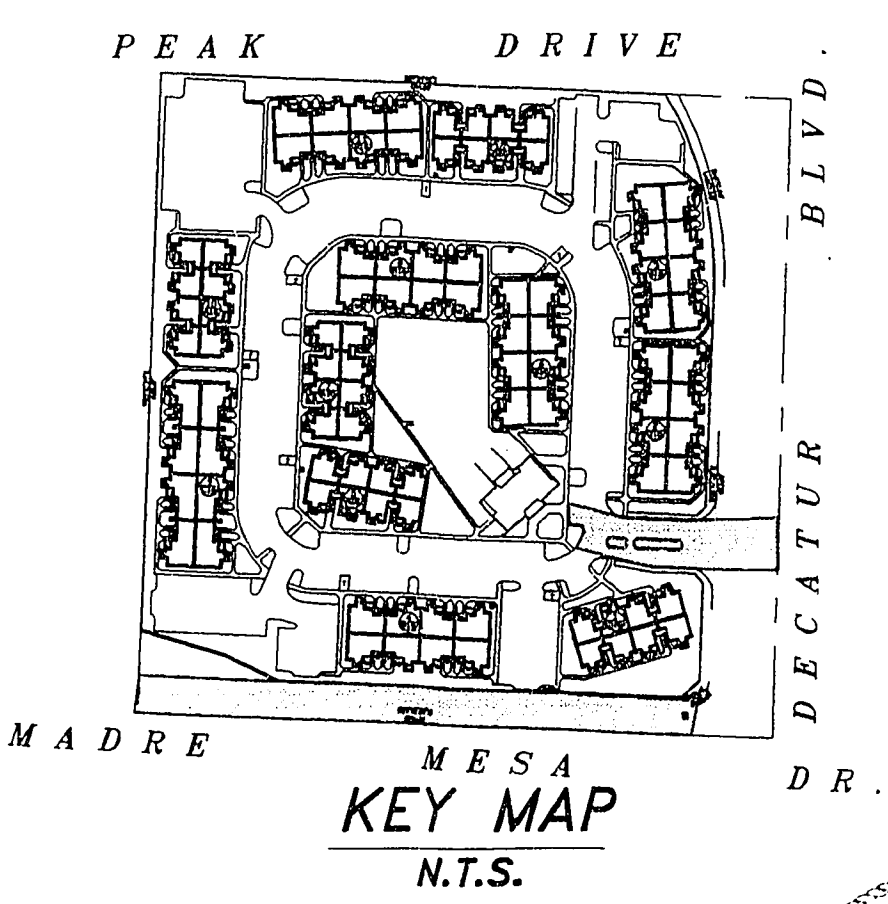
MADRE MESA DRIVE



SITE ENTRANCE



NOTE:
REFER TO UNIFORM STD. DWG # 208 FOR HALF STREET IMPROVEMENTS OF MADRE MESA DRIVE.



- NOTES:**
1. NOTIFY HUNSAKER & ASSOCIATES IMMEDIATELY OF ANY DISCREPANCIES IN THE PLANS OR CONDITIONS IN THE FIELD.
 2. PRIOR TO CONSTRUCTION THE CONTRACTOR SHALL LOCATE AND VERIFY SIZE, MATERIAL, DEPTH, CONDITION, PRESSURE, AND LOCATION OF ALL EXISTING UTILITY LINES WITHIN THE CONSTRUCTION AREA. HUNSAKER & ASSOCIATES SHALL BE CONTACTED ONCE THE UTILITY LINE IS LOCATED.
 3. PLANS MAY NOT INDICATE ALL EXISTING UTILITY LINES. CONTRACTOR IS TO EXERCISE EXTREME CAUTION DURING EXCAVATION IN ORDER TO AVOID DAMAGING ANY EXISTING UTILITY LINES. IF THE UTILITY LINES ARE DAMAGED BY THE CONTRACTOR, SUCH DAMAGE SHALL BE REPAIRED TO THE SATISFACTION OF THE OWNER AT THE CONTRACTOR'S EXPENSE.
 4. CONTRACTOR TO SAWCUT AND REMOVE EXISTING ASPHALT AND CONCRETE AS NECESSARY FOR UTILITY TRENCHES. BACKFILL AND PATCH ALL TRENCHES ACCORDING TO CITY OF LAS VEGAS STANDARDS.
 5. ALL WATER SERVICE LINES AND METERS SHALL BE INSTALLED PER L.V.V.W.D.
 6. CONTRACTOR TO FIELD VERIFY LOCATION AND INVERT OF MANHOLE PRIOR TO CONSTRUCTION. HUNSAKER & ASSOCIATES SHALL BE CONTACTED ONCE THIS INFORMATION HAS BEEN OBTAINED.
 7. ALL ONSITE SEWERS ARE PRIVATE AND ARE TO BE MAINTAINED BY OWNER.

Avoid cutting underground utility lines. It's costly
Call before you Dig
1-800-227-2600
UNDERGROUND SERVICE (USA)

NO.	DESCRIPTION	REVISIONS	BY	DATE	APPR.

CAD FILE NAME: 1529-SS1
DOCUMENT NO. 1340
BIV NO.

PREPARED BY: **Hunsaker & Associates**
Planning • Engineering • Surveying
1375 WINDY HOLLOW BLVD
LAS VEGAS, NEVADA 89115
(702) 897-4555

Las Vegas • San Bernardino • San Diego • Irvine
Nevada, Inc.
DOCUMENT NO. 1340

MADRE MESA
RANCHO DEL RAY
FALCON HOMES
LAS VEGAS, NEVADA

PLAN & PROFILE

SCALE(H): 1" = 30'
SCALE(V): 1" = 3'
DES. BY: MPV
DWN. BY: PAS
DATE: 10/94
PROJECT NO.
1529-1
SHEET
6 OF 7

11-20-88 1074-4389