

TONOPAH HWY.
 U.S. HWY. 95

NOTES:

1. NOTIFY HUNSAKER & ASSOCIATES IMMEDIATELY OF ANY DISCREPANCIES IN THE PLANS OR CONDITIONS IN THE FIELD.
2. PRIOR TO CONSTRUCTION THE CONTRACTOR SHALL LOCATE AND VERIFY SIZE, MATERIAL, DEPTH, CONDITION, PRESSURE, AND LOCATION OF ALL EXISTING UTILITY LINES WITHIN THE CONSTRUCTION AREA. HUNSAKER & ASSOCIATES SHALL BE CONTACTED ONCE THE UTILITY LINE IS LOCATED.
3. PLANS MAY NOT INDICATE ALL EXISTING UTILITY LINES. CONTRACTOR IS TO EXERCISE EXTREME CAUTION DURING EXCAVATION IN ORDER TO AVOID DAMAGING ANY EXISTING UTILITY LINES. IF THE UTILITY LINES ARE DAMAGED BY THE CONTRACTOR, SUCH DAMAGE SHALL BE REPAIRED TO THE SATISFACTION OF THE OWNER AT THE CONTRACTOR'S EXPENSE.
4. CONTRACTOR TO SAWCUT AND REMOVE EXISTING ASPHALT AND CONCRETE AS NECESSARY FOR UTILITY TRENCHES. BACKFILL AND PATCH ALL TRENCHES ACCORDING TO C.L.V. STANDARDS.
5. ALL WATER SERVICE LINES AND METERS SHALL BE INSTALLED PER L.V.V.W.D.
6. CONTRACTOR TO FIELD VERIFY LOCATION AND INVERT OF MANHOLE PRIOR TO CONSTRUCTION. HUNSAKER & ASSOCIATES SHALL BE CONTACTED ONCE THIS INFORMATION HAS BEEN OBTAINED.

SEWER CONTRIBUTION

192 UNITS @ 1 ERI PER UNIT
 APPROXIMATELY 17,280,000 GPD TOTAL
 365 DAYS PER YEAR
 AVERAGE DAILY FLOW = 47,342 GPD
 PEAK FACTOR = 3.3
 APPROXIMATE PEAK FLOW = 156,230 GPD

LEGEND

- PROPOSED PVC SEWER MAIN WITH 4" MANHOLE
- PROPOSED PVC WATER MAIN, FIRE HYDRANT, AND GATE VALVE
- PROPOSED 1-1/4" STREET LIGHT CONDUIT
- PROPOSED #3 1/2 PULL BOX
- PROPOSED WHEELCHAIR RAMP
- PROPOSED 4" SEWER SERVICE LATERAL
- PROPOSED 2" WATER SERVICE LATERAL
- PROPOSED 100 W. HPS STREET LIGHT
- EXISTING SEWER MAIN AND MANHOLE
- EXISTING WATER MAIN, FIRE HYDRANT, AND GATE VALVE
- EXISTING STREET LIGHT CONDUIT
- EXISTING STREET LIGHT
- PROPOSED STREET / STOP SIGN
- PROPOSED STOP BAR
- CURB TO BE PAINTED RED - FIRE LANE
- PROPOSED TRASH ENCLOSURE
- PROPOSED 3 1/2" PULL BOX
- PROPOSED BLOCK WALL

DOUBLE CHECK VALVE ASSEMBLY

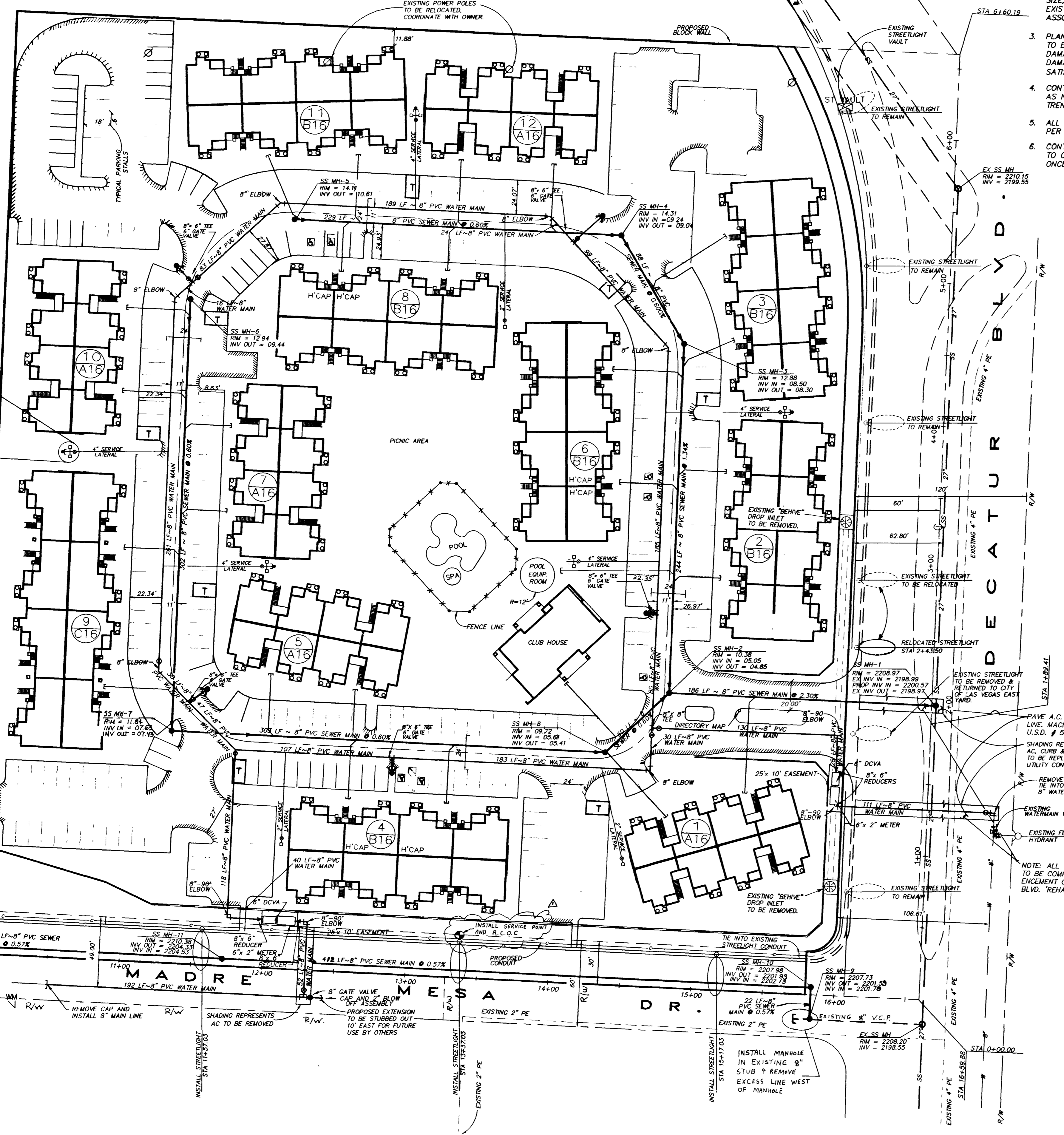
APPROVED DOUBLE CHECK VALVE ASSEMBLY(S) SHALL BE INSTALLED PER THE DISTRICT'S STANDARD PRACTICE AND THE L.V.V.W.D. # 504. (10" WIDE)

QUANTITY ESTIMATE
 (FOR BIDDING PURPOSES ONLY)

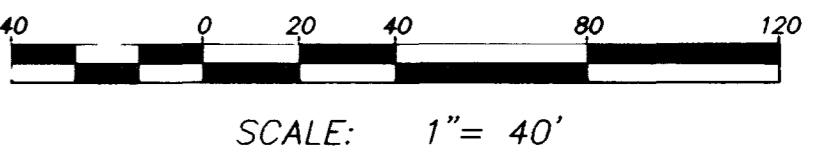
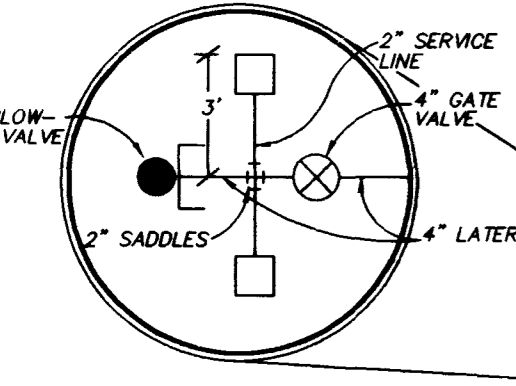
WATER IMPROVEMENTS	AMOUNT	UNIT
8" WATER MAIN	2054	LF
FIRE HYDRANT ASSEMBLY W/ 8" x 6" TEE, GATE VALVE	5	EA
8" GATE VALVES	8	EA
6" x 2" METER	2	EA
6" DCVA	2	EA
8" TO 6" REDUCER	4	EA
8" 90° ELBOW	5	EA
8" 45° FITTING	6	EA
8" x 8" TEE	1	EA
2" BLOW-OFF ASSEMBLIES	1	EA
SEWER IMPROVEMENTS		
8" SEWER MAIN	1424	LF
SEWER MANHOLES < 6'	7	EA
SEWER MANHOLES > 6'	1	EA

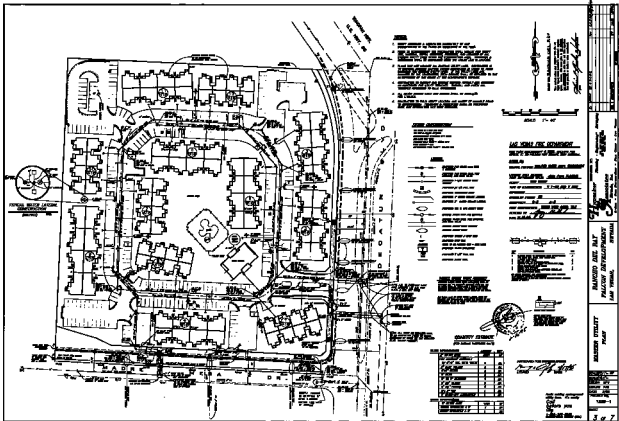
APPROVED FOR CONSTRUCTION
 [Signature]
 LVVWD DATE 4/17/95

Avoid cutting underground utility lines. It's costly
 Call before you Dig
 1-800-227-2600
 UNDERGROUND SERVICE (USA)



TYPICAL WATER LATERAL CONSTRUCTION (MULTIPLE) N.T.S.





THIS PLAN IS THE PROPERTY OF THE
 ENGINEER AND ARCHITECT AND IS NOT TO BE
 REPRODUCED OR COPIED IN ANY MANNER
 WITHOUT THE WRITTEN CONSENT OF THE
 ENGINEER AND ARCHITECT.

SCALE 1" = 40'

DATE 11-20-85

BY J. J. [Signature]

GENERAL NOTES

1. SEE GENERAL NOTES TO THE PROJECT.
2. ALL DIMENSIONS ARE TO FACE UNLESS OTHERWISE NOTED.
3. ALL UTILITIES SHOWN ARE AS SHOWN ON THE SURVEY.
4. ALL UTILITIES TO BE INSTALLED SHALL BE IN ACCORDANCE WITH THE LATEST EDITIONS OF THE APPROPRIATE CODES.



GENERAL NOTES

1. SEE GENERAL NOTES TO THE PROJECT.
2. ALL DIMENSIONS ARE TO FACE UNLESS OTHERWISE NOTED.
3. ALL UTILITIES SHOWN ARE AS SHOWN ON THE SURVEY.
4. ALL UTILITIES TO BE INSTALLED SHALL BE IN ACCORDANCE WITH THE LATEST EDITIONS OF THE APPROPRIATE CODES.

GENERAL NOTES

1. SEE GENERAL NOTES TO THE PROJECT.
2. ALL DIMENSIONS ARE TO FACE UNLESS OTHERWISE NOTED.
3. ALL UTILITIES SHOWN ARE AS SHOWN ON THE SURVEY.
4. ALL UTILITIES TO BE INSTALLED SHALL BE IN ACCORDANCE WITH THE LATEST EDITIONS OF THE APPROPRIATE CODES.



NO.	DESCRIPTION	DATE	BY
1	ISSUED FOR PERMIT	11-20-85	J. J. [Signature]
2	ISSUED FOR CONSTRUCTION		
3	ISSUED FOR AS-BUILT		
4	ISSUED FOR RECORD		
5	ISSUED FOR ARCHIVE		

PROJECT NO. 11-20-85

DATE 11-20-85

BY J. J. [Signature]

SCALE 1" = 40'

DATE 11-20-85

BY J. J. [Signature]

PROJECT NO. 11-20-85

DATE 11-20-85

BY J. J. [Signature]

SCALE 1" = 40'

DATE 11-20-85

BY J. J. [Signature]