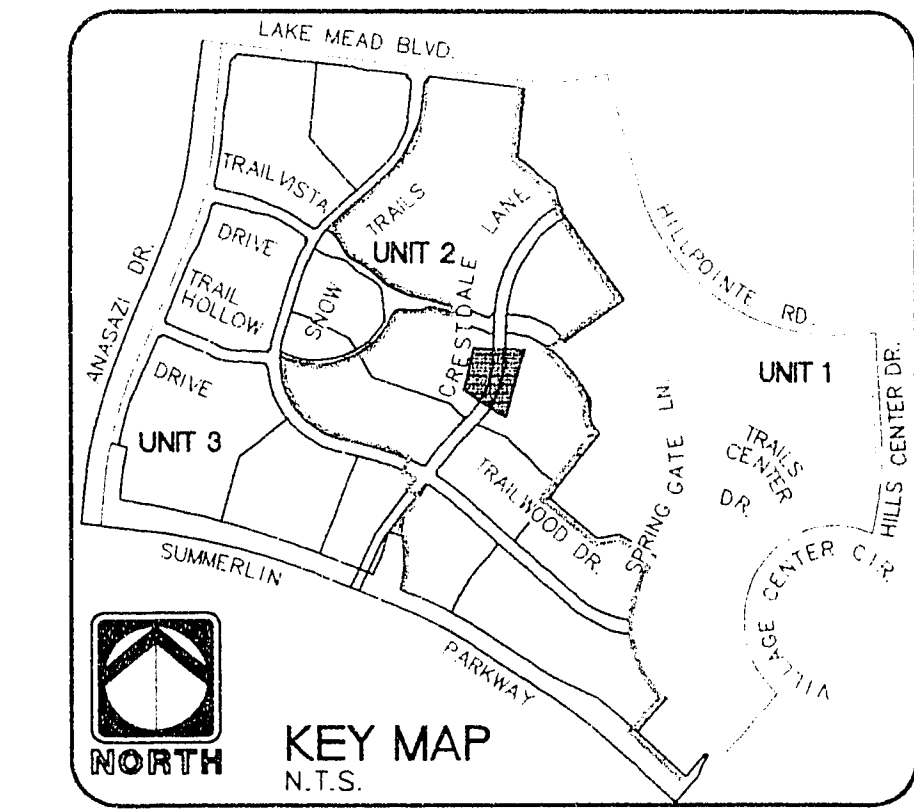
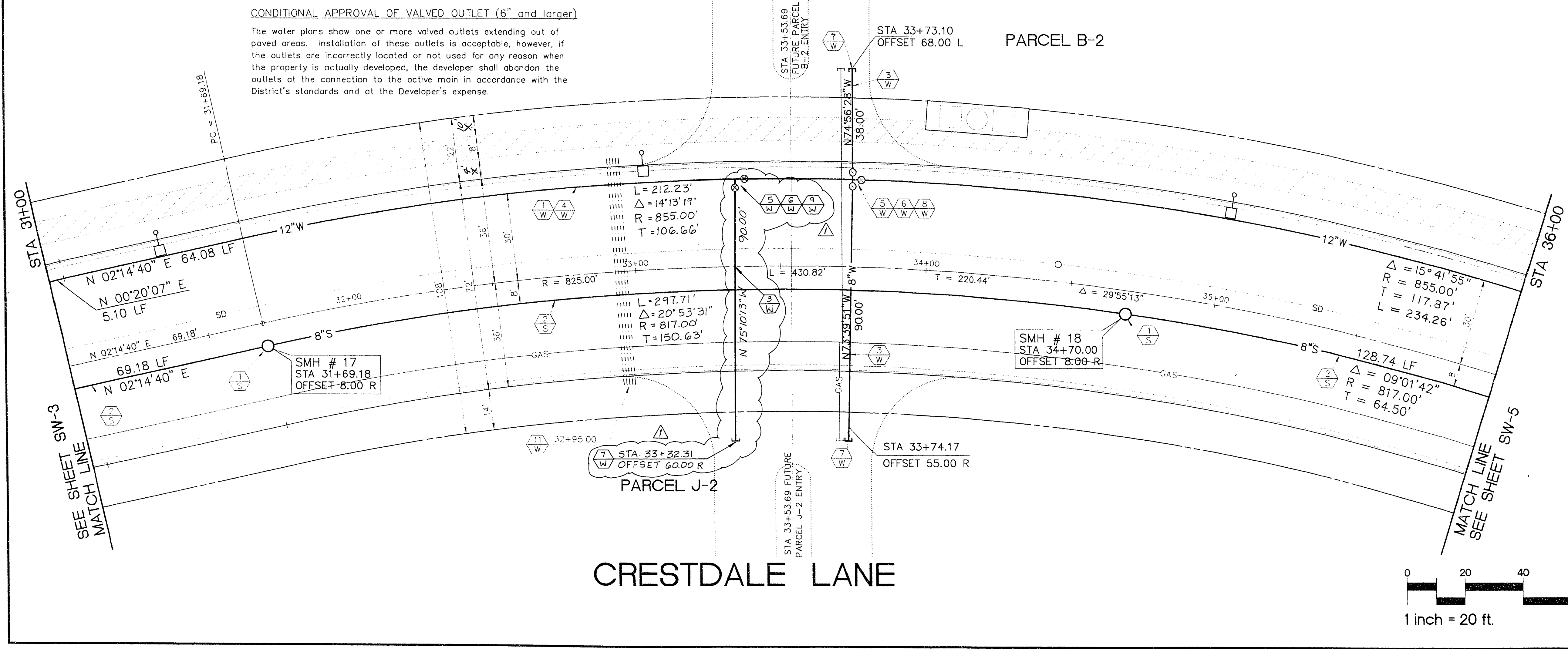


- CONSTRUCTION NOTES (SEWER)**
- 1. INSTALL 2 EA. STANDARD 4' SEWER MANHOLE PER CLARK COUNTY SANITATION DISTRICT STANDARD DRAWINGS.
  - 2. INSTALL 495.83 L.F. 8" PVC (SDR-35) SEWER LINE.
- CONSTRUCTION NOTES (WATER)**
- 1. INSTALL ALL WATER MAINS AND APPURTENANCES PER L.V.V.W.D. STD. PLATES.
  - 2. INSTALL 128.74 L.F. 8" PVC (C-900) WATER PIPE.
  - 3. INSTALL 510.57 L.F. 12" PVC (C-900) WATER PIPE.
  - 4. INSTALL 2 EA. 8" GATE VALVE.
  - 5. INSTALL 2 EA. 12" GATE VALVE.
  - 6. INSTALL 3 EA. END CAP AND CORP STOP. PER L.V.V.W.D. STD. PLATE #4.
  - 7. INSTALL 1 EA. 12" X 8" CROSS AND THRUST BLOCK PER L.V.V.W.D. STD. PLATE NO. 5.
  - 8. INSTALL 1 SET 2-6" PVC AND 3-4" FVC (SDR-35) SLEEVES FOR FUTURE ELECTRICAL OR IRRIGATION PURPOSES.
  - 9. INSTALL 1 EA. 12" X 8" TEE.
- GENERAL NOTES**
- PIPE LENGTHS SHOWN ARE FROM CENTERLINE OF MANHOLE TO CENTERLINE OF MANHOLE OR MATCHLINE AND ARE BASED ON LENGTHS AT CENTERLINE OF UTILITY (TYPICAL ALL SHEETS).
  - UTILITY LOCATIONS ARE BASED ON STREET CENTERLINE STATIONING.

L.V.V.W.D. *[Signature]* 4/17/99  
DATE

**PROFILE SCALE**  
HORIZONTAL 1" = 20'  
VERTICAL 1" = 4'

**CONDITIONAL APPROVAL OF VALVED OUTLET (6" and larger)**  
The water plans show one or more valved outlets extending out of paved areas. Installation of these outlets is acceptable, however, if the outlets are incorrectly located or not used for any reason when the property is actually developed, the developer shall abandon the outlets at the connection to the active main in accordance with the District's standards and at the Developer's expense.



**RECORD DRAWING**  
RECORD INFORMATION PROVIDED BY FIELD CONTRACTOR

HOWARD HUGHES PROPERTIES  
SUMMERLIN VILLAGE 7 - THE TRAILS - UNIT 2  
CRESTDALE LANE  
PLAN AND PROFILE  
STA 31+00 - STA 36+00

ENGINEER  
THE KETH COMPANIES  
NEVADA  
4082 SO INDUSTRIAL RD LAS VEGAS, NV 89103 (702) 733 0050

RECOMMENDED  
*[Signature]* 10584  
GARY R. BUSBY R.P.E.  
DATE 6/15/99

REVISIONS

NO.	DATE	DESCRIPTION	APPROVAL
1	6/27/99	ISSUED FOR CONSTRUCTION	
2			
3			
4			
5			
6			
7			
8			
9			
10			

SHEET  
**SW-4**  
SHT 29 OF 48

0 20 40 80  
1 inch = 20 ft.

**NORTH**

Call before you Dig.  
1-800-227-2600

11-2-90 3074-4271-2