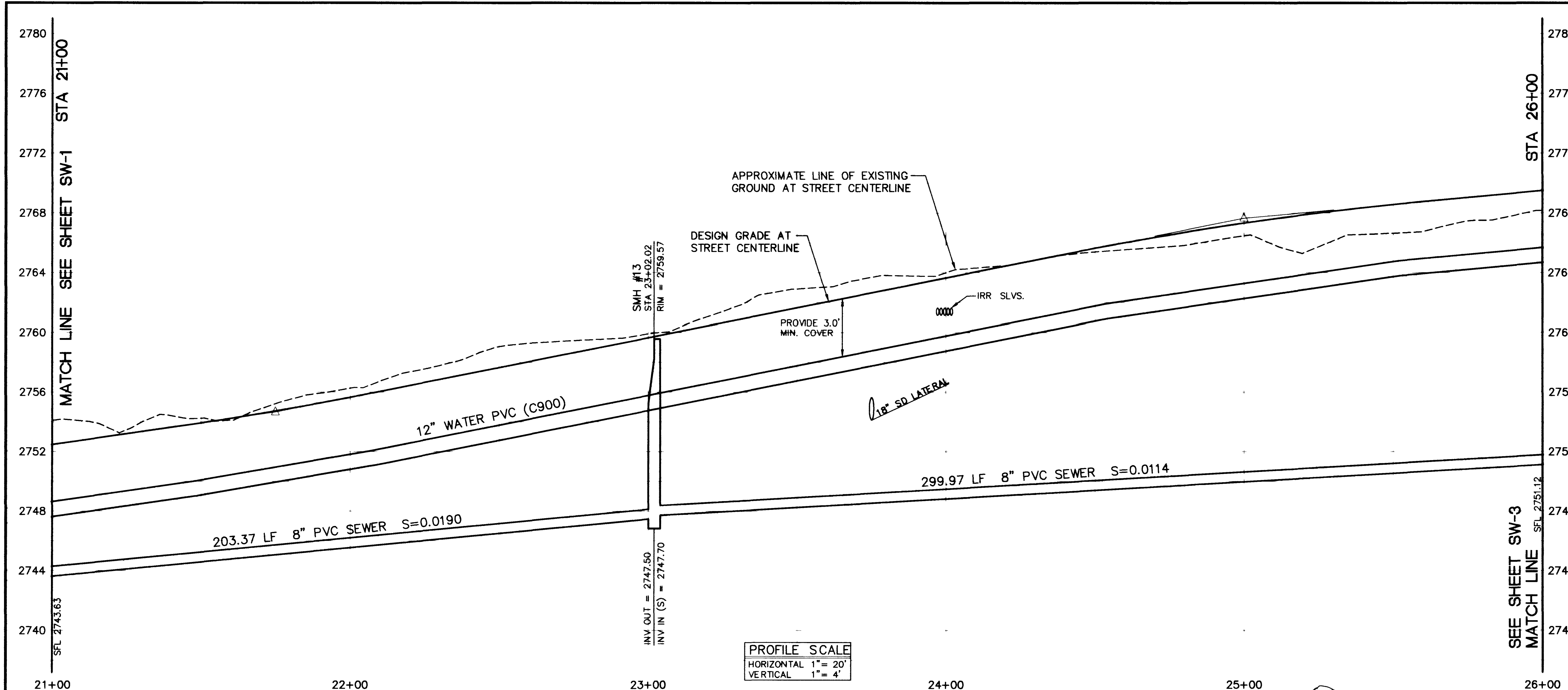


10 USM4071PV4075M02 Tue Jun 14 11:59:55 1994 SHARED 1-9 WHITELDUT 10 SNA.LD 11 : UP: 486 50410
HP Designnet 6001 HP-G/L2 ADJ. 4 2 Plotter driver by Hewlett-Packard 1 0



- CONSTRUCTION NOTES (SEWER)**
- 1 INSTALL 1 EA STANDARD 4' SEWER MANHOLE PER CLARK COUNTY SANITATION DISTRICT STANDARD DRAWINGS
 - 2 INSTALL 503.34 LF 8" PVC (SDR-35) SEWER LINE
- CONSTRUCTION NOTES (WATER)**
- 1 INSTALL ALL WATER MAINS AND APPURTENANCES PER LVVWD STD PLATES
 - 2 INSTALL 38 LF 8" PVC (C-900) WATER PIPE
 - 3 INSTALL 487.50 LF 12" PVC (C-900) WATER PIPE
 - 4 INSTALL 1 EA 8" GATE VALVE
 - 5 INSTALL 1 EA 12" GATE VALVE
 - 6 INSTALL 1 EA END CAP AND CORP STOP
 - 7 INSTALL 1 EA 12" X 8" TEE AND THRUST BLOCK
 - 8 INSTALL 1 SET 2-6" PVC AND 3-4" PVC (SDR-35) SLEEVES FOR FUTURE ELECTRICAL OR IRRIGATION PURPOSES
 - 9 INSTALL 1 EA FIRE HYDRANT

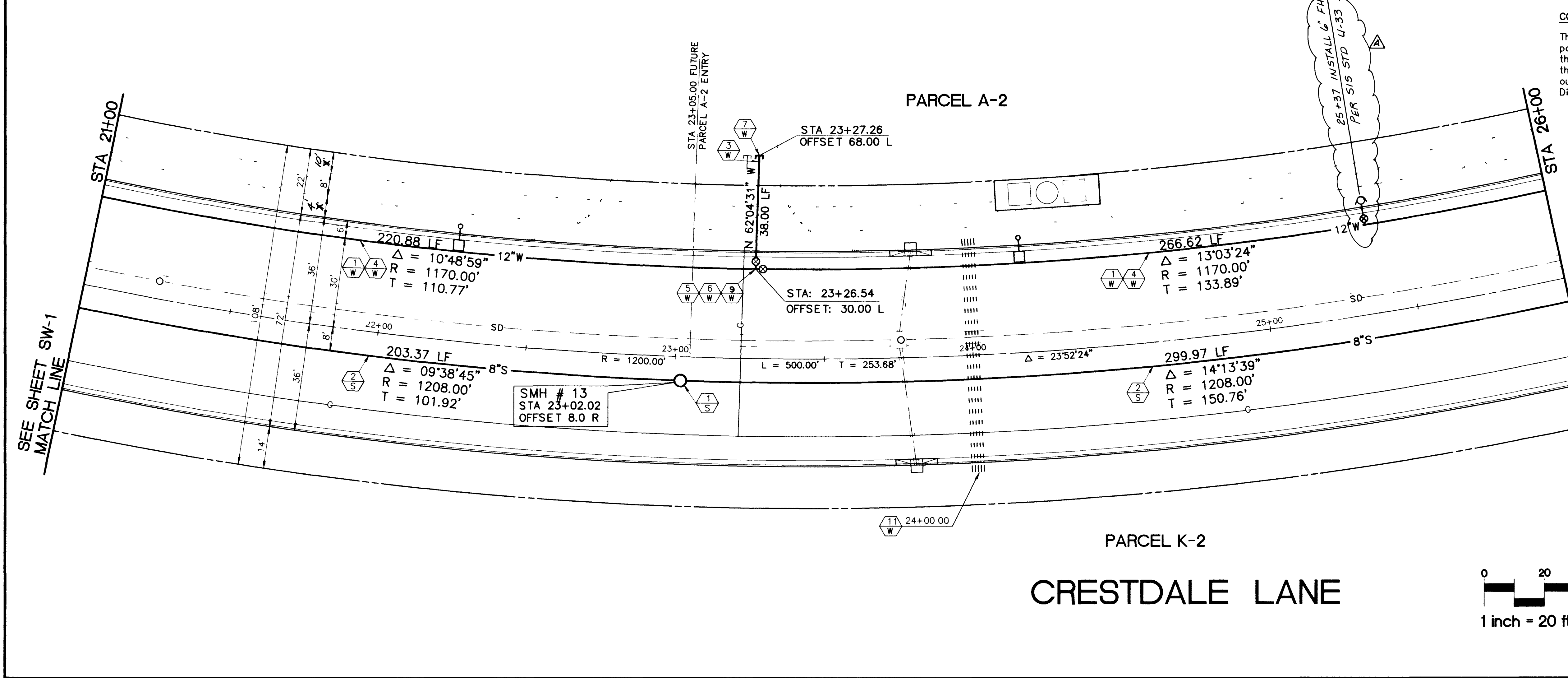
GENERAL NOTES

- 1 PIPE LENGTHS SHOWN ARE FROM CENTERLINE OF MANHOLE TO CENTERLINE OF MANHOLE OR MATCHLINE AND ARE BASED ON LENGTHS AT CENTERLINE OF UTILITY (TYPICAL ALL SHEETS)
- 2 UTILITY LOCATIONS ARE BASED ON STREET CENTERLINE STATIONING

RECOMMENDED
 LVVWD DATE 6/17/94
 GARY R. BUSBY R.P.E.

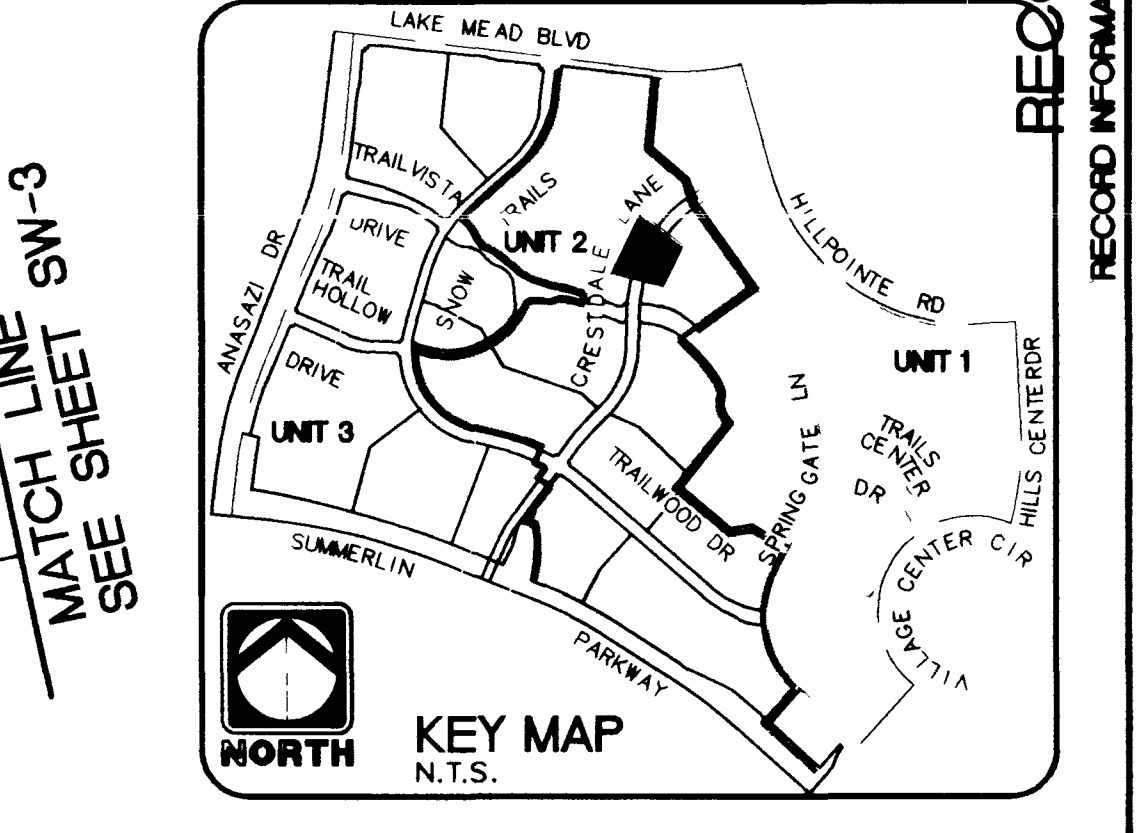
CONDITIONAL APPROVAL OF VALVED OUTLET (6" and larger)

The water plans show one or more valved outlets extending out of paved areas. Installation of these outlets is acceptable, however, if the outlets are incorrectly located or not used for any reason when the property is actually developed, the developer shall abandon the outlets at the connection to the active main in accordance with the District's standards and at the Developer's expense.



RECORD DRAWING

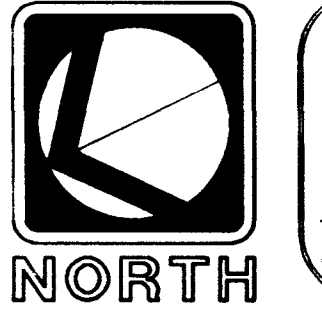
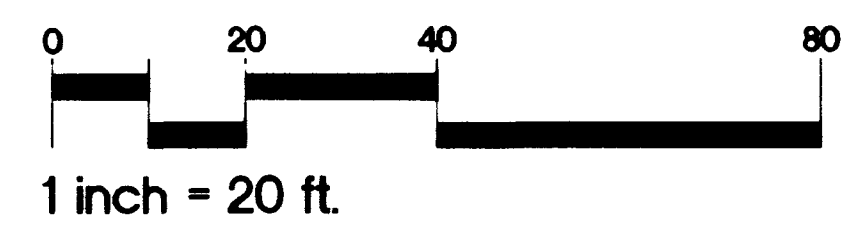
RECORD INFORMATION PROVIDED BY FIELD CONTRACTOR
 ENGINEER
 THE KEITH COMPANIES
 NEVADA
 4002 SO. INDUSTRIAL RD. LAS VEGAS, NV 89103 (702) 733-1050



Howard Hughes Properties
 SUMMERLIN VILLAGE 7 - THE TRAILS - UNIT 2
 CRESTDALE LANE
 PLAN AND PROFILE
 STA 21+00 - STA 26+00

Call before you Dig.
 1-800-227-2600
 UNDERGROUND SERVICE (USG)

REV	DATE	DESCRIPTION	APPROVAL
1	9/15/94	RELOCATED FH TO 26+57 (FROM 27+3)	



SHEET
SW-2
 SHT 27 OF 42

1347 11-2-77 3074-4271-2

