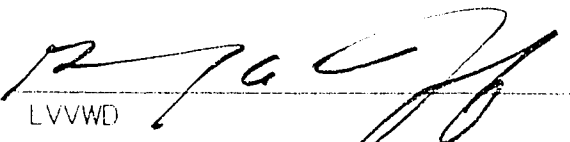


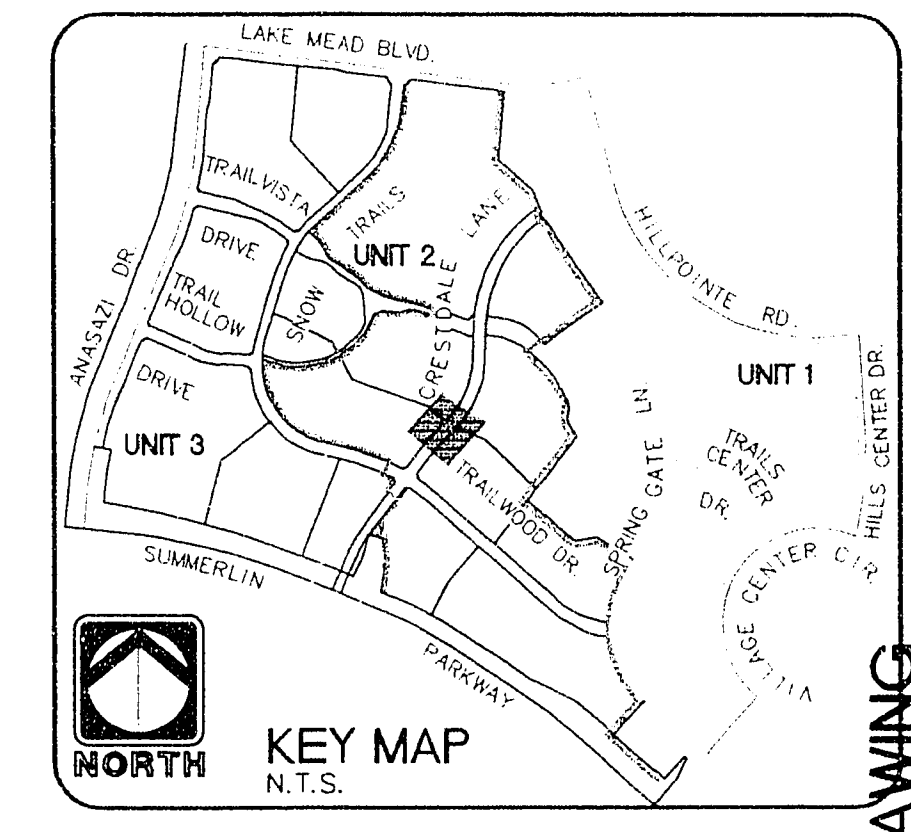
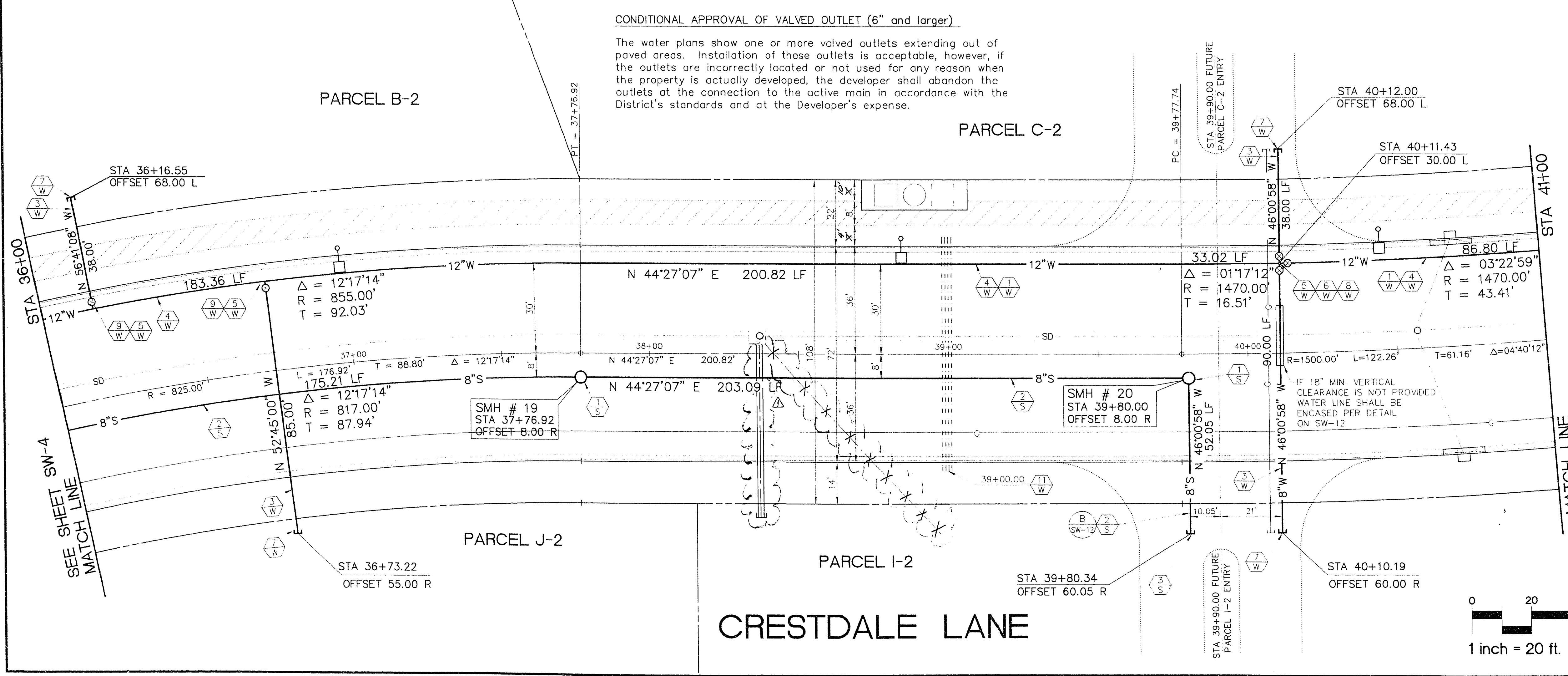
- CONSTRUCTION NOTES (SEWER)**
- 1. INSTALL 2 EA. STANDARD 4" SEWER MANHOLE PER CLARK COUNTY SANITATION DISTRICT STANDARD DRAWINGS.
  - 2. INSTALL 430.35 L.F. 8" PVC (SDR-35) SEWER LINE.
  - 3. INSTALL 1 EA. 8" PVC PLUG AND CAP.
- CONSTRUCTION NOTES (WATER)**
- 1. INSTALL ALL WATER MAINS AND APPURTENANCES PER L.V.V.D. STD. PLATES.
  - 2. INSTALL 251.00 L.F. 8" PVC (C-900) WATER PIPE.
  - 3. INSTALL 504.00 L.F. 12" PVC (C-900) WATER PIPE.
  - 4. INSTALL 4 EA. 8" GATE VALVE.
  - 5. INSTALL 1 EA. 12" GATE VALVE.
  - 6. INSTALL 3 EA. END CAP AND CORP STOP PER LVVVD STD. PLT # 4.
  - 7. INSTALL 1 EA. 12" X 8" CROSS AND THRUST BLOCK.
  - 8. INSTALL 2 EA. 12" X 8" TEE.
  - 9. INSTALL 1 SET 2-6" PVC AND 3-4" PVC (SDR-35) SLEEVES FOR FUTURE ELECTRICAL OR IRRIGATION PURPOSES.
- GENERAL NOTES**
- PIPE LENGTHS SHOWN ARE FROM CENTERLINE OF MANHOLE TO CENTERLINE OF MANHOLE OR MATCHLINE AND ARE BASED ON LENGTHS AT CENTERLINE OF UTILITY (TYPICAL ALL SHEETS).
  - UTILITY LOCATIONS ARE BASED ON STREET CENTERLINE STATIONING.
- 
 6/11/99  
 LVVWD DATE

REV.	DATE	DESCRIPTION
1	9/20/94	RELOCATED 24" S.D.
2	6/11/99	DATE

RECOMMENDED  
 GARY R. BUSBY  
 10694 R.P.E.  
 DATE 6/11/99

**CONDITIONAL APPROVAL OF VALVED OUTLET (6" and larger)**

The water plans show one or more valved outlets extending out of paved areas. Installation of these outlets is acceptable, however, if the outlets are incorrectly located or not used for any reason when the property is actually developed, the developer shall abandon the outlets at the connection to the active main in accordance with the District's standards and at the Developer's expense.



Call before you Dig.  
 1-800-227-2600  
 UNDERGROUND SERVICE COMPANY

**RECORD DRAWING**  
 RECORD INFORMATION PROVIDED BY FIELD CONTRACTOR

HOWARD HUGHES PROPERTIES  
 SUMMERLIN VILLAGE 7 - THE TRAILS - UNIT 2  
 CRESTDALE LANE  
 SEWER AND WATER  
 STA 36+00 - STA 41+00

SHEET  
**SW-5**  
 SHT 30 OF 48

ENGINEER  
**THE KEITH COMPANIES**  
 NEVADA  
 4085 5th INDUSTRIAL RD. LAS VEGAS, NV 89109 (702) 732-0300

1. ALL DIMENSIONS ARE IN FEET AND DECIMALS THEREOF UNLESS OTHERWISE SPECIFIED.  
 2. ALL DIMENSIONS ARE TO CENTERLINE UNLESS OTHERWISE SPECIFIED.  
 3. ALL DIMENSIONS ARE TO FACE UNLESS OTHERWISE SPECIFIED.  
 4. ALL DIMENSIONS ARE TO CENTERLINE UNLESS OTHERWISE SPECIFIED.  
 5. ALL DIMENSIONS ARE TO FACE UNLESS OTHERWISE SPECIFIED.  
 6. ALL DIMENSIONS ARE TO CENTERLINE UNLESS OTHERWISE SPECIFIED.  
 7. ALL DIMENSIONS ARE TO FACE UNLESS OTHERWISE SPECIFIED.  
 8. ALL DIMENSIONS ARE TO CENTERLINE UNLESS OTHERWISE SPECIFIED.  
 9. ALL DIMENSIONS ARE TO FACE UNLESS OTHERWISE SPECIFIED.  
 10. ALL DIMENSIONS ARE TO CENTERLINE UNLESS OTHERWISE SPECIFIED.

11.2.47

3078-4271-2