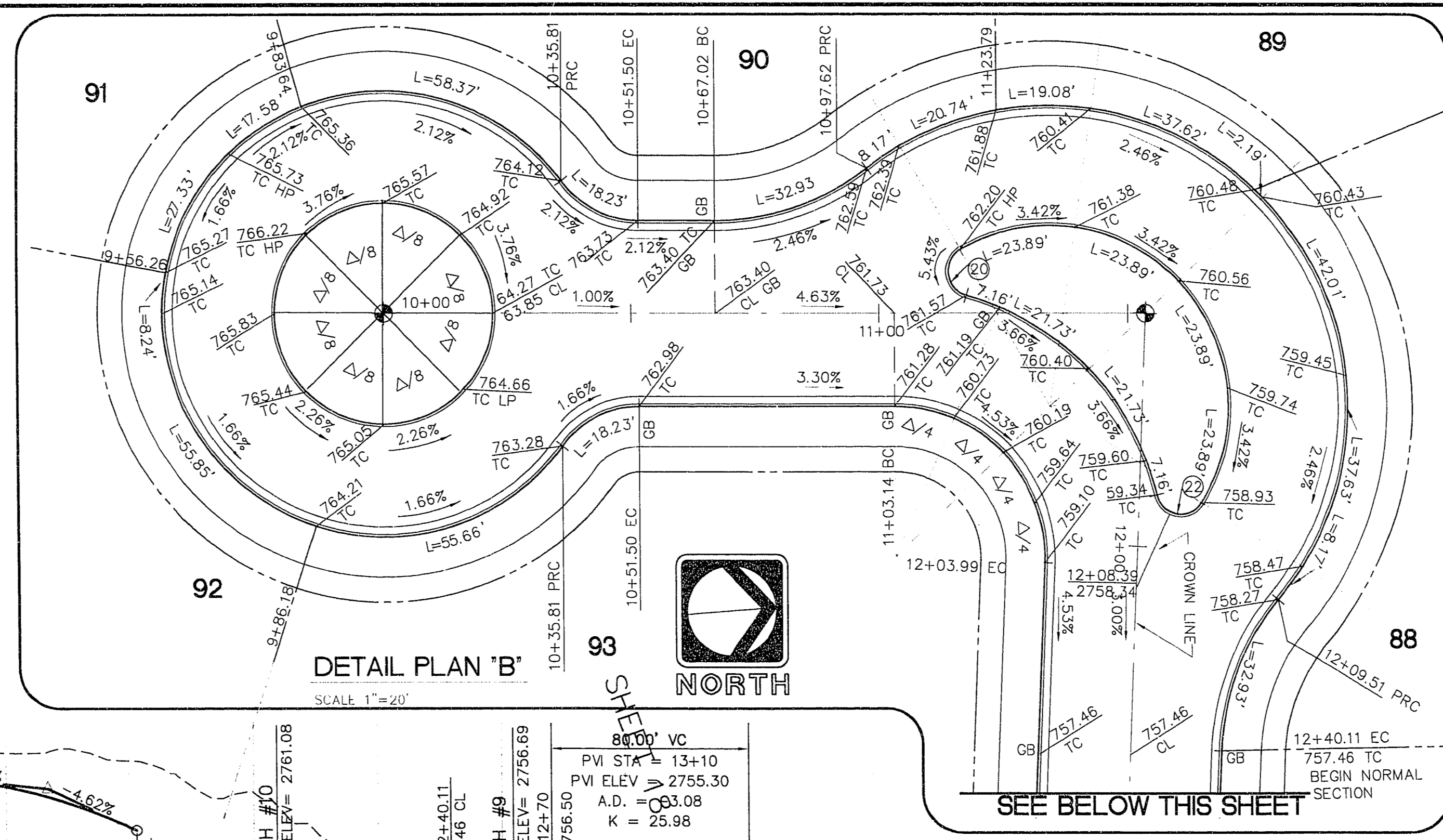
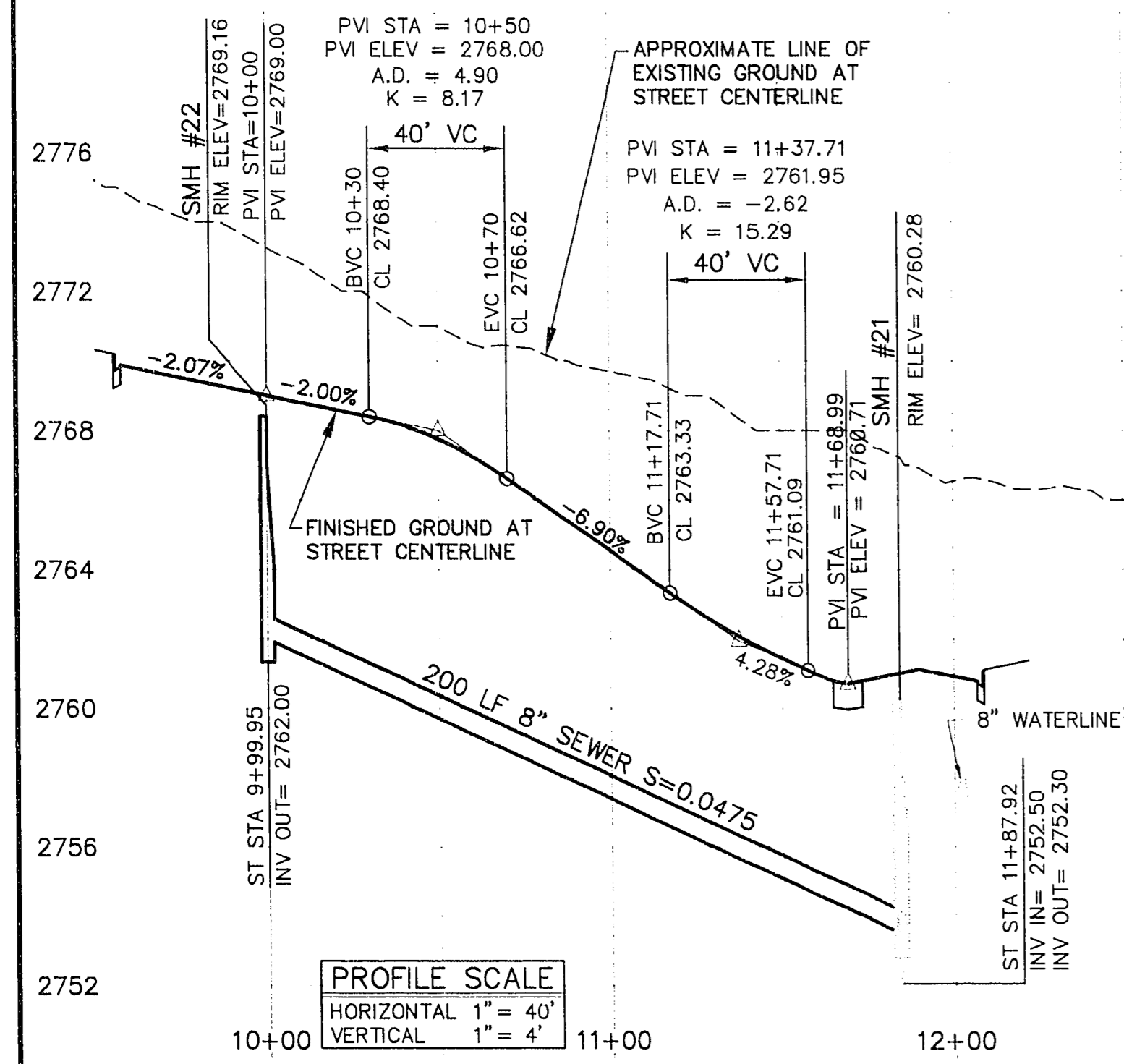


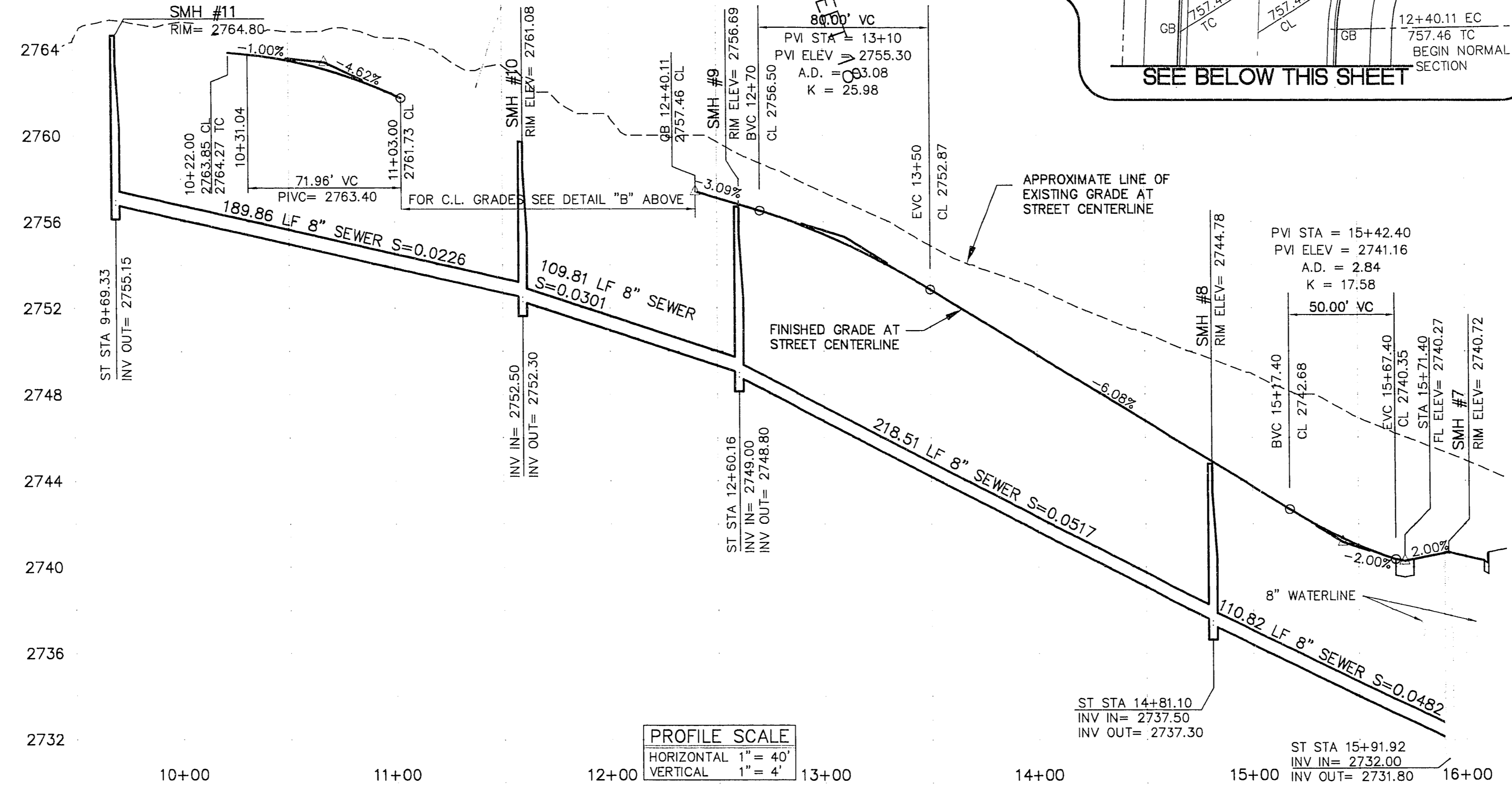
DETAIL PLAN 'A'
SCALE 1"=20'



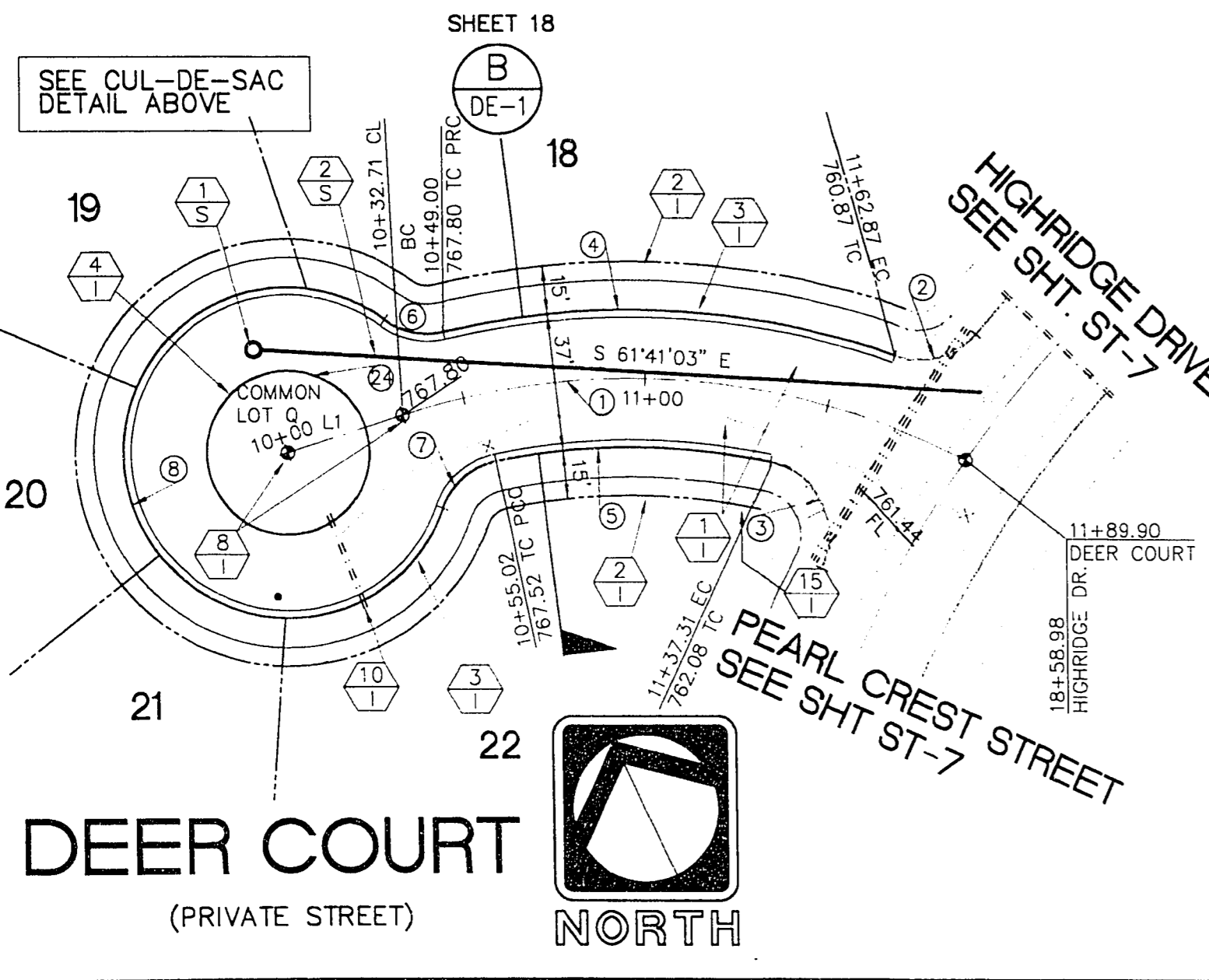
DETAIL PLAN 'B'
SCALE 1"=20'



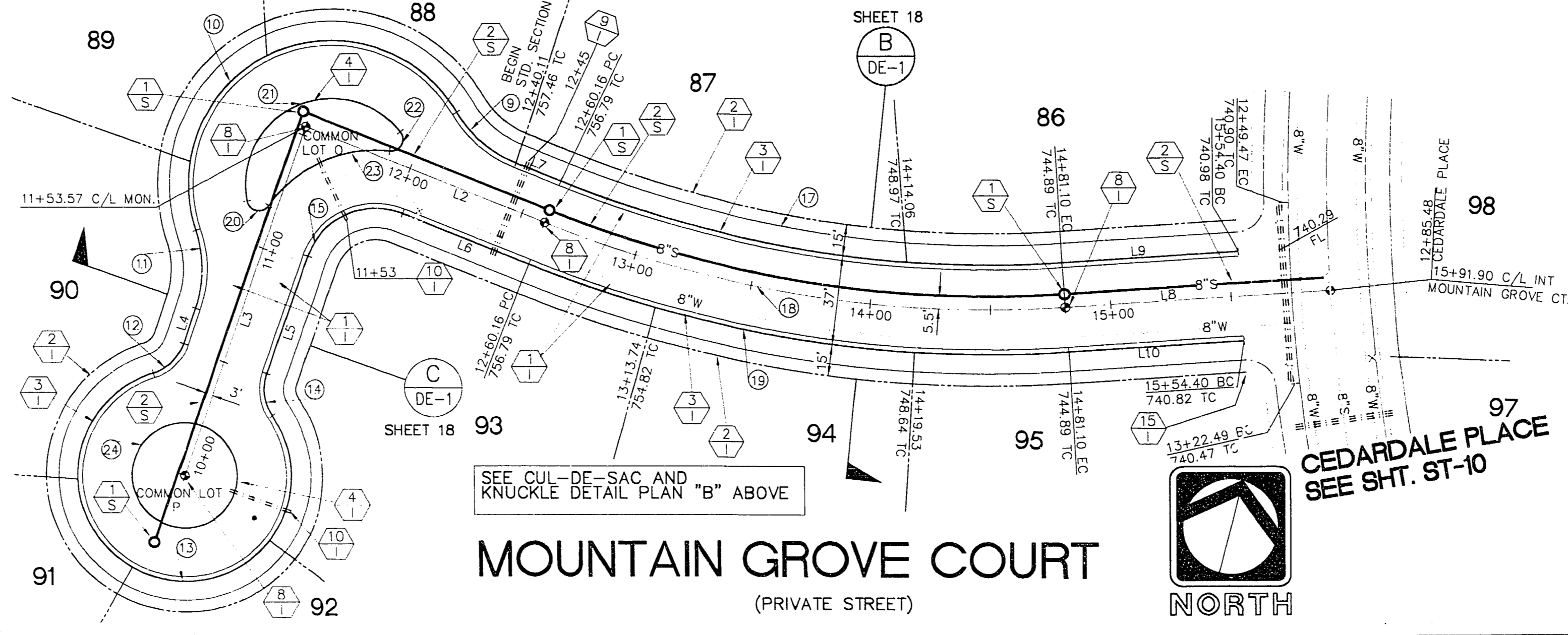
PROFILE SCALE
HORIZONTAL 1" = 40'
VERTICAL 1" = 4'



PROFILE SCALE
HORIZONTAL 1" = 40'
VERTICAL 1" = 4'



DEER COURT
(PRIVATE STREET)
NORTH



MOUNTAIN GROVE COURT
(PRIVATE STREET)
NORTH

CONSTRUCTION NOTES

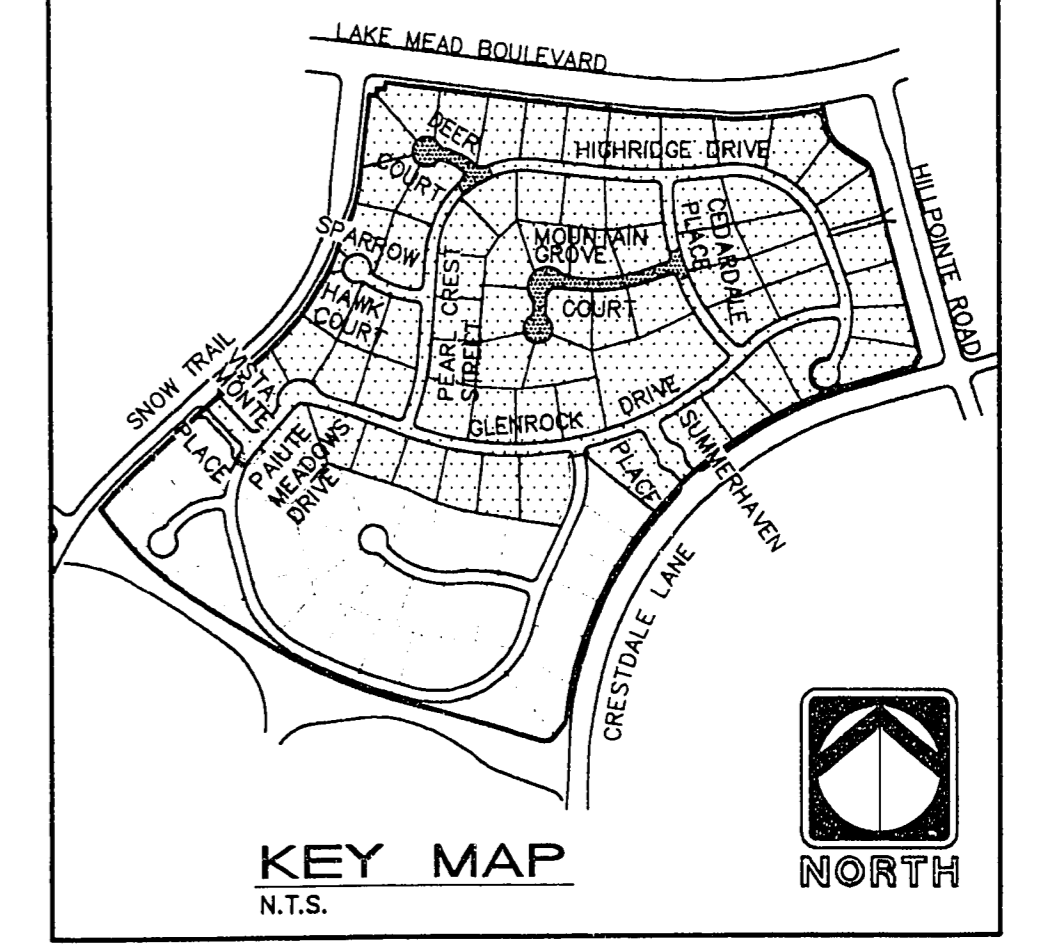
- STREET IMPROVEMENTS
- 1 CONSTRUCT 2" ASPHALT PAVEMENT WITH 4" TYPE II AGGREGATE BASE OVER 7" TYPE I AGGREGATE BASE
 - 2 CONSTRUCT CONCRETE SIDEWALK PER SUMMERLIN STANDARD DRAWING S-72
 - 3 CONSTRUCT 6" "L" TYPE CONCRETE CURB AND GUTTER PER SUMMERLIN STANDARD DRAWING S-47
 - 4 CONSTRUCT "A" TYPE CONCRETE ISLAND CURB PER SUMMERLIN STANDARD DRAWING S-50
 - 5 INSTALL TYPE III MONUMENT PER SUMMERLIN STANDARD DRAWING S-85
 - 6 INSTALL 1-6" AND 2-4" SDR 35 PVC IRRIGATION SLEEVES.
 - 7 INSTALL 2-4" SDR 35 PVC IRRIGATION SLEEVES.
 - 8 INSTALL 6" ST. NAME SIGN PER UNIFORM STD. DWG. CLARK COUNTY AREA STD. DWG. (250 N.I.C.)

- SEWER
- 1 INSTALL STANDARD 4' SEWER MANHOLE PER CLARK COUNTY SANITATION DISTRICT STANDARD DRAWINGS.
 - 2 INSTALL 8" PVC (SDR-35) SEWER LINE.
- NOTES:
1. ADD 2000 FEET TO ALL GRADES SHOWN ON PLAN VIEW
 2. ALL SEWER, WATER, AND STORM DRAIN SHOWN HEREON ARE PUBLIC UNLESS OTHERWISE NOTED.
 3. ALL CURVED SEWER REQUIRES LINE AND GRADE STAKES AT AN INTERVAL NOT TO EXCEED 25'.
 4. ALL STREETS ARE PUBLIC UTILITY EASEMENTS AND CITY OF LAS VEGAS SEWER EASEMENTS

CURVE NUMBERS ARE SHOWN (O) ON PLANS

CURVE DATA				
CURVE	RADIUS	LENGTH	TANGENT	DELTA
1	200.00'	157.19'	82.91'	45°01'54"
2	20.00'	23.96'	13.65'	68°37'47"
3	20.00'	36.60'	26.00'	104°51'29"
4	218.50'	124.41'	63.94'	32°37'20"
5	181.50'	75.06'	38.07'	23°41'30"
6	19.50'	16.94'	9.05'	49°46'57"
7	19.50'	20.03'	11.00'	58°50'22"
8	44.50'	222.83'	32.99'	286°53'51"
9	50.00'	32.93'	17.08'	37°43'46"
10	60.00'	175.60'	55.82'	167°41'10"
11	90.00'	32.93'	17.08'	37°43'46"
12	19.50'	18.23'	9.85'	53°34'35"
13	44.50'	223.02'	32.84'	287°09'10"
14	19.50'	18.23'	9.85'	53°34'35"
15	30.00'	48.29'	31.19'	92°13'38"
17	481.50'	212.77'	108.15'	25°19'05"
18	500.00'	220.94'	112.30'	25°19'05"
19	518.50'	229.12'	116.46'	25°19'05"
20	5.00'	11.75'	11.96'	134°36'59"
21	36.00'	95.56'	144.83'	152°04'58"
22	5.00'	11.75'	11.96'	134°36'59"
23	54.00'	57.79'	32.01'	61°18'56"
24	22.00'	138.23'	---	360°00'00"

LINE DATA		
LINE	DIRECTION	DISTANCE
L1	S 83°00'00" E	32.71'
L2	S 83°14'48" E	108.59'
L3	N 04°31'34" E	153.57'
L4	S 04°31'34" W	15.52'
L5	N 04°31'34" E	51.64'
L6	N 83°14'48" W	56.17'
L7	S 83°14'48" E	20.05'
L8	N 71°28'08" E	110.80'
L9	N 71°28'08" E	73.30'
L10	N 71°28'08" E	73.30'



KEY MAP
N.T.S.
NORTH

1 inch = 40 ft. 12-27-94 SHT 15 OF 27

ENGINEER

THE KEITH COMPANIES NEVADA
4062 SO. INDUSTRIAL RD. LAS VEGAS, NV 89103 (702) 739-0600

RECOMMENDED

DATE: 1-10-95

DESCRIPTION: DEER COURT 10+0000 - END MOUNTAIN GROVE 10+0000 - END

SHEET ST-9

1. SUMMERLIN TRAILS - MOUNTAIN GROVE DEER COURT AND MOUNTAIN GROVE PLAN AND PROFILE (PRIVATE STREETS) DEER COURT 10+0000 - END MOUNTAIN GROVE 10+0000 - END
 2. DATE: 1-10-95
 3. DRAWN BY: GARY T. BUSB
 4. CHECKED BY: GARY T. BUSB
 5. APPROVED BY: GARY T. BUSB
 6. PROJECT NO.: 1074-4371

11-19-221 1074-4371