

FINAL MAP OF SUMMERLIN VILLAGE 3 UNIT NO. 2 A PLANNED COMMUNITY

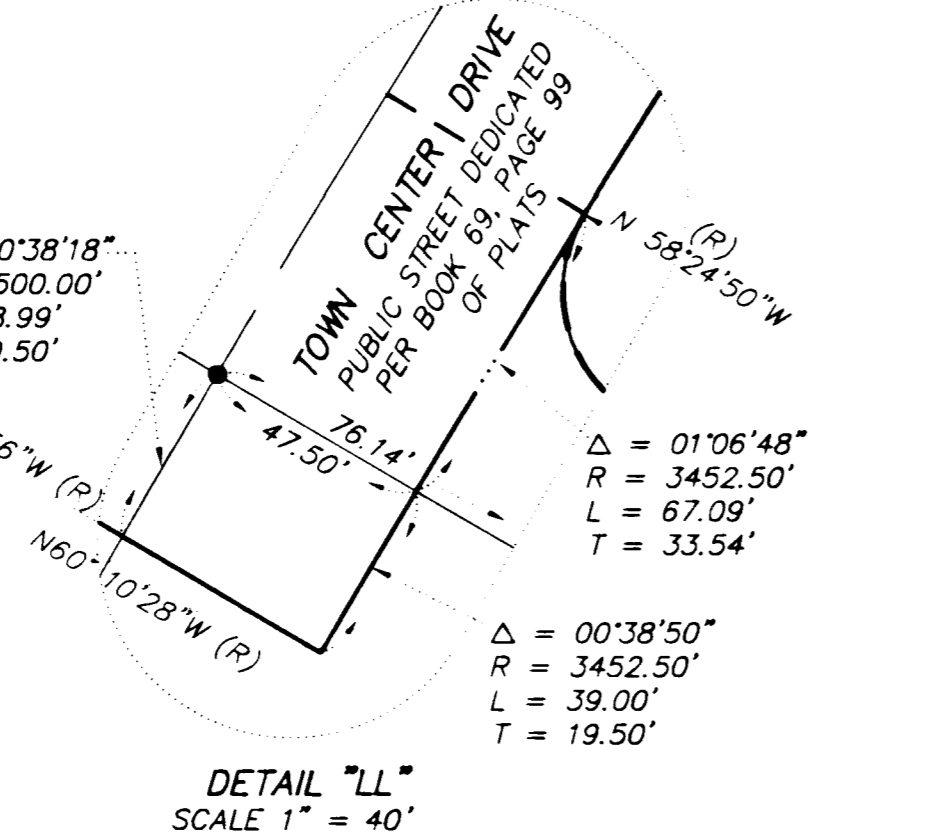
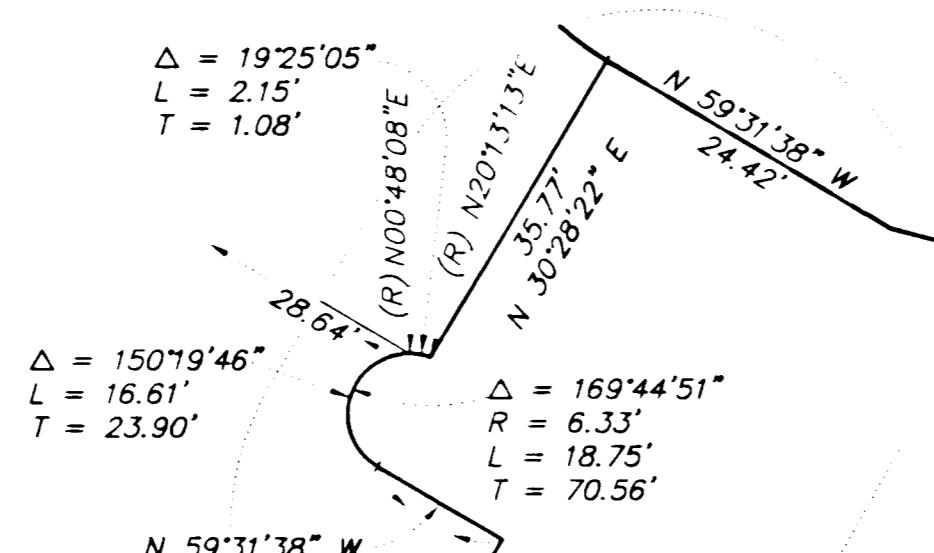
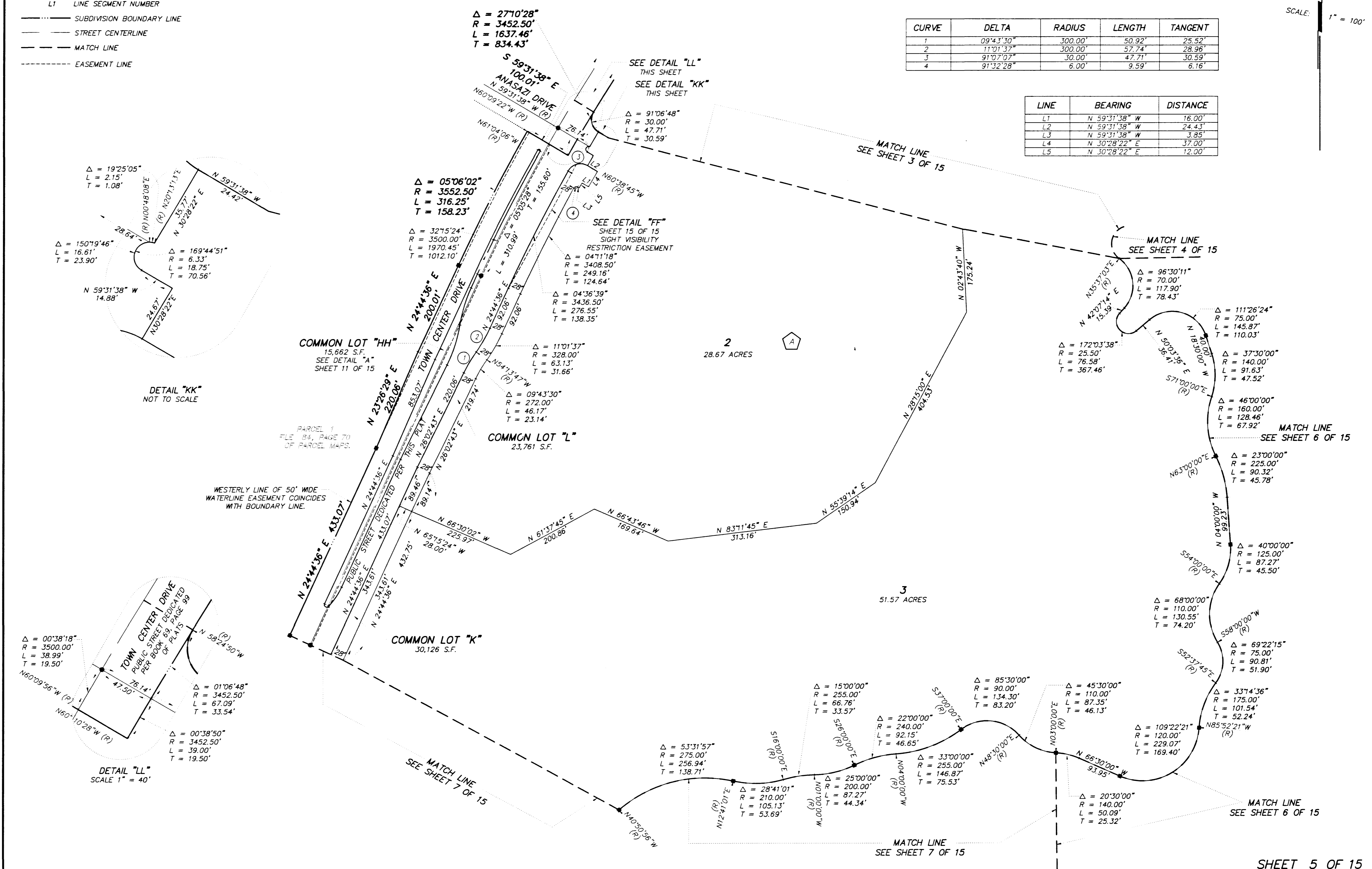
BEING A SUBDIVISION OF A PORTION OF PARCEL 3 AS SHOWN BY MAP THEREOF ON FILE IN FILE 82, PAGE 64 OF PARCEL MAPS AND A PORTION OF PARCEL 1 AS SHOWN BY MAP THEREOF ON FILE IN FILE 84, PAGE 70 OF PARCEL MAPS IN THE CLARK COUNTY RECORDER'S OFFICE, CLARK COUNTY, NEVADA, LYING WITHIN SECTION 30, TOWNSHIP 20 SOUTH, RANGE 60 EAST, AND WITHIN SECTIONS 25 AND 36, TOWNSHIP 20 SOUTH, RANGE 59 EAST, M.D.M., CITY OF LAS VEGAS, CLARK COUNTY, NEVADA

- LEGEND**
- SET 5/8" REBAR AND ALCAP STAMPED PLS. 9390 W/ALUMINUM REFERENCE TIES IN TOP OF CURB (UNLESS OTHERWISE NOTED)
 - SET 5/8" REBAR AND ALCAP STAMPED PLS. 9390
 - 2 LOT NUMBER
TOTAL LOTS = 6
TOTAL COMMON LOTS = 34
 - A BLOCK NUMBER
 - ① CURVE NUMBER
 - L1 LINE SEGMENT NUMBER
 - SUBDIVISION BOUNDARY LINE
 - STREET CENTERLINE
 - - - MATCH LINE
 - EASEMENT LINE

CURVE	DELTA	RADIUS	LENGTH	TANGENT
1	09°43'30"	300.00'	50.92'	25.52'
2	11°01'37"	300.00'	57.74'	28.96'
3	91°07'07"	30.00'	47.71'	30.59'
4	91°32'28"	6.00'	9.59'	6.16'

LINE	BEARING	DISTANCE
L1	N 59°31'38" W	16.00'
L2	N 59°31'38" W	24.43'
L3	N 59°31'38" W	3.85'
L4	N 30°28'22" E	37.00'
L5	N 30°28'22" E	12.00'

SCALE: 1" = 100'



62003.403

SHEET 5 OF 15

Book 14 Page 56
4444-2

3692

