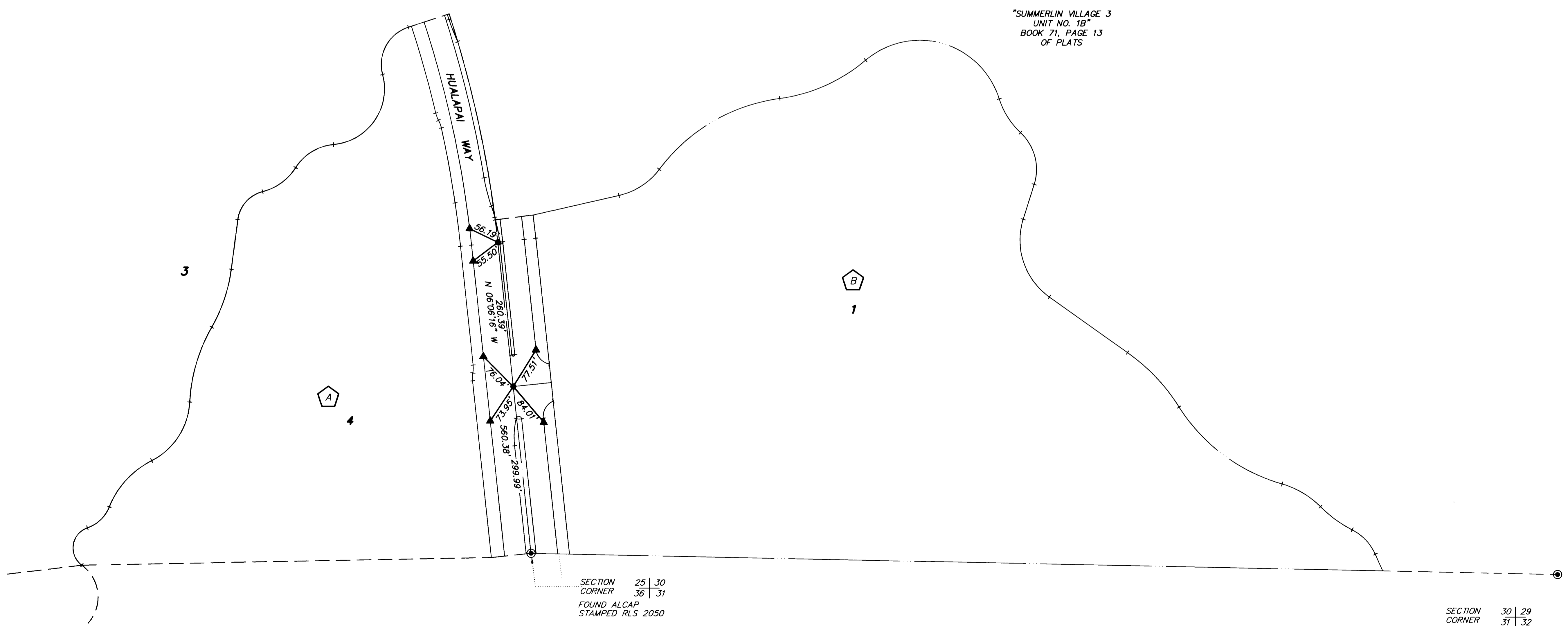


MONUMENT TIE MAP OF SUMMERLIN VILLAGE 3 UNIT NO. 2 A PLANNED COMMUNITY

BEING A SUBDIVISION OF A PORTION OF PARCEL 3 AS SHOWN BY MAP THEREOF ON FILE IN FILE 82, PAGE 64 OF PARCEL MAPS AND A PORTION OF PARCEL 1 AS SHOWN BY MAP THEREOF ON FILE IN FILE 84, PAGE 70 OF PARCEL MAPS IN THE CLARK COUNTY RECORDER'S OFFICE, CLARK COUNTY, NEVADA, LYING WITHIN SECTION 30, TOWNSHIP 20 SOUTH, RANGE 60 EAST, AND WITHIN SECTIONS 25 AND 36, TOWNSHIP 20 SOUTH, RANGE 59 EAST, M.D.M., CITY OF LAS VEGAS, CLARK COUNTY, NEVADA

- LEGEND**
- ▲ SET 2" ALUMINUM REFERENCE TIE IN TOP OF CURB, STAMPED P.L.S. 11174
 - SET 5/8" REBAR AND ALUM. CAP STAMPED P.L.S. 11174
 - 1 LOT NUMBER
 - ⬡ BLOCK NUMBER

SCALE: 1" = 100'



"SUMMERLIN VILLAGE 3
UNIT NO. 1B"
BOOK 71, PAGE 13
OF PLATS

SECTION 25 | 30
CORNER 36 | 31
FOUND ALCAP
STAMPED RLS 2050

SECTION 30 | 29
CORNER 31 | 32
FOUND LEAD AND
RLS 2050 BRASS TAB

SHEET 4 OF 15

62003.413

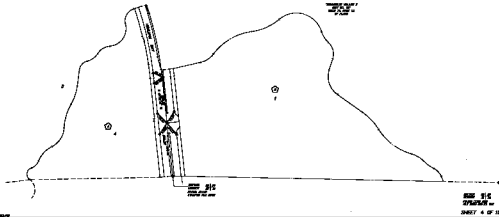
PLOTTED: 03-05-97

2188

MOVEMENT THE MAP OF
SUMMERLIN VILLAGE 3 UNIT NO. 2
 A PLANNED COMMUNITY

BEING A SUBDIVISION OF A PORTION OF PARCEL 2 AS SHOWN BY MAP THEREOF ON FILE IN FILE NO. PAGE 84 OF PARCEL MAPS AND A PORTION OF PARCEL 1 AS SHOWN BY MAP THEREOF ON FILE IN FILE NO. PAGE 20 OF PARCEL MAPS IN THE CLARK COUNTY RECORDER'S OFFICE, CLARK COUNTY, NEVADA, 1999 BEING SECTION 30, TOWNSHIP 20 SOUTH, RANGE 20 EAST AND BEING SECTIONS 30 AND 36, TOWNSHIP 20 SOUTH, RANGE 20 EAST, S.W.1/4, CITY OF LAS VEGAS, CLARK COUNTY, NEVADA

- LEGEND
- 10' CURB/STREETWAY L&P
 - 15' SIDEWALK
 - 1' LOT FRONT
 - 1' LOT WIDTH



SEE 210
 210/210
 SHEET 4 OF 15