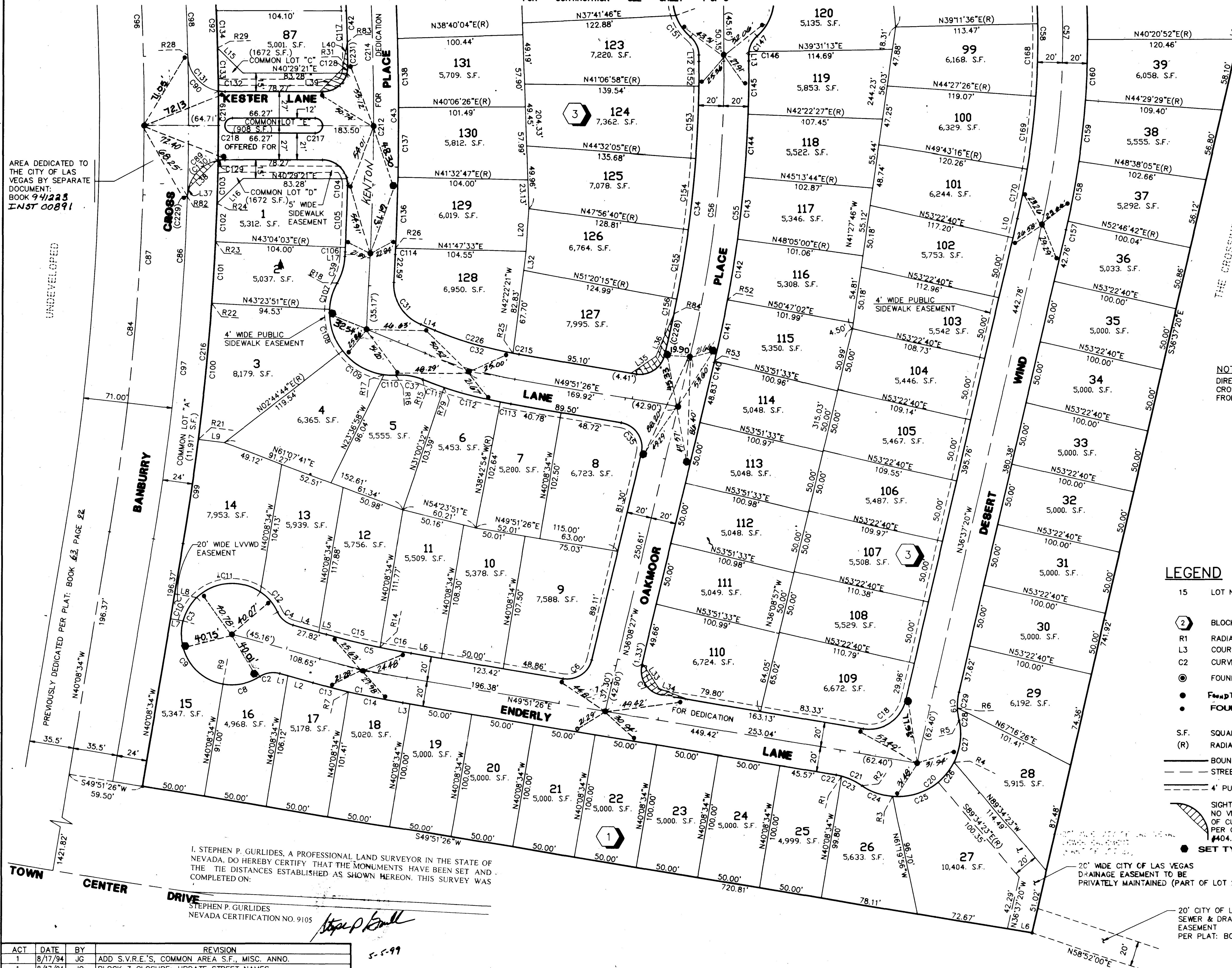


# WEST HILLS MONUMENTATION TIE MAP

BEING LOT 1 OF THE CROSSING AT SUMMERLIN VILLAGE 8 UNIT NO. 1 PHASE 3 PER SUBDIVISION PLAT: BOOK 63, PAGE 92  
 LOCATED IN THE NORTHEAST QUARTER (NE 1/4) OF SECTION 25, TOWNSHIP 20 SOUTH, RANGE 59 EAST, M.D.M., AND THE NORTHWEST QUARTER  
 (NW 1/4) OF SECTION 30, TOWNSHIP 20 SOUTH, RANGE 60 EAST, M.D.M., CITY OF LAS VEGAS, CLARK COUNTY, NEVADA

FOR CONTINUATION SEE SHEET 4 OF 5



AREA DEDICATED TO THE CITY OF LAS VEGAS BY SEPARATE DOCUMENT: BOOK 94223 INST 00891

THE CROSSING AT SUMMERLIN VILLAGE 8 UNIT NO. 1 PHASE 3 LOT 1 BOOK 63 PAGE 92

**NOTE**  
 DIRECT VEHICULAR ACCESS TO BANBURY CROSS DRIVE THROUGH COMMON LOT "A" FROM ADJUTING LOTS IS PROHIBITED.

SCALE: 1"=40'

### LEGEND

- 15 LOT NUMBER / RESIDENTIAL = 132  
COMMON ELEMENT LOT = 5  
TOTAL = 137
- 2 BLOCK NUMBER
- R1 RADIAL LINE NUMBER
- L3 COURSE NUMBER
- C2 CURVE NUMBER
- FOUND MONUMENT AS DESCRIBED
- FOUND TYPE III MONUMENT - AL. CAP "VTN PLS 8421"
- FOUND TYPE IV-A REFERENCE MONUMENTS - "PLS 8421"
- S.F. SQUARE FEET
- (R) RADIAL LINE
- BOUNDARY OF THIS SUBDIVISION
- - - STREET CENTERLINE
- - - 4' PUBLIC SIDEWALK EASEMENT
- ⌒ SIGHT VISIBILITY RESTRICTION EASEMENT: NO VIEW OBSTRUCTION OVER 30' ABOVE TOP OF CURB ALLOWED IN THE SHADED AREA. PER CITY OF LAS VEGAS DRAWING #404.1600.
- SET TYPE IV-A REFERENCE MONUMENTS - "VTN PLS 9105"

I, STEPHEN P. GURLIDES, A PROFESSIONAL LAND SURVEYOR IN THE STATE OF NEVADA, DO HEREBY CERTIFY THAT THE MONUMENTS HAVE BEEN SET AND THE TIE DISTANCES ESTABLISHED AS SHOWN HEREON. THIS SURVEY WAS COMPLETED ON:

STEPHEN P. GURLIDES  
 NEVADA CERTIFICATION NO. 9105

ACT	DATE	BY	REVISION
1	8/17/94	JG	ADD S.V.R.E.'S, COMMON AREA S.F., MISC. ANNO.
1	8/17/94	JG	BLOCK 3 CLOSURE; UPDATE STREET NAMES
2	8/29/94	JG	ADDRESS C.L.V. 2ND SURVEY REVIEW COMMENTS: (8/25/94)

W.O. 4652  
 SHEET 3 OF 5

058-4359

15623 S

BOOK 65 Page 76

