

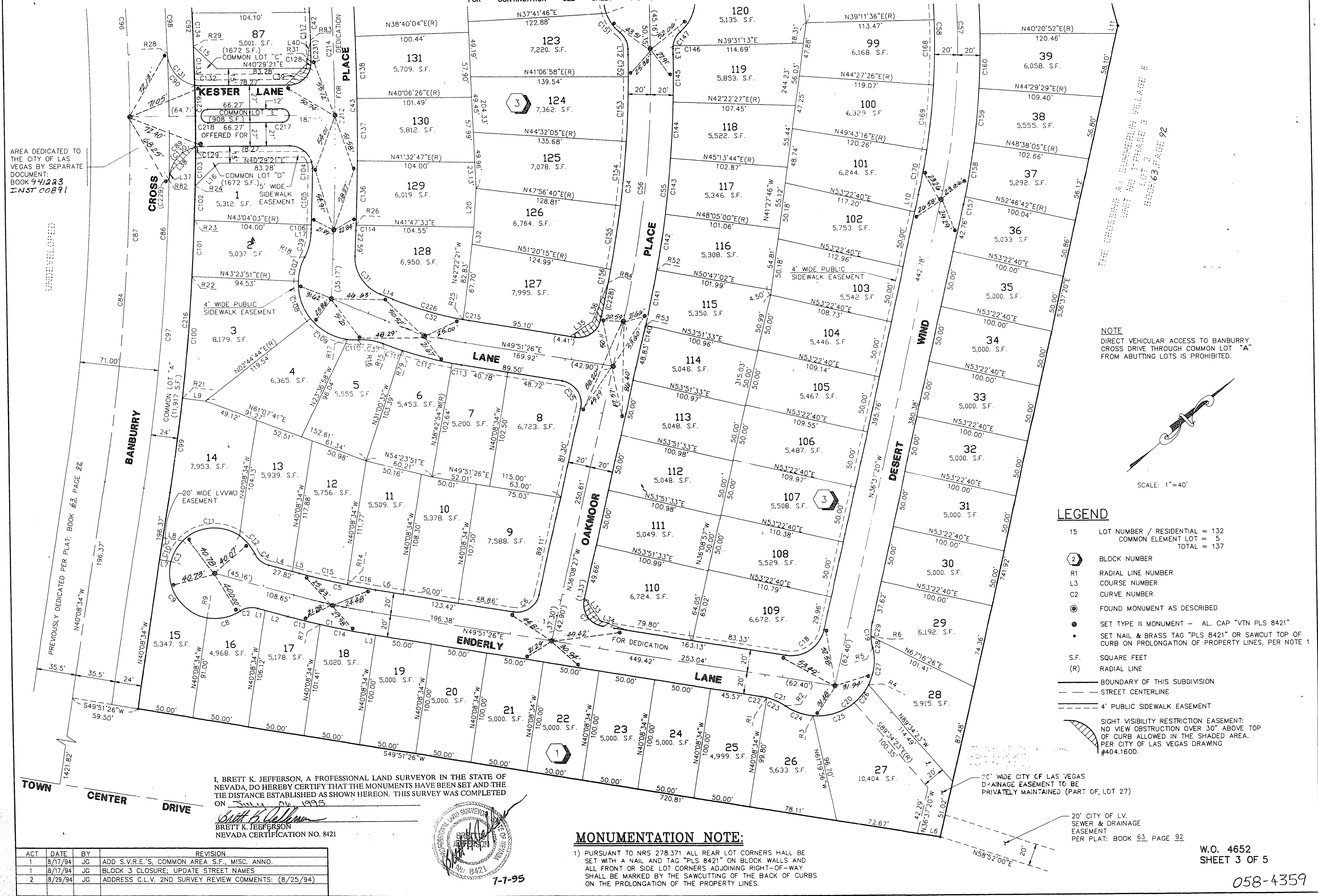
950112

00-700

# WEST HILLS MONUMENTATION TIE MAP

BEING LOT 1 OF THE CROSSING AT SUMMERLIN VILLAGE 8 UNIT NO. 1 PHASE 3 PER SUBDIVISION PLAT: BOOK 63, PAGE 92  
LOCATED IN THE NORTHEAST QUARTER (NE 1/4) OF SECTION 25, TOWNSHIP 20 SOUTH, RANGE 59 EAST, M.D.M., AND THE NORTHWEST QUARTER (NW 1/4) OF SECTION 30, TOWNSHIP 20 SOUTH, RANGE 60 EAST, M.D.M., CITY OF LAS VEGAS, CLARK COUNTY, NEVADA

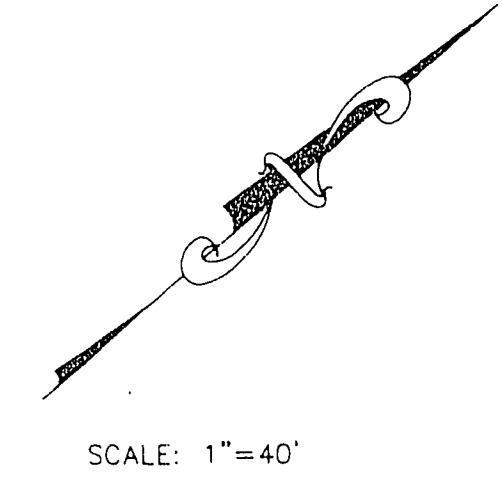
FOR CONTINUATION SEE SHEET 4 OF 5



AREA DEDICATED TO THE CITY OF LAS VEGAS BY SEPARATE DOCUMENT: BOOK 94, PAGE 223 INST 00891

THE CROSSING AT SUMMERLIN VILLAGE 8 UNIT NO. 1 PHASE 3 LOT 1 PER SUBDIVISION PLAT: BOOK 63, PAGE 92

NOTE  
DIRECT VEHICULAR ACCESS TO BANBURY CROSS DRIVE THROUGH COMMON LOT "A" FROM ADJUTING LOTS IS PROHIBITED.



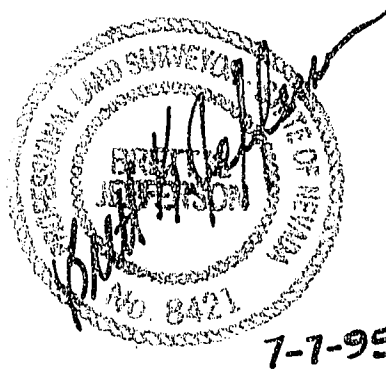
SCALE: 1"=40'

### LEGEND

- 15 LOT NUMBER / RESIDENTIAL = 132  
COMMON ELEMENT LOT = 5  
TOTAL = 137
- (2) BLOCK NUMBER
- R1 RADIAL LINE NUMBER
- L3 COURSE NUMBER
- C2 CURVE NUMBER
- FOUND MONUMENT AS DESCRIBED
- SET TYPE III MONUMENT - AL. CAP "VTN PLS 8421"
- SET NAIL & BRASS TAG "PLS 8421" OR SAWCUT TOP OF CURB ON PROLONGATION OF PROPERTY LINES, PER NOTE 1
- S.F. SQUARE FEET
- (R) RADIAL LINE
- BOUNDARY OF THIS SUBDIVISION
- - - STREET CENTERLINE
- - - 4' PUBLIC SIDEWALK EASEMENT
- ⌒ SIGHT VISIBILITY RESTRICTION EASEMENT: NO VIEW OBSTRUCTION OVER 30' ABOVE TOP OF CURB ALLOWED IN THE SHADED AREA. PER CITY OF LAS VEGAS DRAWING #404.1600.
- 20' WIDE CITY OF LAS VEGAS DRAINAGE EASEMENT TO BE PRIVATELY MAINTAINED (PART OF LOT 27)
- 20' CITY OF LV. SEWER & DRAINAGE EASEMENT PER PLAT: BOOK 63, PAGE 92

I, BRETT K. JEFFERSON, A PROFESSIONAL LAND SURVEYOR IN THE STATE OF NEVADA, DO HEREBY CERTIFY THAT THE MONUMENTS HAVE BEEN SET AND THE TIE DISTANCE ESTABLISHED AS SHOWN HEREON. THIS SURVEY WAS COMPLETED ON 8/29/94

*Brett K. Jefferson*  
BRETT K. JEFFERSON  
NEVADA CERTIFICATION NO. 8421



### MONUMENTATION NOTE:

1) PURSUANT TO NRS 278.371 ALL REAR LOT CORNERS SHALL BE SET WITH A NAIL AND TAG "PLS 8421" ON BLOCK WALLS AND ALL FRONT OR SIDE LOT CORNERS ADJOINING RIGHT-OF-WAY SHALL BE MARKED BY THE SAWCUTTING OF THE BACK OF CURBS ON THE PROLONGATION OF THE PROPERTY LINES.

ACT	DATE	BY	REVISION
1	8/17/94	JG	ADD S.V.R.E.'S, COMMON AREA S.F., MISC. ANNO.
1	8/17/94	JG	BLOCK 3 CLOSURE; UPDATE STREET NAMES
2	8/29/94	JG	ADDRESS C.L.V. 2ND SURVEY REVIEW COMMENTS: (8/25/94)

W.O. 4652 SHEET 3 OF 5

058-4359

12-6-92 Book 65 Page 76