

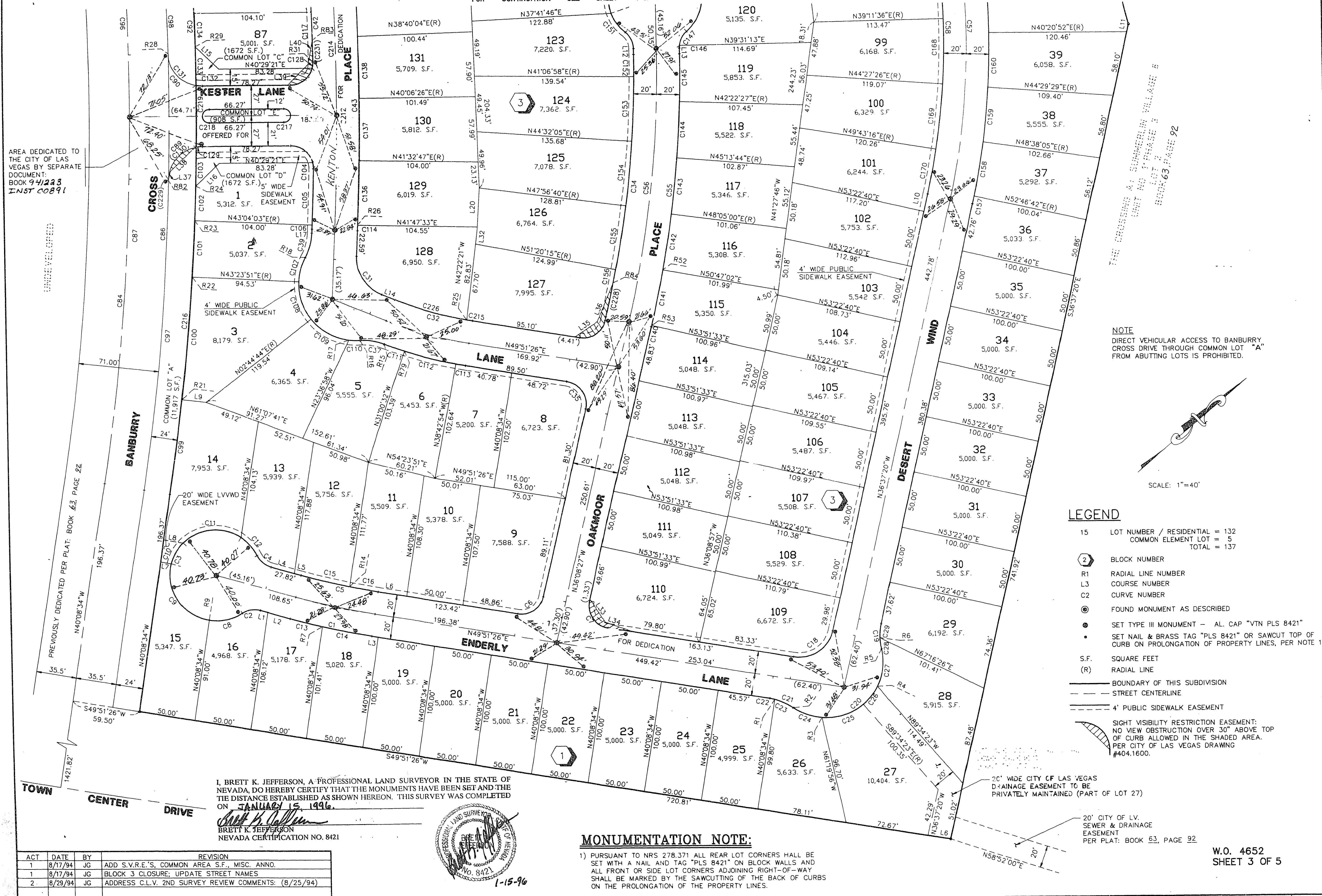
950110

C.C. 111

WEST HILLS MONUMENTATION TIE MAP

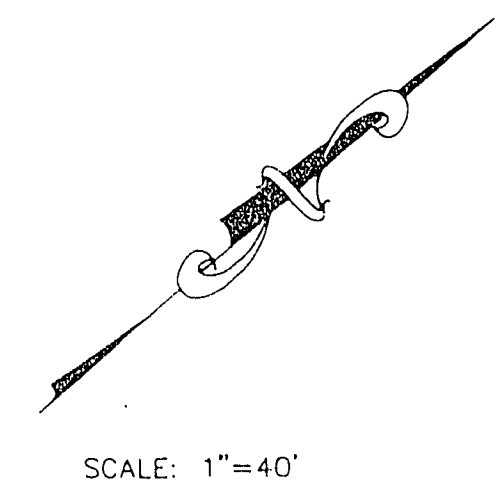
BEING LOT 1 OF THE CROSSING AT SUMMERLIN VILLAGE 8 UNIT NO. 1 PHASE 3 PER SUBDIVISION PLAT: BOOK 63, PAGE 92
LOCATED IN THE NORTHEAST QUARTER (NE 1/4) OF SECTION 25, TOWNSHIP 20 SOUTH, RANGE 59 EAST, M.D.M., AND THE NORTHWEST QUARTER (NW 1/4) OF SECTION 30, TOWNSHIP 20 SOUTH, RANGE 60 EAST, M.D.M., CITY OF LAS VEGAS, CLARK COUNTY, NEVADA

FOR CONTINUATION SEE SHEET 4 OF 5



AREA DEDICATED TO THE CITY OF LAS VEGAS BY SEPARATE DOCUMENT: BOOK 94/223 INST 00891

NOTE: DIRECT VEHICULAR ACCESS TO BANBURY CROSS DRIVE THROUGH COMMON LOT "A" FROM ADJUTING LOTS IS PROHIBITED.



LEGEND

- 15 LOT NUMBER / RESIDENTIAL = 132
COMMON ELEMENT LOT = 5
TOTAL = 137
- (2) BLOCK NUMBER
- R1 RADIAL LINE NUMBER
- L3 COURSE NUMBER
- C2 CURVE NUMBER
- FOUND MONUMENT AS DESCRIBED
- SET TYPE III MONUMENT - AL. CAP "VTN PLS 8421"
- SET NAIL & BRASS TAG "PLS 8421" OR SAWCUT TOP OF CURB ON PROLONGATION OF PROPERTY LINES, PER NOTE 1
- S.F. SQUARE FEET
- (R) RADIAL LINE
- BOUNDARY OF THIS SUBDIVISION
- STREET CENTERLINE
- 4' PUBLIC SIDEWALK EASEMENT
- SIGHT VISIBILITY RESTRICTION EASEMENT: NO VIEW OBSTRUCTION OVER 30' ABOVE TOP OF CURB ALLOWED IN THE SHADED AREA. PER CITY OF LAS VEGAS DRAWING #404.1600.
- 20' WIDE CITY OF LAS VEGAS SEWER & DRAINAGE EASEMENT TO BE PRIVATELY MAINTAINED (PART OF LOT 27)
- 20' CITY OF LV. SEWER & DRAINAGE EASEMENT PER PLAT: BOOK 63, PAGE 92

I, BRETT K. JEFFERSON, A PROFESSIONAL LAND SURVEYOR IN THE STATE OF NEVADA, DO HEREBY CERTIFY THAT THE MONUMENTS HAVE BEEN SET AND THE TIE DISTANCE ESTABLISHED AS SHOWN HEREON. THIS SURVEY WAS COMPLETED ON JANUARY 15, 1996.

Brett K. Jefferson
BRETT K. JEFFERSON
NEVADA CERTIFICATION NO. 8421



MONUMENTATION NOTE:

1) PURSUANT TO NRS 278.371 ALL REAR LOT CORNERS SHALL BE SET WITH A NAIL AND TAG "PLS 8421" ON BLOCK WALLS AND ALL FRONT OR SIDE LOT CORNERS ADJOINING RIGHT-OF-WAY SHALL BE MARKED BY THE SAWCUTTING OF THE BACK OF CURBS ON THE PROLONGATION OF THE PROPERTY LINES.

ACT	DATE	BY	REVISION
1	8/17/94	JG	ADD S.V.R.E.'S, COMMON AREA S.F., MISC. ANNO.
1	8/17/94	JG	BLOCK 3 CLOSURE; UPDATE STREET NAMES
2	8/29/94	JG	ADDRESS C.L.V. 2ND SURVEY REVIEW COMMENTS: (8/25/94)

12620 Book 65 Page 76

W.O. 4652
SHEET 3 OF 5