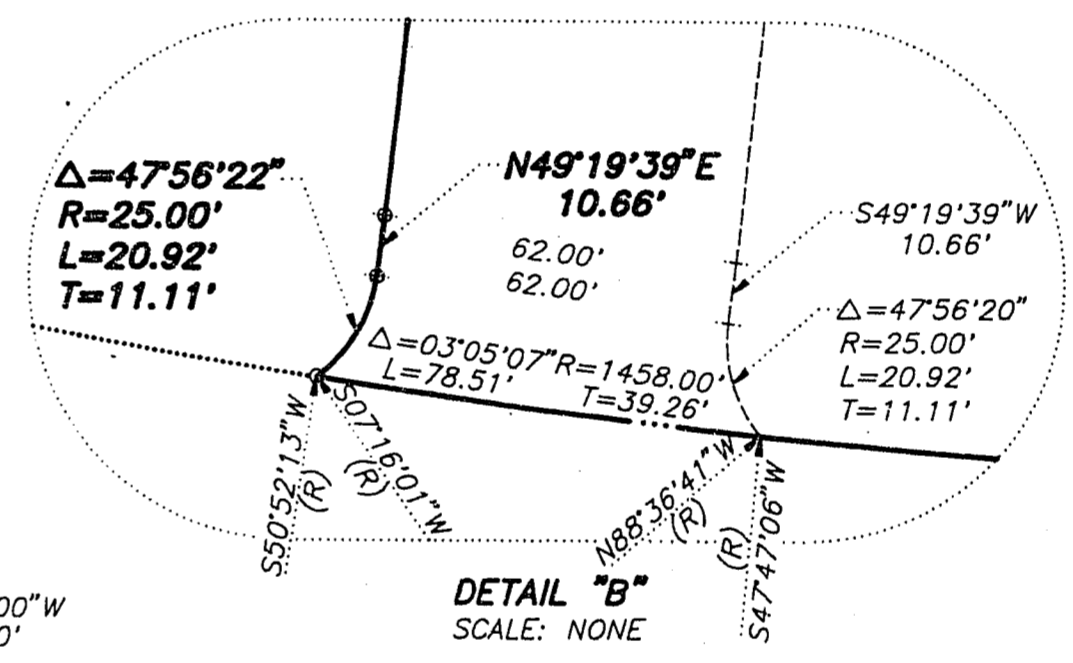
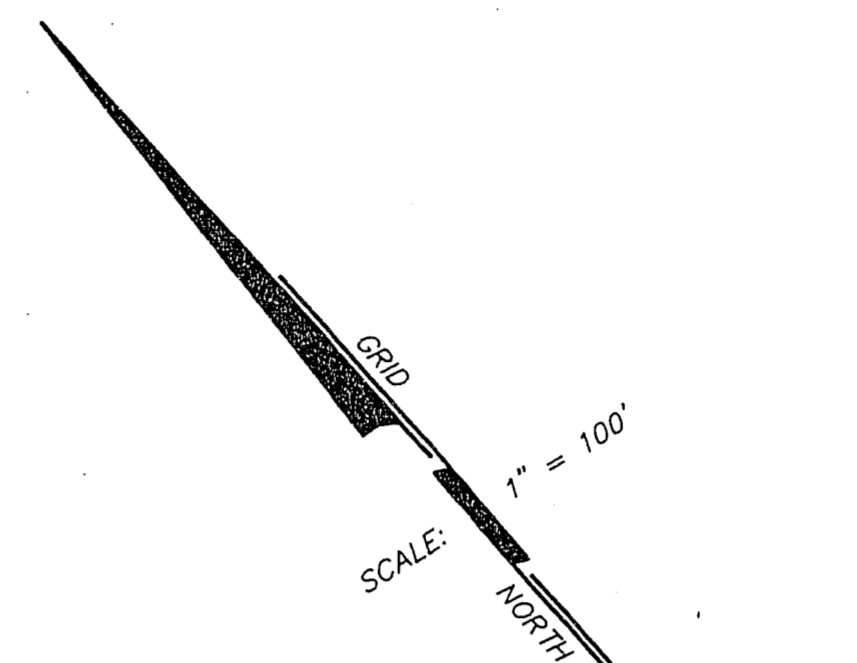
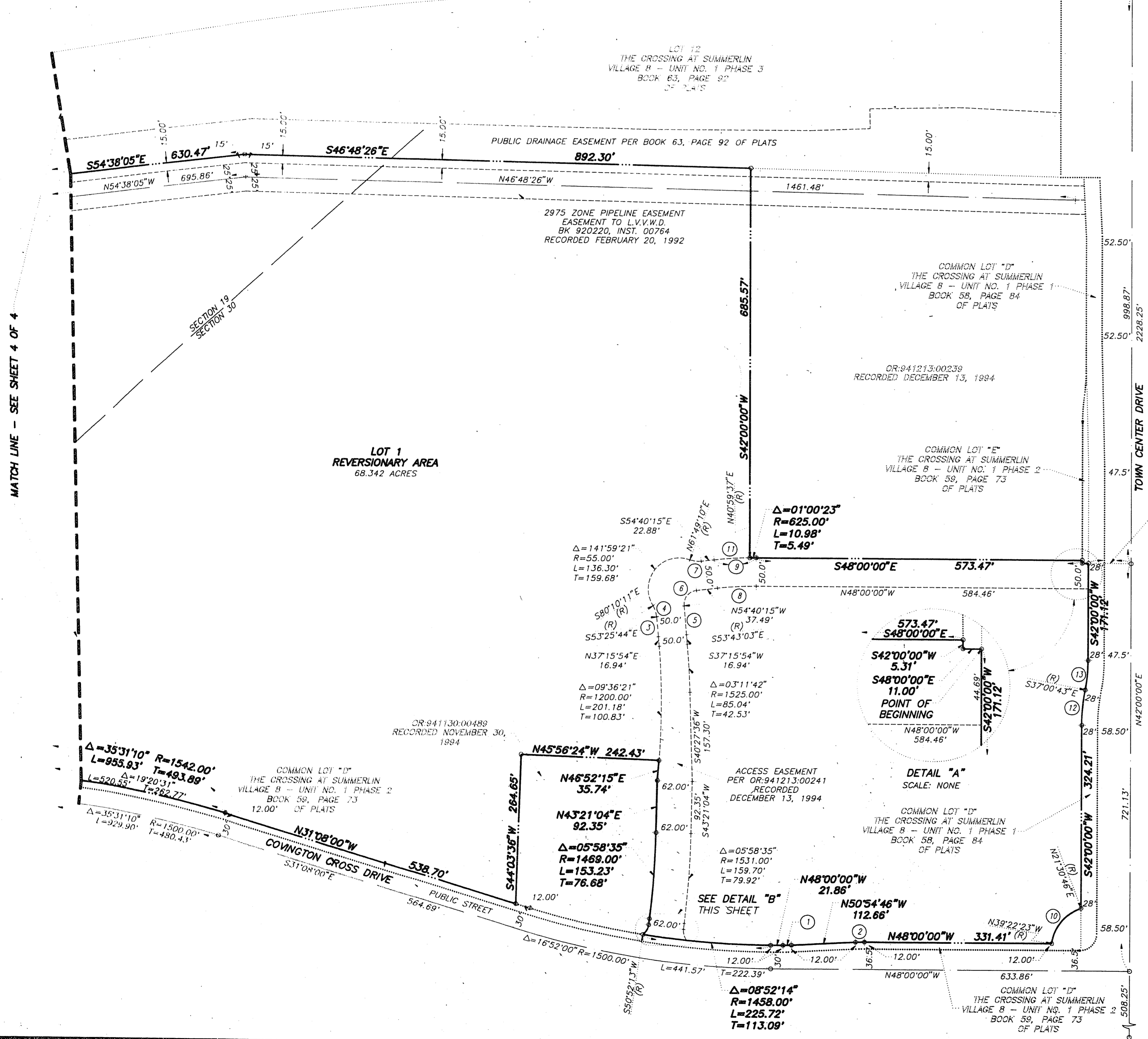


17-17-106 C1735

REVERSIONARY MAP OF A PORTION OF LOT 2 OF THE CROSSING BUSINESS CENTER AND LOT 10 OF THE CROSSING AT SUMMERLIN VILLAGE 8 - UNIT 1 PHASE 3

FOR THE PURPOSE OF REVERTING TO ACREAGE A PORTION OF LOT 2 IN BLOCK B OF THE "THE CROSSING BUSINESS CENTER" AS SHOWN BY MAP THEREOF ON FILE IN BOOK 62, PAGE 90 OF PLATS IN THE CLARK COUNTY RECORDER'S OFFICE, CLARK COUNTY, NEVADA AND ALL OF LOT 10 IN BLOCK D OF "THE CROSSING AT SUMMERLIN VILLAGE 8 - UNIT 1 PHASE 3" AS SHOWN BY MAP ON FILE IN BOOK 63, PAGE 92 OF PLATS IN THE CLARK COUNTY RECORDER'S OFFICE, CLARK COUNTY, NEVADA, LYING WITHIN SECTIONS 24 AND 25, TOWNSHIP 20 SOUTH, RANGE 59 EAST, AND SECTIONS 19 AND 30, TOWNSHIP 20 SOUTH, RANGE 60 EAST, M.D.M., CITY OF LAS VEGAS, CLARK COUNTY, NEVADA



CURVE	DELTA	RADIUS	LENGTH	TANGENT
1	02°54'46"	288.00'	14.64'	7.32'
2	02°54'46"	312.00'	15.86'	7.93'
3	00°41'38"	2930.00'	35.48'	17.74'
4	26°44'27"	45.00'	21.00'	10.70'
5	00°58'57"	2980.00'	51.10'	25.55'
6	89°02'48"	25.00'	38.85'	24.59'
7	26°29'26"	45.00'	20.81'	10.59'
8	06°40'15"	575.00'	66.95'	33.51'
9	06°40'15"	625.00'	72.77'	36.42'
10	60°53'09"	80.00'	85.01'	47.02'
11	05°39'52"	625.00'	61.79'	30.92'
12	10°59'17"	328.00'	62.90'	31.55'
13	10°59'17"	272.00'	52.16'	26.16'

LEGEND

- REFERENCE POINT
- LOT 1 LOT NUMBER
- ① CURVE NUMBER
- REVERSIONARY BOUNDARY LINE
- STREET CENTERLINE
- EASEMENT LINE
- MATCH LINE

620.480B