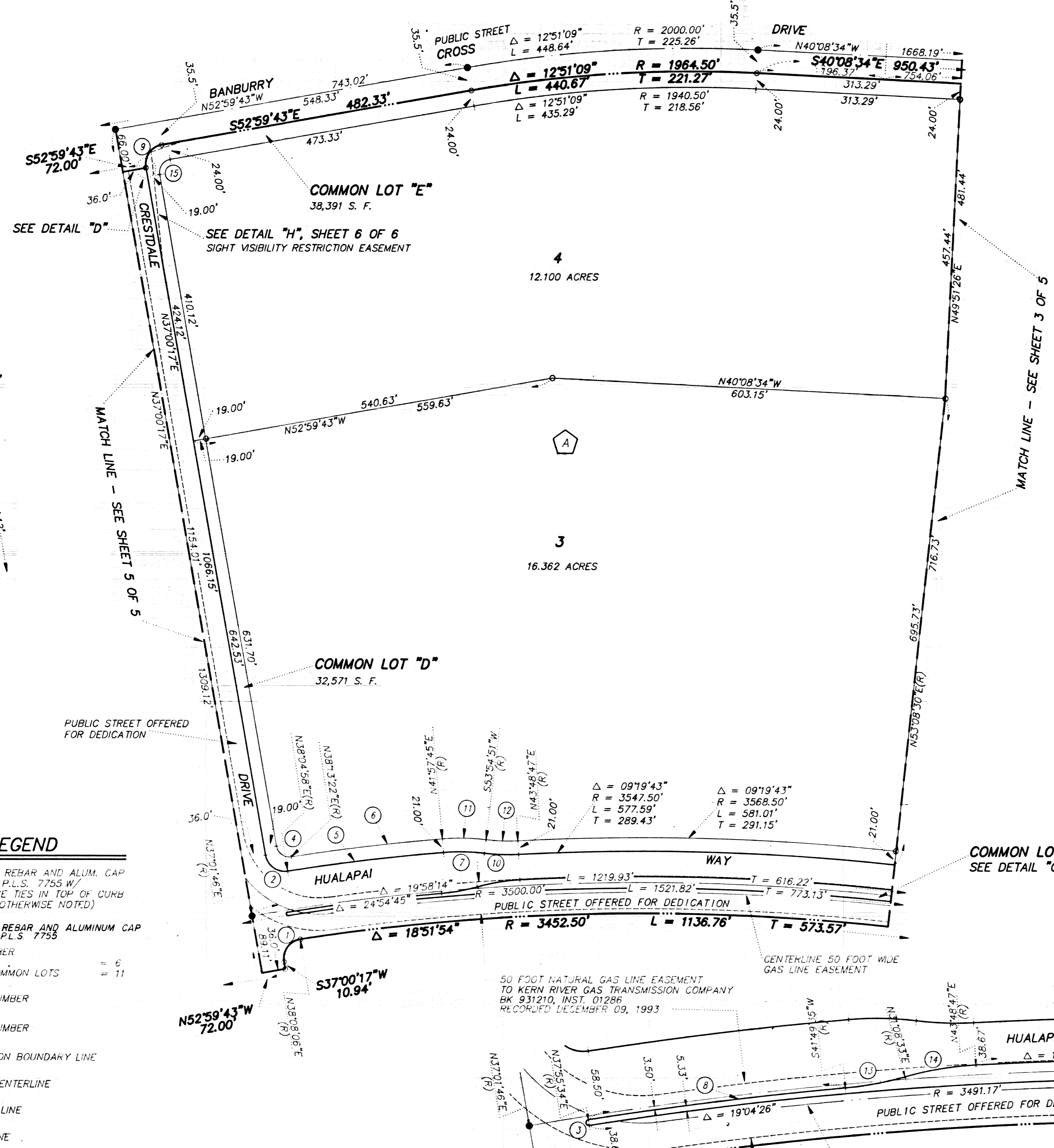
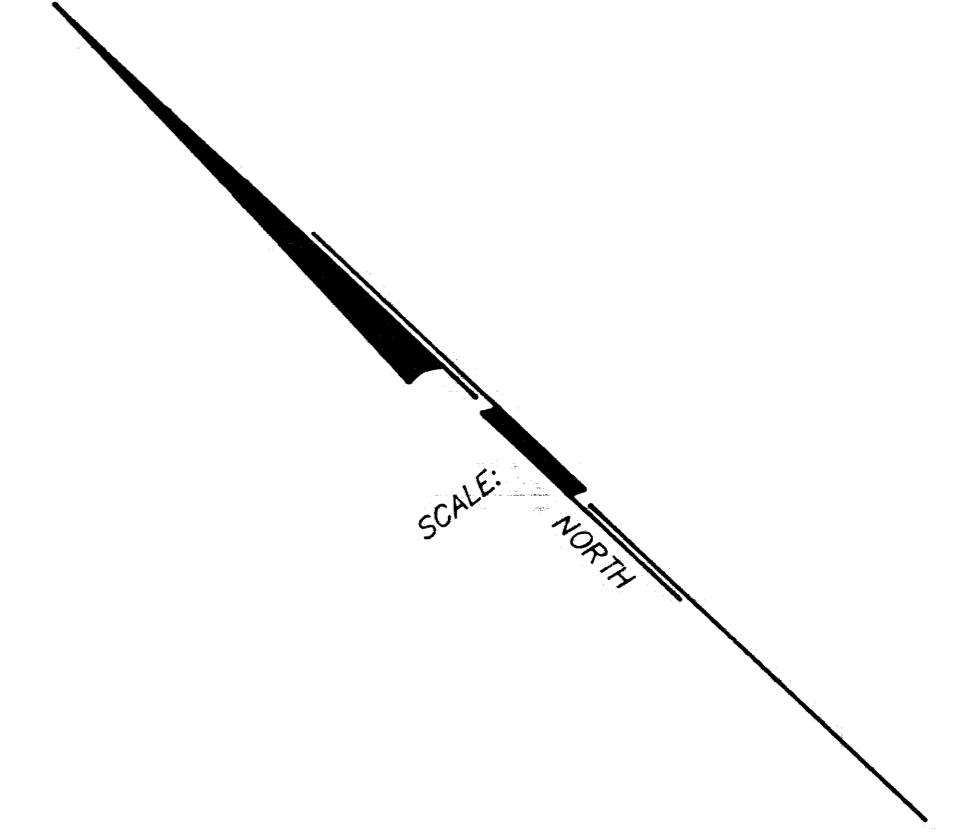


17-17-101

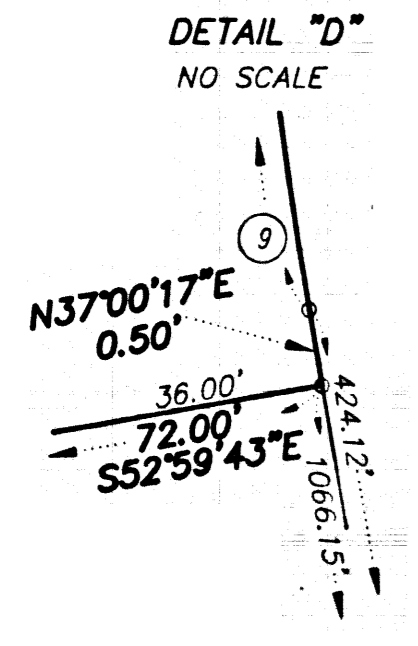
# FINAL MAP OF THE CROSSING AT SUMMERLIN VILLAGE 8 UNIT NO. 2

A PLANNED COMMUNITY

BEING A SUBDIVISION OF A PORTION OF SECTION 25, TOWNSHIP 20 SOUTH, RANGE 59 EAST, M.D.M.,  
AND A PORTION OF SECTION 30, TOWNSHIP 20 SOUTH, RANGE 60 EAST, M.D.M., CITY OF LAS VEGAS, CLARK COUNTY, NEVADA



CURVE	DELTA	RADIUS	LENGTH	TANGENT
1	91°07'49"	30.00'	47.72'	30.60'
2	88°55'19"	30.00'	46.56'	29.44'
3	180°00'00"	2.66'	8.36'	---
4	88°46'55"	20.00'	30.99'	19.58'
5	03°52'47"	3558.50'	240.96'	120.53'
6	03°44'23"	3579.50'	233.64'	116.86'
7	11°57'06"	300.00'	62.58'	31.40'
8	03°54'01"	3496.50'	238.02'	119.05'
9	90°00'00"	30.00'	47.12'	30.00'
10	10°06'04"	300.00'	52.89'	26.51'
11	11°57'07"	321.00'	66.96'	33.60'
12	10°06'04"	279.00'	49.19'	24.66'
13	10°41'02"	300.00'	55.94'	28.05'
14	12°40'14"	300.00'	66.34'	33.31'
15	90°00'00"	20.00'	31.42'	20.00'



- LEGEND**
- SET 5/8" REBAR AND ALLUM. CAP STAMPED P.L.S. 7755 W/ REFERENCE TIES IN TOP OF CURVE (UNLESS OTHERWISE NOTED)
  - SET 5/8" REBAR AND ALUMINUM CAP STAMPED P.L.S. 7755
  - 4 LOT NUMBER  
TOTAL = 6  
TOTAL COMMON LOTS = 11
  - ⬡ BLOCK NUMBER
  - ① CURVE NUMBER
  - SUBDIVISION BOUNDARY LINE
  - STREET CENTERLINE
  - EASEMENT LINE
  - MATCH LINE

50 FOOT NATURAL GAS LINE EASEMENT TO KERN RIVER GAS TRANSMISSION COMPANY BK 931210, INST. 01286 RECORDED DECEMBER 09, 1993

DETAIL "C" SCALE 1" = 60'