

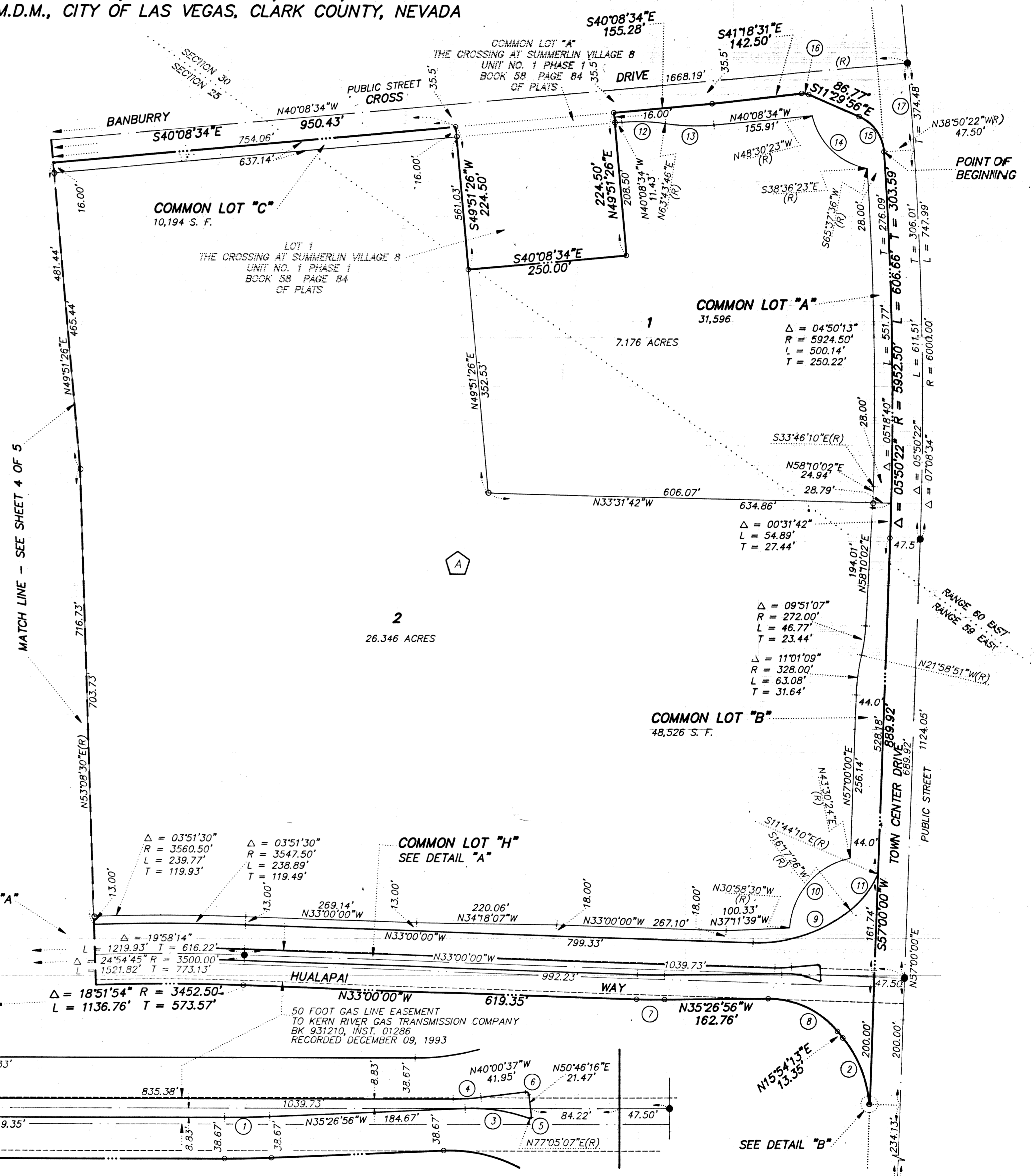
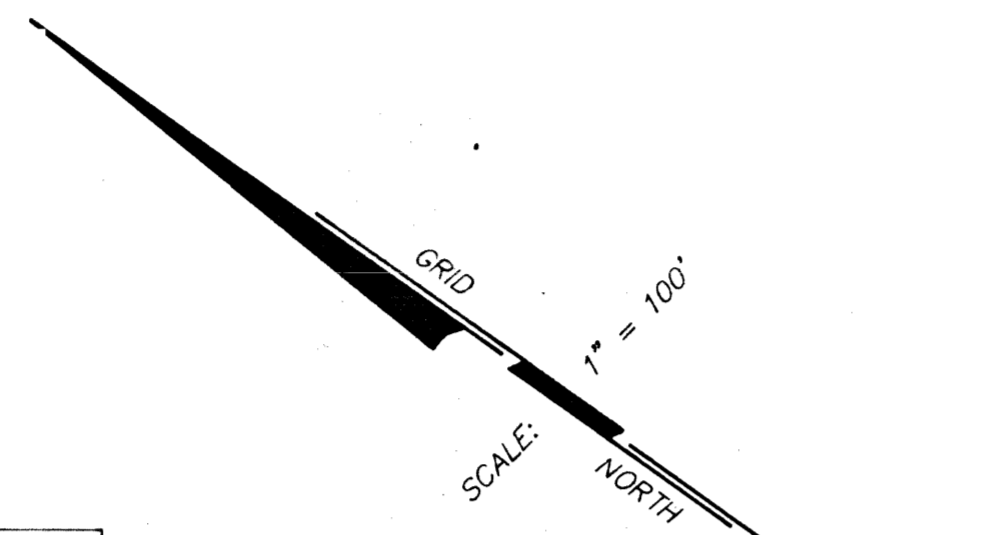
17-17-180

FINAL MAP OF THE CROSSING AT SUMMERLIN VILLAGE 8 UNIT NO. 2

A PLANNED COMMUNITY

BEING A SUBDIVISION OF A PORTION OF SECTION 25, TOWNSHIP 20 SOUTH, RANGE 59 EAST, M.D.M.,
AND A PORTION OF SECTION 30, TOWNSHIP 20 SOUTH, RANGE 60 EAST, M.D.M., CITY OF LAS VEGAS, CLARK COUNTY, NEVADA

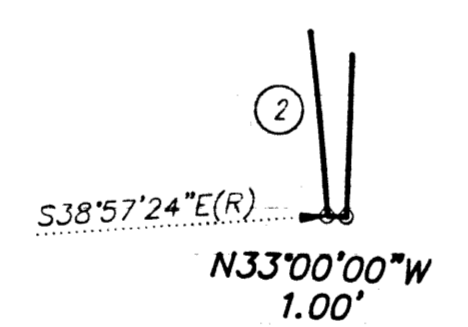
CURVE	DELTA	RADIUS	LENGTH	TANGENT
1	02°26'56"	1000.00'	42.74'	21.37'
2	35°08'23"	185.16'	113.56'	58.63'
3	22°32'03"	158.00'	62.14'	31.48'
4	07°00'37"	215.00'	26.31'	13.17'
5	116°18'51"	1.00'	2.03'	1.61'
6	90°46'53"	3.00'	4.75'	3.04'
7	02°26'56"	1038.67'	44.39'	22.20'
8	51°21'09"	140.00'	125.48'	67.31'
9	40°42'34"	233.00'	165.55'	86.44'
10	74°28'54"	120.00'	155.99'	91.22'
11	28°01'36"	146.34'	71.58'	36.52'
12	13°52'20"	284.00'	68.76'	34.55'
13	13°52'20"	316.00'	76.51'	38.44'
14	65°52'01"	110.00'	126.46'	71.25'
15	62°39'34"	65.00'	71.08'	39.57'
16	29°48'35"	22.00'	11.45'	5.96'
17	01°18'12"	6000.00'	136.48'	68.25'



LEGEND

- SET 5/8" REBAR AND ALUM. CAP STAMPED P.L.S. 7755 W/ REFERENCE TIES IN TOP OF CURVE (UNLESS OTHERWISE NOTED)
- SET 5/8" REBAR AND ALUMINUM CAP STAMPED P.L.S. 7755
- 1 LOT NUMBER
TOTAL = 6
TOTAL COMMON LOTS = 11
- A BLOCK NUMBER
- ① CURVE NUMBER
- SUBDIVISION BOUNDARY LINE
- STREET CENTERLINE
- EASEMENT LINE
- MATCH LINE

DETAIL "B"
NO SCALE



DETAIL "A"
SCALE 1" = 60'

