

# FINAL MAP OF THE CROSSING AT SUMMERLIN VILLAGE 8 UNIT NO. 1 PHASE 3

## A PLANNED COMMUNITY

BEING A SUBDIVISION OF A PORTION OF SECTIONS 24 AND 25, TOWNSHIP 20 SOUTH, RANGE 59 EAST, M.D.M., AND A PORTION OF SECTIONS 19 AND 30, TOWNSHIP 20 SOUTH, RANGE 60 EAST, M.D.M., CITY OF LAS VEGAS, CLARK COUNTY, NEVADA

CURVE	DELTA	RADIUS	LENGTH	TANGENT
1	077°33'	281.00'	35.77'	17.91'
2	077°33'	300.00'	38.18'	19.12'
3	12°06'54"	319.00'	67.45'	33.85'
4	12°06'54"	300.00'	63.43'	31.84'
5	90°00'00"	20.00'	31.42'	20.00'
6	90°00'00"	30.00'	47.12'	30.00'
7	147°14'	708.00'	176.96'	88.94'
8	05°41'58"	708.00'	70.43'	35.24'
9	08°37'17"	708.00'	106.53'	53.37'
10	90°00'00"	18.00'	28.27'	18.00'
11	20°57'43"	354.00'	129.51'	65.49'
12	20°57'43"	324.00'	118.54'	59.94'
13	20°57'43"	267.00'	97.68'	49.39'
14	25°01'21"	250.00'	109.18'	55.48'
15	25°01'21"	280.00'	122.28'	62.13'
16	25°01'21"	337.00'	147.18'	74.78'

PARCEL 1  
FILE 74, PAGE 14  
OF PARCEL MAPS.

50 FOOT GAS LINE EASEMENT  
TO KERN RIVER GAS TRANSMISSION COMPANY  
BK 931210, INST. 01286  
RECORDED DECEMBER 09, 1993

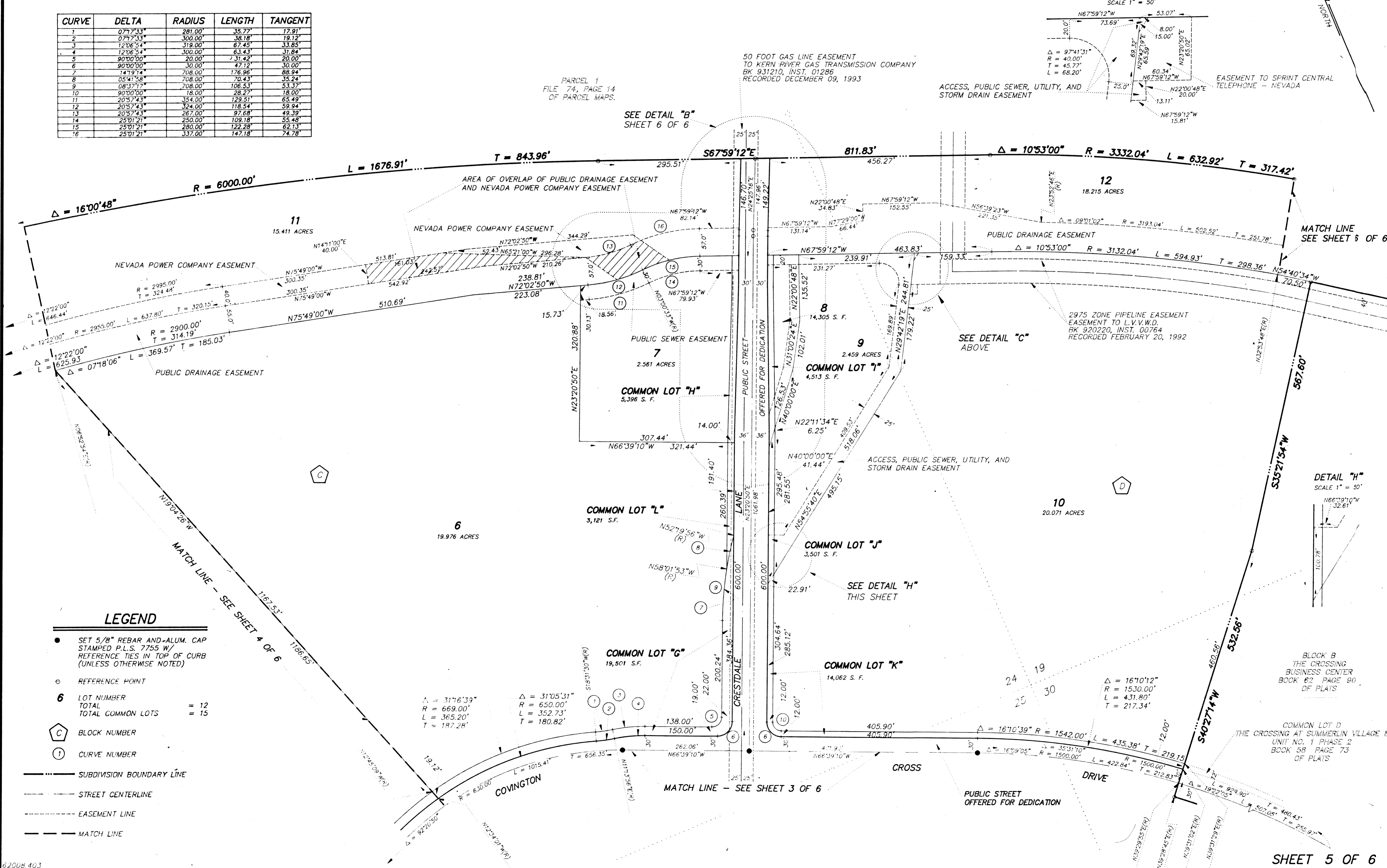
DETAIL "C"  
SCALE 1" = 50'

ACCESS, PUBLIC SEWER, UTILITY, AND  
STORM DRAIN EASEMENT

EASEMENT TO SPRINT CENTRAL  
TELEPHONE - NEVADA

SEE DETAIL "B"  
SHEET 6 OF 6

SCALE: 1" = 110'



### LEGEND

- SET 5/8" REBAR AND-ALUM. CAP STAMPED P.L.S. 7755 W/ REFERENCE TIES IN TOP OF CURB (UNLESS OTHERWISE NOTED)
- REFERENCE POINT
- 6 LOT NUMBER = 12  
TOTAL = 15
- C BLOCK NUMBER
- ① CURVE NUMBER
- SUBDIVISION BOUNDARY LINE
- STREET CENTERLINE
- - - EASEMENT LINE
- - - MATCH LINE

DETAIL "H"  
SCALE 1" = 50'

BLOCK B  
THE CROSSING  
BUSINESS CENTER  
BOOK 82 PAGE 90  
OF PLATS

COMMON LOT D  
THE CROSSING AT SUMMERLIN VILLAGE 8  
UNIT NO. 1 PHASE 3  
BOOK 58 PAGE 73  
OF PLATS