

940915

17-17-110

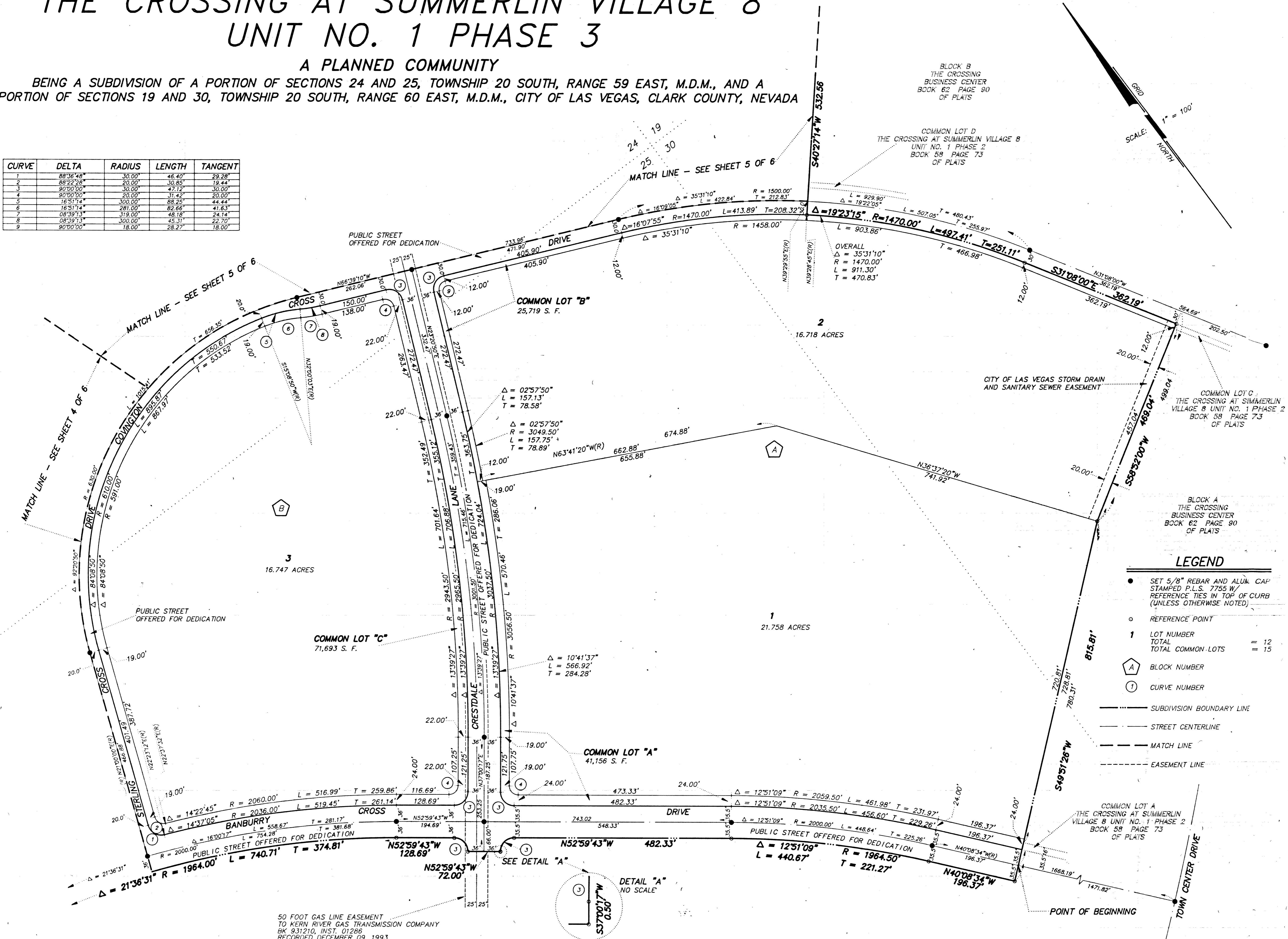
01420

FINAL MAP OF THE CROSSING AT SUMMERLIN VILLAGE 8 UNIT NO. 1 PHASE 3

A PLANNED COMMUNITY

BEING A SUBDIVISION OF A PORTION OF SECTIONS 24 AND 25, TOWNSHIP 20 SOUTH, RANGE 59 EAST, M.D.M., AND A PORTION OF SECTIONS 19 AND 30, TOWNSHIP 20 SOUTH, RANGE 60 EAST, M.D.M., CITY OF LAS VEGAS, CLARK COUNTY, NEVADA

CURVE	DELTA	RADIUS	LENGTH	TANGENT
1	88°36'48"	30.00'	46.40'	29.28'
2	88°22'28"	20.00'	30.85'	19.44'
3	90°00'00"	30.00'	47.12'	30.00'
4	90°00'00"	20.00'	31.42'	20.00'
5	16°51'14"	300.00'	88.25'	44.44'
6	16°51'14"	281.00'	82.66'	41.63'
7	08°39'13"	319.00'	48.18'	24.14'
8	08°39'13"	300.00'	45.31'	22.70'
9	90°00'00"	18.00'	28.27'	18.00'



LEGEND

- SET 5/8" REBAR AND ALUM. CAP STAMPED P.L.S. 7755 W/ REFERENCE TIES IN TOP OF CURB (UNLESS OTHERWISE NOTED)
- REFERENCE POINT
- 1 LOT NUMBER
TOTAL COMMON LOTS = 15
- A BLOCK NUMBER
- ① CURVE NUMBER
- SUBDIVISION BOUNDARY LINE
- STREET CENTERLINE
- - - MATCH LINE
- - - EASEMENT LINE