

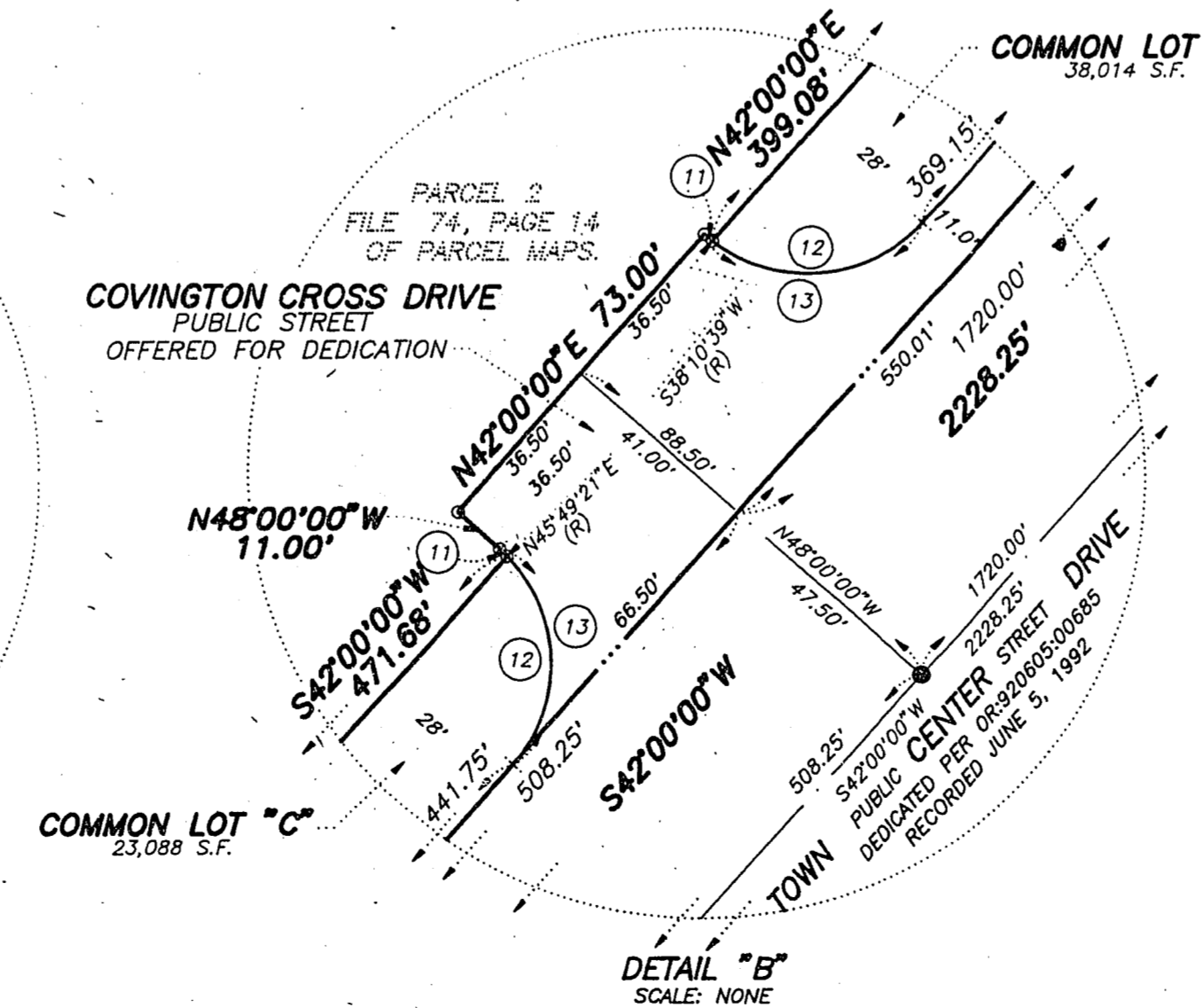
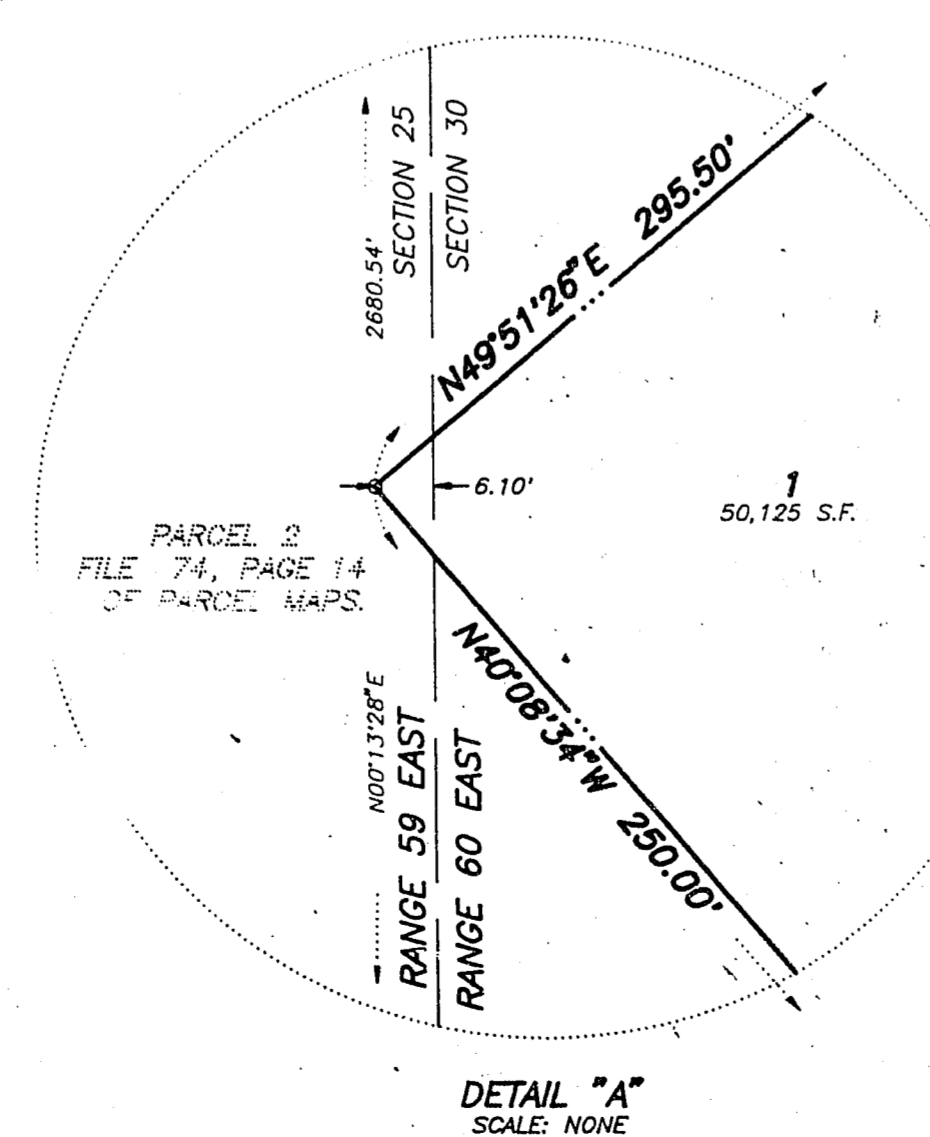
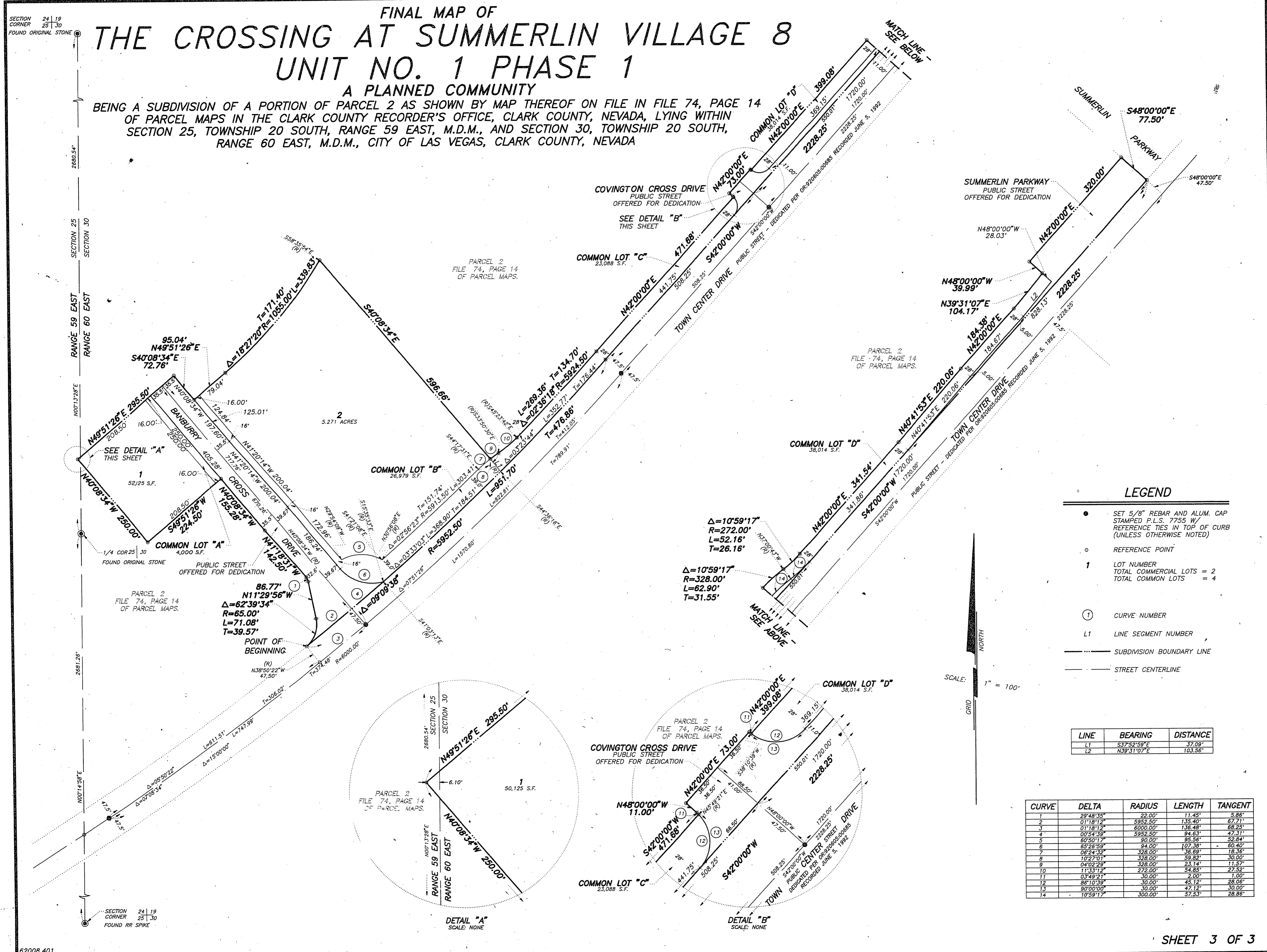
9.31015

17-17-120

01051

FINAL MAP OF THE CROSSING AT SUMMERLIN VILLAGE 8 UNIT NO. 1 PHASE 1 A PLANNED COMMUNITY

BEING A SUBDIVISION OF A PORTION OF PARCEL 2 AS SHOWN BY MAP THEREOF ON FILE IN FILE 74, PAGE 14 OF PARCEL MAPS IN THE CLARK COUNTY RECORDER'S OFFICE, CLARK COUNTY, NEVADA, LYING WITHIN SECTION 25, TOWNSHIP 20 SOUTH, RANGE 59 EAST, M.D.M., AND SECTION 30, TOWNSHIP 20 SOUTH, RANGE 60 EAST, M.D.M., CITY OF LAS VEGAS, CLARK COUNTY, NEVADA



LEGEND

- SET 5/8" REBAR AND ALUM. CAP STAMPED P.L.S. 7755 W/ REFERENCE TIES IN TOP OF CURB (UNLESS OTHERWISE NOTED)
- REFERENCE POINT
- 1 LOT NUMBER
TOTAL COMMON LOTS = 2
TOTAL COMMON LOTS = 4
- ① CURVE NUMBER
- L1 LINE SEGMENT NUMBER
- SUBDIVISION BOUNDARY LINE
- STREET CENTERLINE

| LINE | BEARING | DISTANCE |
|------|-------------|----------|
| L1 | S37°32'59"E | 37.99' |
| L2 | N39°31'07"E | 103.56' |

| CURVE | DELTA | RADIUS | LENGTH | TANGENT |
|-------|-----------|----------|---------|---------|
| 1 | 28°48'35" | 22.00' | 11.45' | 5.86' |
| 2 | 01°18'12" | 5956.50' | 136.40' | 62.71' |
| 3 | 01°18'12" | 6000.00' | 136.40' | 68.25' |
| 4 | 00°54'39" | 5952.50' | 94.63' | 47.31' |
| 5 | 60°50'17" | 90.00' | 95.56' | 52.84' |
| 6 | 63°28'59" | 94.00' | 107.38' | 60.40' |
| 7 | 06°24'32" | 328.00' | 36.69' | 18.36' |
| 8 | 10°27'01" | 328.00' | 59.82' | 30.00' |
| 9 | 04°02'29" | 328.00' | 23.14' | 11.57' |
| 10 | 11°33'12" | 275.00' | 54.85' | 27.52' |
| 11 | 03°49'21" | 30.00' | 2.00' | 1.00' |
| 12 | 86°10'39" | 30.00' | 45.12' | 28.08' |
| 13 | 90°00'00" | 300.00' | 47.12' | 30.00' |
| 14 | 10°59'17" | 300.00' | 57.53' | 28.88' |

62008.401