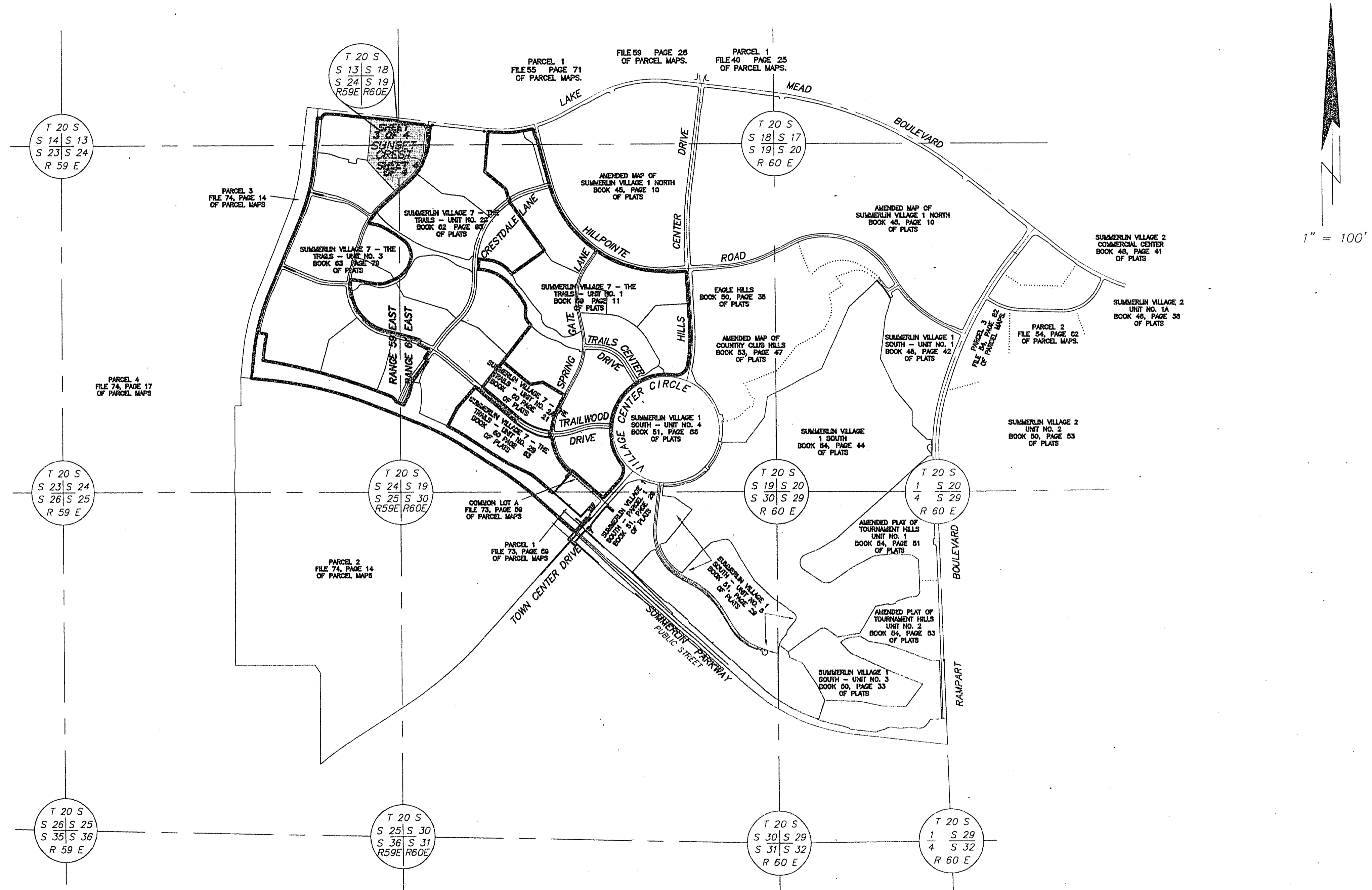


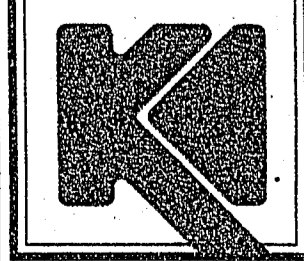
21-17-95

SUNSET CREST

A SUBDIVISION OF LOT 1 OF SUMMERLIN VILLAGE 7 - THE TRAILS UNIT 3 AS SHOWN BY MAP THEREOF ON FILE IN BOOK 63 PAGE 79 OF PLATS IN THE CLARK COUNTY RECORDER'S OFFICE, CLARK COUNTY, NEVADA, LYING IN SECTIONS 18 AND 19, TOWNSHIP 20 SOUTH, RANGE 60 EAST AND SECTIONS 13 AND 24, TOWNSHIP 20 SOUTH, RANGE 59 EAST, M.D.M., CITY OF LAS VEGAS, CLARK COUNTY, NEVADA.



SURVEYOR



THE KEITH COMPANIES, NEVADA

- PLANNING
- CIVIL ENGINEERING
- ENVIRONMENTAL SERVICES
- LAND SURVEYING
- DEVELOPER SERVICES
- PUBLIC WORKS
- WATER RESOURCES

444 EAST WARM SPRINGS ROAD, SUITE 110 LAS VEGAS, NV 89119 (702)265-8200 FAX(702)265-8528

COLEMAN HOMES
SUNSET CREST
SHEET 2 OF 4

BOOK 69 PAGE 71
4409