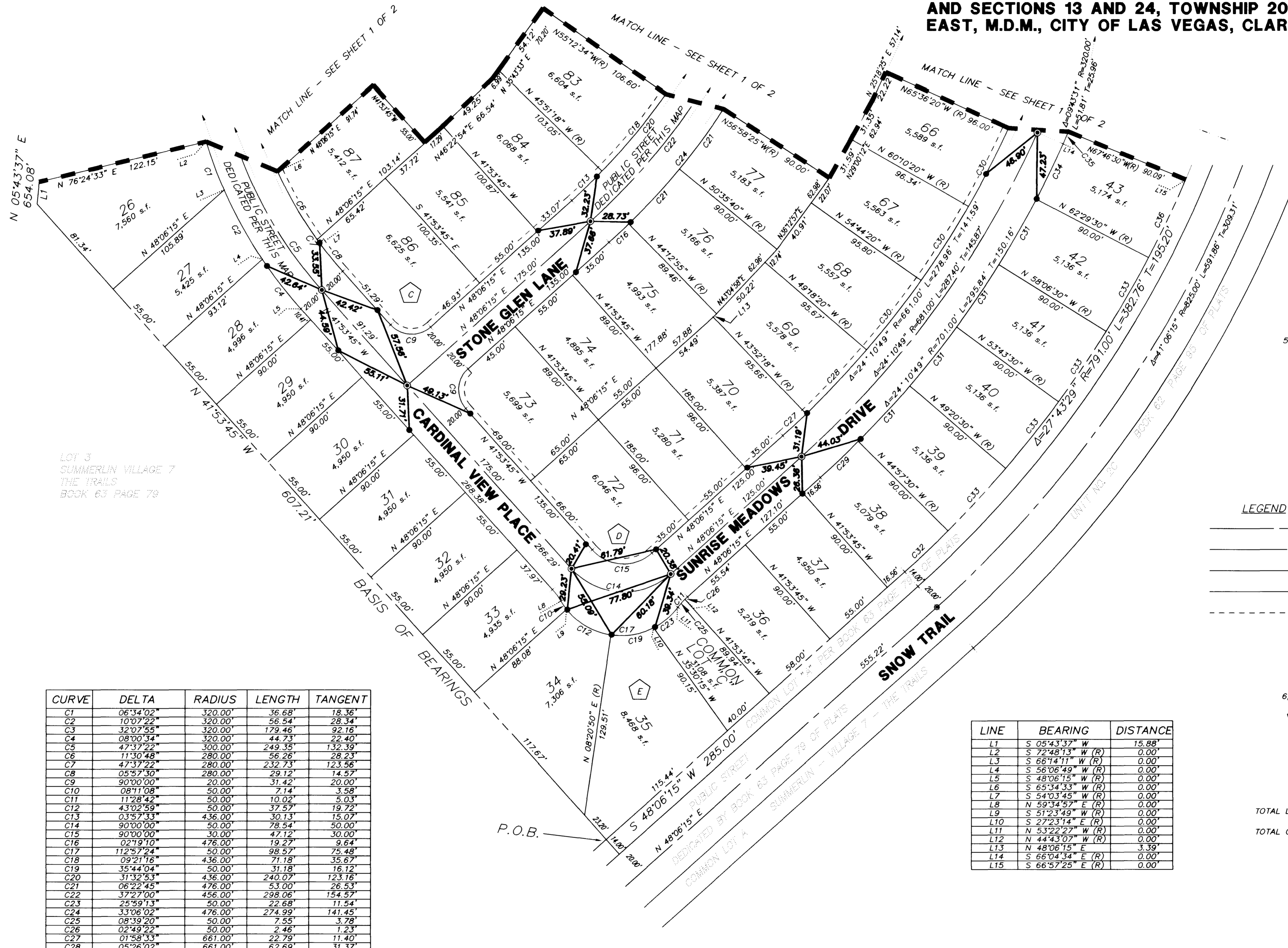
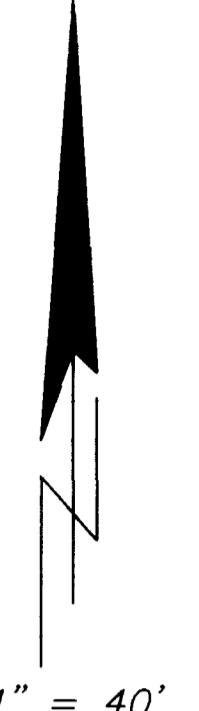
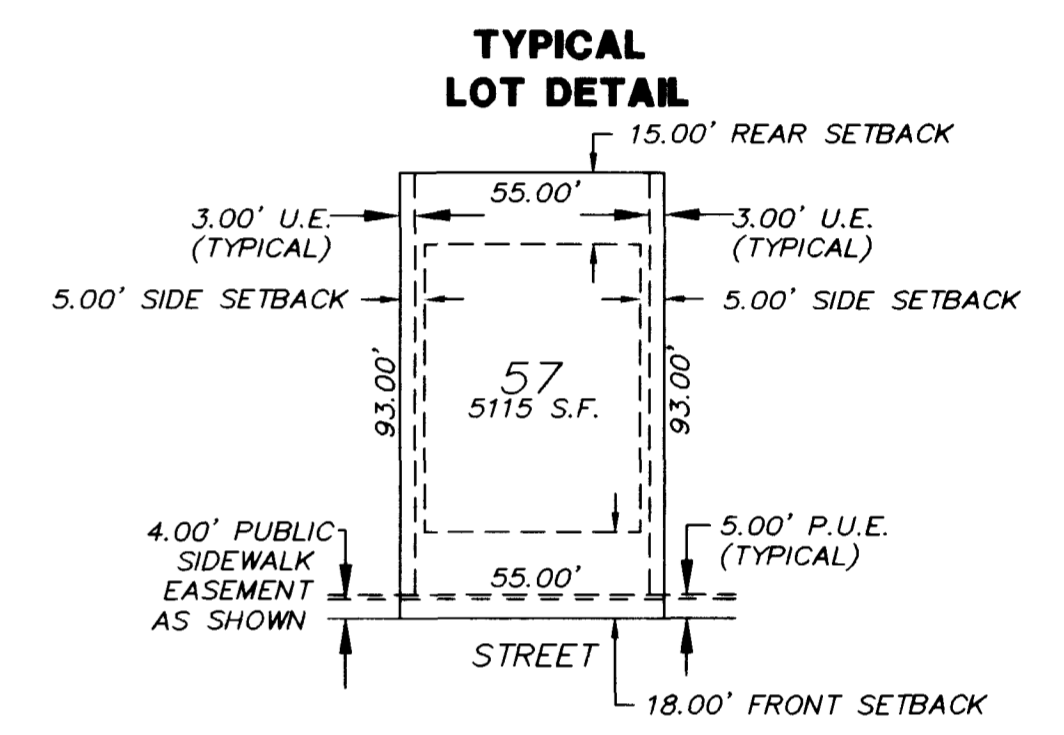


REFERENCE MONUMENT TIE MAP FOR SUNSET CREST

A SUBDIVISION OF LOT 1 OF SUMMERLIN VILLAGE 7 - THE TRAILS UNIT NO. 3 AS SHOWN BY MAP THEREOF ON FILE IN BOOK 63 PAGE 79 OF PLATS IN THE CLARK COUNTY RECORDER'S OFFICE, CLARK COUNTY, NEVADA, LYING IN SECTIONS 18 AND 19, TOWNSHIP 20 SOUTH, RANGE 60 EAST, AND SECTIONS 13 AND 24, TOWNSHIP 20 SOUTH, RANGE 59 EAST, M.D.M., CITY OF LAS VEGAS, CLARK COUNTY, NEVADA.



NOTE: THE SUMMERLIN MASTER HOA WILL MAINTAIN COMMON LOTS "A" THROUGH "E"



LOT 3 SUMMERLIN VILLAGE 7 THE TRAILS BOOK 63 PAGE 79

CURVE	DELTA	RADIUS	LENGTH	TANGENT
C1	06°34'02"	320.00'	36.68'	18.36'
C2	10°07'22"	320.00'	56.54'	28.34'
C3	32°07'55"	320.00'	179.46'	92.16'
C4	08°00'34"	320.00'	44.73'	22.40'
C5	47°37'22"	300.00'	249.35'	132.39'
C6	11°30'48"	280.00'	56.26'	28.23'
C7	47°37'22"	280.00'	232.73'	123.56'
C8	05°57'30"	280.00'	29.12'	14.57'
C9	90°00'00"	20.00'	31.42'	20.00'
C10	08°11'08"	50.00'	7.14'	3.58'
C11	11°28'42"	50.00'	10.02'	5.03'
C12	43°02'59"	50.00'	37.57'	19.72'
C13	03°57'33"	436.00'	30.13'	15.07'
C14	90°00'00"	50.00'	78.54'	50.00'
C15	90°00'00"	30.00'	47.12'	30.00'
C16	02°19'10"	476.00'	19.27'	9.64'
C17	112°57'24"	50.00'	98.57'	75.48'
C18	09°21'16"	436.00'	71.18'	35.67'
C19	35°44'04"	50.00'	31.18'	16.12'
C20	31°32'53"	436.00'	240.07'	123.16'
C21	06°22'45"	476.00'	53.00'	26.53'
C22	37°27'00"	456.00'	298.06'	154.57'
C23	25°59'13"	50.00'	22.68'	11.54'
C24	33°06'02"	476.00'	274.99'	141.45'
C25	08°59'20"	50.00'	7.55'	3.78'
C26	02°49'22"	50.00'	2.46'	1.23'
C27	01°58'33"	661.00'	22.79'	11.40'
C28	05°26'02"	661.00'	62.69'	31.37'
C29	03°03'45"	701.00'	37.47'	18.74'
C30	05°26'00"	661.00'	62.68'	31.36'
C31	04°23'00"	701.00'	53.63'	26.83'
C32	03°03'45"	791.00'	42.78'	21.14'
C33	04°23'00"	791.00'	60.51'	30.27'
C34	03°35'04"	701.00'	43.85'	21.93'
C35	01°41'56"	320.00'	9.49'	4.74'
C36	04°27'55"	791.00'	61.65'	30.84'

LINE	BEARING	DISTANCE
L1	S 05°43'37" W	15.88'
L2	S 72°48'13" W (R)	0.00'
L3	S 66°14'11" W (R)	0.00'
L4	S 56°06'49" W (R)	0.00'
L5	S 48°06'15" W (R)	0.00'
L6	S 65°34'33" W (R)	0.00'
L7	S 54°03'45" W (R)	0.00'
L8	N 59°34'57" E (R)	0.00'
L9	S 51°23'49" W (R)	0.00'
L10	S 27°23'14" E (R)	0.00'
L11	N 53°22'27" W (R)	0.00'
L12	N 44°43'07" W (R)	0.00'
L13	N 48°06'15" E (R)	3.39'
L14	S 66°04'34" E (R)	0.00'
L15	S 66°57'25" E (R)	0.00'

- LEGEND**
- BOUNDARY LINE
 - STREET CENTERLINE
 - BLOCK LINES
 - LOT LINES
 - 4' PUBLIC SIDEWALK EASEMENT
 - L1 LINE SEGMENT NUMBER
 - C1 CURVE SEGMENT NUMBER
 - 72 LOT NUMBER
 - 6,046 s.f. AREA OF LOT
 - D BLOCK NUMBER
 - FOUND MONUMENTS - REBAR AND ALUMINUM CAP STAMPED P.L.S. 8866 (UNLESS OTHERWISE NOTED)
 - SET MONUMENTS - REBAR AND ALUMINUM CAP STAMPED P.L.S. 8866
 - SET TYPE IV REF. MONUMENT, PLS 8866

TOTAL LOTS = 92
 TOTAL COMMON LOTS = 6
 LOTS WILL BE MONUMENTED IN THE FRONT WITH A SCRIBE IN THE TOP OF CURB AT THE INTERSECTION OF THE SIDE LOT LINE, AND IN THE REAR WITH A NAIL & TAG - P.L.S. 8056 IN THE FACE OF WALL AT THE INTERSECTION OF THE SIDE LOT LINE. ALL MONUMENTS ALONG THE BOUNDARY WILL BE A 5/8" REBAR AND ALUMINUM CAP STAMPED P.L.S. 8056 (UNLESS OTHERWISE NOTED).

NOTE: DIRECT VEHICULAR ACCESS TO SNOW TRAIL THROUGH COMMON AREA FROM ABUTTING LOTS IS PROHIBITED

SURVEYOR
THE KEITH COMPANIES, NEVADA
 ● PLANNING
 ● CIVIL ENGINEERING
 ● ENVIRONMENTAL SERVICES
 ● LAND SURVEYING
 ● DEVELOPER SERVICES
 ● PUBLIC WORKS
 ● WATER RESOURCES

SUNSET CREST
 COLEMAN HOMES

I:\COLLINS\DWG\554m2.dwg Fr 1 Apr 09 11:01:36 1999 P226605 CHRIS ALBERS
 HP DesignJet 750C Hewlett-Packard HP-GL/2 devices, ADI 4.3 (V4.1) - Feb 2 1998

