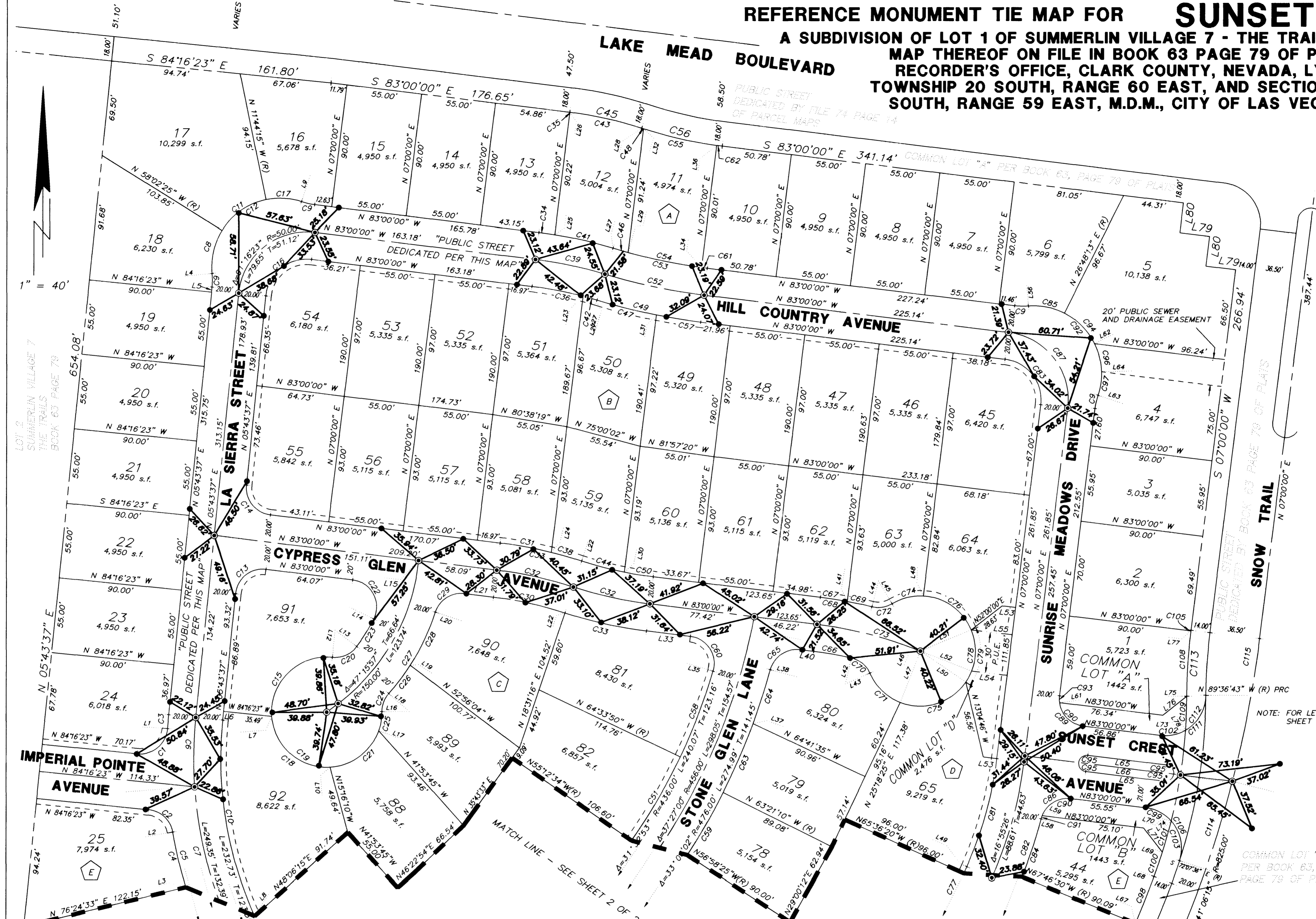
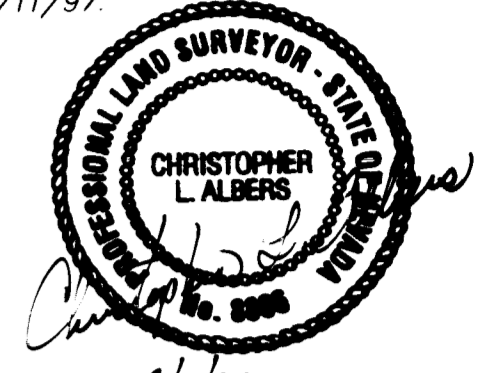


REFERENCE MONUMENT TIE MAP FOR SUNSET CREST

A SUBDIVISION OF LOT 1 OF SUMMERLIN VILLAGE 7 - THE TRAILS UNIT NO. 3 AS SHOWN BY MAP THEREOF ON FILE IN BOOK 63 PAGE 79 OF PLATS IN THE CLARK COUNTY RECORDER'S OFFICE, CLARK COUNTY, NEVADA, LYING IN SECTIONS 18 AND 19, TOWNSHIP 20 SOUTH, RANGE 60 EAST, AND SECTIONS 13 AND 24, TOWNSHIP 20 SOUTH, RANGE 59 EAST, M.D.M., CITY OF LAS VEGAS, CLARK COUNTY, NEVADA.

SURVEYOR CERTIFICATE
 I, CHRISTOPHER L. ALBERS, A PROFESSIONAL LAND SURVEYOR REGISTERED IN THE STATE OF NEVADA DO HEREBY CERTIFY THAT THE MONUMENTS SHOWN HAVE BEEN SET AND THAT THE REFERENCE MONUMENTS WERE ESTABLISHED AS SHOWN HEREON. THIS SURVEY WAS COMPLETED ON 1/11/97.



CHRISTOPHER L. ALBERS PLS 8866

LINE	BEARING	DISTANCE
L1	N 86°05'41" W (R)	0.00'
L2	N 80°14'10" E (R)	0.00'
L3	S 72°48'13" W (R)	0.00'
L4	N 84°14'55" E (R)	0.00'
L5	N 05°43'37" E	3.78'
L6	N 05°43'37" E	6.43'
L7	S 85°46'16" W (R)	0.00'
L8	S 65°34'33" W (R)	0.00'
L9	N 18°28'42" E (R)	0.00'
L10	S 03°34'37" E (R)	0.00'
L11	N 52°52'23" E	10.52'
L12	S 05°43'41" W (R)	0.00'
L13	S 53°17'46" E (R)	0.00'
L14	S 63°43'05" E (R)	0.00'
L15	S 84°23'34" E (R)	0.00'
L16	S 89°34'57" W (R)	0.00'
L17	S 70°07'13" E (R)	0.00'
L18	N 48°39'34" W (R)	0.00'
L19	S 57°24'49" E (R)	0.00'
L20	S 71°58'09" E (R)	0.00'
L21	N 83°00'00" W	21.55'
L22	S 17°59'17" W (R)	0.00'
L23	N 14°48'23" E (R)	0.00'
L24	N 13°49'33" E (R)	0.00'
L25	N 09°07'22" E (R)	0.00'
L26	N 07°01'43" E (R)	0.00'
L27	N 16°58'22" E (R)	0.00'
L28	N 17°59'17" E (R)	0.00'
L29	S 15°20'46" W (R)	0.00'
L30	S 11°22'09" W (R)	0.00'
L31	S 11°13'48" W (R)	0.00'
L32	S 17°43'59" W (R)	0.00'
L33	N 83°00'00" W	32.58'
L34	N 07°35'35" E (R)	0.00'
L35	S 73°26'38" E (R)	0.00'
L36	N 07°45'39" E (R)	0.00'
L37	S 69°59'16" E (R)	0.00'
L38	N 74°59'47" W (R)	0.00'
L39	S 79°20'46" E (R)	0.00'
L40	N 83°00'00" W	10.13'
L41	N 10°35'14" E (R)	0.00'
L42	N 12°45'14" E (R)	0.00'
L43	N 66°22'40" E (R)	0.00'
L44	S 13°54'19" W (R)	0.00'
L45	S 30°59'23" E (R)	0.00'
L46	N 22°01'14" E (R)	0.00'
L47	S 21°16'54" W (R)	0.00'
L48	N 03°08'16" E (R)	0.00'
L49	S 66°04'34" E (R)	0.00'
L50	S 55°11'21" E (R)	0.00'
L51	N 67°23'44" E (R)	0.00'
L52	S 68°42'57" E (R)	0.00'
L53	N 83°00'00" W	10.00'
L54	N 83°00'00" W	26.21'
L55	N 83°00'00" W	30.24'
L56	S 04°58'42" E (R)	0.00'
L57	N 83°00'00" W	40.00'
L58	S 75°48'06" E (W)	0.00'
L59	S 68°31'21" E (R)	0.00'
L60	N 83°00'00" W	153.60'
L61	S 82°31'21" W (R)	0.00'
L62	N 63°37'59" E (R)	0.00'
L63	N 71°31'18" W (R)	0.00'
L64	N 88°22'23" E (R)	0.00'
L65	N 83°00'00" W	58.29'
L66	N 83°00'00" W	70.29'
L67	N 66°57'25" W (R)	0.00'
L68	S 69°37'14" E (R)	27.22'
L69	S 72°26'37" E (R)	0.00'
L70	S 75°58'29" E (R)	0.00'
L71	N 38°00'00" W	22.51'
L72	N 83°00'00" W	5.01'
L73	S 86°00'47" E (R)	0.00'
L74	N 48°09'36" E (R)	0.00'
L75	N 89°43'38" W (R)	0.00'
L76	N 51°44'45" E	22.55'
L77	N 83°04'15" W (R)	0.00'
L78	S 30°08'37" E (R)	0.00'
L79	N 83°00'00" W	22.00'
L80	N 07°00'00" E	22.00'
L81	N 83°00'00" W	38.30'

NOTE: FOR LEGEND SEE SHEET 2 OF 2

CURVE	DELTA	RADIUS	LENGTH	TANGENT
1	91°49'18"	20.00'	32.05'	20.65'
2	74°30'33"	20.00'	26.01'	15.21'
3	01°49'18"	320.00'	10.17'	5.09'
4	07°25'52"	320.00'	41.51'	20.78'
5	32°07'55"	320.00'	179.46'	92.16'
6	09°45'03"	300.00'	51.06'	25.59'
7	37°52'19"	300.00'	198.30'	102.92'
8	37°42'40"	50.00'	32.91'	17.08'
9	11°28'42"	50.00'	10.02'	5.03'
10	30°09'04"	280.00'	147.35'	75.42'
11	46°18'10"	50.00'	40.41'	21.38'
12	114°13'47"	50.00'	99.68'	77.33'
13	91°16'23"	20.00'	31.86'	20.45'
14	88°43'37"	20.00'	19.56'	12.54'
15	98°57'25"	40.50'	70.66'	48.23'
16	91°16'23"	30.00'	47.79'	30.67'
17	30°12'57"	50.00'	26.37'	13.50'
18	89°20'53"	40.50'	63.16'	40.04'
19	27°08'44"	40.50'	195.20'	---
20	59°01'27"	20.00'	20.60'	11.32'
21	66°32'36"	40.50'	47.04'	26.57'
22	109°17'55"	20.00'	38.15'	28.19'
23	10°24'19"	130.00'	23.61'	11.84'
24	41°45'29"	20.00'	14.58'	7.63'
25	20°17'50"	40.50'	14.35'	7.25'
26	08°45'15"	170.00'	25.97'	13.01'
27	23°18'35"	170.00'	69.16'	35.07'

CURVE	DELTA	RADIUS	LENGTH	TANGENT
28	14°33'20"	170.00'	43.19'	21.71'
29	78°58'09"	20.00'	27.57'	16.48'
30	10°59'17"	280.00'	53.70'	26.93'
31	06°49'33"	320.00'	38.12'	19.08'
32	10°59'17"	300.00'	57.53'	28.86'
33	10°59'17"	320.00'	61.37'	30.78'
34	02°07'22"	320.00'	11.86'	5.93'
35	00°01'43"	282.00'	0.14'	0.07'
36	07°48'23"	280.00'	38.15'	19.10'
37	09°58'22"	280.00'	48.74'	24.43'
38	04°09'44"	320.00'	33.25'	11.63'
39	09°58'22"	300.00'	52.22'	26.17'
40	09°58'22"	320.00'	55.70'	27.92'
41	07°51'00"	320.00'	43.84'	21.96'
42	02°09'59"	280.00'	10.59'	5.29'
43	10°57'34"	282.00'	53.94'	27.05'
44	06°37'08"	280.00'	32.35'	16.19'
45	10°59'17"	282.00'	54.08'	27.12'
46	01°37'36"	408.00'	11.58'	5.79'
47	05°44'34"	448.00'	44.90'	22.47'
48	00°15'18"	318.00'	1.42'	0.71'
49	09°58'22"	448.00'	77.98'	39.09'
50	04°22'09"	280.00'	21.35'	10.68'
51	09°21'16"	436.00'	71.18'	35.67'
52	09°58'22"	428.00'	74.50'	37.34'
53	09°58'22"	408.00'	71.02'	35.60'
54	07°45'11"	408.00'	55.21'	27.65'

CURVE	DELTA	RADIUS	LENGTH	TANGENT
55	09°58'20"	318.00'	55.35'	27.74'
56	10°59'17"	318.00'	60.99'	30.59'
57	04°13'48"	448.00'	33.07'	16.54'
58	08°52'48"	436.00'	67.57'	33.85'
59	06°22'45"	476.00'	53.00'	26.53'
60	09°53'22"	20.00'	34.75'	23.65'
61	00°35'35"	408.00'	4.22'	2.11'
62	00°45'39"	318.00'	4.22'	2.11'
63	06°38'06"	476.00'	55.12'	27.59'
64	05°00'31"	476.00'	41.61'	20.82'
65	81°59'47"	20.00'	28.62'	17.38'
66	05°45'14"	280.00'	28.21'	14.07'
67	03°55'14"	320.00'	20.03'	10.02'
68	06°54'19"	320.00'	38.57'	19.31'
69	03°09'05"	320.00'	18.53'	9.27'
70	53°37'26"	19.50'	18.25'	9.86'
71	45°05'46"	40.50'	31.88'	16.82'
72	44°53'42"	19.50'	15.28'	8.06'
73	15°01'14"	300.00'	78.65'	39.55'
74	34°07'39"	40.50'	24.12'	12.43'
75	77°08'06"	40.50'	54.52'	32.29'
76	64°15'28"	40.50'	45.42'	25.43'
77	21°10'49"	661.00'	244.35'	123.59'
78	27°22'03"	40.50'	196.06'	---
79	56°45'04"	40.50'	40.11'	21.88'
80	00°28'14"	661.00'	5.43'	2.71'
81	16°55'26"	280.00'	82.71'	41.66'

CURVE	DELTA	RADIUS	LENGTH	TANGENT
82	09°43'32"	320.00'	54.32'	27.22'
83	90°00'00"	30.00'	47.12'	30.00'
84	08°01'36"	320.00'	44.83'	22.45'
85	31°16'55"	50.00'	27.30'	14.00'
86	82°48'06"	20.00'	28.90'	17.63'
87	90°00'00"	50.00'	78.54'	50.00'
88	180°00'00"	6.00'	18.85'	---
89	90°00'00"	20.00'	31.42'	20.00'
90	75°31'21"	20.00'	26.36'	15.49'
91	07°16'45"	20.00'	2.54'	1.27'
92	112°57'24"	50.00'	98.57'	75.48'
93	142°58'39"	20.00'	6.05'	2.54'
94	36°49'46"	50.00'	32.14'	16.65'
95	90°00'00"	6.00'	9.42'	6.00'
96	24°44'24"	50.00'	21.59'	10.97'
97	20°06'19"	50.00'	17.55'	8.86'
98	02°39'49"	791.00'	36.77'	18.39'
99	41°09'36"	30.00'	21.55'	11.26'
100	02°49'23"	386.00'	19.02'	9.51'
101	03°31'52"	386.00'	23.79'	11.90'
102	37°08'37"	30.00'	19.45'	10.08'
103	59°42'48"	30.00'	31.27'	17.22'
104	05°07'29"	386.00'	34.53'	17.27'
105	00°45'15"	414.00'	0.51'	0.26'
106	100°52'24"	30.00'	52.82'	36.31'
107	04°54'49"	386.00'	33.10'	16.56'

CURVE	DELTA	RADIUS	LENGTH	TANGENT
108	06°39'23"	414.00'	48.10'	24.08'
109	03°42'51"	386.00'	25.02'	12.52'
110	20°06'24"	386.00'	135.46'	68.43'
111	96°36'43"	30.00'	50.59'	33.68'
112	59°28'06"	30.00'	31.14'	17.14'
113	06°43'38"	414.00'	48.61'	24.33'
114	33°41'10"	825.00'	485.05'	249.76'
115	07°25'05"	825.00'	106.81'	53.48'

058-4409-1,2 SHEET 1 OF 2

