

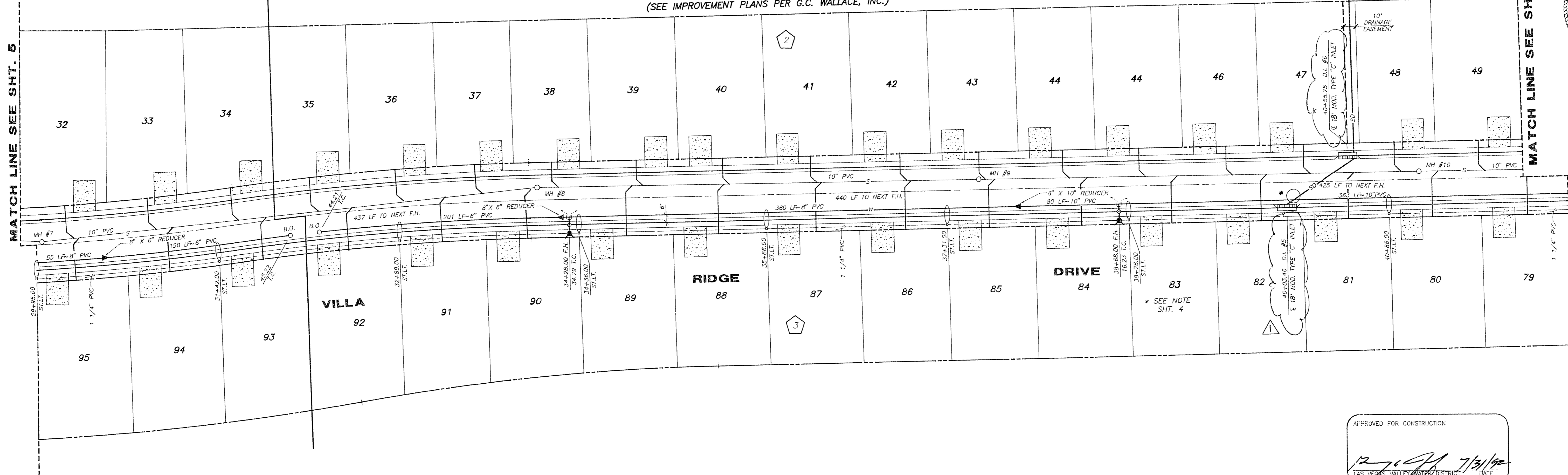
2975 WATER ZONE 2860 WATER ZONE

CHEYENNE AVE.
(SEE IMPROVEMENT PLANS PER G.C. WALLACE, INC.)
COMMON LOT C

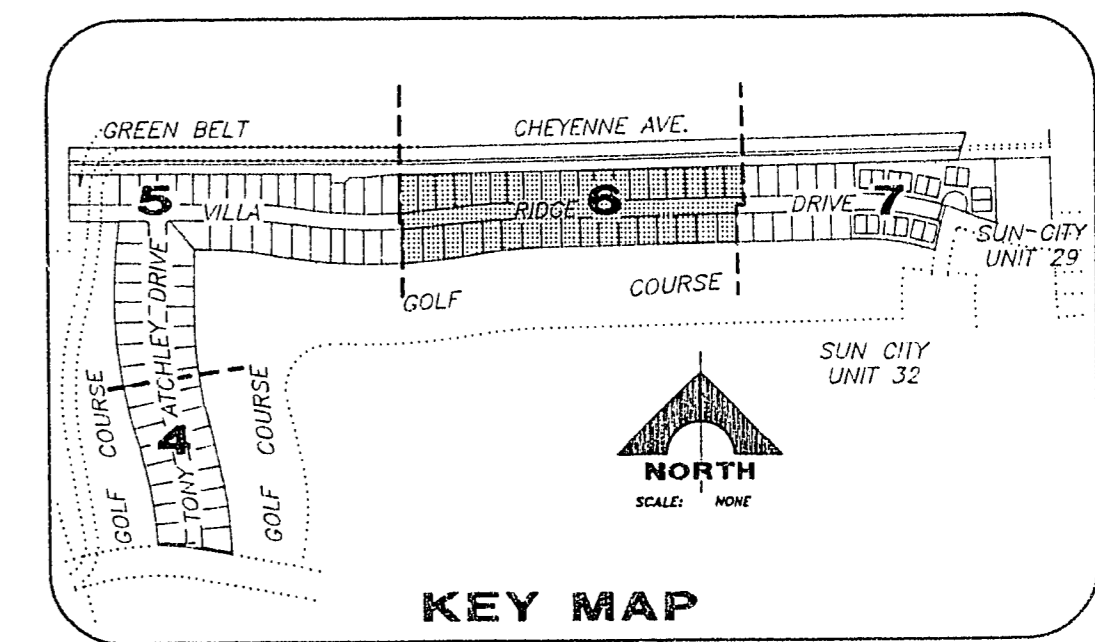
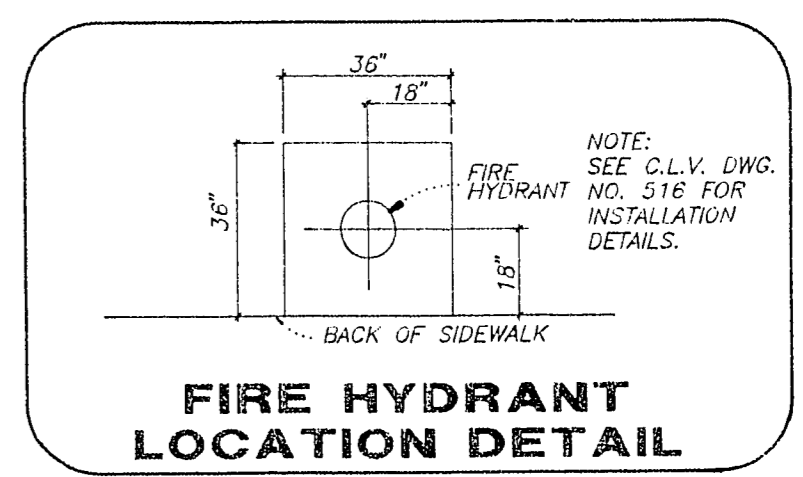
CHEYENNE CHANNEL
(SEE IMPROVEMENT PLANS PER G.C. WALLACE, INC.)

MATCH LINE SEE SHT. 5

MATCH LINE SEE SHT. 7



APPROVED FOR CONSTRUCTION
[Signature] 7/31/92
LAS VEGAS VALLEY WATER DISTRICT DATE



REV.	DATE	DESCRIPTION	SCALE	DATE
1	7/21/92	ISSUE FOR PERMITS	1/4" = 40'	7/21/92
2	7/21/92	REVISED PER COMMENTS	1/4" = 40'	7/21/92

REGISTERED PROFESSIONAL ENGINEER - STATE OF NEVADA
MICHAEL D. ROSS
No. 8118
G.C. WALLACE, INC.
Engineering/Architecture
1855 SOUTH HARBOR BLVD., LAS VEGAS, NEVADA 89102

DEL WEBB COMMUNITIES, INC.
SUN CITY LAS VEGAS UNIT NO. 37
UTILITY PLAN III
SHEET
6
OF 26 SHEETS

JOB NO. 701.164 PLOTTED: 06/29/92 10:16 am DRAWING: 037-6

10-9-101 307Y-4141-37