

29-12-215

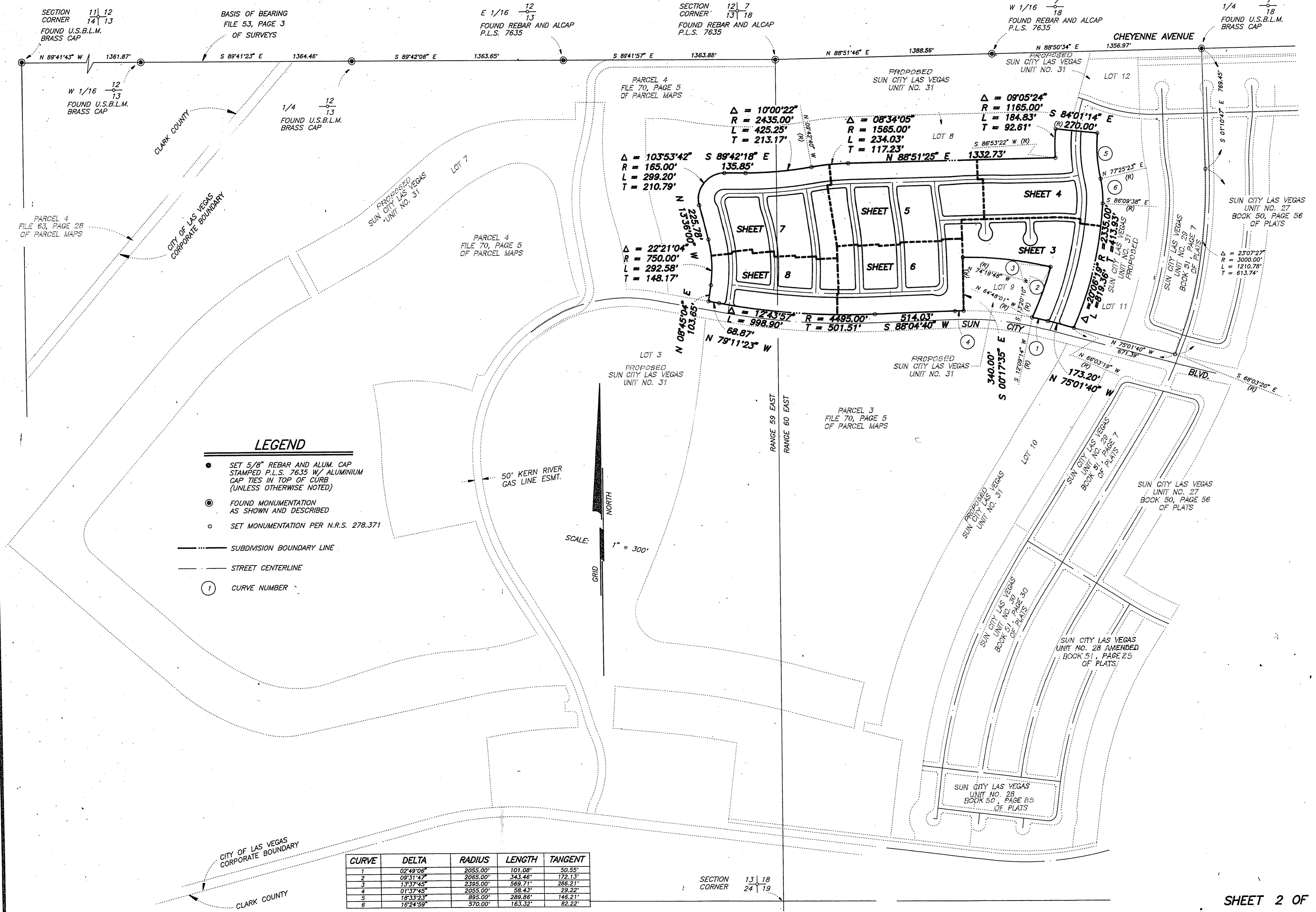
Book No. 911330

SUN CITY LAS VEGAS - UNIT NO. 32

A PLANNED DEVELOPMENT

Instrument No. 01210

BEING A SUBDIVISION OF ALL OF PARCEL 2 AS SHOWN BY MAP THEREOF ON FILE IN FILE 70, PAGE 5 OF PARCEL MAPS
IN THE CLARK COUNTY RECORDER'S OFFICE, CLARK COUNTY, NEVADA, LYING WITHIN SECTION 13, TOWNSHIP 20 SOUTH,
RANGE 59 EAST AND SECTION 18, TOWNSHIP 20 SOUTH, RANGE 60 EAST, M.D.M., CITY OF LAS VEGAS, CLARK COUNTY, NEVADA



- LEGEND**
- SET 5/8" REBAR AND ALUM. CAP STAMPED P.L.S. 7635 W/ ALUMINIUM CAP TIES IN TOP OF CURB (UNLESS OTHERWISE NOTED)
 - ⊙ FOUND MONUMENTATION AS SHOWN AND DESCRIBED
 - SET MONUMENTATION PER N.R.S. 278.371
 - SUBDIVISION BOUNDARY LINE
 - - - STREET CENTERLINE
 - ① CURVE NUMBER

CURVE	DELTA	RADIUS	LENGTH	TANGENT
1	02°49'06"	2055.00'	101.08'	50.55'
2	09°31'47"	2065.00'	343.46'	172.13'
3	1°37'45"	2395.00'	569.71'	286.21'
4	01°37'45"	2055.00'	58.43'	29.22'
5	18°33'23"	895.00'	286.66'	146.21'
6	16°24'59"	570.00'	163.32'	82.22'

SECTION CORNER 13 | 18
24 | 19

SHEET 2 OF 8

701.150