

SUN CITY LAS VEGAS - UNIT NO. 32

BEING A SUBDIVISION OF ALL OF PARCEL 2 AS SHOWN BY MAP THEREOF ON FILE IN FILE 70, PAGE 5 OF PARCEL MAPS IN THE CLARK COUNTY RECORDER'S OFFICE, CLARK COUNTY, NEVADA, LYING WITHIN SECTION 13, TOWNSHIP 20 SOUTH, RANGE 59 EAST AND SECTION 18, TOWNSHIP 20 SOUTH, RANGE 60 EAST, M.D.M., CITY OF LAS VEGAS, CLARK COUNTY, NEVADA

NOTE:
FOR SIDE PROPERTY LINES: SET CONCRETE NAIL AND TIN IN THE REAR WALL ON THE PROPERTY LINE PROJECTED. SET SAWCUT IN THE BACK OF CURB AT THE FRONT OF THE LOT ON THE PROPERTY LINE PROJECTED.

SET 2"x2" HUB AND TACK AT LOT CORNERS WHERE THERE IS NO BLOCK WALL.

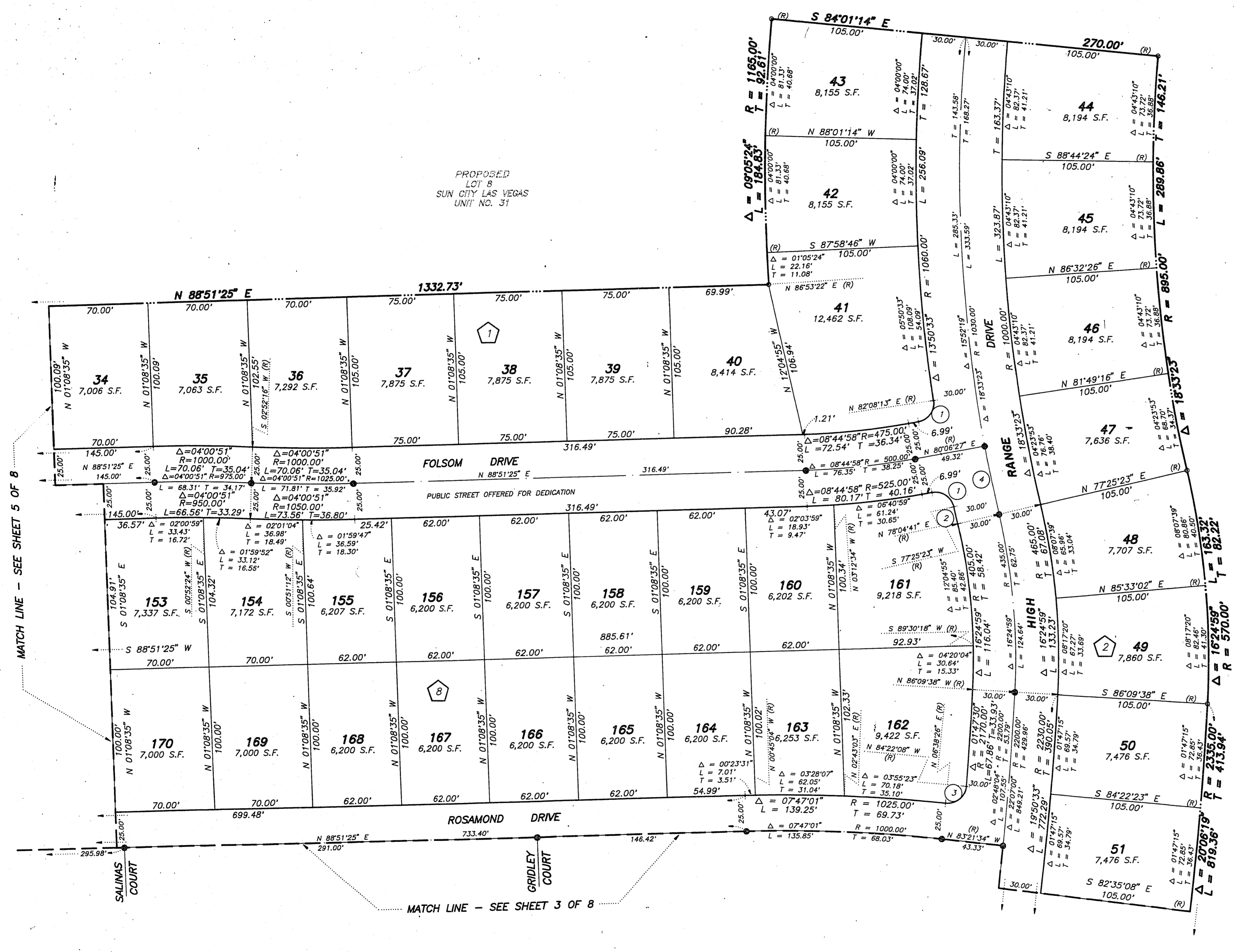
SEE SHEET 2 FOR KEY MAP AND BASIS OF BEARING

NOTE:
MINIMUM BUILDING SETBACK 18' FRONT OF LOT AND 10' SIDE CORNER LOTS.

PROPOSED LOT 11 SUN CITY LAS VEGAS UNIT NO. 31

LEGEND

- SET 5/8" REBAR AND ALUM. CAP STAMPED P.L.S. 7635 W/ ALUMINIUM CAP TIES IN TOP OF CURB (UNLESS OTHERWISE NOTED)
- SET MONUMENTATION PER N.R.S. 278.371
- 51 LOT NUMBER
TOTAL RESIDENTIAL LOTS = 233
COMMON LOTS IN SUBDIVISION = 1
- 2 BLOCK NUMBER
- 3 CURVE NUMBER
- SUBDIVISION BOUNDARY LINE
- STREET CENTERLINE



CURVE	DELTA	RADIUS	LENGTH	TANGENT
1	07°58'14"	13.00'	13.96'	12.55'
2	00°39'18"	1060.00'	12.12'	6.06'
3	91°00'34"	13.00'	20.65'	13.23'
4	02°41'04"	1030.00'	48.28'	24.13'