

29-12-218

Book No. 911330

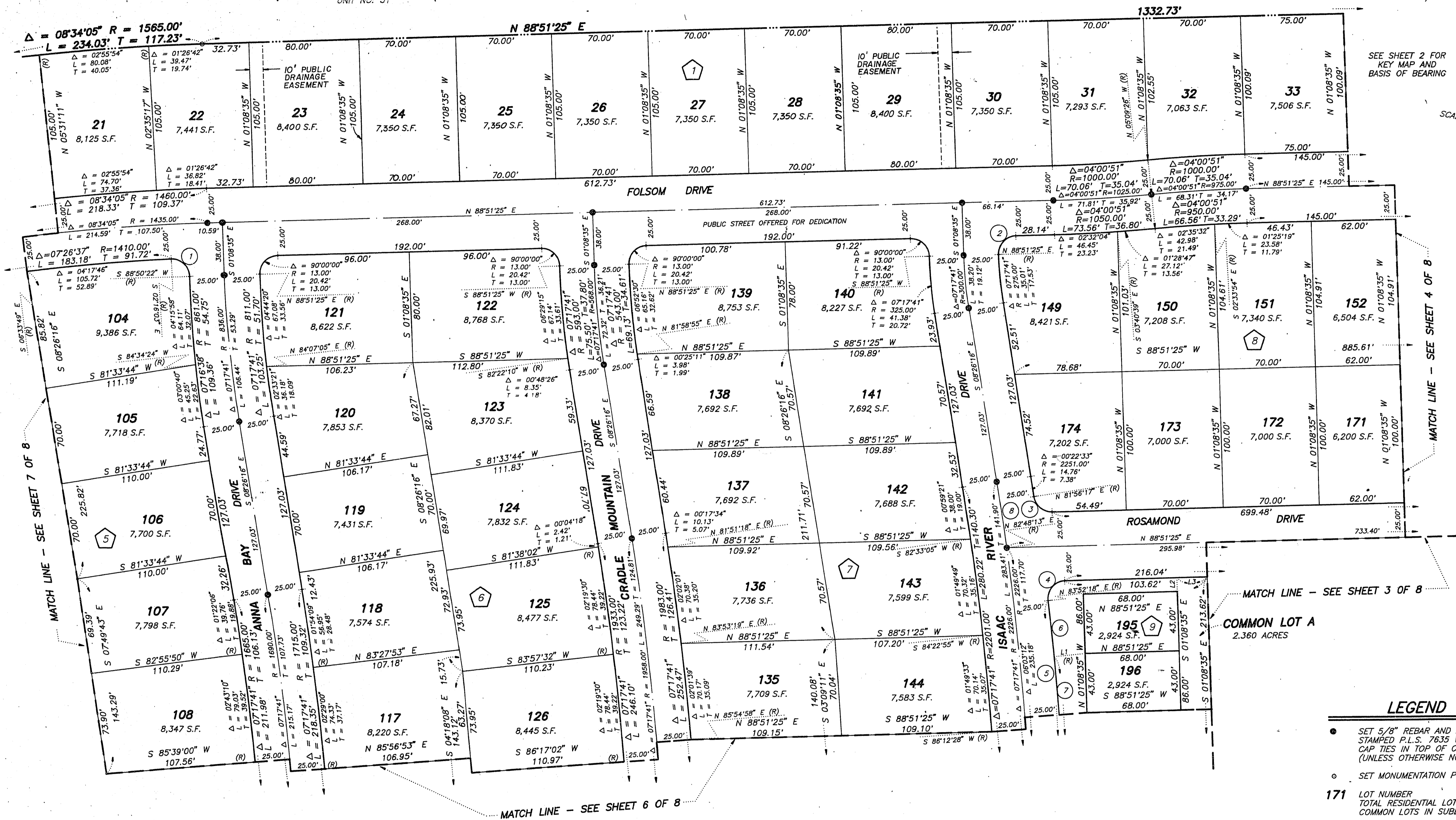
SUN CITY LAS VEGAS - UNIT NO. 32

Instrument No. 01210

A PLANNED DEVELOPMENT

BEING A SUBDIVISION OF ALL OF PARCEL 2 AS SHOWN BY MAP THEREOF ON FILE IN FILE 70, PAGE 5 OF PARCEL MAPS IN THE CLARK COUNTY RECORDER'S OFFICE, CLARK COUNTY, NEVADA, LYING WITHIN SECTION 13, TOWNSHIP 20 SOUTH, RANGE 59 EAST AND SECTION 18, TOWNSHIP 20 SOUTH, RANGE 60 EAST, M.D.M., CITY OF LAS VEGAS, CLARK COUNTY, NEVADA

PROPOSED
LOT B
SUN CITY LAS VEGAS
UNIT NO. 31



SEE SHEET 2 FOR
KEY MAP AND
BASIS OF BEARING

SCALE:
1" = 40'

MATCH LINE - SEE SHEET 4 OF 8

MATCH LINE - SEE SHEET 3 OF 8

MATCH LINE - SEE SHEET 6 OF 8

LEGEND

- SET 5/8" REBAR AND ALUM. CAP STAMPED P.L.S. 7635 W/ ALUMINIUM CAP TIES IN TOP OF CURB (UNLESS OTHERWISE NOTED)
- SET MONUMENTATION PER N.R.S. 278.371
- 171 LOT NUMBER
TOTAL RESIDENTIAL LOTS = 233
COMMON LOTS IN SUBDIVISION = 1
- 8 BLOCK NUMBER
- 1 CURVE NUMBER
- L1 LINE SEGMENT NUMBER
- SUBDIVISION BOUNDARY LINE
- STREET CENTERLINE

NOTE:
MINIMUM BUILDING SETBACK
18' FRONT OF LOT AND 10' SIDE CORNER LOTS.

NOTE:
FOR SIDE PROPERTY LINES: SET CONCRETE MAIL AND TIN IN THE REAR WALL ON THE PROPERTY LINE PROJECTED. SET SAWCUT IN THE BACK OF CURB AT THE FRONT OF THE LOT ON THE PROPERTY LINE PROJECTED.

SET 2"x2" HUB AND TACK AT LOT CORNERS WHERE THERE IS NO BLOCK WALL.

CURVE	DELTA	RADIUS	LENGTH	TANGENT
1	91°06'29"	13.00'	20.67'	13.25'
2	90°00'00"	13.00'	20.42'	13.00'
3	83°04'52"	13.00'	18.85'	11.82'
4	94°59'07"	13.00'	21.55'	14.18'
5	04°59'07"	2251.00'	195.86'	97.99'
6	01°02'01"	2251.00'	40.61'	20.30'
7	02°32'40"	2251.00'	96.96'	48.99'
8	01°14'29"	2226.00'	48.23'	24.12'

LINE	BEARING	DISTANCE
L1	N 84°54'19" E	23.41'
L2	N 01°08'35" W	10.00'
L3	N 88°51'25" E	22.07'

SHEET 5 OF 8