

29-10-221

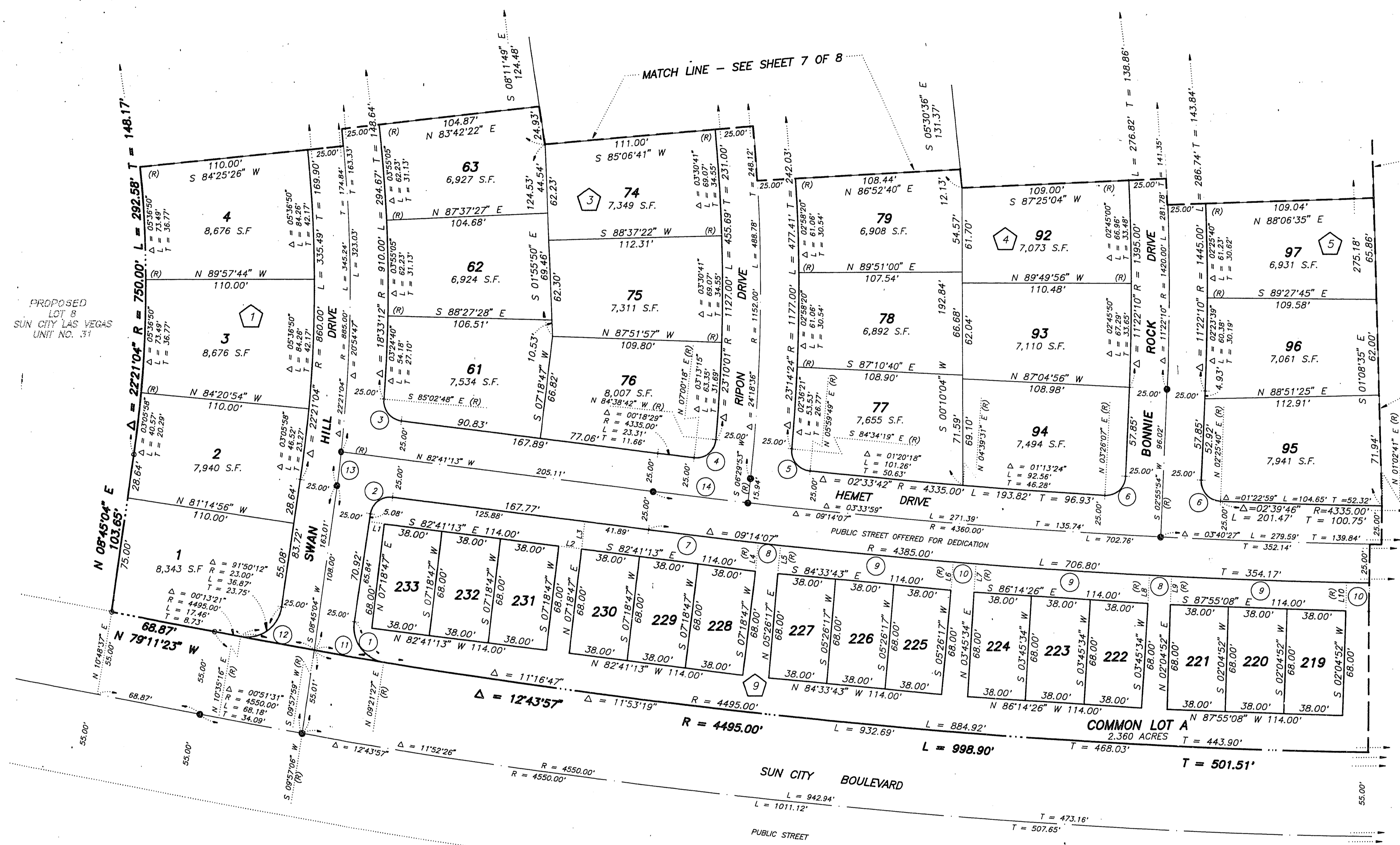
Book No. 911230

# SUN CITY LAS VEGAS - UNIT NO. 32

## A PLANNED DEVELOPMENT

Instrument No. 01210

BEING A SUBDIVISION OF ALL OF PARCEL 2 AS SHOWN BY MAP THEREOF ON FILE IN FILE 70, PAGE 5 OF PARCEL MAPS IN THE CLARK COUNTY RECORDER'S OFFICE, CLARK COUNTY, NEVADA, LYING WITHIN SECTION 13, TOWNSHIP 20 SOUTH, RANGE 59 EAST AND SECTION 18, TOWNSHIP 20 SOUTH, RANGE 60 EAST, M.D.M., CITY OF LAS VEGAS, CLARK COUNTY, NEVADA



**NOTE:**  
FOR SIDE PROPERTY LINES: SET CONCRETE NAIL AND TIN IN THE REAR WALL ON THE PROPERTY LINE PROJECTED. SET SAWCUT IN THE BACK OF CURB AT THE FRONT OF THE LOT ON THE PROPERTY LINE PROJECTED.

SET 2"x2" HUB AND TACK AT LOT CORNERS WHERE THERE IS NO BLOCK WALL.

SEE SHEET 2 FOR KEY MAP AND BASIS OF BEARING

SCALE: 1" = 40'

**NOTE:**  
LOTS 219 THROUGH 233, INCLUSIVE CONTAIN 2,584 sq EACH.

**NOTE:**  
MINIMUM BUILDING SETBACK 18' FRONT OF LOT AND 10' SIDE CORNER LOTS.

**NOTE:**  
DIRECT VEHICULAR ACCESS TO SUN CITY BOULEVARD FROM ABUTTING LOTS IS PROHIBITED.

### LEGEND

- SET 5/8" REBAR AND ALUM. CAP STAMPED P.L.S. 7635 W/ ALUMINUM CAP TIES IN TOP OF CURB (UNLESS OTHERWISE NOTED)
- SET MONUMENTATION PER N.R.S. 278.371
- 2 LOT NUMBER  
TOTAL RESIDENTIAL LOTS = 233  
COMMON LOTS IN SUBDIVISION = 1
- ① BLOCK NUMBER
- ⑩ CURVE NUMBER
- L1 LINE SEGMENT NUMBER
- SUBDIVISION BOUNDARY LINE
- STREET CENTERLINE

LINE	BEARING	DISTANCE
1	S 81°14'56" E	10.00'
2	S 82°41'13" E	15.00'
3	S 07°18'47" W	18.00'
4	S 06°22'22" W	18.59'
5	S 06°10'47" W	18.37'
6	S 04°41'47" W	18.37'
7	S 04°30'04" W	18.37'
8	S 03°01'04" W	18.37'
9	S 02°49'22" W	18.37'
10	S 01°20'22" W	18.37'

CURVE	DELTA	RADIUS	LENGTH	TANGENT
1	89°23'37"	23.00'	35.88'	22.76'
2	88°33'43"	13.00'	20.09'	12.68'
3	87°38'29"	13.00'	19.86'	12.40'
4	91°39'00"	13.00'	20.79'	13.36'
5	89°25'52"	13.00'	20.29'	12.87'
6	90°30'13"	13.00'	20.53'	13.11'
7	00°58'17"	4385.00'	71.79'	35.90'
8	00°11'42"	4385.00'	14.92'	7.46'
9	01°29'00"	4385.00'	113.53'	56.76'
10	00°11'43"	4385.00'	14.95'	7.47'
11	00°35'39"	4495.00'	47.77'	23.88'
12	00°37'17"	4495.00'	48.75'	24.38'
13	01°26'12"	885.00'	22.21'	11.11'
14	00°48'54"	4360.00'	62.02'	31.01'

SHEET 8 OF 8