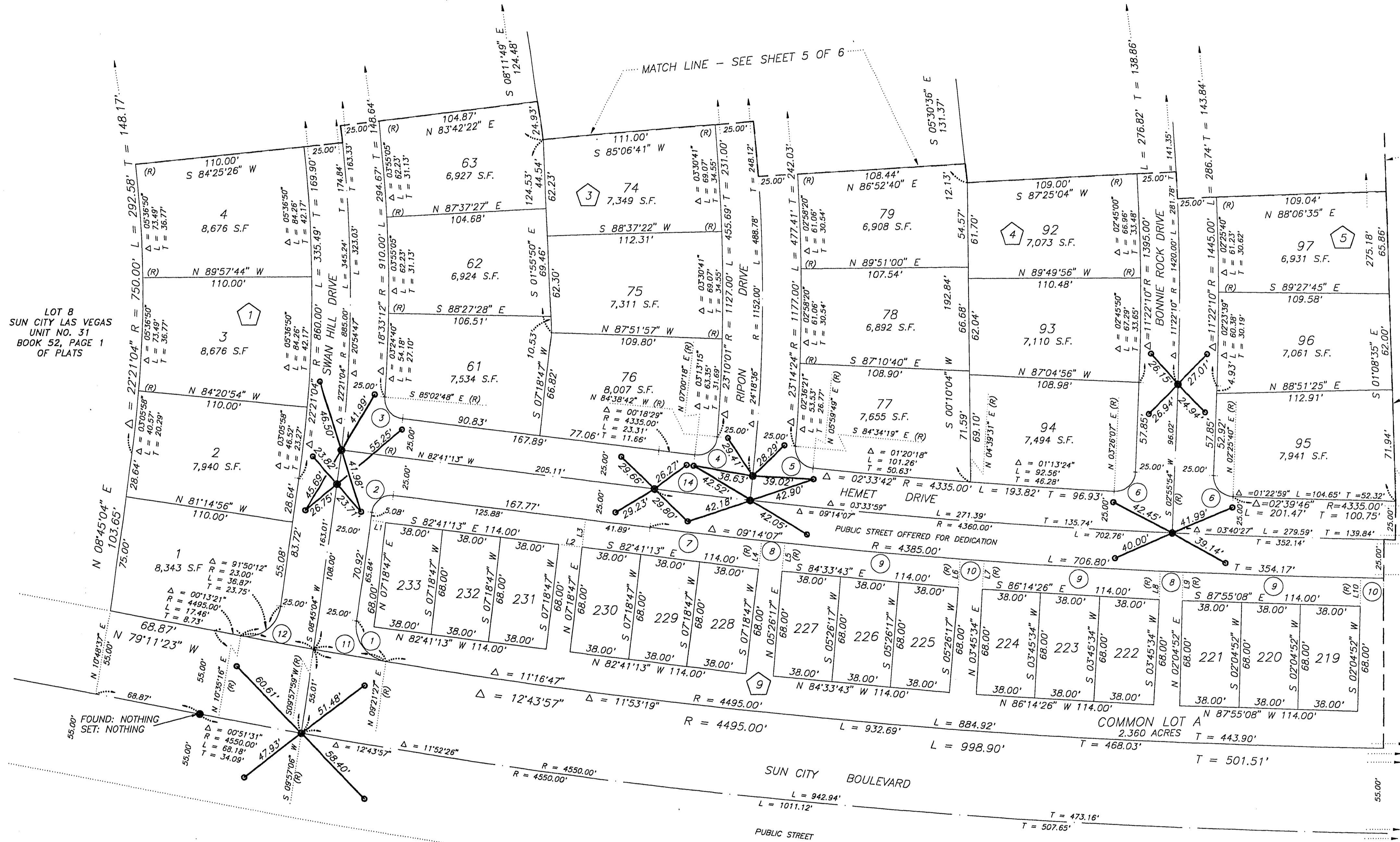


# SUN CITY LAS VEGAS - UNIT NO. 32

## REFERENCE MONUMENT TIE MAP

BEING A SUBDIVISION OF ALL OF PARCEL 2 AS SHOWN BY MAP THEREOF ON FILE IN FILE 70, PAGE 5 OF PARCEL MAPS IN THE CLARK COUNTY RECORDER'S OFFICE, CLARK COUNTY, NEVADA, LYING WITHIN SECTION 13, TOWNSHIP 20 SOUTH, RANGE 59 EAST AND SECTION 18, TOWNSHIP 20 SOUTH, RANGE 60 EAST, M.D.M., CITY OF LAS VEGAS, CLARK COUNTY, NEVADA



NOTE:  
FOR SIDE PROPERTY LINES: SET CONCRETE NAIL AND TIN IN THE REAR WALL ON THE PROPERTY LINE PROJECTED. SET SAWCUT IN THE BACK OF CURB AT THE FRONT OF THE LOT ON THE PROPERTY LINE PROJECTED.

SET 2"x2" HUB AND TACK AT LOT CORNERS WHERE THERE IS NO BLOCK WALL.

NOTE:  
LOTS 219 THROUGH 233, INCLUSIVE CONTAIN 2,584 sq. FT. EACH.

NOTE:  
MINIMUM BUILDING SETBACK 18' FRONT OF LOT AND 10' SIDE CORNER LOTS.

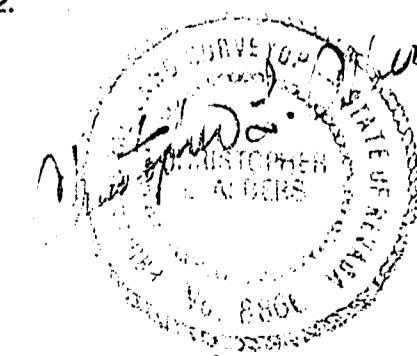
NOTE:  
DIRECT VEHICULAR ACCESS TO SUN CITY BOULEVARD FROM ADJACENT LOTS IS PROHIBITED.

### LEGEND

- SET 5/8" REBAR AND ALUM. CAP STAMPED P.L.S. 8868 W/ REFERENCE TIES IN TOP OF CURB (UNLESS OTHERWISE NOTED)
- FOUND MONUMENTATION AS SHOWN AND DESCRIBED
- SET TYPE IV REFERENCE MONUMENT, PLS 8866, IN TOP OF CURB
- 2 LOT NUMBER  
TOTAL RESIDENTIAL LOTS = 233  
TOTAL COMMON LOTS = 1
- ① BLOCK NUMBER
- ⑩ CURVE NUMBER
- L1 LINE SEGMENT NUMBER
- SUBDIVISION BOUNDARY LINE
- STREET CENTERLINE

### SURVEYOR CERTIFICATE

I, CHRISTOPHER L. ALBERS, A PROFESSIONAL LAND SURVEYOR REGISTERED IN THE STATE OF NEVADA DO HEREBY CERTIFY THAT THE MONUMENTS SHOWN HAVE BEEN SET AND THAT THE REFERENCE MONUMENTS WERE ESTABLISHED AS SHOWN HEREON. THIS SURVEY WAS COMPLETED ON 10/6/92.



CHRISTOPHER L. ALBERS

10/13/92  
PLS 8866

LINE	BEARING	DISTANCE
1	S 81°14'56" E	10.00'
2	S 82°41'13" E	15.00'
3	S 07°18'47" W	18.00'
4	S 06°22'29" W	18.59'
5	S 05°10'47" W	18.37'
6	S 04°41'47" W	18.37'
7	S 04°30'04" W	18.37'
8	S 03°01'04" W	18.37'
9	S 02°49'22" W	18.37'
10	S 01°20'22" W	18.37'

CURVE	DELTA	RADIUS	LENGTH	TANGENT
1	89°23'37"	23.00'	35.88'	22.76'
2	88°33'43"	11.00'	20.09'	12.68'
3	87°38'25"	13.00'	19.88'	12.48'
4	91°39'00"	13.00'	20.79'	13.39'
5	89°25'52"	11.00'	20.29'	12.87'
6	90°30'13"	13.00'	20.53'	13.11'
7	00°56'17"	4385.00'	71.79'	35.90'
8	00°11'42"	4385.00'	14.92'	7.46'
9	01°29'00"	4385.00'	11.63'	5.76'
10	00°11'43"	4385.00'	14.95'	7.47'
11	00°36'32"	4495.00'	47.77'	23.88'
12	00°37'17"	4495.00'	48.78'	24.38'
13	01°26'17"	885.00'	22.21'	11.11'
14	00°48'54"	4380.00'	62.02'	31.01'

10-6-121