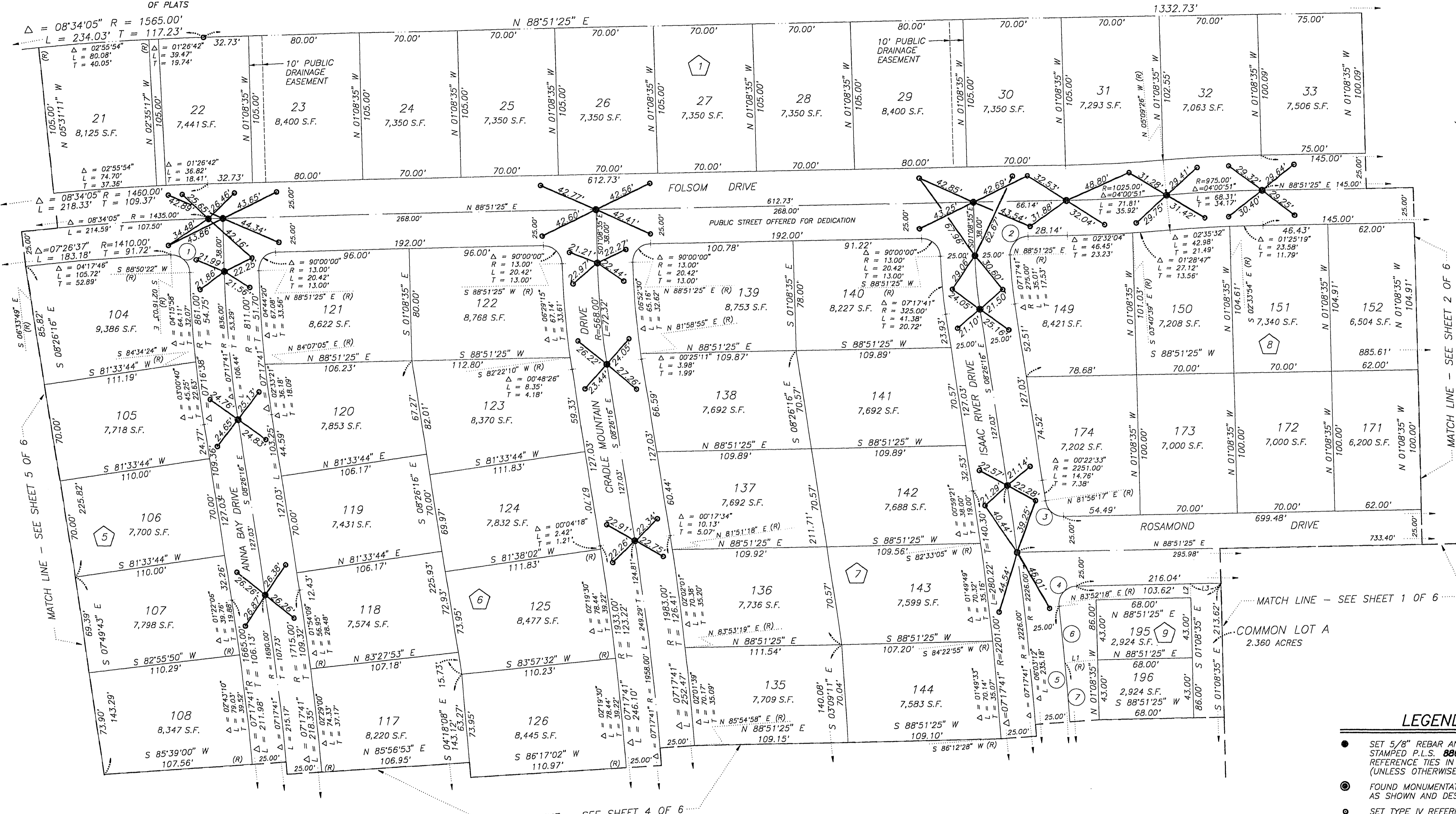


SUN CITY LAS VEGAS - UNIT NO. 32

REFERENCE MONUMENT TIE MAP

BEING A SUBDIVISION OF ALL OF PARCEL 2 AS SHOWN BY MAP THEREOF ON FILE IN FILE 70, PAGE 5 OF PARCEL MAPS IN THE CLARK COUNTY RECORDER'S OFFICE, CLARK COUNTY, NEVADA, LYING WITHIN SECTION 13, TOWNSHIP 20 SOUTH, RANGE 59 EAST AND SECTION 18, TOWNSHIP 20 SOUTH, RANGE 60 EAST, M.D.M., CITY OF LAS VEGAS, CLARK COUNTY, NEVADA

LOT 8
SUN CITY LAS VEGAS
UNIT NO. 31
BOOK 52, PAGE 1
OF PLATS



SCALE: 1"=40'

NORTH
GRID

MATCH LINE - SEE SHEET 5 OF 6

MATCH LINE - SEE SHEET 2 OF 6

MATCH LINE - SEE SHEET 1 OF 6

MATCH LINE - SEE SHEET 4 OF 6

LINE	BEARING	DISTANCE
L1	N 84°54'19" E	23.41'
L2	N 01°08'35" W	10.00'
L3	N 88°51'25" E	22.07'

CURVE	DELTA	RADIUS	LENGTH	TANGENT
1	91°06'25"	13.00'	20.67'	13.25'
2	90°00'00"	13.00'	20.42'	13.00'
3	83°04'52"	13.00'	18.85'	11.52'
4	84°59'07"	13.00'	21.55'	14.18'
5	04°59'07"	2251.00'	195.86'	97.99'
6	01°02'21"	2251.00'	40.61'	20.30'
7	02°32'40"	2251.00'	93.96'	49.59'
8	01°14'29"	2228.00'	48.23'	24.12'

NOTE:
MINIMUM BUILDING SETBACK
18' FRONT OF LOT AND 10' SIDE CORNER LOTS.

NOTE:
FOR SIDE PROPERTY LINES: SET CONCRETE
NAIL AND TIN IN THE REAR WALL ON THE
PROPERTY LINE PROJECTED. SET SAWCUT
IN THE BACK OF CURB AT THE FRONT OF
THE LOT ON THE PROPERTY LINE
PROJECTED.

SET 2"x2" HUB AND TACK AT LOT CORNERS
WHERE THERE IS NO BLOCK WALL.

SURVEYOR CERTIFICATE

I, CHRISTOPHER L. ALBERS, A PROFESSIONAL LAND SURVEYOR REGISTERED IN THE STATE OF NEVADA DO HEREBY CERTIFY THAT THE MONUMENTS SHOWN HAVE BEEN SET AND THAT THE REFERENCE MONUMENTS WERE ESTABLISHED AS SHOWN HEREON. THIS SURVEY WAS COMPLETED ON 10/6/92.

Christopher L. Albers
10/13/92
PLS 8866

CHRISTOPHER L. ALBERS

- ### LEGEND
- SET 5/8" REBAR AND ALUM. CAP STAMPED P.L.S. 8866 W/ REFERENCE TIES IN TOP OF CURB (UNLESS OTHERWISE NOTED)
 - ⊙ FOUND MONUMENTATION AS SHOWN AND DESCRIBED
 - SET TYPE IV REFERENCE MONUMENT, PLS 8866, IN TOP OF CURB
 - 171 LOT NUMBER
TOTAL RESIDENTIAL LOTS = 233
TOTAL COMMON LOTS = 1
 - ⬡ BLOCK NUMBER
 - ① CURVE NUMBER
 - L1 LINE SEGMENT NUMBER
 - SUBDIVISION BOUNDARY LINE
 - STREET CENTERLINE

10-6-116

058-4141-32