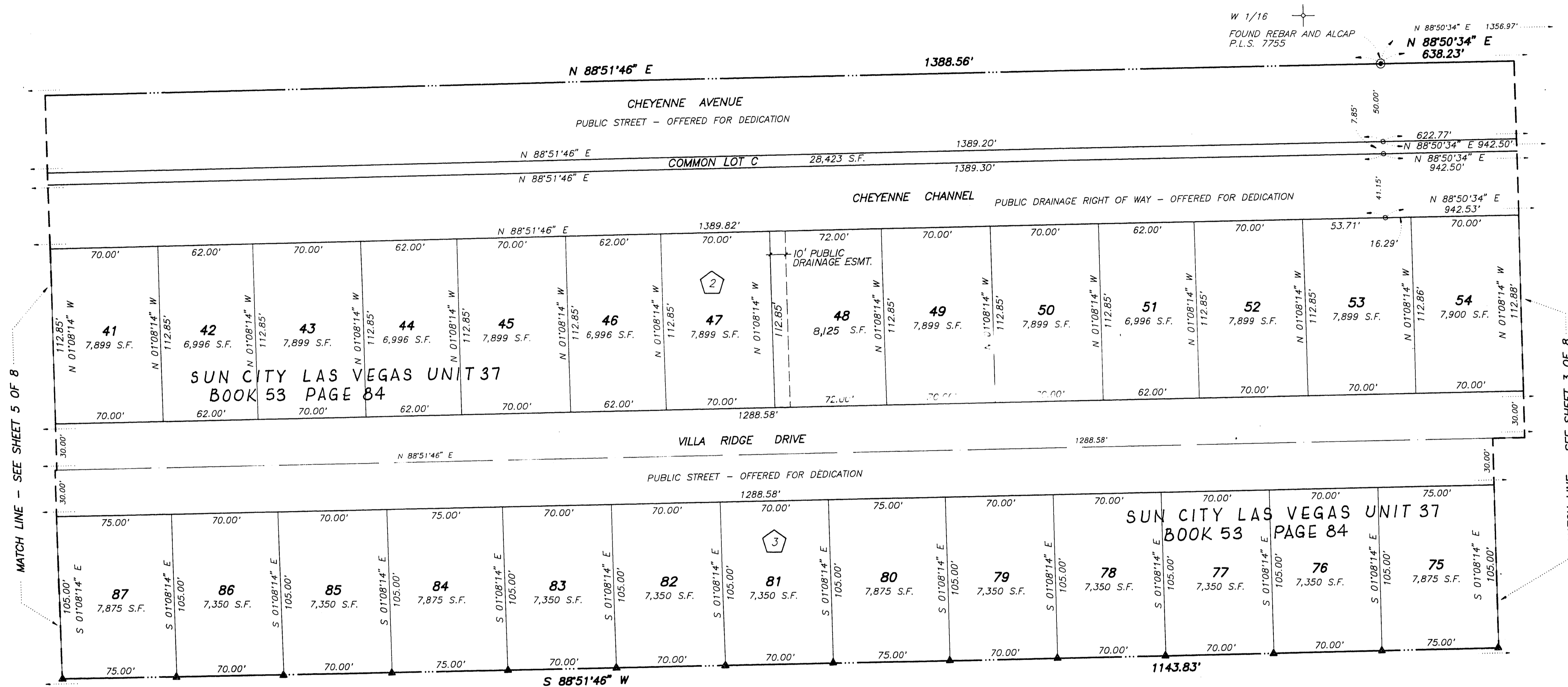


MONUMENTATION MAP OF SUN CITY LAS VEGAS - UNIT NO. 37 AT SUMMERLIN

A PLANNED DEVELOPMENT AND COMMON INTEREST COMMUNITY
BEING A SUBDIVISION OF PORTIONS OF SECTION 13, TOWNSHIP 20 SOUTH, RANGE 59 EAST AND
SECTION 18, TOWNSHIP 20 SOUTH, RANGE 60 EAST, M.D.M., CITY OF LAS VEGAS, CLARK COUNTY, NEVADA



NORTH
SCALE: 1" = 40'
GRID

SEE SHEET 2 FOR
KEY MAP AND
BASIS OF BEARING

MATCH LINE - SEE SHEET 5 OF 8

MATCH LINE - SEE SHEET 3 OF 8

SUN CITY LAS VEGAS UNIT 37
BOOK 53 PAGE 84

SUN CITY LAS VEGAS UNIT 37
BOOK 53 PAGE 84

LOT 8
SUN CITY LAS VEGAS
UNIT NO. 37
BOOK 53 PAGE 1
PLATS

NOTE:
FOR SIDE PROPERTY LINES: SET CONCRETE
NAIL AND TIN IN THE REAR WALL ON THE
PROPERTY LINE PROJECTED. SET SAWCUT
IN THE BACK OF CURB AT THE FRONT OF
THE LOT ON THE PROPERTY LINE
PROJECTED.

NOTE:
DIRECT VEHICULAR ACCESS TO CHEYENNE
AVENUE FROM ABUTTING LOTS IS PROHIBITED.

LEGEND

- ⊙ FOUND MONUMENTATION AS SHOWN AND DESCRIBED
- SET 5/8" REBAR AND PLASTIC CAP, P.L.S. 9047
- ▲ SET CONCRETE NAIL AND BRASS TAG, P.L.S. 9047
- ⬡ BLOCK NUMBER
- SUBDIVISION BOUNDARY LINE
- STREET CENTERLINE

10-6-96