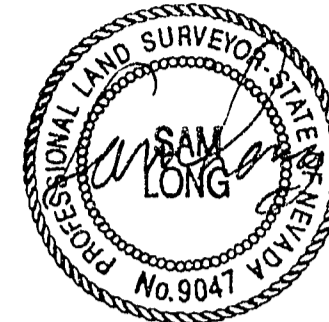


**SURVEYOR'S CERTIFICATE**  
 I, SAM LONG, A PROFESSIONAL LAND SURVEYOR REGISTERED IN THE STATE OF NEVADA, DO HEREBY CERTIFY THAT THE STREET AND REFERENCE MONUMENTS SHOWN ON THIS MAP HAVE BEEN MEASURED AND ESTABLISHED IN THE FIELD BY ME OR UNDER MY SUPERVISION AND COMPLETED ON JUNE 25, 1993.

SAM LONG  
 PROFESSIONAL LAND SURVEYOR, NO. 9047

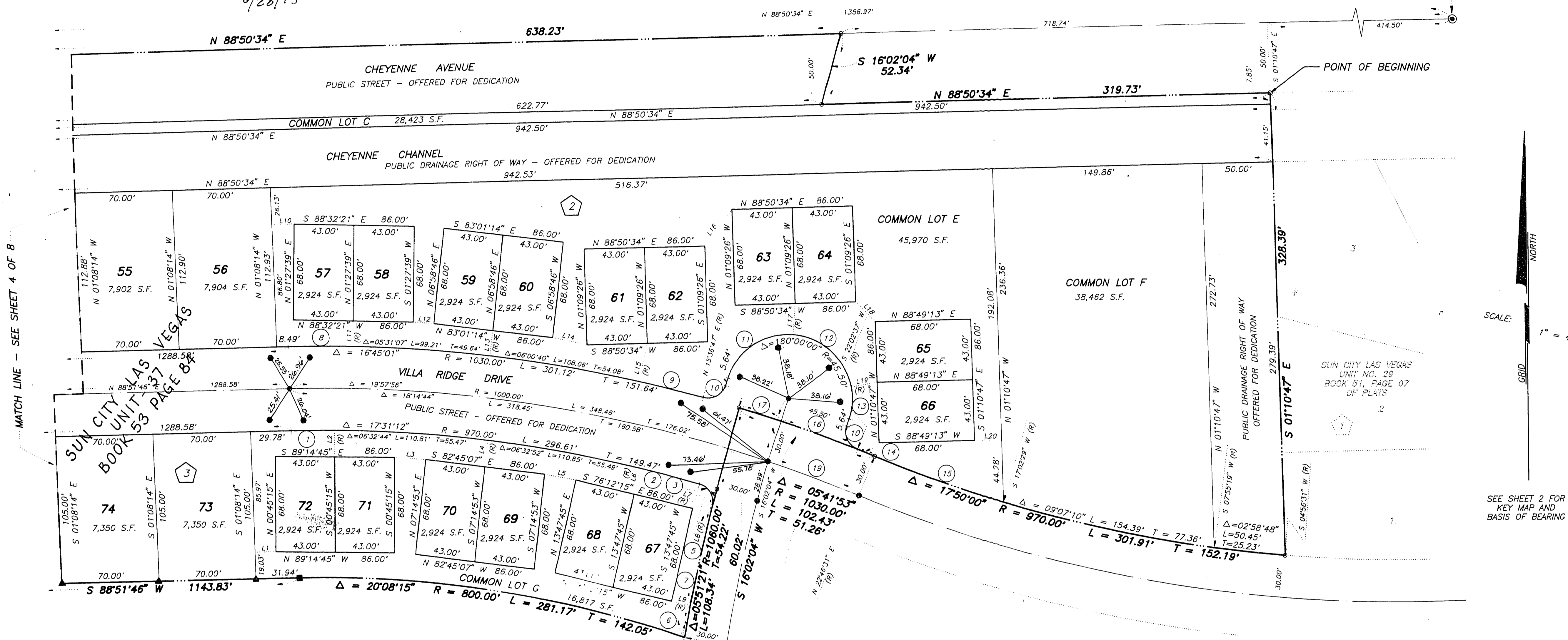


6/28/93

# MONUMENTATION MAP OF SUN CITY LAS VEGAS - UNIT NO. 37 AT SUMMERLIN

A PLANNED DEVELOPMENT AND COMMON INTEREST COMMUNITY  
 BEING A SUBDIVISION OF PORTIONS OF SECTION 13, TOWNSHIP 20 SOUTH, RANGE 59 EAST AND  
 SECTION 18, TOWNSHIP 20 SOUTH, RANGE 60 EAST, M.D.M., CITY OF LAS VEGAS, CLARK COUNTY, NEVADA

1/4 - 7  
 18  
 FOUND U.S.B.L.M.  
 BRASS CAP



MATCH LINE - SEE SHEET 4 OF 8

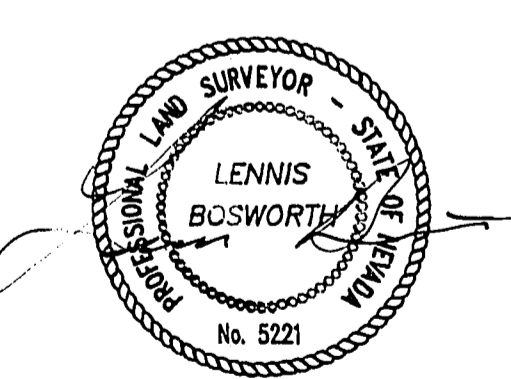
SUN CITY LAS VEGAS  
 UNIT NO. 37  
 BOOK 53, PAGE 8A

SEE SHEET 2 FOR  
 KEY MAP AND  
 BASIS OF BEARING

LOT 8  
 SUN CITY LAS VEGAS  
 UNIT NO. 31  
 BOOK 52, PAGE 1  
 OF PLATS

I, LENNIS BOSWORTH, A PROFESSIONAL LAND SURVEYOR REGISTERED IN THE STATE OF NEVADA, DO HEREBY CERTIFY THAT THE MONUMENTS HAVE BEEN CHECKED TO BE IN PLACE AND REPLACED AS NECESSARY, SHOWN BY CLOUDED AREAS. THIS SURVEY WAS COMPLETED ON

*Lennis Bosworth*  
 LENNIS BOSWORTH, P.L.S.  
 NEVADA CERTIFICATE NO. 5221



8-02-96

**NOTE:**  
 FOR SIDE PROPERTY LINES: SET CONCRETE NAIL AND TIN IN THE REAR WALL ON THE PROPERTY LINE PROJECTED. SET SAWCUT IN THE BACK OF CURB AT THE FRONT OF THE LOT ON THE PROPERTY LINE PROJECTED.

**NOTE:**  
 DIRECT VEHICULAR ACCESS TO CHEYENNE AVENUE FROM ABUTTING LOTS IS PROHIBITED.

**LEGEND**

- SET 5/8" REBAR AND ALUM. CAP STAMPED P.L.S. 9047
- SET 5/8" REBAR AND PLASTIC CAP STAMPED P.L.S. 9047
- FOUND MONUMENTATION AS SHOWN AND DESCRIBED
- SET BRASS CAP REFERENCE MONUMENT P.L.S. 9047
- ▲ SET CONCRETE NAIL AND BRASS TAG, P.L.S. 9047
- ⑬ CURVE NUMBER
- L20 LINE SEGMENT NUMBER
- SUBDIVISION BOUNDARY LINE
- STREET CENTERLINE

LINE	BEARING	DISTANCE
L1	N 88°51'46" E	15.08'
L2	N 00°42'09" E	18.93'
L3	S 88°01'29" E	22.73'
L4	N 07°14'53" E	18.97'
L5	S 79°28'11" E	22.77'
L6	N 13°47'45" E	18.97'
L7	S 74°39'04" E	18.97'
L8	N 16°22'58" E	18.97'
L9	N 78°32'53" W	13.70'
L10	N 88°51'46" E	16.12'
L11	N 01°27'39" E	18.00'
L12	S 05°48'47" E	18.00'
L13	N 06°58'46" E	18.00'
L14	S 77°58'57" E	25.29'
L15	N 12°59'26" E	27.69'
L16	N 37°18'00" E	32.64'
L17	N 04°45'17" E	22.08'
L18	S 44°28'43" E	19.72'
L19	N 80°03'26" E	18.76'
L20	N 88°49'13" E	19.00'

CURVE	DELTA	RADIUS	LENGTH	TANGENT
1	01°52'21"	970.00'	31.15'	15.57'
2	02°35'13"	970.00'	43.80'	21.90'
3	88°57'58"	13.00'	20.19'	12.77'
4	00°41'08"	1060.00'	12.88'	6.34'
5	03°53'40"	1060.00'	72.10'	36.08'
6	01°18'24"	1060.00'	23.56'	11.78'
7	05°10'13"	1060.00'	95.65'	47.86'
8	02°35'53"	1030.00'	46.70'	23.35'
9	02°17'21"	1030.00'	47.15'	23.58'
10	86°47'05"	13.00'	19.69'	12.29'
11	79°55'35"	45.50'	60.30'	30.50'
12	78°13'09"	45.50'	59.76'	30.07'
13	28°49'16"	45.50'	22.89'	11.69'
14	00°43'54"	1030.00'	13.15'	6.58'
15	05°44'00"	970.00'	97.07'	48.58'
16	03°12'55"	1030.00'	47.80'	23.91'
17	01°48'04"	1030.00'	31.48'	15.74'
18	01°43'12"	1000.00'	30.02'	15.01'
19	03°56'49"	1000.00'	68.89'	34.48'

10-6-95 JOB # 2-817-041  
 058-4141-37