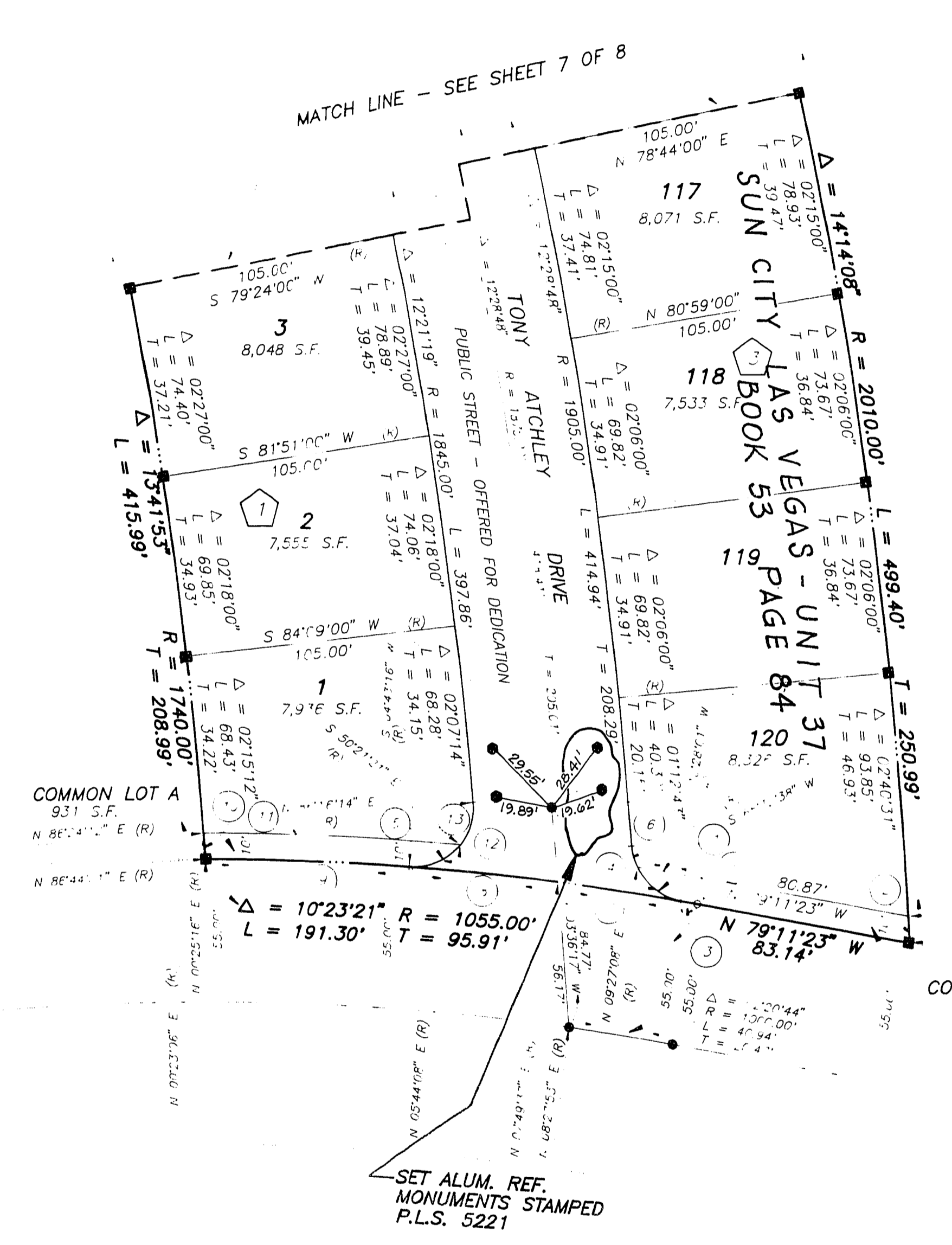


MONUMENTATION MAP OF SUN CITY LAS VEGAS - UNIT NO. 37 AT SUMMERLIN

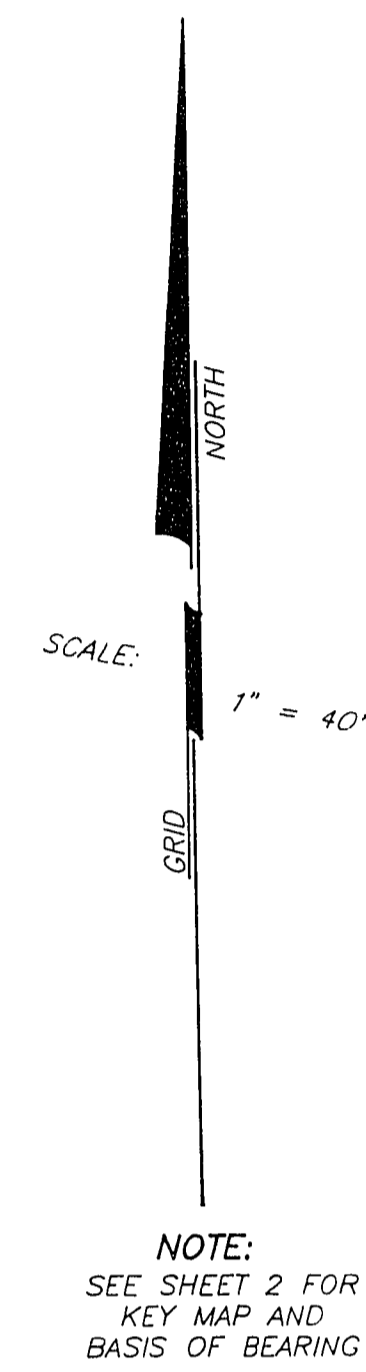
A PLANNED DEVELOPMENT AND COMMON INTEREST COMMUNITY
BEING A SUBDIVISION OF PORTIONS OF SECTION 13, TOWNSHIP 20 SOUTH, RANGE 59 EAST AND
SECTION 18, TOWNSHIP 20 SOUTH, RANGE 60 EAST, M.D.M., CITY OF LAS VEGAS, CLARK COUNTY, NEVADA



NOTE:
FOR SIDE PROPERTY LINES: SET CONCRETE NAIL AND TIN IN THE REAR WALL ON THE PROPERTY LINE PROJECTED. SET SAWCUT IN THE BACK OF CURB AT THE FRONT OF THE LOT ON THE PROPERTY LINE PROJECTED.

NOTE:
DIRECT VEHICULAR ACCESS TO SUN CITY BOULEVARD FROM ADJACENT LOTS IS PROHIBITED.

LOT #
N CITY LAS VEGAS
UNIT NO. 37
BOOK 53 - PAGE 84
P.L.S. 5221



NOTE:
SEE SHEET 2 FOR KEY MAP AND BASIS OF BEARING

- LEGEND**
- SET 5/8" REBAR AND ALUM. CAP STAMPED P.L.S. 9041
 - SET 5/8" REBAR AND PLASTIC CAP, P.L.S. 9047
 - SET BRASS CAP REFERENCE MONUMENT, P.L.S. 9047
- 3 BLOCK NUMBER
13 CURVE NUMBER
 - - - - - SUBDIVISION BOUNDARY LINE
 - - - - - STREET CENTERLINE

CURVE	DELTA	RADIUS	LENGTH	TANGENT
1	01°11'59"	1055.00'	25.24'	12.62'
2	03°17'32"	2010.00'	11.25'	5.13'
3	00°20'36"	1055.00'	6.32'	3.16'
4	75°55'42"	23.00'	30.48'	17.95'
5	55°04'37"	23.00'	22.11'	11.95'
6	20°51'05"	23.00'	8.37'	4.23'
7	02°38'24"	1055.00'	48.61'	24.31'
8	03°06'21"	1055.00'	52.19'	26.60'
9	04°18'00"	1055.00'	72.18'	36.61'
10	00°19'49"	1740.00'	10.03'	5.02'
11	05°11'02"	1065.00'	99.45'	49.76'
12	98°27'02"	23.00'	39.52'	26.67'
13	43°22'25"	23.00'	17.41'	9.15'