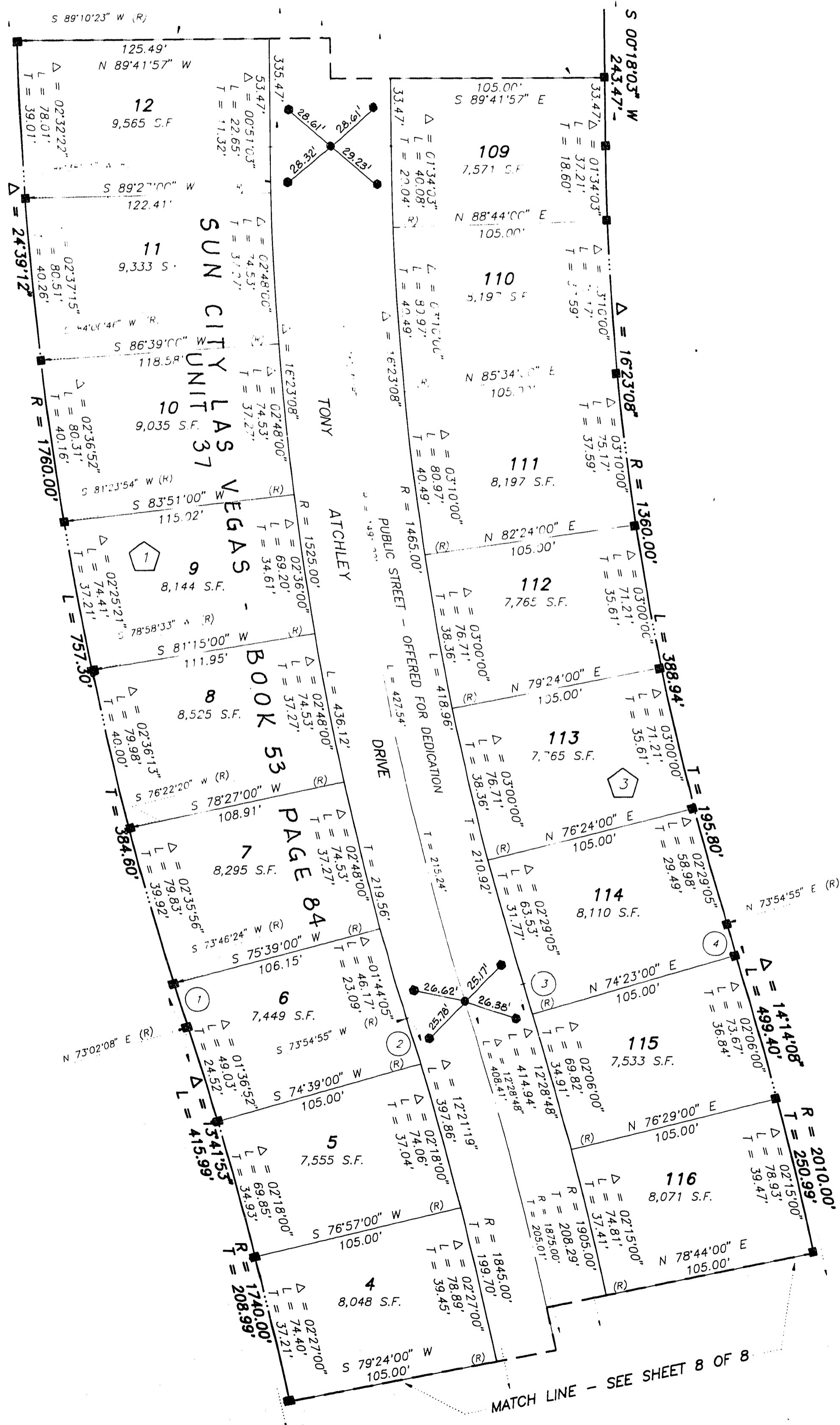


MONUMENTATION MAP
OF
SUN CITY LAS VEGAS - UNIT NO. 37
AT SUMMERLIN

A PLANNED DEVELOPMENT AND COMMON INTEREST COMMUNITY
BEING A SUBDIVISION OF PORTIONS OF SECTION 13, TOWNSHIP 20 SOUTH, RANGE 59 EAST AND
SECTION 18, TOWNSHIP 20 SOUTH, RANGE 60 EAST, M.D.M., CITY OF LAS VEGAS, CLARK COUNTY, NEVADA

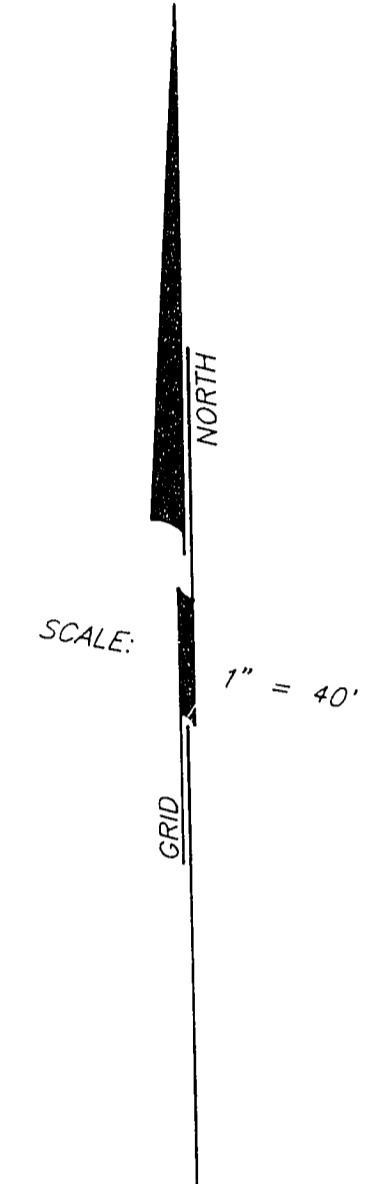
MATCH LINE - SEE SHEET 6 OF 8



LOT 7
SUN CITY LAS VEGAS
UNIT NO. 37
BOOK 53 PAGE 1
OF PLATS

TO
SUN CITY LAS VEGAS
UNIT NO. 37
BOOK 53 PAGE 1
OF PLATS

NOTE:
FOR SIDE PROPERTY LINES: SET CONCRETE
NAIL AND TIN IN THE REAR WALL ON THE
PROPERTY LINE PROJECTED. SET SAWCUT
IN THE BACK OF CURB AT THE FRONT OF
THE LOT ON THE PROPERTY LINE
PROJECTED.



SEE SHEET 2 FOR
KEY MAP AND
BASIS OF BEARING

LEGEND

- SET 5/8" REBAR AND ALUM. CAP STAMPED P.L.S. 9047
- SET 5/8" REBAR AND PLASTIC CAP P.L.S. 9047
- SET BRASS CAP REFERENCE MONUMENT, P.L.S. 9047
- ④ CURVE NUMBER
- SUBDIVISION BOUNDARY LINE
- STREET CENTERLINE

CURVE	DELTA	RADIUS	LENGTH	TANGENT
1	00°44'16"	1763.00'	22.66'	11.33'
2	00°44'05"	1845.00'	23.66'	11.83'
3	00°28'05"	1905.00'	15.56'	7.78'
4	00°28'05"	2010.00'	16.42'	8.21'

SHEET 5 OF 6

JOB # 2-817-041
058-4141-37

10-6-99