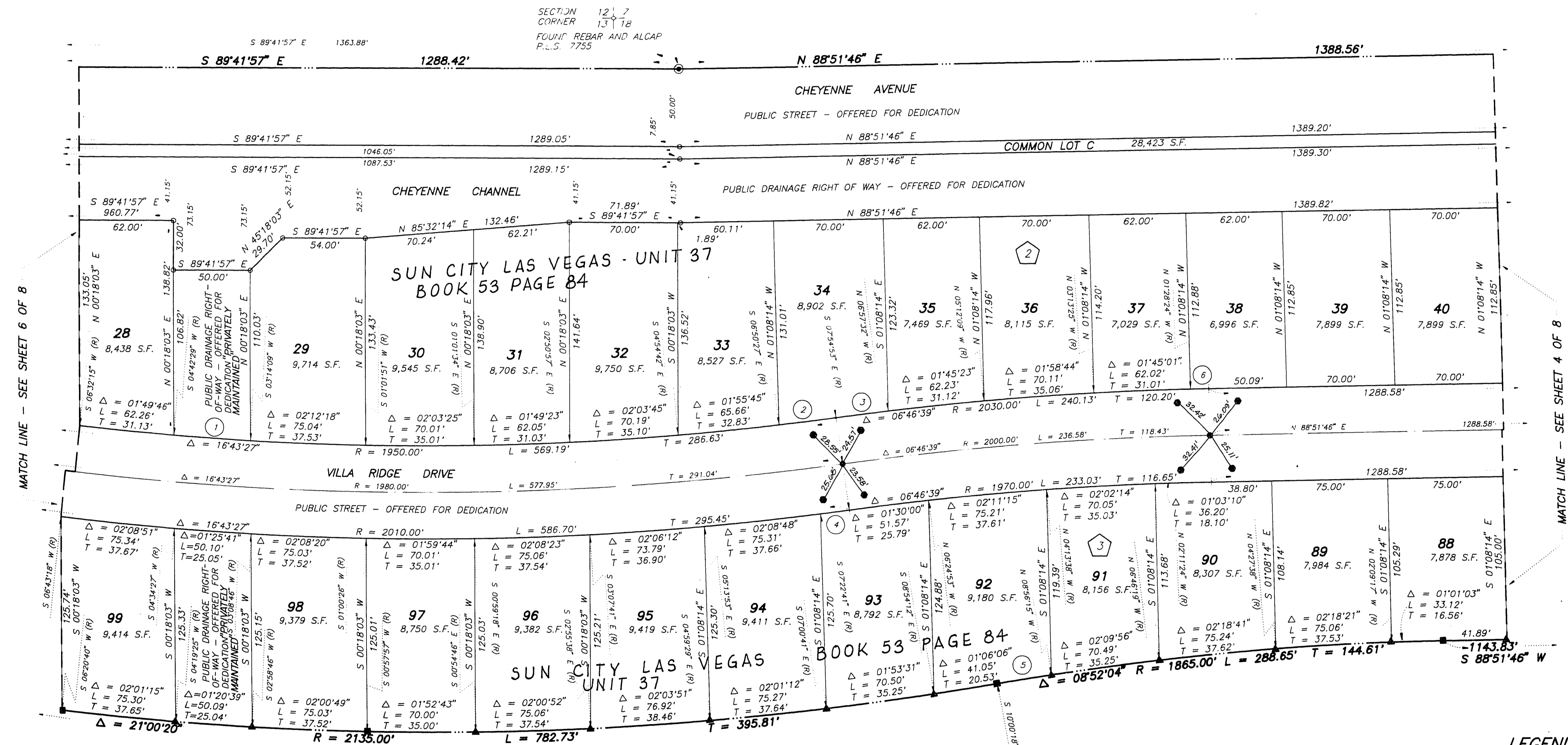
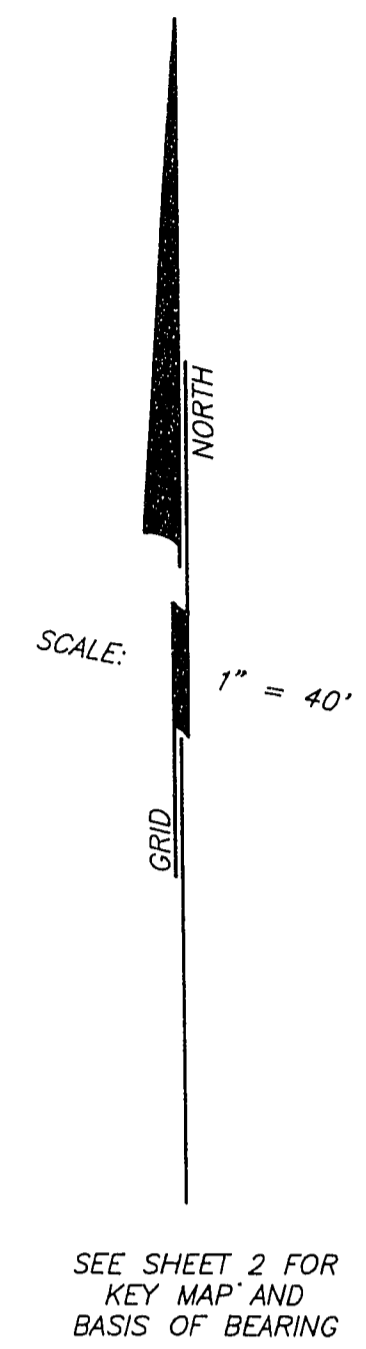


# MONUMENTATION MAP OF SUN CITY LAS VEGAS - UNIT NO. 37 AT SUMMERLIN

A PLANNED DEVELOPMENT AND COMMON INTEREST COMMUNITY  
BEING A SUBDIVISION OF PORTIONS OF SECTION 13, TOWNSHIP 20 SOUTH, RANGE 59 EAST AND  
SECTION 18, TOWNSHIP 20 SOUTH, RANGE 60 EAST, M.D.M., CITY OF LAS VEGAS, CLARK COUNTY, NEVADA



MATCH LINE - SEE SHEET 6 OF 8

MATCH LINE - SEE SHEET 4 OF 8

CURVE	DELTA	RADIUS	LENGTH	TANGENT
1	01°28'20"	1950.00'	50.11'	25.05'
2	01°04'26"	1950.00'	36.55'	18.27'
3	02°57'21"	2030.00'	33.87'	16.53'
4	02°32'12"	2010.00'	18.83'	8.41'
5	01°04'03"	1865.00'	34.75'	17.37'
6	02°20'10"	2030.00'	11.91'	5.95'

LOT 8  
SUN CITY LAS VEGAS  
UNIT NO. 37  
BOOK 53, PAGE 1  
OF PLATS

**NOTE:**  
FOR SIDE PROPERTY LINES: SET CONCRETE NAIL AND TIN IN THE REAR WALL ON THE PROPERTY LINE PROJECTED. SET SAWCUT IN THE BACK OF CURB AT THE FRONT OF THE LOT ON THE PROPERTY LINE PROJECTED.

**NOTE:**  
DIRECT VEHICULAR ACCESS TO CHEYENNE AVENUE FROM ABUTTING LOTS IS PROHIBITED.

- LEGEND**
- SET 5/8" REBAR AND ALUM. CAP STAMPED P.L.S. 9047
  - SET 5/8" REBAR AND PLASTIC CAP, P.L.S. 9047
  - FOUND MONUMENTATION AS SHOWN AND DESCRIBED
  - SET BRASS CAP REFERENCE MONUMENT, P.L.S. 9047
  - ▲ SET CONCRETE NAIL AND BRASS TAG, P.L.S. 9047
- ⑤ CURVE NUMBER
- SUBDIVISION BOUNDARY LINE
- STREET CENTERLINE