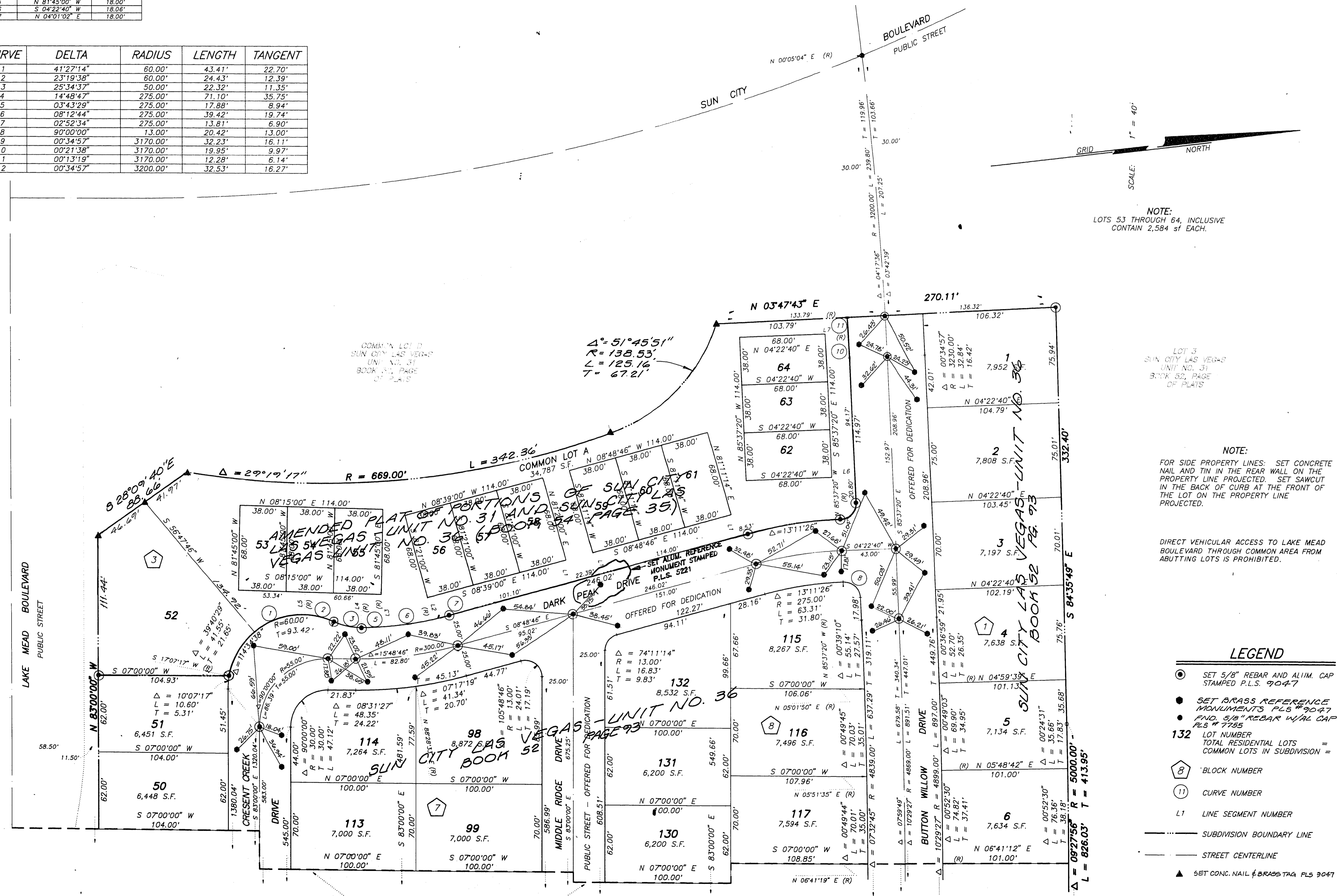


MONUMENTATION MAP OF SUN CITY LAS VEGAS - UNIT NO. 36 AT SUMMERLIN A PLANNED DEVELOPMENT

BEING A SUBDIVISION OF A PORTION OF SECTION 13, TOWNSHIP 20 SOUTH, RANGE 59 EAST AND
SECTION 18, TOWNSHIP 20 SOUTH, RANGE 60 EAST, M.D.M., CITY OF LAS VEGAS, CLARK COUNTY, NEVADA

LINE	BEARING	DISTANCE
L1	S 81°11'14" W	18.00'
L2	N 84°03'42" E	18.00'
L3	S 87°43'28" E	25.81'
L4	S 83°59'59" E	18.00'
L5	N 81°45'00" W	18.00'
L6	S 04°22'40" W	18.00'
L7	N 04°01'02" E	18.00'

CURVE	DELTA	RADIUS	LENGTH	TANGENT
1	41°27'14"	60.00'	43.41'	22.70'
2	23°19'38"	60.00'	24.43'	12.39'
3	25°34'37"	50.00'	22.32'	11.35'
4	14°48'47"	275.00'	71.10'	35.75'
5	03°43'29"	275.00'	17.88'	8.94'
6	08°12'44"	275.00'	39.42'	19.74'
7	02°52'34"	275.00'	13.81'	6.90'
8	90°00'00"	13.00'	20.42'	13.00'
9	00°34'57"	3170.00'	32.23'	16.11'
10	00°21'38"	3170.00'	19.95'	9.97'
11	00°13'19"	3170.00'	12.28'	6.14'
12	00°34'57"	3200.00'	32.53'	16.27'



NOTE:
LOTS 53 THROUGH 64, INCLUSIVE
CONTAIN 2,584 sf EACH.

NOTE:
FOR SIDE PROPERTY LINES: SET CONCRETE
NAIL AND TIN IN THE REAR WALL ON THE
PROPERTY LINE PROJECTED. SET SAWCUT
IN THE BACK OF CURB AT THE FRONT OF
THE LOT ON THE PROPERTY LINE
PROJECTED.

DIRECT VEHICULAR ACCESS TO LAKE MEAD
BOULEVARD THROUGH COMMON AREA FROM
ABUTTING LOTS IS PROHIBITED.

- LEGEND**
- SET 5/8" REBAR AND ALIM. CAP STAMPED P.L.S. 9047
 - SET BRASS REFERENCE MONUMENTS PLS # 9047
 - FND. 5/8" REBAR W/AL CAP PLS # 7755
 - 132 LOT NUMBER
TOTAL RESIDENTIAL LOTS = 132
COMMON LOTS IN SUBDIVISION = 1
 - 8 BLOCK NUMBER
 - 11 CURVE NUMBER
 - L1 LINE SEGMENT NUMBER
 - SUBDIVISION BOUNDARY LINE
 - STREET CENTERLINE
 - ▲ SET CONC. NAIL & BRASS TAG PLS 9047

MATCH LINE - SEE SHEET 3 OF 4