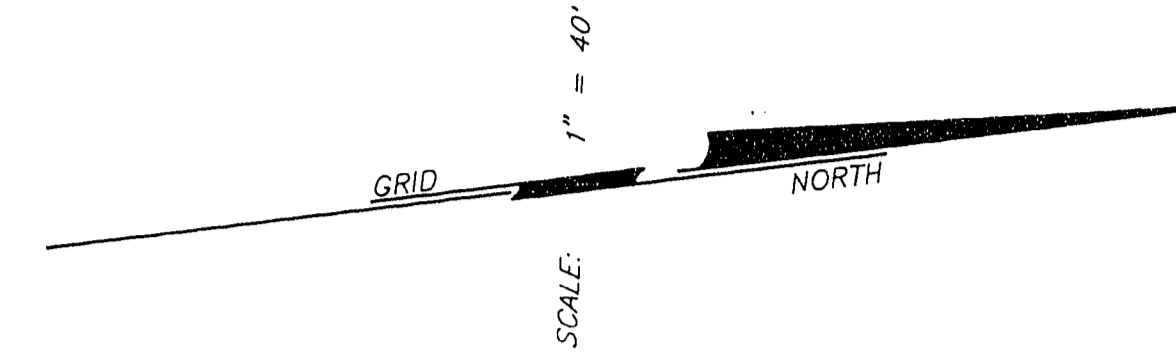


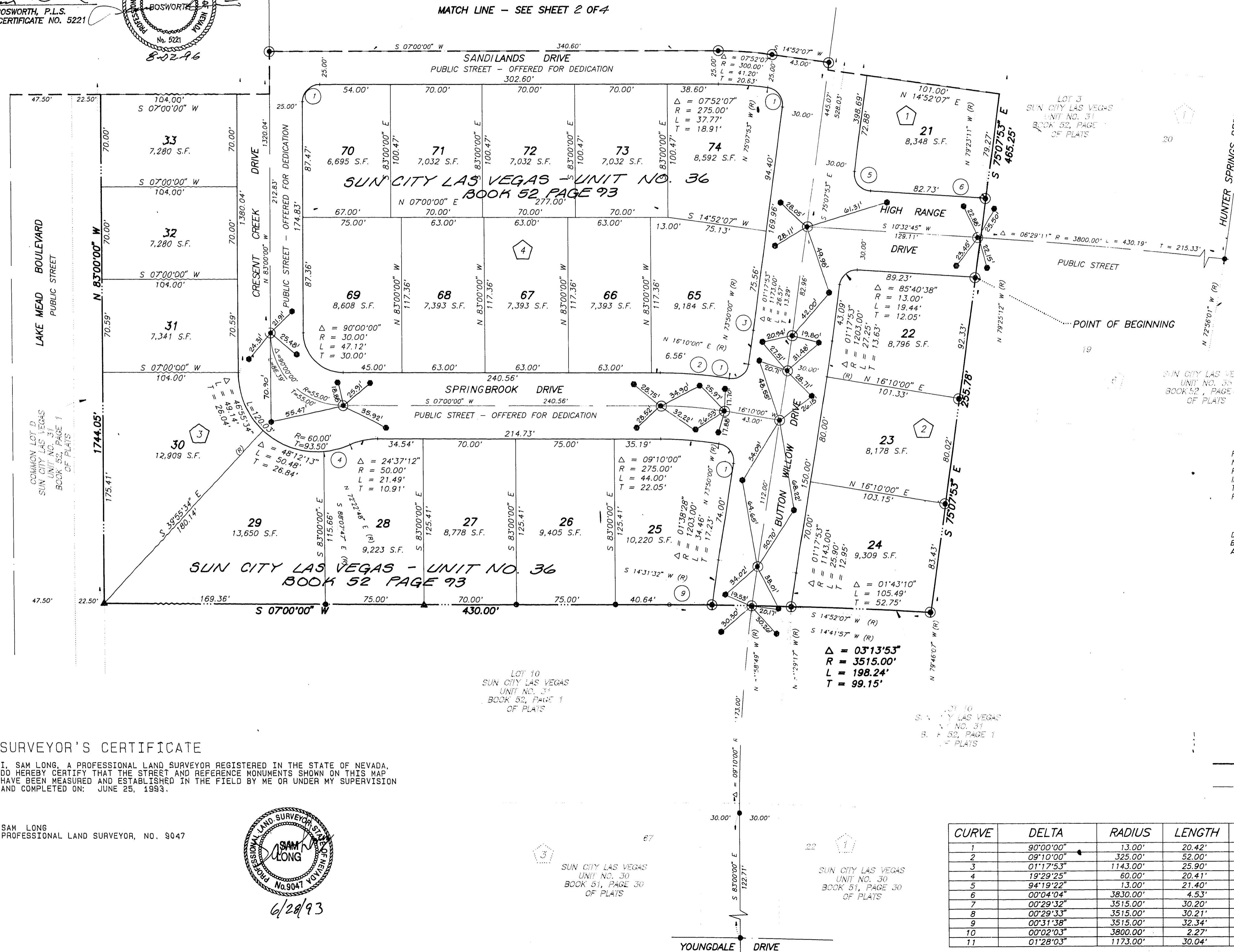
MONUMENTATION MAP OF SUN CITY LAS VEGAS - UNIT NO. 36 AT SUMMERLIN A PLANNED DEVELOPMENT

I, LENNIS BOSWORTH, A PROFESSIONAL LAND SURVEYOR REGISTERED IN THE STATE OF NEVADA, DO HEREBY CERTIFY THAT THE MONUMENTS HAVE BEEN CHECKED TO BE IN PLACE AND REPLACED AS NECESSARY, SHOWN BY CLOUDED AREAS. THIS SURVEY WAS COMPLETED ON 8-22-96

BEING A SUBDIVISION OF A PORTION OF SECTION 13, TOWNSHIP 20 SOUTH, RANGE 59 EAST AND SECTION 18, TOWNSHIP 20 SOUTH, RANGE 60 EAST, M.D.M., CITY OF LAS VEGAS, CLARK COUNTY, NEVADA



LENNIS BOSWORTH, P.L.S.
NEVADA CERTIFICATE NO. 5221



NOTE:
FOR SIDE PROPERTY LINES: SET CONCRETE NAIL AND TIN IN THE REAR WALL ON THE PROPERTY LINE PROJECTED. SET SAWCUT IN THE BACK OF CURB AT THE FRONT OF THE LOT ON THE PROPERTY LINE PROJECTED.

DIRECT VEHICULAR ACCESS TO LAKE MEAD BOULEVARD THROUGH COMMON AREA FROM ADJACENT LOTS IS PROHIBITED.

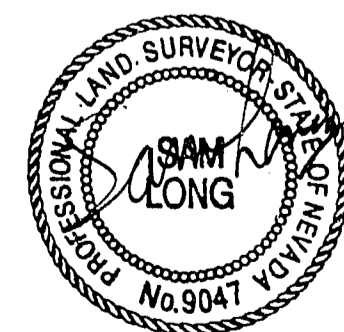
LEGEND

- 5/8" REBAR AND ALUM. CAP STAMPED P.L.S. 7755
- ⊙ SET 3/8" REBAR W/AL CAP P.L.S. 9047
- ⊙ SET BRASS REFERENCE MONUMENT P.L.S. 9047
- 74 LOT NUMBER
TOTAL RESIDENTIAL LOTS = 132
COMMON LOTS IN SUBDIVISION = 1
- 4 BLOCK NUMBER
- 10 CURVE NUMBER
- SUBDIVISION BOUNDARY LINE
- STREET CENTERLINE
- ▲ SET CONG. NAIL & BRASS TAG P.L.S. 9047

SURVEYOR'S CERTIFICATE

I, SAM LONG, A PROFESSIONAL LAND SURVEYOR REGISTERED IN THE STATE OF NEVADA, DO HEREBY CERTIFY THAT THE STREET AND REFERENCE MONUMENTS SHOWN ON THIS MAP HAVE BEEN MEASURED AND ESTABLISHED IN THE FIELD BY ME OR UNDER MY SUPERVISION AND COMPLETED ON: JUNE 25, 1993.

SAM LONG
PROFESSIONAL LAND SURVEYOR, NO. 9047



CURVE	DELTA	RADIUS	LENGTH	TANGENT
1	90°00'00"	13.00'	20.42'	13.00'
2	09°10'00"	325.00'	52.00'	26.05'
3	01°17'53"	1143.00'	25.90'	12.95'
4	19°29'25"	60.00'	20.41'	10.30'
5	94°19'22"	13.00'	21.40'	14.02'
6	00°04'04"	3830.00'	4.53'	2.27'
7	00°29'32"	3515.00'	30.20'	15.10'
8	00°29'33"	3515.00'	30.21'	15.11'
9	00°31'38"	3515.00'	32.34'	16.17'
10	00°02'03"	3800.00'	2.27'	1.13'
11	01°28'03"	1173.00'	30.04'	15.02'

SHEET 1 OF 4

058-4141-36

10-6-101 JOB#2-817-031