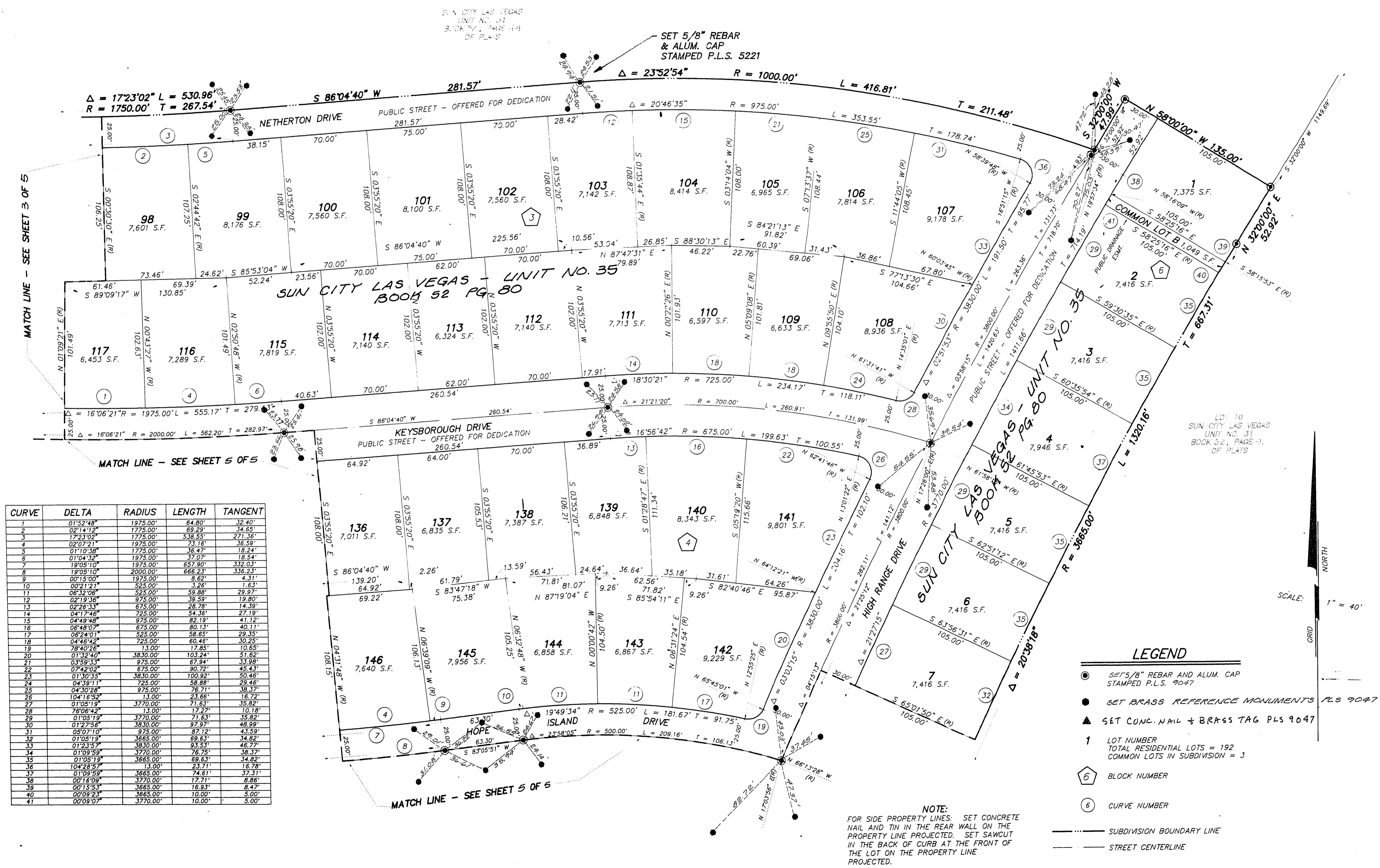


MONUMENTATION OF MAP SUN CITY LAS VEGAS - UNIT NO. 35 AT SUMMERLIN A PLANNED DEVELOPMENT

BEING A SUBDIVISION OF A PORTION OF PARCEL 3 AS SHOWN BY MAP THEREOF ON FILE IN FILE 71, PAGE 17 OF PARCEL MAPS IN THE CLARK COUNTY RECORDER'S OFFICE, CLARK COUNTY, NEVADA, LYING WITHIN SECTION 13, TOWNSHIP 20 SOUTH, RANGE 59 EAST AND SECTION 18, TOWNSHIP 20 SOUTH, RANGE 60 EAST, M.D.M., CITY OF LAS VEGAS, CLARK COUNTY, NEVADA



CURVE	DELTA	RADIUS	LENGTH	TANGENT
1	01°52'48"	1975.00'	64.80'	32.40'
2	02°14'12"	1775.00'	69.29'	34.65'
3	17°23'02"	1775.00'	538.55'	271.36'
4	02°07'21"	1975.00'	73.16'	36.59'
5	01°10'38"	1775.00'	36.47'	18.24'
6	01°04'32"	1975.00'	37.07'	18.54'
7	19°05'10"	1975.00'	657.90'	332.03'
8	19°05'10"	2000.00'	666.23'	336.23'
9	00°15'00"	1975.00'	8.62'	4.31'
10	00°21'21"	525.00'	3.26'	1.63'
11	06°32'06"	525.00'	59.69'	29.87'
12	02°19'36"	675.00'	39.59'	19.80'
13	02°26'33"	675.00'	28.78'	14.39'
14	04°17'46"	725.00'	54.36'	27.19'
15	04°49'48"	975.00'	82.19'	41.12'
16	06°48'07"	675.00'	80.13'	40.11'
17	06°24'01"	525.00'	58.65'	29.33'
18	04°46'42"	725.00'	60.46'	30.23'
19	78°40'26"	13.00'	17.85'	10.65'
20	01°32'40"	3830.00'	103.24'	51.62'
21	03°59'33"	725.00'	67.94'	33.98'
22	07°42'02"	675.00'	90.72'	45.43'
23	01°30'35"	3830.00'	100.92'	50.46'
24	04°38'17"	725.00'	67.94'	33.98'
25	04°39'24"	975.00'	76.71'	38.37'
26	104°16'52"	13.00'	23.66'	16.72'
27	01°05'19"	3770.00'	71.63'	35.82'
28	78°08'42"	13.00'	17.27'	10.18'
29	01°05'19"	3770.00'	71.63'	35.82'
30	07°27'56"	3830.00'	97.97'	48.99'
31	05°07'10"	975.00'	67.94'	33.98'
32	01°05'19"	3665.00'	69.63'	34.82'
33	01°23'57"	3830.00'	93.53'	46.77'
34	01°09'59"	3770.00'	76.75'	38.37'
35	01°05'19"	3665.00'	69.63'	34.82'
36	104°28'57"	13.00'	23.71'	16.78'
37	01°09'59"	3665.00'	74.61'	37.31'
38	02°10'00"	3770.00'	17.71'	8.86'
39	00°15'53"	3665.00'	16.93'	8.47'
40	00°09'23"	3665.00'	10.00'	5.00'
41	00°09'07"	3770.00'	10.00'	5.00'

- LEGEND**
- SET 5/8" REBAR AND ALUM. CAP STAMPED P.L.S. 9047
 - SET BRASS REFERENCE MONUMENTS PLS 9047
 - ▲ SET CONC. NAIL + BRASS TAG PLS 9047
 - 1 LOT NUMBER
TOTAL RESIDENTIAL LOTS = 192
COMMON LOTS IN SUBDIVISION = 3
 - 6 BLOCK NUMBER
 - 6 CURVE NUMBER
 - SUBDIVISION BOUNDARY LINE
 - STREET CENTERLINE

NOTE:
FOR SIDE PROPERTY LINES: SET CONCRETE NAIL AND TIN IN THE REAR WALL ON THE PROPERTY LINE PROJECTED. SET SAWCUT IN THE BACK OF CURB AT THE FRONT OF THE LOT ON THE PROPERTY LINE PROJECTED.

SET 2"x2" HUB AND TACK AT LOT CORNERS WHERE THERE IS NO BLOCK WALL.

PLOTTED 02/27/82 3:57 PM DRAWING: 02-35-3

10-6-108